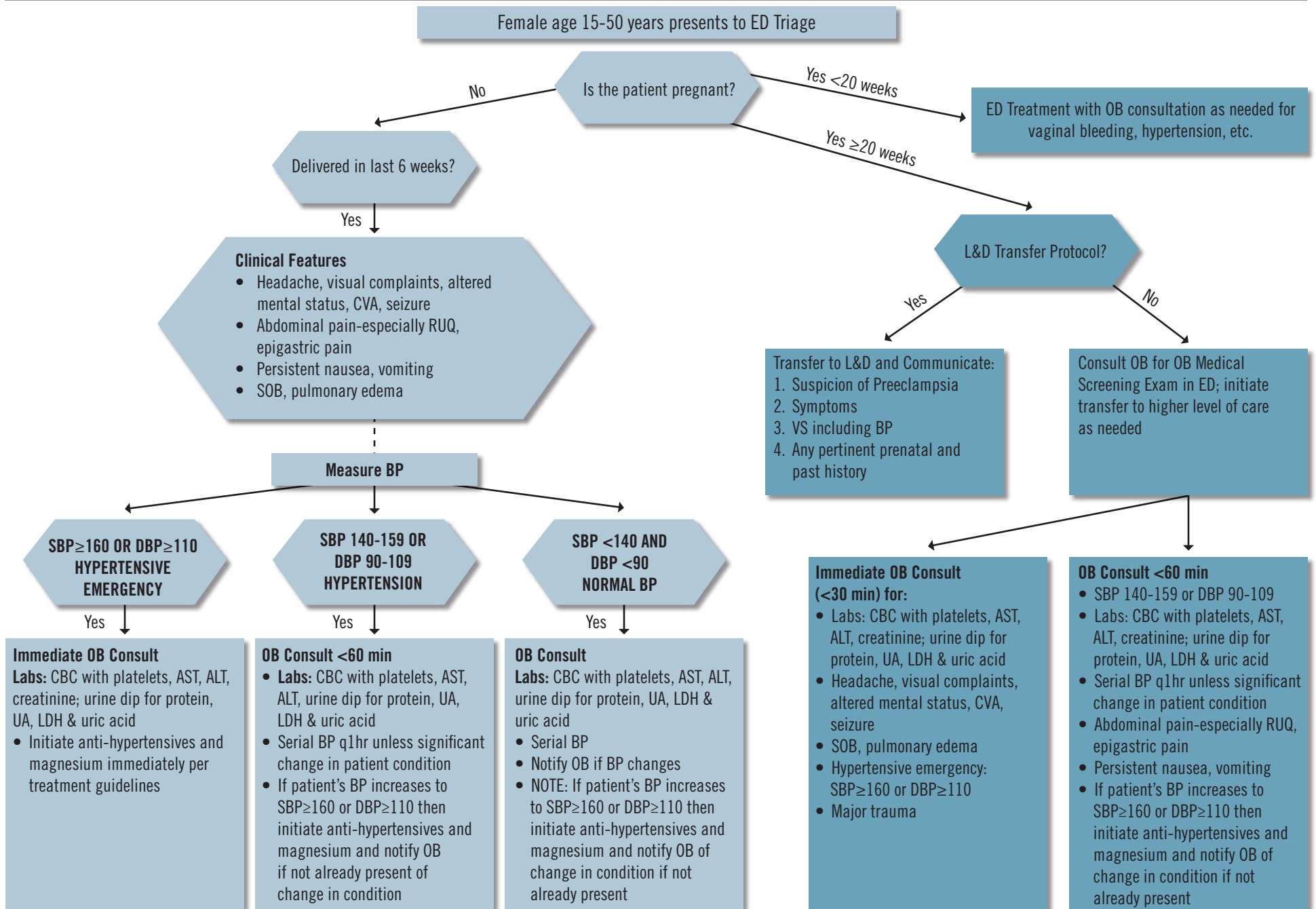


New York State Department of Health • **Antepartum and Postpartum Preeclampsia and Eclampsia Management in the Emergency Department (ED)**
Evaluation and Diagnosis



New York State Department of Health • **Antepartum and Postpartum Preeclampsia and Eclampsia Management in the Emergency Department (ED)**
Treatment

1st Line Anti-Hypertensive Treatment: Labetalol & Hydralazine*
 Target BP: 140-160/90-100 (BP<140/90 = decreased fetal perfusion)

Magnesium

LABETALOL as Primary Anti-Hypertensive

1. Administer labetalol 20 mg IV over 2 min
2. Repeat BP in 10 min
 - If BP threshold is still exceeded, administer labetalol 40 mg IV
 - If SBP<160 and DBP<100, continue to monitor closely
3. Repeat BP in 10 min
 - If BP threshold is still exceeded, administer labetalol 80 mg IV
 - If SBP<160 and DBP<100, continue to monitor closely
4. Repeat BP in 10 min
 - If BP threshold is still exceeded, administer hydralazine 10 mg IV over 2 min
 - If SBP<160 and DBP<100, continue to monitor closely
5. Repeat BP in 20 min; if BP threshold is still exceeded, obtain emergent consultation from maternal-fetal medicine, internal medicine, anesthesiology, or critical care
6. Once target BP achieved, monitor BP q10 min for 1 hour, q15 min for 2nd hour, q30 min for 3rd hour

HYDRALAZINE as Primary Anti-Hypertensive

1. Administer hydralazine 5 or 10 mg IV
2. Repeat BP in 20 min
 - If BP threshold is still exceeded, administer hydralazine 10 mg IV
 - If SBP<160 and DBP<100, continue to monitor closely
3. Repeat BP in 20 min
 - If BP threshold is still exceeded, administer labetalol 20 mg IV
 - If SBP<160 and DBP<100, continue to monitor closely
4. Repeat BP in 10 min
 - If BP threshold is still exceeded, administer labetalol 40 mg IV and obtain emergent consultation from maternal-fetal medicine, internal medicine, anesthesiology, or critical care
 - If SBP<160 and DBP<100, continue to monitor closely
5. Once target BP achieved, monitor BP q10 min for 1 hour, q15 min for 2nd hour, q30 min for 3rd hour

Initial Treatment

1. Loading Dose: 4-6 gm over 15-20 min
2. Maintenance 1-2 gm/hour
3. Close observation for signs of toxicity
 - Disappearance of deep tendon reflexes
 - Decreased RR, shallow respirations, shortness of breath
 - Heart block, chest pain
 - Pulmonary edema

If Patient Seizes While on Magnesium:

1. Secure airway and maintain oxygenation
2. Give 2nd loading dose of 2 gm magnesium over 5 min
3. If patient seizes after 2nd magnesium bolus, consider one of the following:
 - Midazolam 1-2 mg IV; may repeat in 5-10 min
 - Lorazepam 2 mg IV; may repeat
 - Diazepam 5-10 mg IV; may repeat q15 min to max of 30 mg
 - Phenytoin 1g IV over 20 min

Seizures Resolve

1. Maintain airway and oxygenation
2. Monitor VS, cardiac rhythm/ECG for signs of medication toxicity
3. Consider brain imaging for:
 - Head trauma
 - Focal seizure
 - Focal neurologic findings
 - Other neurologic diagnosis is suspected

*Labetalol and Hydralazine recommendations based on 2011 ACOG Committee Opinion #514 and Practice Bulletin #33, reaffirmed 2012, and New York State Department of Health Hypertensive Disorders in Pregnancy Guidelines (2013).

Citation: Maurice L. Druzin, MD, Laurence E. Shields, MD, Nancy L. Peterson, RNC, PNNP, MSN, Kathryn Melsop, MS, Valerie Cape, BS, BA. Preeclampsia Toolkit: Improving Health Care Response to Preeclampsia (California Maternal Quality Care Collaborative Toolkit to Transform Maternity Care) Developed under contract #11-10006 with the California Department of Public Health; Maternal Child, and Adolescent Health Division; Published by the California Maternal Quality Care Collaborative, August 2013.

The funding for the development of the toolkit was provided by Federal Title V block grant funding from the California Department of Public Health; Maternal, Child and Adolescent Health Division and Stanford University. © 2013 California Department of Public Health.