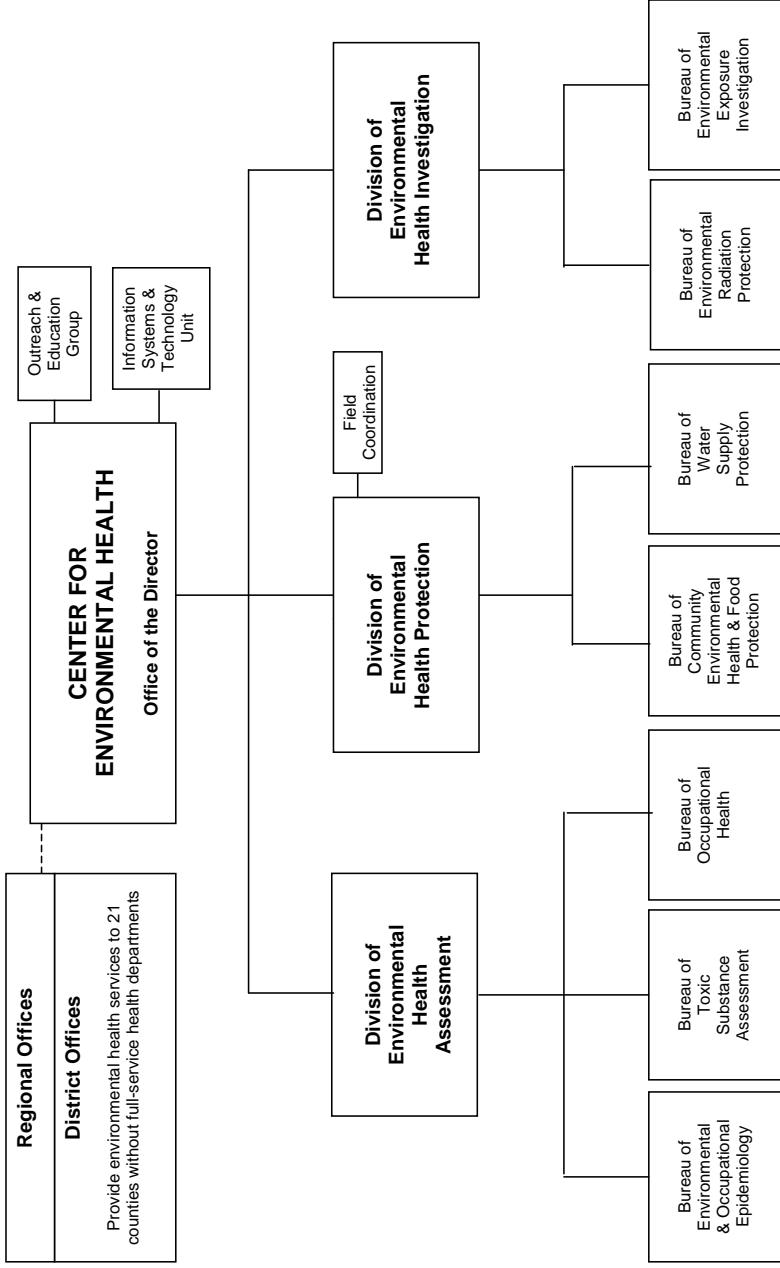


# Center for Environmental Health



## Directory

New York State Department of Health



# Center for Environmental Health

New York State Department of Health

Flanigan Square, 547 River Street

Troy, NY 12180-2216

Welcome to the New York State Department of Health's  
Center for Environmental Health.

The Center applies scientific, medical, engineering, and public health expertise to identify, understand, prevent, and mitigate risks to human health from New York State's living and working environments. It utilizes biologists, chemists, toxicologists, epidemiologists, statisticians, physicians, engineers, health physicists, industrial hygienists, and other public health professionals. This directory describes the environmental health responsibilities and activities for each division, bureau, and program group within the Center.

NYSDOH regional offices and local health departments (NYSDOH district offices, county health departments, and the New York City Department of Health & Mental Hygiene) are listed on pages 10 and 11.

## Telephone Directory

### Environmental Health Information Line

**800 458-1158**

### Office of the Director

**518 402-7500**

Information Systems & Technology Unit

518 402-7474

Outreach & Education Group

518 402-7530

### Division of Environmental Health Assessment

**518 402-7511**

Bureau of Environmental & Occupational Epidemiology

518 402-7950

Bureau of Toxic Substance Assessment

518 402-7800

Bureau of Occupational Health

518 402-7900

### Division of Environmental Health Protection

**518 402-7510**

Bureau of Community Environmental Health & Food Protection

518 402-7600

Bureau of Water Supply Protection

518 402-7650

Field Coordination Unit

518 402-7739

### Division of Environmental Health Investigation

**518 402-7501**

Bureau of Environmental Radiation Protection

518 402-7550

Bureau of Environmental Exposure Investigation

518 402-7850

A NYSDOH duty officer is available during non-working hours (holidays, nights, and weekends). The duty officer receives and refers, as necessary, official communications from the Governor's Office, NYS Police, NYS Office of Emergency Management, or other agencies. In addition, the duty officer handles calls from the general public reporting urgent public health concerns.

**After-Hours Duty Officer**

**866-881-2809**

**Center Staff E-mail Address**

**ceheduc@health.state.ny.us**

**Center for Environmental Health Web Site Information**

**[www.health.ny.gov/environmental/](http://www.health.ny.gov/environmental/)**

# **CENTER FOR ENVIRONMENTAL HEALTH**

**Room 500**

**518 402-7500**

**Center Director**

**Assistant Center Director**

**Senior Executive**

**Center Administrator**

**Fax 518 402-7509**

**Howard A. Freed, M.D.**

**Robert Chinery, M.S.,P.E.**

**Nancy Kim, Ph.D.**

**Gail Amento**

The Office of the Center Director provides overall executive direction for environmental health programs. In addition to supervision of central office staff, the office works closely with regional office staff to coordinate the oversight of environmental health program activities implemented by the Department's nine district offices, 36 county health departments, and the New York City Department of Health and Mental Hygiene.

## **Information Systems & Technology Unit**

**Room 325**

**518 402-7474**

**Network Administration**

**& Resource Development**

**Data Systems, Administration & Support**

**Application Development**

**Fax 518 402-7499**

**John Bintz**

**Victor Friedman**

**Kim Mann**

Unit staff provide comprehensive computer services to the Center and local health units including district offices, regional offices, and county health departments. Staff provide support in the following areas:

- network, intranet, and internet solutions to enhance electronic communication;
- systems analysis, database design, and application development; and
- design and maintenance of centralized environmental health data systems.

## **Outreach & Education Group**

**Room 316**

**518 402-7530**

**Director**

**Fax 518 402-7539**

**Faith Schottenfeld, Ed.D.**

The Group maintains communication with Center staff and the public to raise awareness, increase understanding, and respond to concerns about environmental health issues. The Group is responsible for:

- coordinating the Center's response to the public regarding environmental health issues;
- coordinating community involvement and public participation for a wide range of programs across Center bureaus and divisions;

- identifying educational and outreach needs for diverse audiences;
- developing key messages and designing and preparing information packages;
- creating fact sheets, brochures, flyers, posters, videos, presentations, and exhibits; and
- managing the Environmental Health Infoline.

The Center maintains a toll-free environmental health information line to encourage and simplify communication with the public. The number is 1-800-458-1158. The infoline is staffed Monday through Friday from 8:30 a.m. until 4:30 p.m. After-hours callers can leave a message. Calls are routed by computer from an electronic menu, or operators will route the calls.

## **Division of Environmental Health Assessment** **Room 500**

**518 402-7511**  
**Acting Director**  
**Associate Director**

**Fax 518 402-7509**  
**Kevin Gleason**  
**John Wilson**

The Division evaluates the health effects of people's exposure to chemical, physical, and microbiological agents in food, soil, water, air and consumer products. It carries out exposure and health effects studies of people who have been exposed to environmental chemicals, and it identifies and studies practices that put workers or the public at risk for injuries or adverse health effects. The Division maintains environmental disease registries and uses registry data to conduct research and design public health interventions. The Division uses mapping and other tools to display data, for health professionals and the public, on chemicals in the environment and on diseases. These tools increase understanding of changes over time and across New York State. Through these activities, the Division informs people about possible health risks and how to reduce or eliminate them.

## **Bureau of Environmental & Occupational Epidemiology** **Room 200**

**518 402-7950**  
**Director**  
**Assistant Director**

**Fax 518 402-7959**  
**Syni-An Hwang, Ph.D.**  
**Philip Cross**

Bureau staff study, monitor, and evaluate the effects of exposure to toxic substances and other environmental factors at home, at work, and in the community. The Bureau is responsible for:

- surveillance of chronic diseases and epidemiological studies to help identify environmental risk factors;
- geographic information system maps of disease and risk factors;
- surveillance and research of congenital malformations;
- registries of people exposed to environmental risk factors to monitor their health status over time;
- exposure investigations to identify and reduce environmental health risks; and

- public education regarding environmental and occupational exposures and health risks.

**The Bureau has four sections:**

Community Exposure Research  
 Congenital Malformations Registry &  
 Research  
 Environmental Health Surveillance  
 Epidemiologic Studies & Evaluation

Elizabeth Lewis-Michl, Ph.D.  
 Charlotte Druschel, M.D.,  
 Medical Director  
 Thomas Talbot  
 Shao Lin, Ph.D.

**Bureau of Toxic Substance Assessment**

**Room 330**

**518 402-7800**

**Director**

**Acting Assistant Director**

**Fax 518 402-7819**

**Daniel Luttinger, Ph.D.**

**Jan Storm, Ph.D.**

Bureau staff assess the potential for exposures and risks when people come in contact with toxic substances through air, water, soil, and food.

Bureau staff:

- assess exposures and risks associated with contaminated sites;
- evaluate pesticides registered in the state to determine their potential to pose significant risks to public health;
- develop annual sportfish and game consumption advisories;
- perform indoor air quality assessments for schools and other public buildings;
- assist in the development of drinking water and ambient water standards and guidelines;
- assess potential public health impacts of electric generating facilities, incinerators, and other sources;
- manage the National Toxic Substance Incidence Program; and
- provide information for responding to instances of chemical and biological releases/exposures.

**The Bureau has four sections:**

Toxicological Assessment  
 Indoor Health Assessment  
 Exposure Assessment  
 Hazardous Substance Events  
 Surveillance

James Leach  
 Gerald McDonald  
 Judith Abbott  
 Wanda Welles, Ph.D.

## **Bureau of Occupational Health**

**Room 230**

**518 402-7900**  
**Director**  
**Medical Director**

**Fax 518 402-7909**  
**Eileen Franko, Dr. P.H., M.P.H.**  
**Matthew Mauer, D.O., M.P.H.**

Bureau staff monitor and address work-related illness and injury, provide work-site consultation service, and oversee a statewide network of clinics specializing in diagnosis and prevention of occupational diseases. In addition to these activities bureau staff are responsible for emergency preparedness planning and emergency response coordination for all Division and Bureau programs in the Center. Staff respond to questions and concerns regarding:

- work-related illness and hazardous exposures;
- certification and training of asbestos-removal workers;
- occupationally related deaths;
- reporting to environmental disease registries for  
Heavy Metal Poisoning (lead, arsenic, cadmium, mercury)  
Occupational Lung Diseases (asthma, asbestosis silicosis, etc.) and  
Pesticide Poisonings.

### **The Bureau has six sections:**

Pesticide Poisoning Registry  
Data Management  
Asbestos Worker Training Certification  
Industrial Hygiene Intervention  
Epidemiologic Surveillance &  
Occupational Health Clinic Network  
Occupational & Environmental  
Medicine Research

Robert Stone, Ph.D.  
David Marion  
Kevin Malone  
Nicholas Pavelchak  
Kitty Gelberg, M.P.H., Ph.D.

Matthew Mauer, D.O., M.P.H

## **Division of Environmental Health Protection**

**Room 500**

**518 402-7510**  
**Acting Director**

**Fax 518 402-7519**  
**Victor Pisani**

The Division houses most of the Center's regulatory programs designed to minimize environmental health threats. Some of the programs protect the population at large, such as public drinking water supplies, food safety in restaurants, and sanitation/ fire safety in hotels. Other programs target populations needing specific interventions to prevent illness, such as preventing lead poisoning and promoting migrant worker health.

# Bureau of Community Environmental Health & Food Protection

Room 515

518 402-7600

Director

Assistant Director

Fax 518 402-7609

Michael Cambridge, R.S.

Douglas Sackett

Bureau staff develop environmental health regulations and associated program guidance to ensure that core environmental health program standards are achieved in the areas listed below. Staff research public health issues which forms the scientific basis for regulation development and provides training to local health departments and district offices. Bureau staff oversee illness and injury incident investigations associated with these regulated facilities and respond to questions and concerns from the public.

Program areas include:

- children's camps;
- food service facilities;
- public beaches and pools;
- migrant farmworker housing;
- hotels and motels;
- adolescent tobacco use prevention;
- clean indoor air act (tobacco smoke);
- ultraviolet tanning facilities;
- tattooing and body piercing;
- environmental lead hazards investigations;
- primary prevention of lead poisoning;
- campgrounds and agricultural fairgrounds;
- public health nuisances;
- mobile home parks; and
- mass gatherings.

## **The Bureau has five sections:**

Food Protection

Recreational Environmental Health

Housing Hygiene

Tobacco Enforcement

Program Standardization Evaluation  
and Reporting

Darby Greco

Timothy Shay

Thomas Carroll

Brian Miner

Melissa Brewer

## Bureau of Water Supply Protection

Room 400

518 402-7650

Director

Coordinator for Research &  
Special Projects

Fax 518 402-7659

Roger Sokol, Ph.D.

Lloyd Wilson, Ph.D.

Bureau staff regulate water suppliers in the state and respond to questions and concerns about the following:

- reports of water-related illness;
- water quality, advisories, or problems with a water provider;
- water treatment and the design of water treatment systems;
- water system security, emergency preparedness, and response;
- water related research and environmental risk assessment;
- water related critical infrastructure protection and geographic information system support;
- practical ways to reduce exposure to possible contaminants in drinking water;
- watershed protection;
- standards for water treatment and quality;
- water system improvement funding;
- small system technical assistance;
- bottled and bulk water provider certification;
- water treatment and distribution system operator certification;
- private residential water and onsite wastewater treatment systems; and
- recreational bathing facilities design.

### The Bureau has six sections:

Design

Operations

Residential Sanitation

Recreational Engineering &

Information Systems/Compliance

New York City Watershed

Certification

Michael Montysko, P.E.

Craig Jackson, P.E.

Ben Pierson, P.E.

Tina Hunt, P.E.

Pamela Young, Ph.D.

Teresa Boepple-Swider, P.E.

## Field Coordination Unit

Room 400

518 402-7739

Director

Fax 518 402-7509

Claudine Jones Rafferty

Unit staff work closely with the Regional Environmental Health Directors and are the chief liaison between regional staff and Center for Environmental Health (CEH) staff, primarily the Division of Environmental Health Protection (DEHP). Unit staff

coordinate with division and regional staff to standardize, monitor, assess and oversee implementation of environmental health protection programs, statewide. Unit staff coordinate with central, regional, district and local health department offices to support professional development of environmental health staff and manages the Division's professional engineer continuing education credit program.

## **Division of Environmental Health Investigation** Room 500

**518 402-7501**  
**Acting Director**

**Fax 518 402-7519**  
**Adela Salame-Alfie, Ph.D.**

The Division identifies environmental risk factors, evaluates exposures and implements programs to reduce sickness and death. It also assesses soil, water, and air at and near contaminated sites to monitor hazards and potential exposures to homes, schools and businesses. It houses regulatory and non-regulatory programs in the areas of radiation protection and hazardous waste remediation. It also manages the department's Preventive Health and Health Services Block Grant and a Cooperative Agreement with the Agency for Toxic Substance and Disease Registry to conduct health assessments.

## **Bureau of Environmental Radiation Protection** Room 530

**518 402-7550**  
**Director**  
**Assistant Director**

**Fax 518 402-7554**  
**Stephen Gavitt, C.H.P.**  
**Robert Dansereau**

Bureau staff address public health risks from exposure to radiation. Major program areas are:

- registration and use of x-ray machines or other radiation sources;
- licensing of radioactive material;
- licensing and registration of radiologic technologists;
- home testing for radon and radon reduction measures;
- health effects from radiation, including electromagnetic fields;
- any site-related radiation concerns;
- response to radiation emergencies or incidents.

### **The Bureau has four sections:**

Radiation Equipment  
Radioactive Materials  
Environmental Radiation/Radon and  
Emergency Response  
Inspection and Enforcement

Alexander Damiani  
Charles Burns  
Cynthia Costello  
Robert Snyder

# Bureau of Environmental Exposure Investigation

Room 300

**518 402-7860**

**Acting Director**

**Special Assistant to the Director**

**Fax 518 402-7859**

**Steven Bates, P.E.**

**Krista Anders, Ph.D.**

Bureau staff investigate the potential for human exposure from environmental contamination, primarily at inactive hazardous waste sites and brownfield sites. Activities include water sampling and treatment; dump site, construction site, and spill investigations; and emergency event investigations. For every state, federal superfund, brownfield, and voluntary clean-up site, a Bureau specialist is assigned to coordinate and communicate health-related activities. In addition, Bureau staff prepare public health assessments for federal superfund sites under an agreement with the federal Agency for Toxic Substances and Disease Registry (ATSDR). Staff also conduct exposure investigations as part of the state's Cancer Surveillance Improvement Initiative.

## **The Bureau has four sections and two units:**

Metro

Southern

Northern

Central

ATSDR Unit

Reporting & Management Unit

Joe Crua

Charlotte Bethoney

Richard Fedigan

Geoffrey Laccetti

Donald Miles

Kate McLaughlin

# NYSDOH Regional and Field Structure

District Offices carry out environmental health protection programs in the 21 counties that do not deliver environmental health services through county health departments. They ensure that suitable water, food, housing, and recreational facilities are provided to the public. The District Offices identify, investigate, and resolve actual and potential health hazards caused by environmental factors. Regional Offices provide technical and program support, as well as monitor and evaluate implementation of environmental health protection programs in District Offices and local health departments within the regional jurisdiction.

Telephone numbers for regional, district, county, and city health departments are listed below. A map of the regional and field structure is on page 12.

**Western Region Buffalo, Rochester 585 423-8072**  
**Regional Environmental Health Program Director** Ralph Van Houten

**Geneva District Office** Nicholas Rich, Director 315 789-3030  
(Ontario, Wayne, Yates)

**Hornell District Office** Thomas Klaseus, Director 607 324-8371  
(Steuben, Schuyler)

Allegany	585 268-9254	Livingston	585 243-7280
Cattaraugus	716 373-8050	Monroe	585 753-5461
Chautauqua	716 753-4769	Niagara	716 439-7444
Chemung	607 737-2019	Orleans	585 589-3250
Erie	716 961-6800	Seneca	315 539-1925
Genesee	585 344-2580	Wyoming	585 786-8894

**Central Region Syracuse 315 477-8150**  
**Acting Regional Environmental Health Program Director** John Strepelis, P.E., M.E.

**Canton District Office** Bruce Stone, Director 315 386-1040  
(St. Lawrence)

**Watertown District Office** Sheri Palmer, Director 315 785-2277  
(Jefferson, Lewis)

Broome	607 778-2887	Oneida	315 798-5064
Cayuga	315 253-1405	Onondaga	315 435-6623
Chenango	607 337-1673	Oswego	315 349-3557
Cortland	607 753-5035	Tioga	607 687-8565
Madison	315 366-2526	Tompkins	607 274-6688

<b>Capital Region</b>	<b>Troy</b>	<b>518 408-5396</b>
<b>Regional Environmental Health Program Director</b>		<b>Dennis Crowell</b>

<b>Glens Falls District Office</b> (Saratoga, Warren, Washington)	Anita Gabalski, Director	518 793-3893
<b>Herkimer District Office</b> (Fulton, Herkimer, Montgomery)	Donald Van Patten, Dir.	315 866-6879
<b>Oneonta District Office</b> (Delaware, Greene, Otsego)	Audrey Lewis, Director	607 432-3911
<b>Saranac Lake District Office</b> (Essex, Franklin, Hamilton)	Jules Callaghan, Director	518 891-1800

Albany	518 447-4620	Rensselaer	518 270-2632
Clinton	518 565-4870	Schenectady	518 386-2818
Columbia	518 828-3358	Schoharie	518 295-8382

<b>Metropolitan Region</b>	<b>New York City</b>	<b>212 417-4100</b>
<b>Regional Environmental Health Program Director</b>		Brian Devine
(Located in Monticello District Office)		845 794-2045

New Rochelle Field Office	914 654-7000
Central Islip Field Office	631 851-3639

<b>Monticello District Office</b> (Sullivan)	Michael Duffy, Acting Dir.	845 794-2045
---	----------------------------	--------------

Dutchess	845 486-3404	Rockland	845 364-2608
Nassau	516 227-9723	Suffolk	631 852-5800
Orange	845 291-2331	Ulster	845 340-3010
Putnam	845 808-1390	Westchester	914 813-5171

---

New York City Department of Health & Mental Hygiene  
212 639-9675 or 311 within NYC

# NYSDOH Regional and Field Structure

