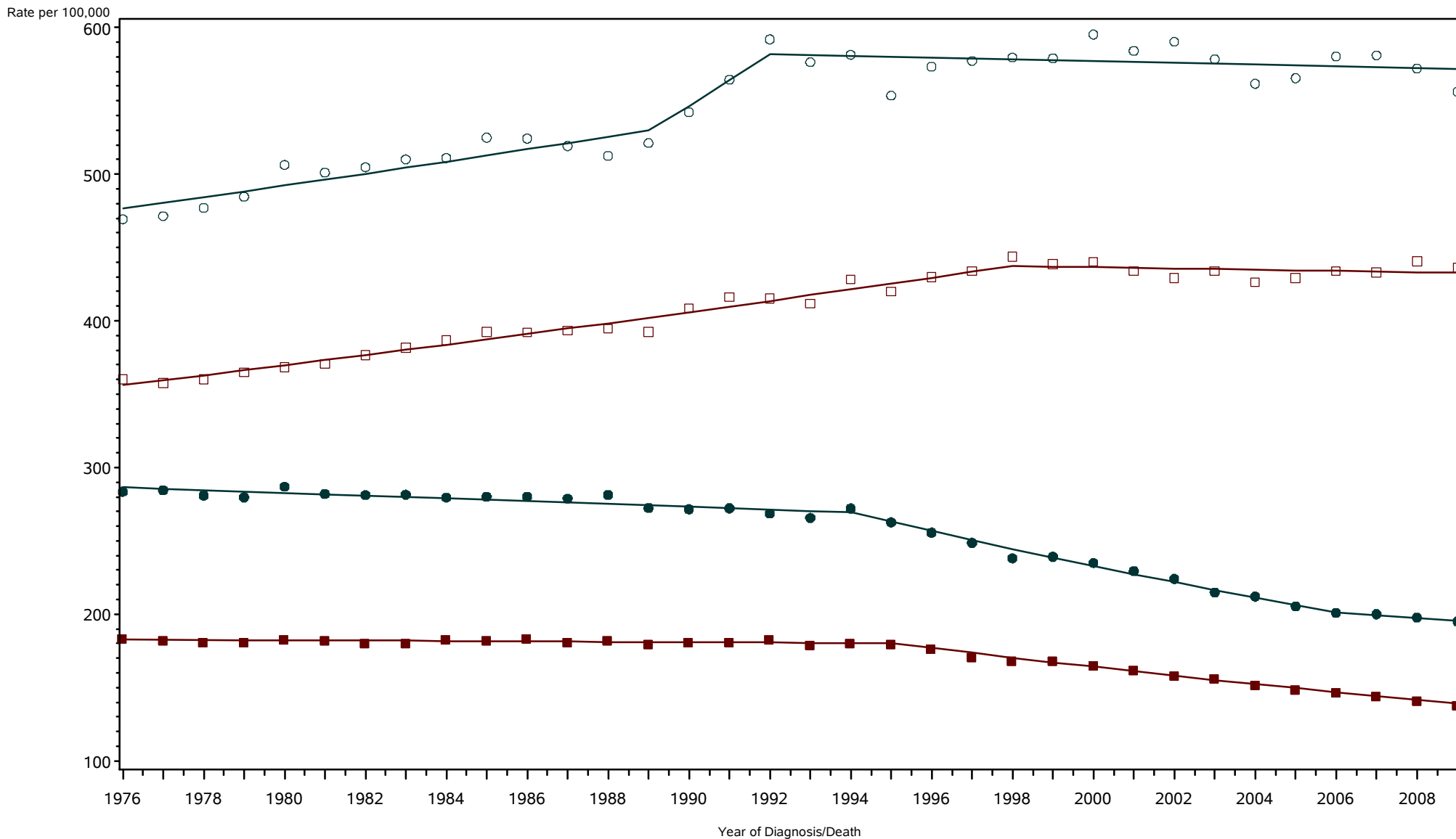


New York State Cancer Registry, NYSDOH
 Age-Adjusted Cancer Incidence and Mortality Rates,
 New York State, 1976-2009

All Invasive Malignant Tumors

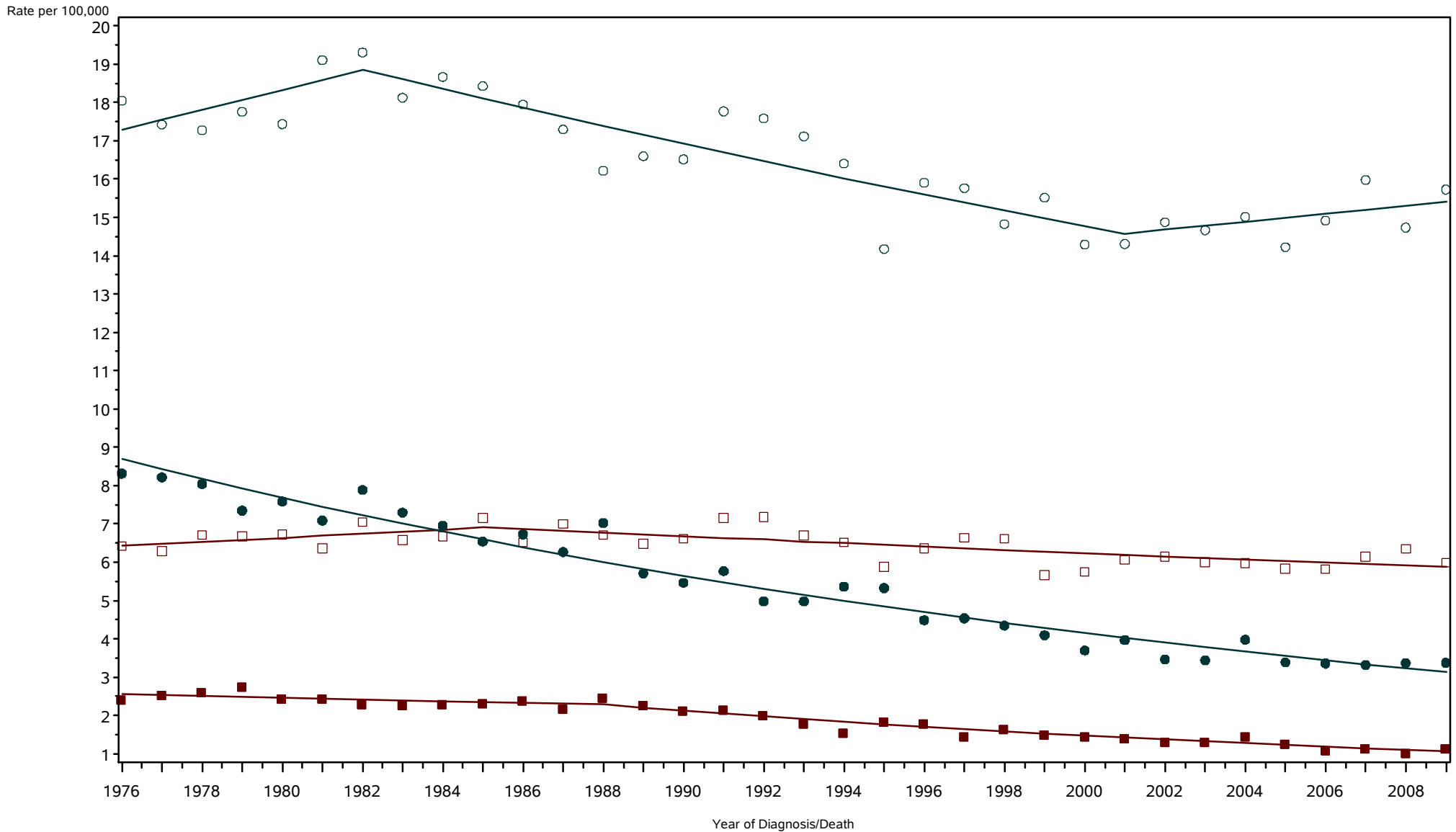


○ ○ ○ Incidence among Males □ □ □ Incidence among Females ● ● ● Mortality among Males ■ ■ ■ Mortality among Females

Rates are age-adjusted to the 2000 US population standard.
 Regression lines are calculated using the Joinpoint Regression Program Version 3.4.3, April 2010, National Cancer Institute (<http://srab.cancer.gov/joinpoint/>).
 The data shown here are not identical to the data in the corresponding 2005-2009 incidence table. See the rationale in 'Considerations When Comparing Cancer Statistics Over Time.'

New York State Cancer Registry, NYSDOH
Age-Adjusted Cancer Incidence and Mortality Rates,
New York State, 1976-2009

Oral cavity and pharynx

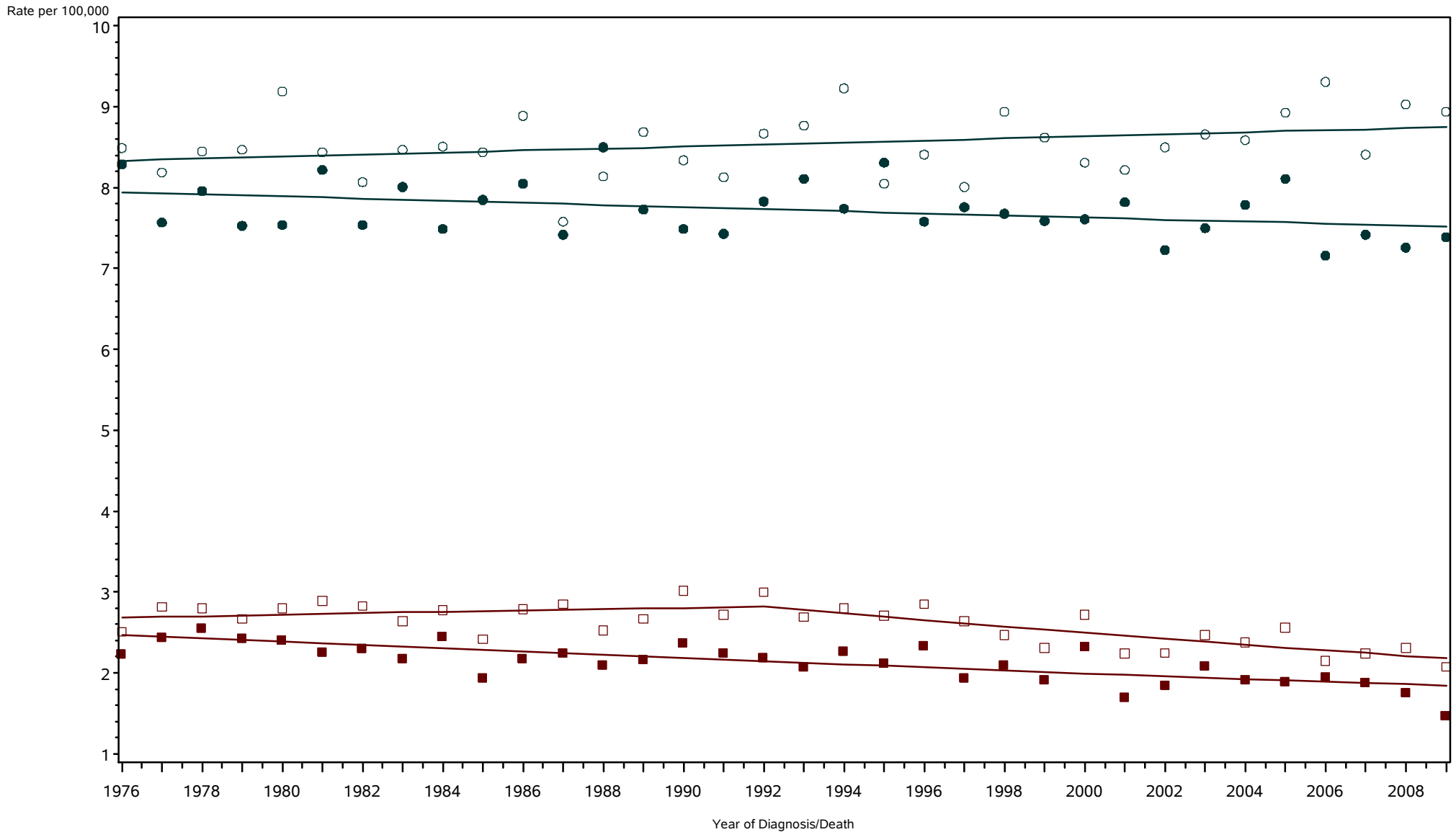


○ ○ ○ Incidence among Males □ □ □ Incidence among Females ● ● ● Mortality among Males ■ ■ ■ Mortality among Females

Rates are age-adjusted to the 2000 US population standard.
Regression lines are calculated using the Joinpoint Regression Program Version 3.4.3, April 2010, National Cancer Institute (<http://srab.cancer.gov/joinpoint/>).
The data shown here are not identical to the data in the corresponding 2005-2009 incidence table. See the rationale in 'Considerations When Comparing Cancer Statistics Over Time.'

New York State Cancer Registry, NYSDOH
Age-Adjusted Cancer Incidence and Mortality Rates,
New York State, 1976-2009

Esophagus

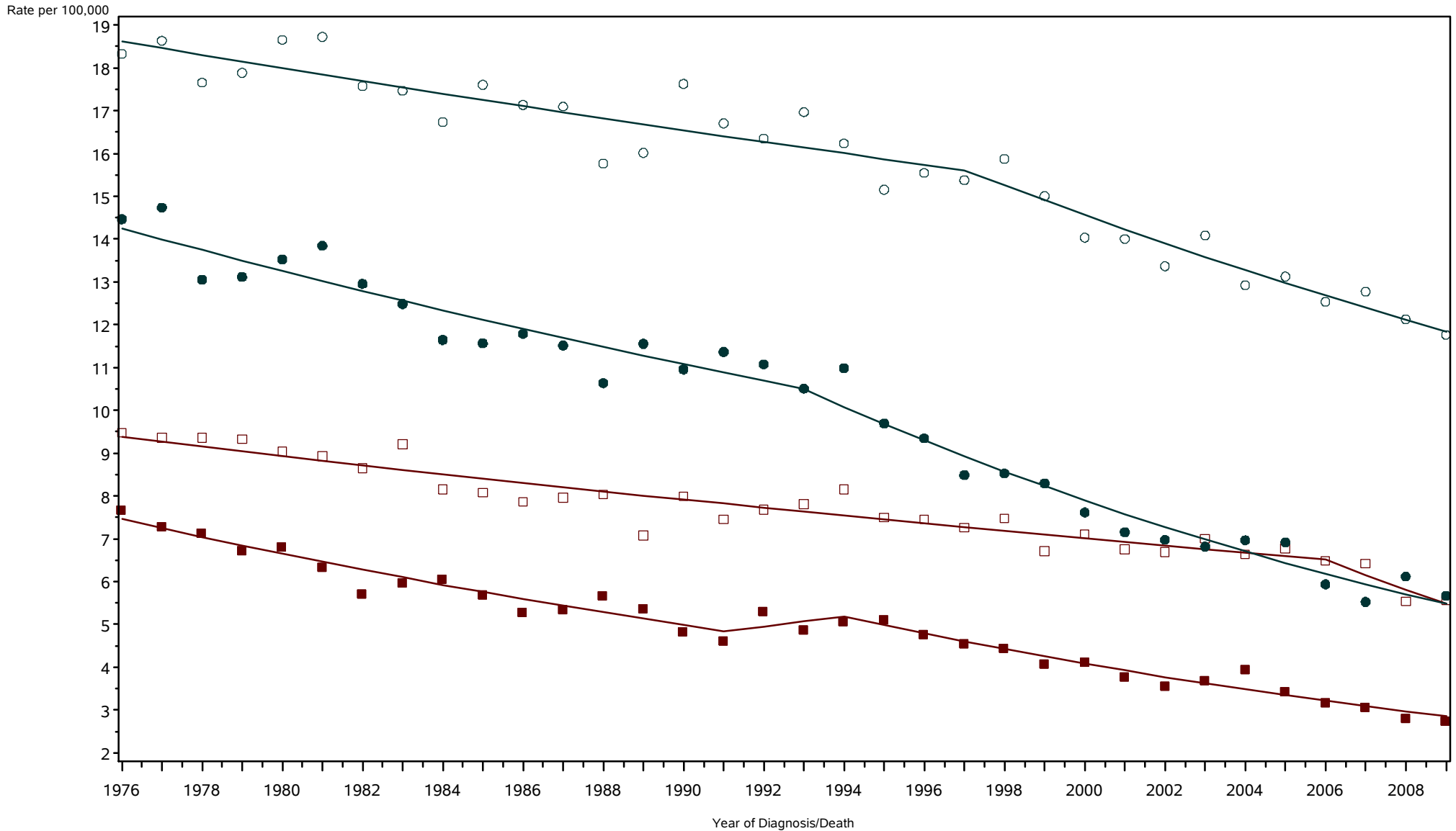


○ ○ ○ Incidence among Males □ □ □ Incidence among Females ● ● ● Mortality among Males ■ ■ ■ Mortality among Females

Rates are age-adjusted to the 2000 US population standard.
Regression lines are calculated using the Joinpoint Regression Program Version 3.4.3, April 2010, National Cancer Institute (<http://srab.cancer.gov/joinpoint/>).
The data shown here are not identical to the data in the corresponding 2005-2009 incidence table. See the rationale in 'Considerations When Comparing Cancer Statistics Over Time.'

New York State Cancer Registry, NYSDOH
 Age-Adjusted Cancer Incidence and Mortality Rates,
 New York State, 1976-2009

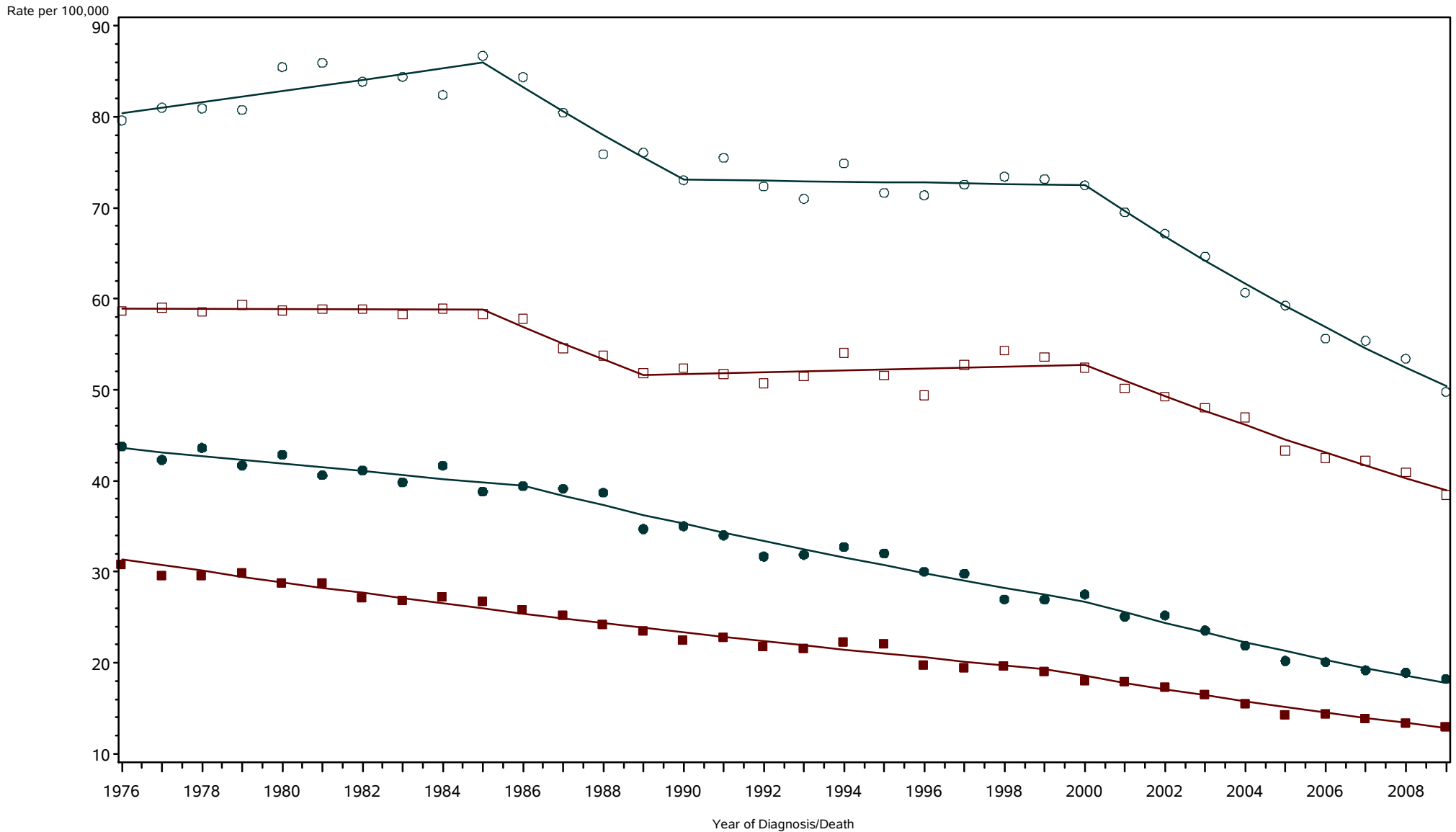
Stomach



Rates are age-adjusted to the 2000 US population standard.
 Regression lines are calculated using the Joinpoint Regression Program Version 3.4.3, April 2010, National Cancer Institute (<http://srab.cancer.gov/joinpoint/>).
 The data shown here are not identical to the data in the corresponding 2005-2009 incidence table. See the rationale in 'Considerations When Comparing Cancer Statistics Over Time.'

New York State Cancer Registry, NYSDOH
 Age-Adjusted Cancer Incidence and Mortality Rates,
 New York State, 1976-2009

Colorectal

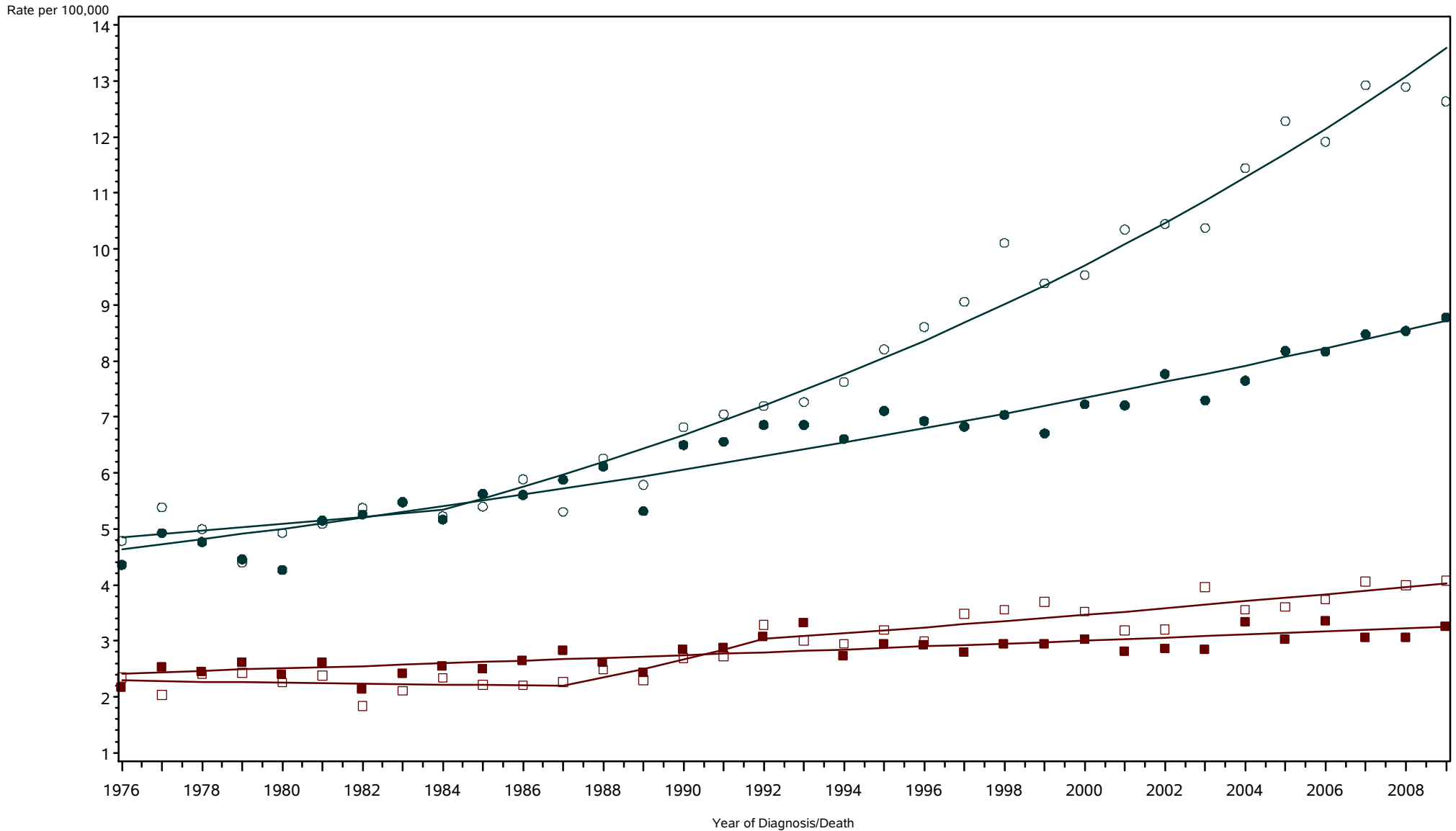


○ ○ ○ Incidence among Males □ □ □ Incidence among Females ● ● ● Mortality among Males ■ ■ ■ Mortality among Females

Rates are age-adjusted to the 2000 US population standard.
 Regression lines are calculated using the Joinpoint Regression Program Version 3.4.3, April 2010, National Cancer Institute (<http://srab.cancer.gov/joinpoint/>).
 The data shown here are not identical to the data in the corresponding 2005-2009 incidence table. See the rationale in 'Considerations When Comparing Cancer Statistics Over Time.'

New York State Cancer Registry, NYSDOH
Age-Adjusted Cancer Incidence and Mortality Rates,
New York State, 1976-2009

Liver / intrahepatic bile duct

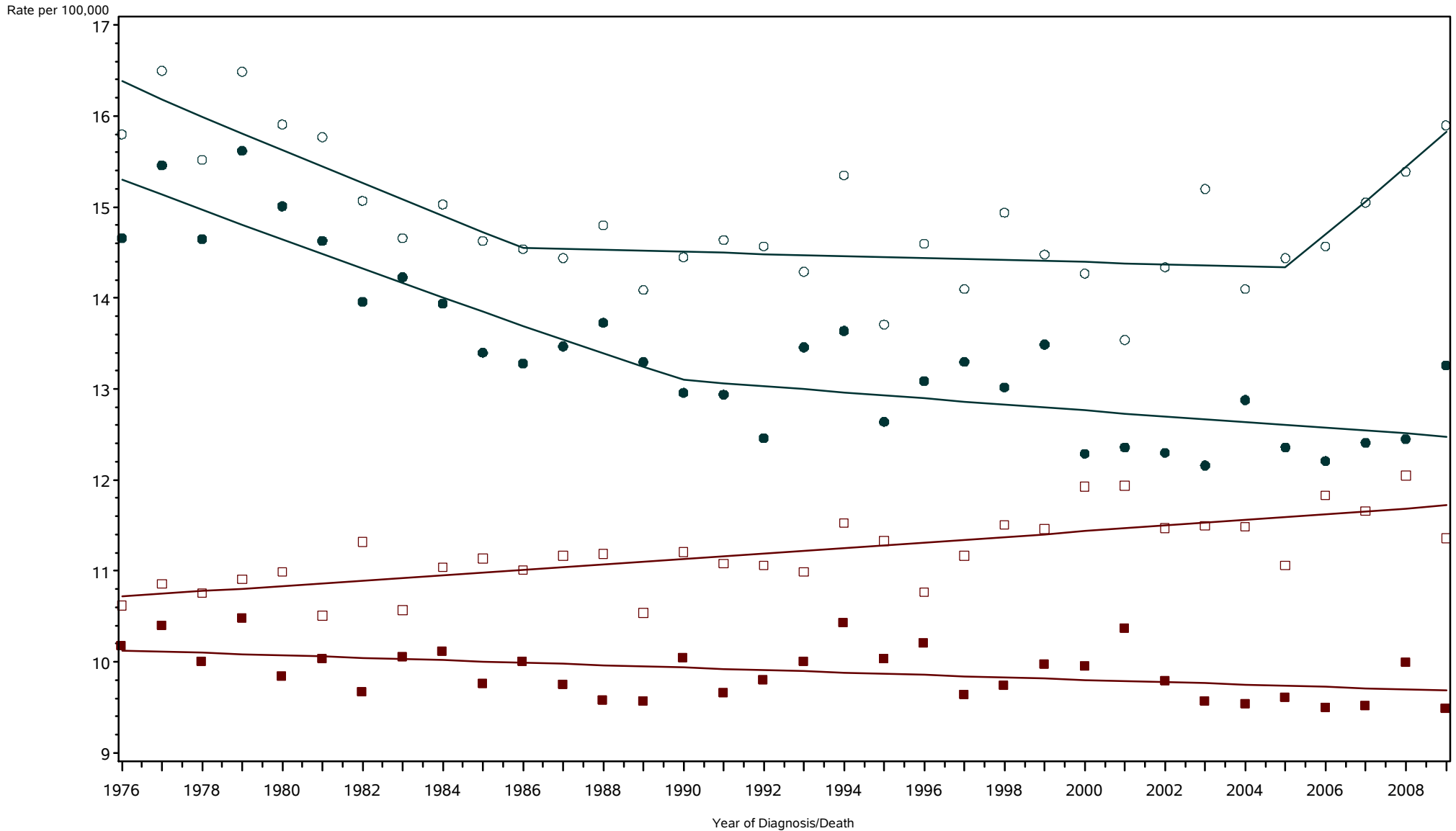


○ ○ ○ Incidence among Males □ □ □ Incidence among Females ● ● ● Mortality among Males ■ ■ ■ Mortality among Females

Rates are age-adjusted to the 2000 US population standard.
Regression lines are calculated using the Joinpoint Regression Program Version 3.4.3, April 2010, National Cancer Institute (<http://srab.cancer.gov/joinpoint/>).
The data shown here are not identical to the data in the corresponding 2005-2009 incidence table. See the rationale in 'Considerations When Comparing Cancer Statistics Over Time.'

New York State Cancer Registry, NYSDOH
 Age-Adjusted Cancer Incidence and Mortality Rates,
 New York State, 1976-2009

Pancreas

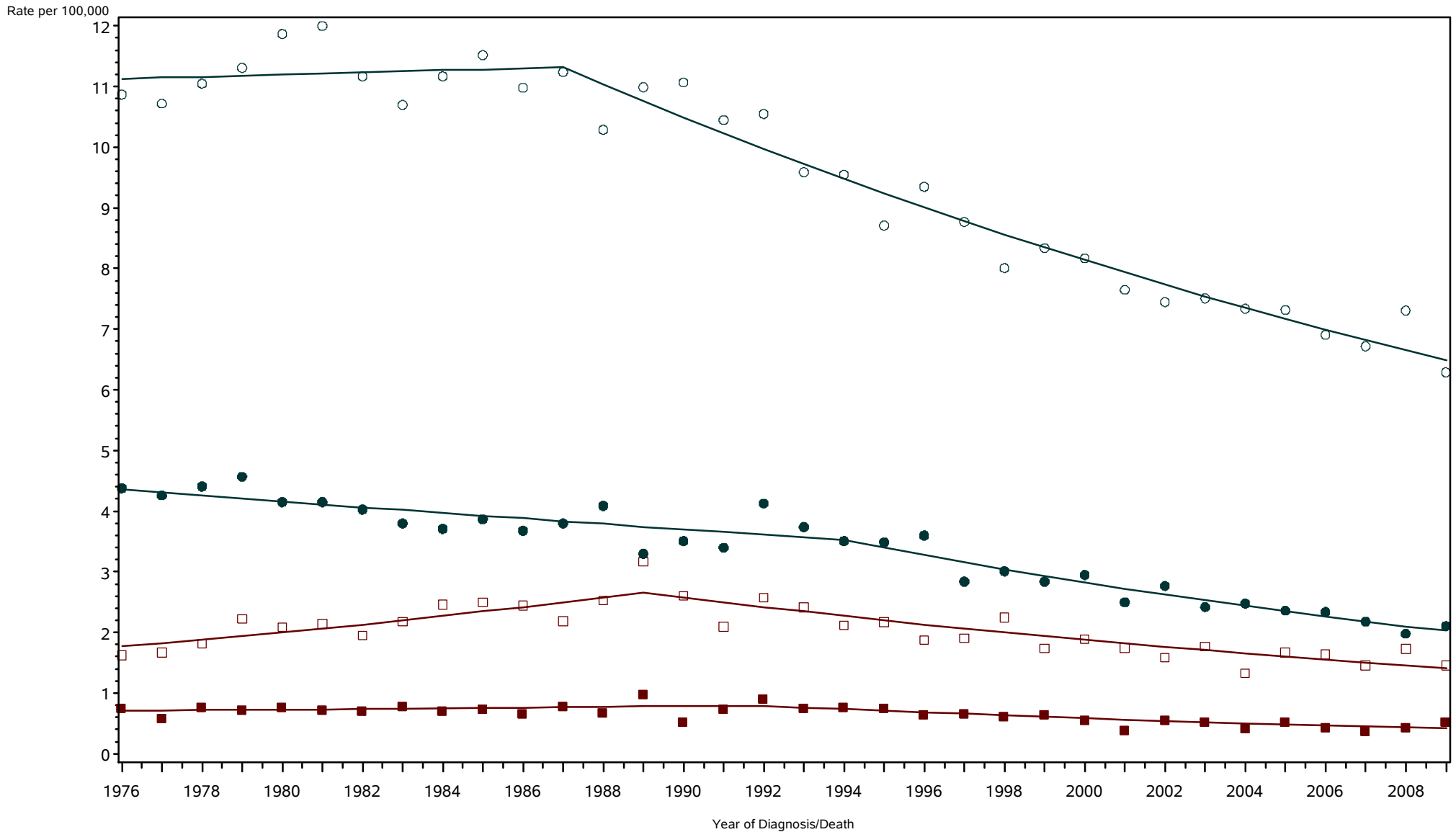


○ ○ ○ Incidence among Males □ □ □ Incidence among Females ● ● ● Mortality among Males ■ ■ ■ Mortality among Females

Rates are age-adjusted to the 2000 US population standard.
 Regression lines are calculated using the Joinpoint Regression Program Version 3.4.3, April 2010, National Cancer Institute (<http://srab.cancer.gov/joinpoint/>).
 The data shown here are not identical to the data in the corresponding 2005-2009 incidence table. See the rationale in 'Considerations When Comparing Cancer Statistics Over Time.'

New York State Cancer Registry, NYSDOH
 Age-Adjusted Cancer Incidence and Mortality Rates,
 New York State, 1976-2009

Larynx

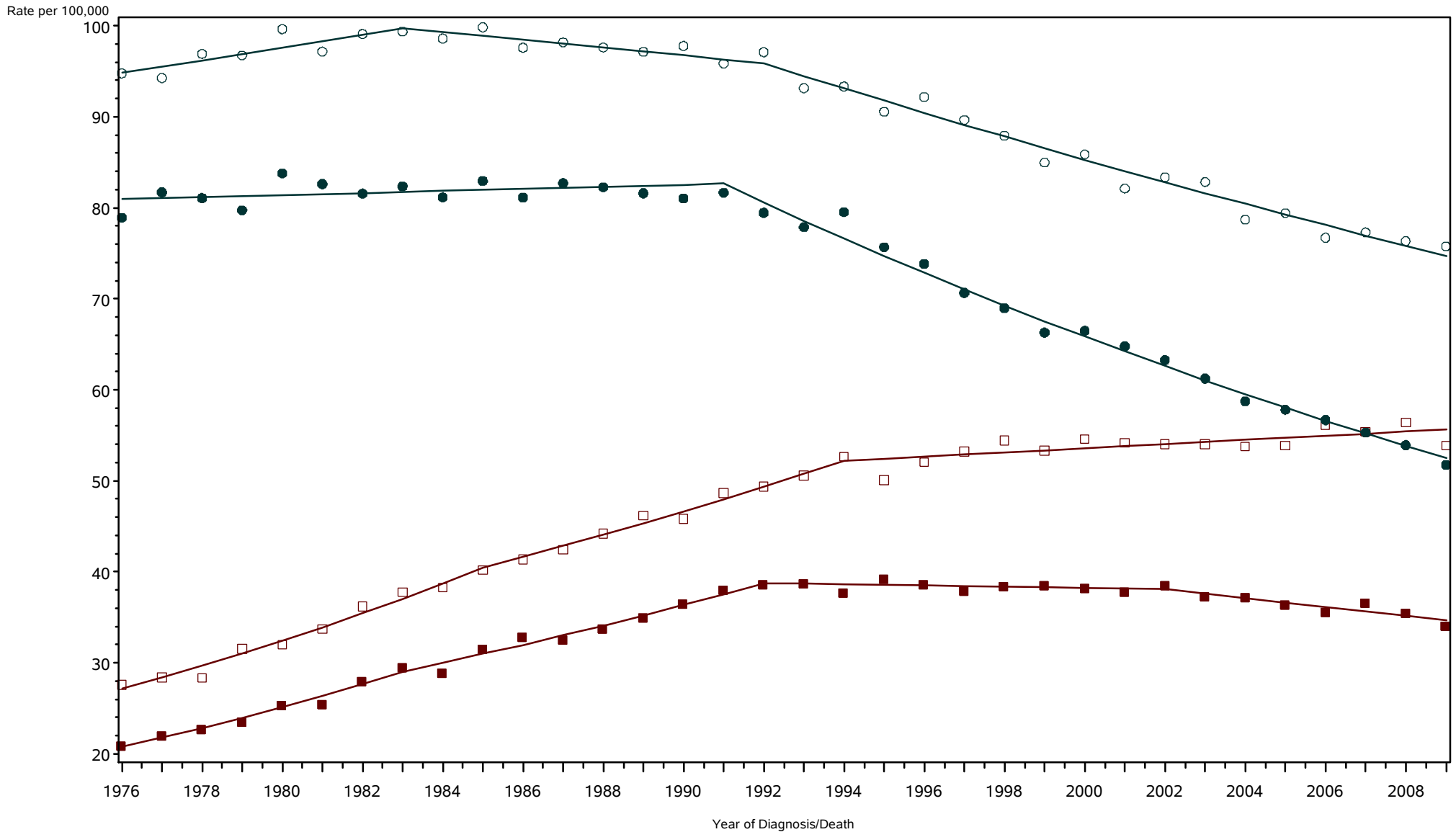


○ ○ ○ Incidence among Males □ □ □ Incidence among Females ● ● ● Mortality among Males ■ ■ ■ Mortality among Females

Rates are age-adjusted to the 2000 US population standard.
 Regression lines are calculated using the Joinpoint Regression Program Version 3.4.3, April 2010, National Cancer Institute (<http://srab.cancer.gov/joinpoint/>).
 The data shown here are not identical to the data in the corresponding 2005-2009 incidence table. See the rationale in 'Considerations When Comparing Cancer Statistics Over Time.'

New York State Cancer Registry, NYSDOH
 Age-Adjusted Cancer Incidence and Mortality Rates,
 New York State, 1976-2009

Lung and bronchus

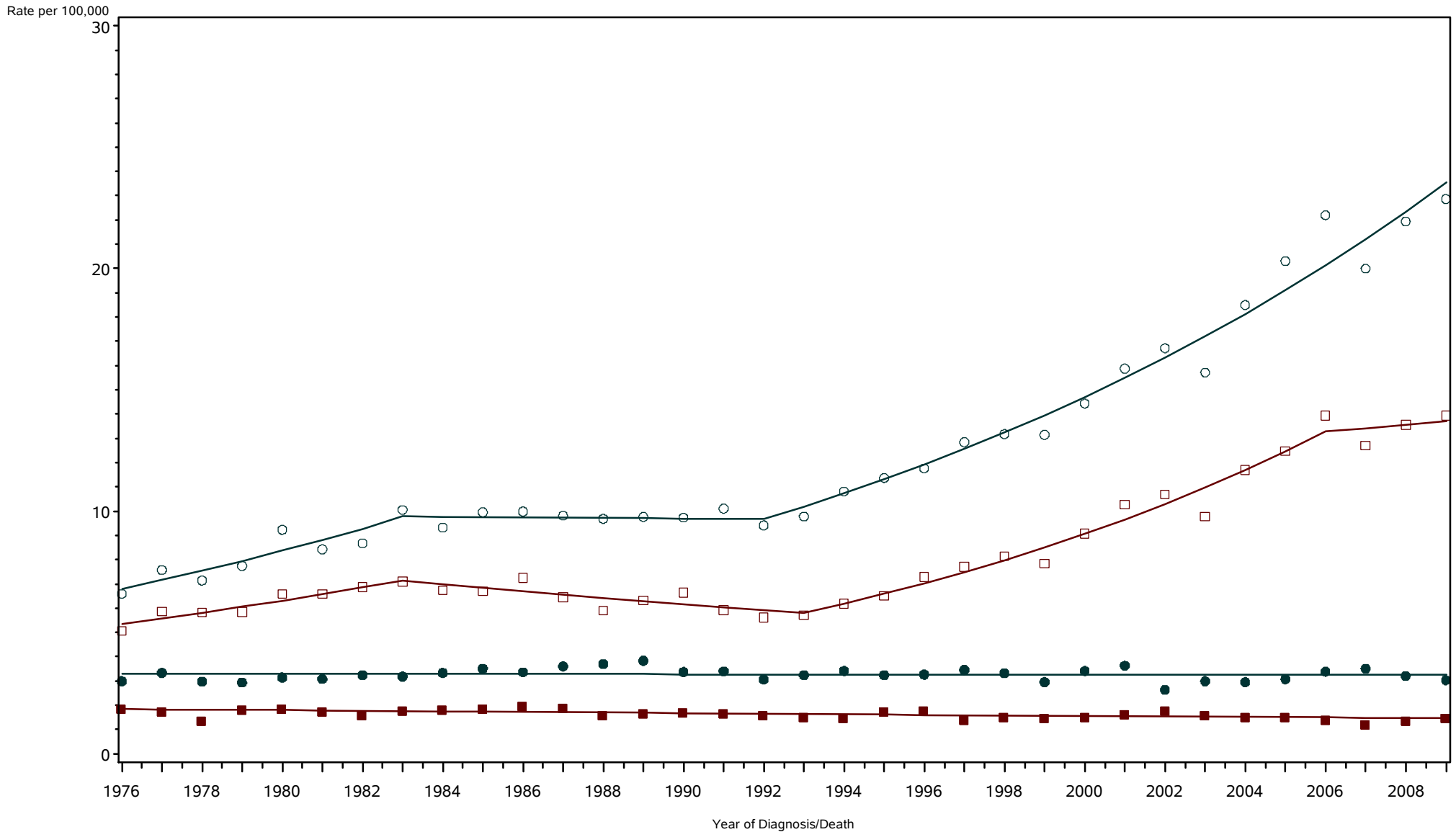


○ ○ ○ Incidence among Males □ □ □ Incidence among Females ● ● ● Mortality among Males ■ ■ ■ Mortality among Females

Rates are age-adjusted to the 2000 US population standard.
 Regression lines are calculated using the Joinpoint Regression Program Version 3.4.3, April 2010, National Cancer Institute (<http://srab.cancer.gov/joinpoint/>).
 The data shown here are not identical to the data in the corresponding 2005-2009 incidence table. See the rationale in 'Considerations When Comparing Cancer Statistics Over Time.'

New York State Cancer Registry, NYSDOH
Age-Adjusted Cancer Incidence and Mortality Rates,
New York State, 1976-2009

Melanoma of the skin

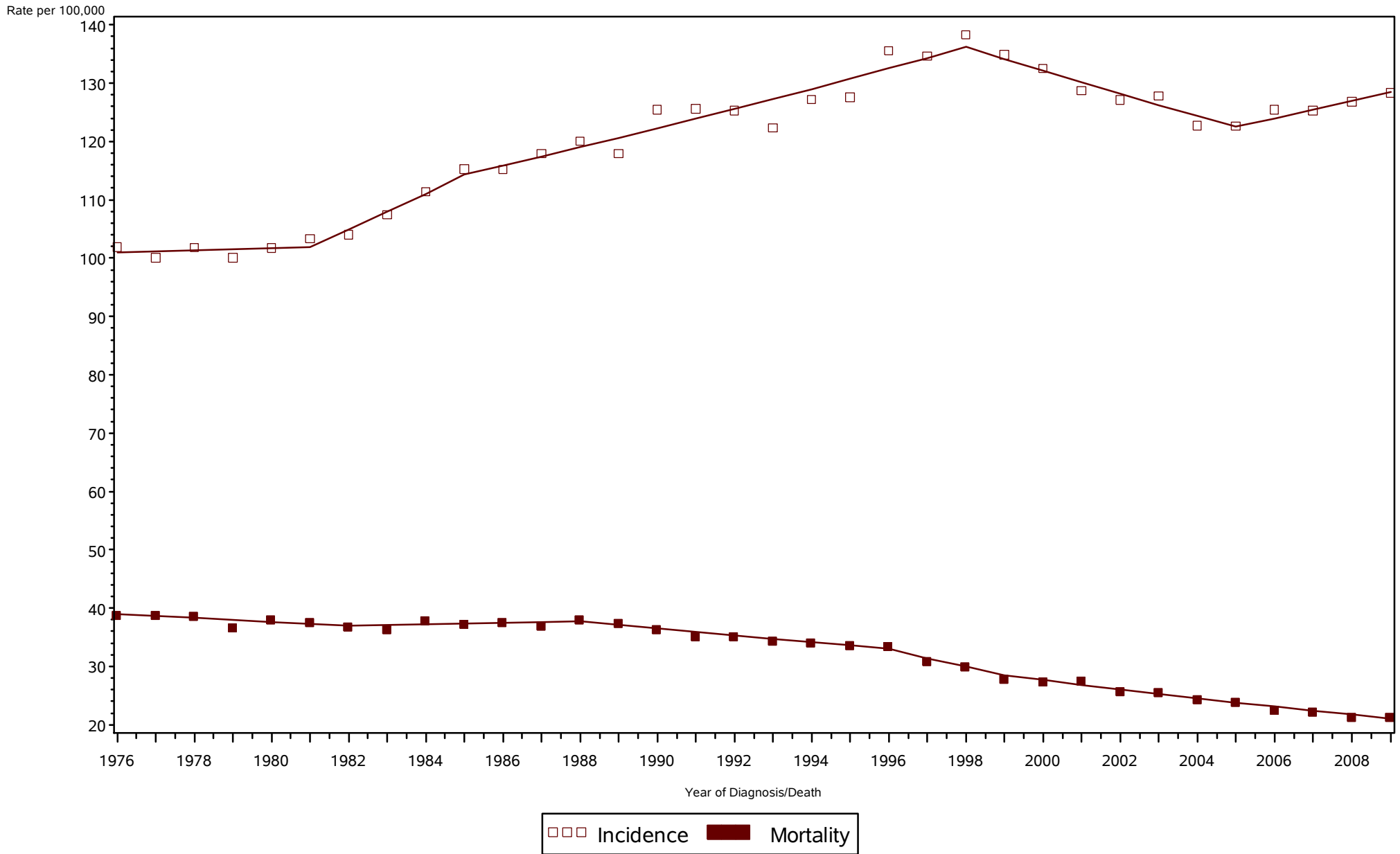


○ ○ ○ Incidence among Males □ □ □ Incidence among Females ● ● ● Mortality among Males ■ ■ ■ Mortality among Females

Rates are age-adjusted to the 2000 US population standard.
Regression lines are calculated using the Joinpoint Regression Program Version 3.4.3, April 2010, National Cancer Institute (<http://srab.cancer.gov/joinpoint/>).
The data shown here are not identical to the data in the corresponding 2005-2009 incidence table. See the rationale in 'Considerations When Comparing Cancer Statistics Over Time.'

New York State Cancer Registry, NYSDOH
Age-Adjusted Cancer Incidence and Mortality Rates,
New York State, 1976-2009

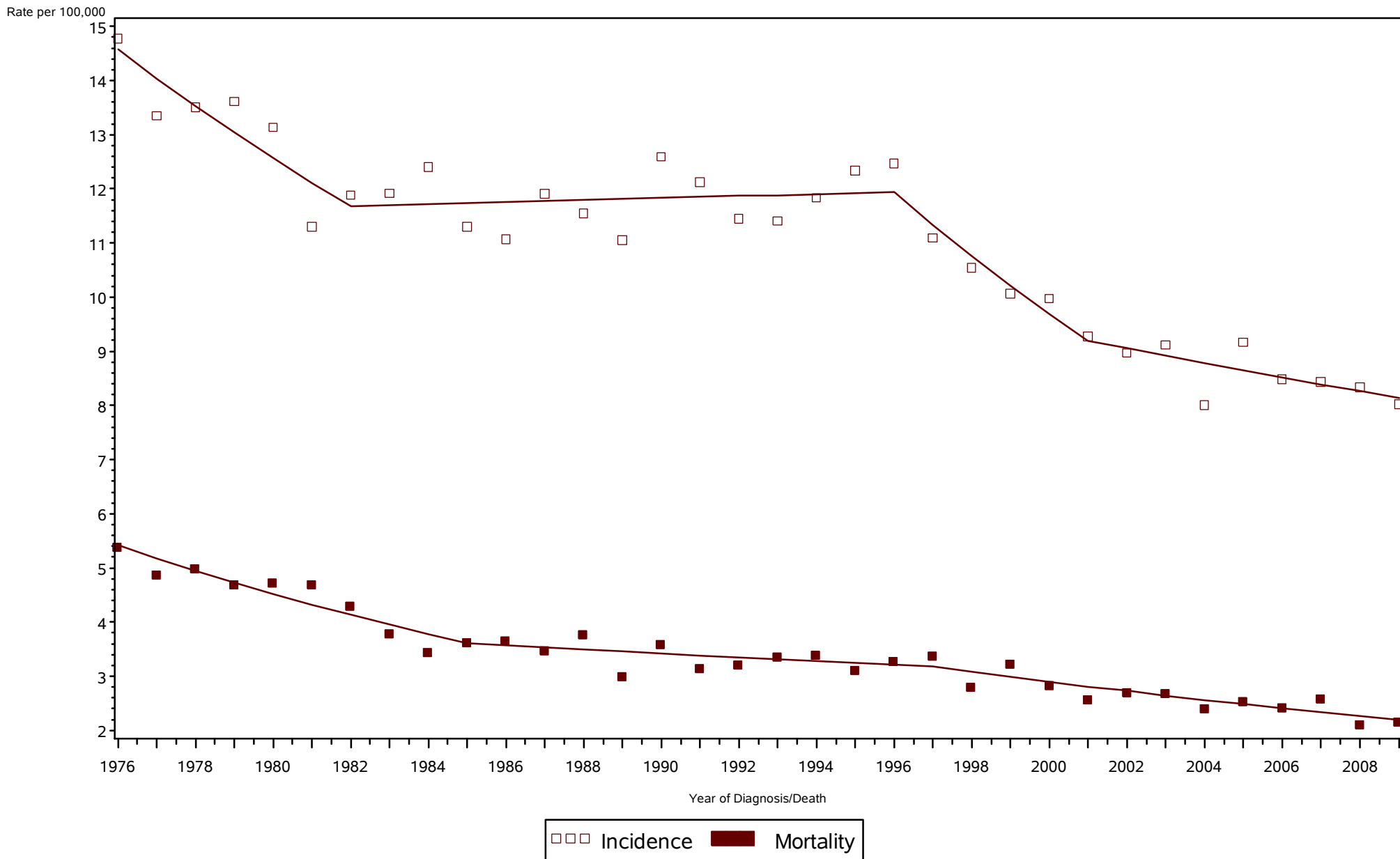
Female breast



Rates are age-adjusted to the 2000 US population standard.
Regression lines are calculated using the Joinpoint Regression Program Version 3.4.3, April 2010, National Cancer Institute (<http://srab.cancer.gov/joinpoint/>).
The data shown here are not identical to the data in the corresponding 2005-2009 incidence table. See the rationale in 'Considerations When Comparing Cancer Statistics Over Time.'

New York State Cancer Registry, NYSDOH
Age-Adjusted Cancer Incidence and Mortality Rates,
New York State, 1976-2009

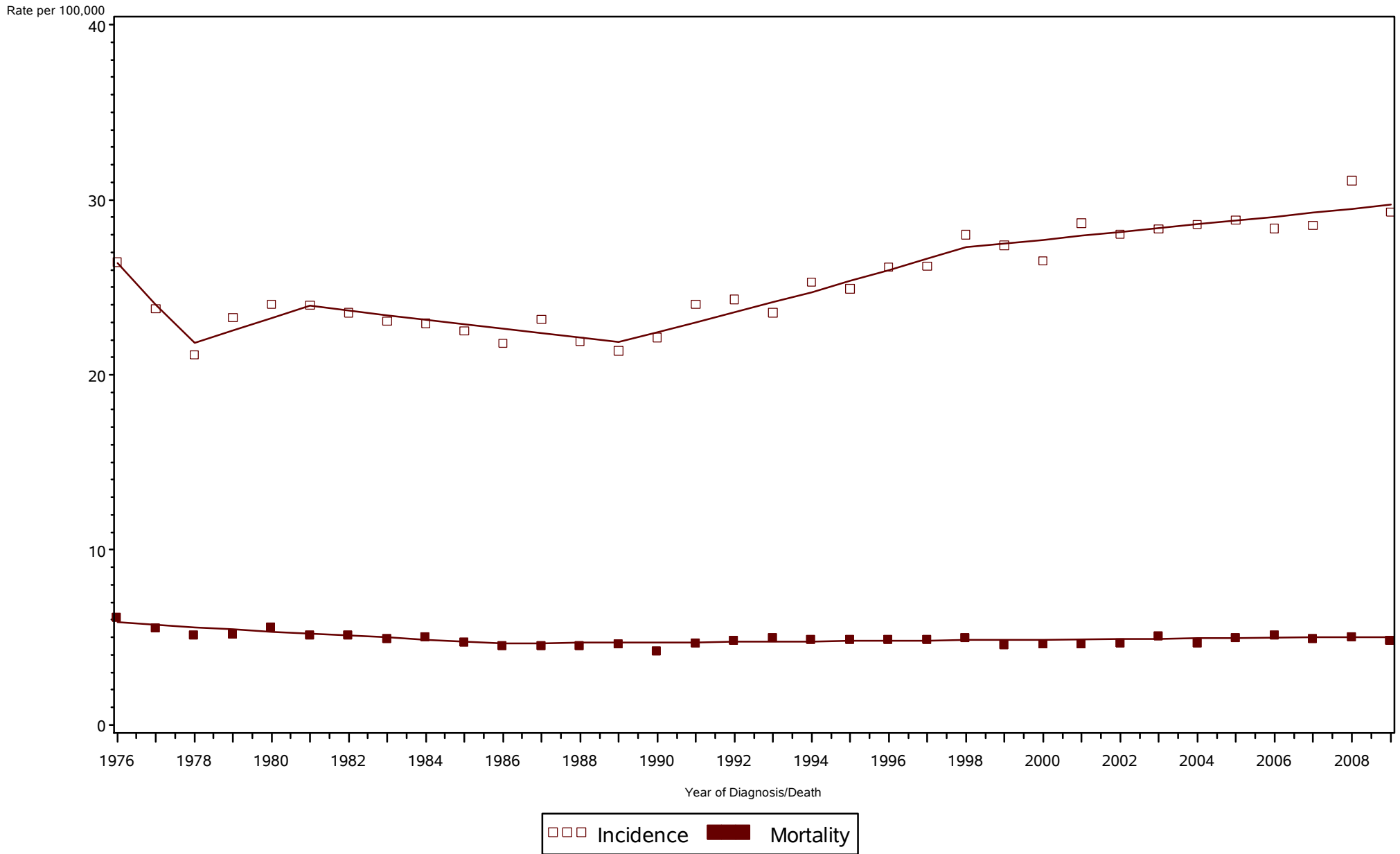
Cervix uteri



Rates are age-adjusted to the 2000 US population standard.
Regression lines are calculated using the Joinpoint Regression Program Version 3.4.3, April 2010, National Cancer Institute (<http://srab.cancer.gov/joinpoint/>).
The data shown here are not identical to the data in the corresponding 2005-2009 incidence table. See the rationale in 'Considerations When Comparing Cancer Statistics Over Time.'

New York State Cancer Registry, NYSDOH
Age-Adjusted Cancer Incidence and Mortality Rates,
New York State, 1976-2009

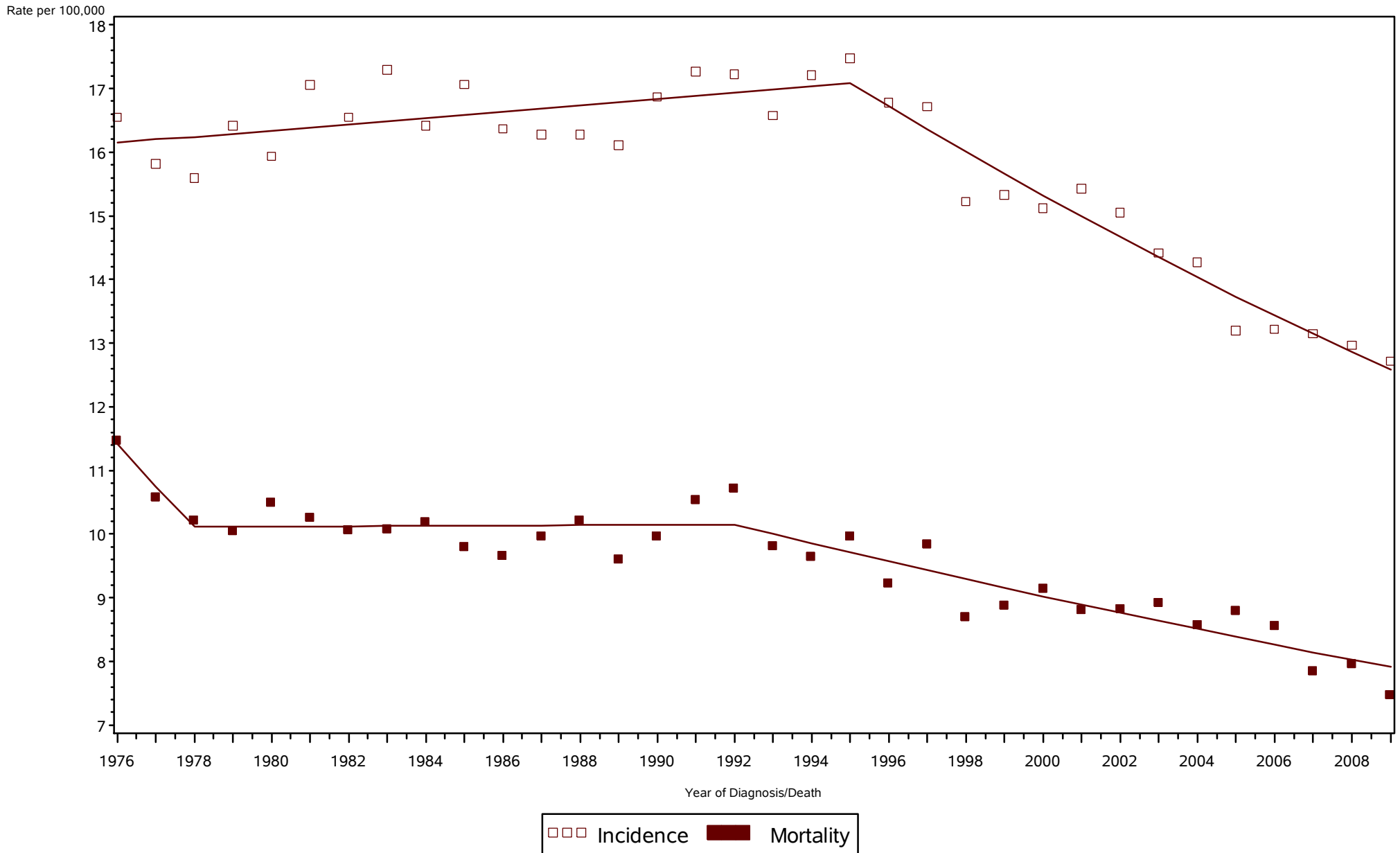
Corpus uterus and NOS



Rates are age-adjusted to the 2000 US population standard.
Regression lines are calculated using the Joinpoint Regression Program Version 3.4.3, April 2010, National Cancer Institute (<http://srab.cancer.gov/joinpoint/>).
The data shown here are not identical to the data in the corresponding 2005-2009 incidence table. See the rationale in 'Considerations When Comparing Cancer Statistics Over Time.'

New York State Cancer Registry, NYSDOH
Age-Adjusted Cancer Incidence and Mortality Rates,
New York State, 1976-2009

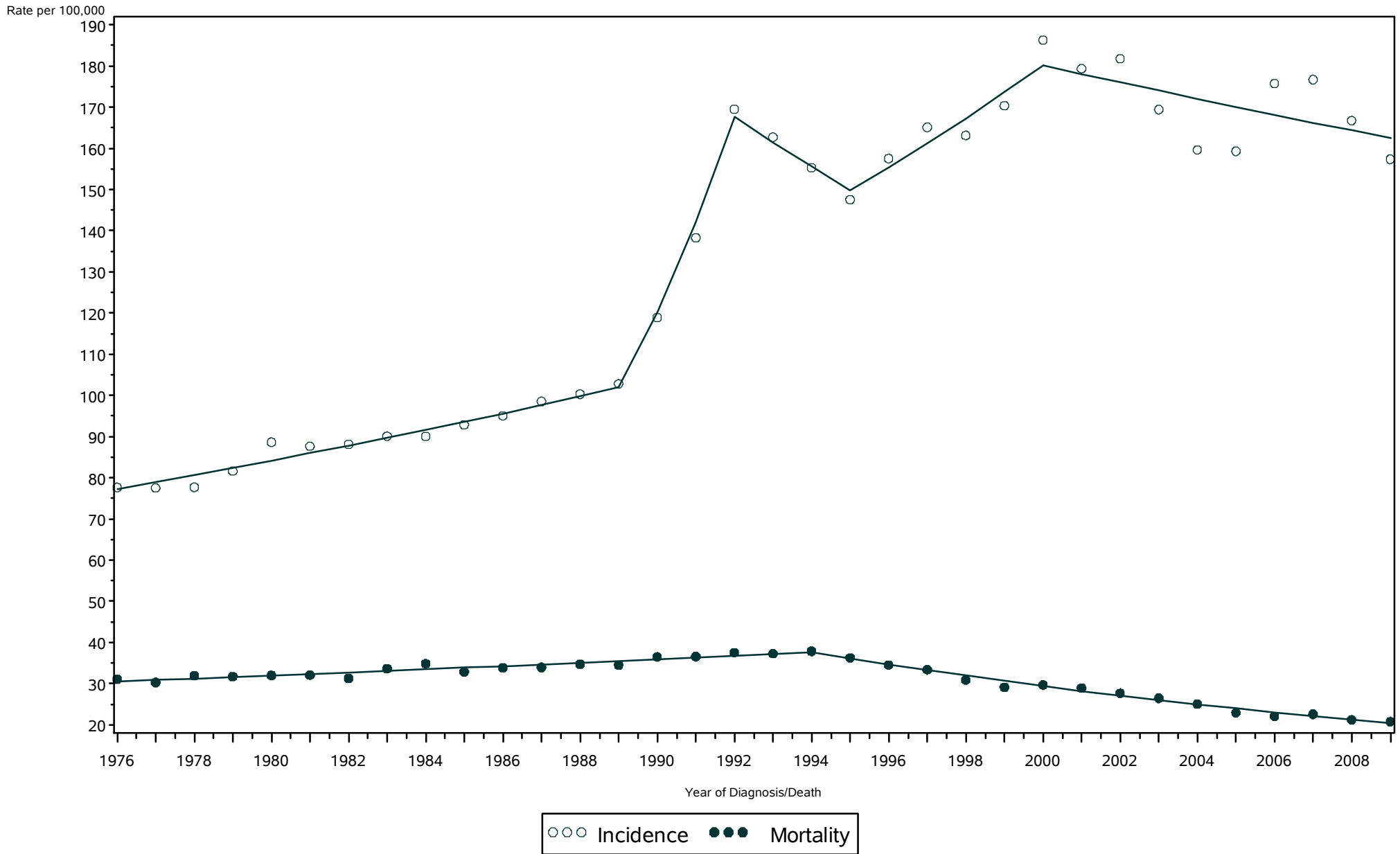
Ovary



Rates are age-adjusted to the 2000 US population standard.
Regression lines are calculated using the Joinpoint Regression Program Version 3.4.3, April 2010, National Cancer Institute (<http://srab.cancer.gov/joinpoint/>).
The data shown here are not identical to the data in the corresponding 2005-2009 incidence table. See the rationale in 'Considerations When Comparing Cancer Statistics Over Time.'

New York State Cancer Registry, NYSDOH
Age-Adjusted Cancer Incidence and Mortality Rates,
New York State, 1976-2009

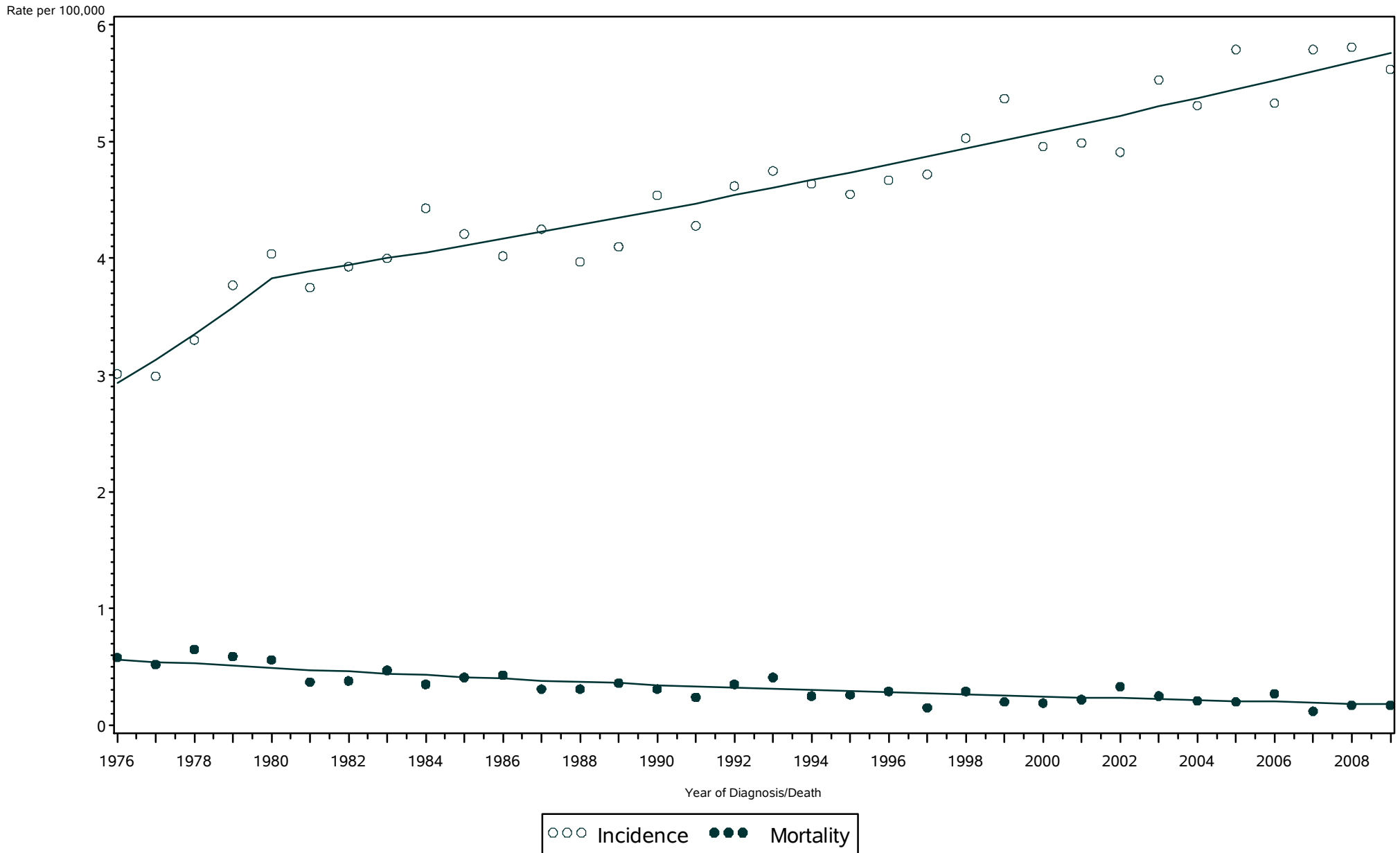
Prostate



Rates are age-adjusted to the 2000 US population standard.
Regression lines are calculated using the Joinpoint Regression Program Version 3.4.3, April 2010, National Cancer Institute (<http://srab.cancer.gov/joinpoint/>).
The data shown here are not identical to the data in the corresponding 2005-2009 incidence table. See the rationale in 'Considerations When Comparing Cancer Statistics Over Time.'

New York State Cancer Registry, NYSDOH
Age-Adjusted Cancer Incidence and Mortality Rates,
New York State, 1976-2009

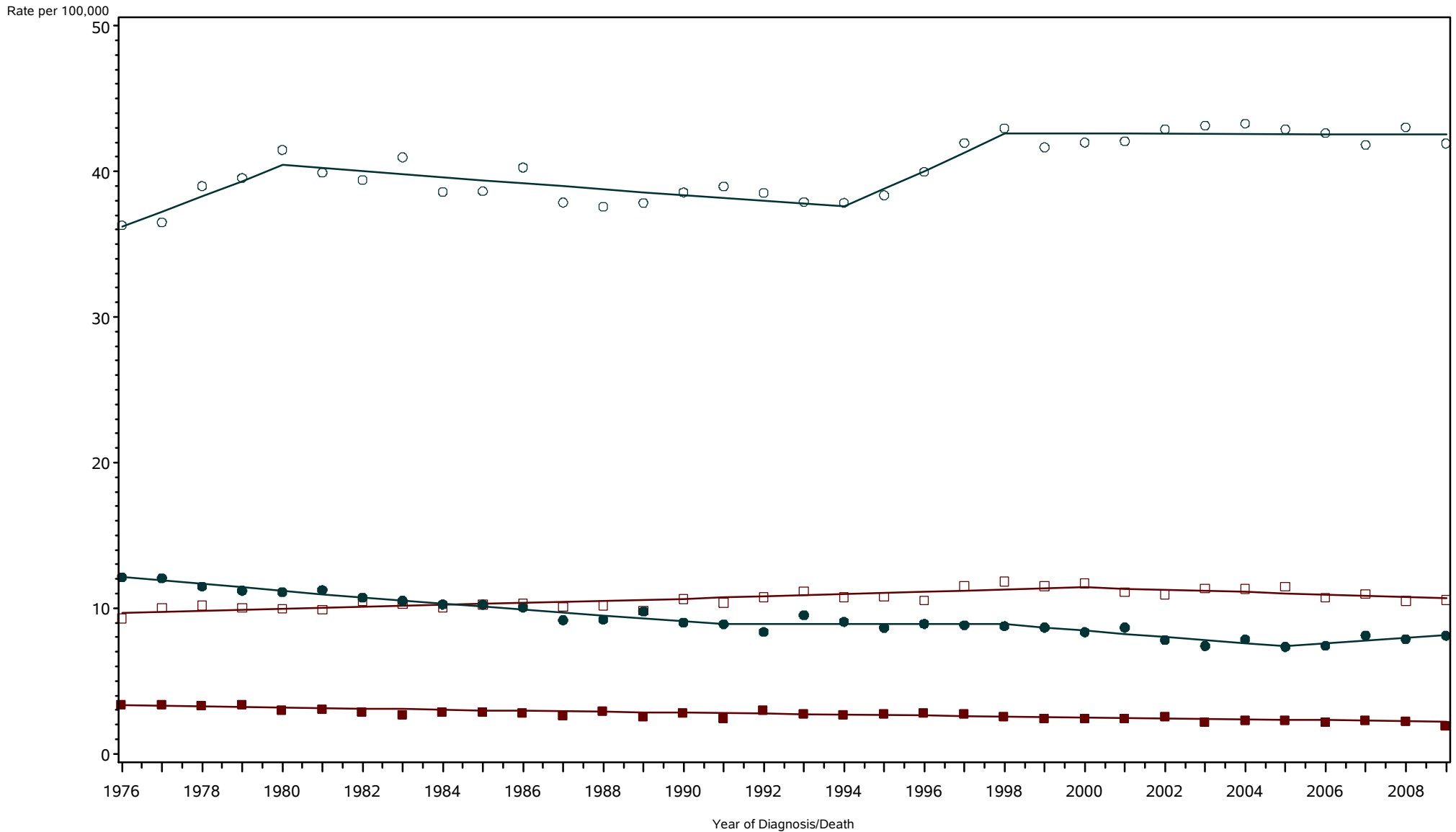
Testis



Rates are age-adjusted to the 2000 US population standard.
Regression lines are calculated using the Joinpoint Regression Program Version 3.4.3, April 2010, National Cancer Institute (<http://srab.cancer.gov/joinpoint/>).
The data shown here are not identical to the data in the corresponding 2005-2009 incidence table. See the rationale in 'Considerations When Comparing Cancer Statistics Over Time.'

New York State Cancer Registry, NYSDOH
 Age-Adjusted Cancer Incidence and Mortality Rates,
 New York State, 1976-2009

Urinary bladder (incl. in situ)

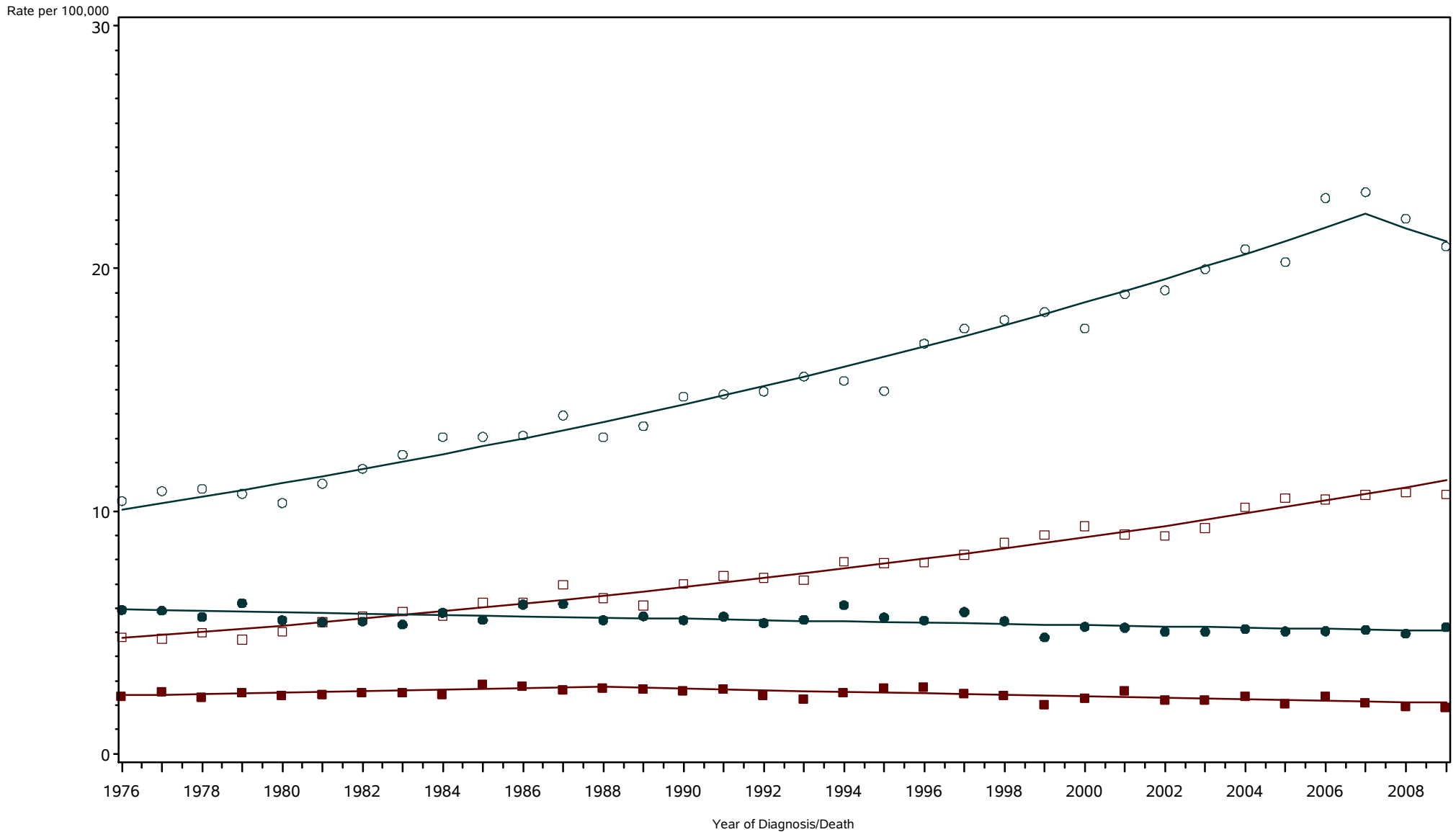


○ ○ ○ Incidence among Males □ □ □ Incidence among Females ● ● ● Mortality among Males ■ ■ ■ Mortality among Females

Rates are age-adjusted to the 2000 US population standard.
 Regression lines are calculated using the Joinpoint Regression Program Version 3.4.3, April 2010, National Cancer Institute (<http://srab.cancer.gov/joinpoint/>).
 The data shown here are not identical to the data in the corresponding 2005-2009 incidence table. See the rationale in 'Considerations When Comparing Cancer Statistics Over Time.'

New York State Cancer Registry, NYSDOH
Age-Adjusted Cancer Incidence and Mortality Rates,
New York State, 1976-2009

Kidney and renal pelvis

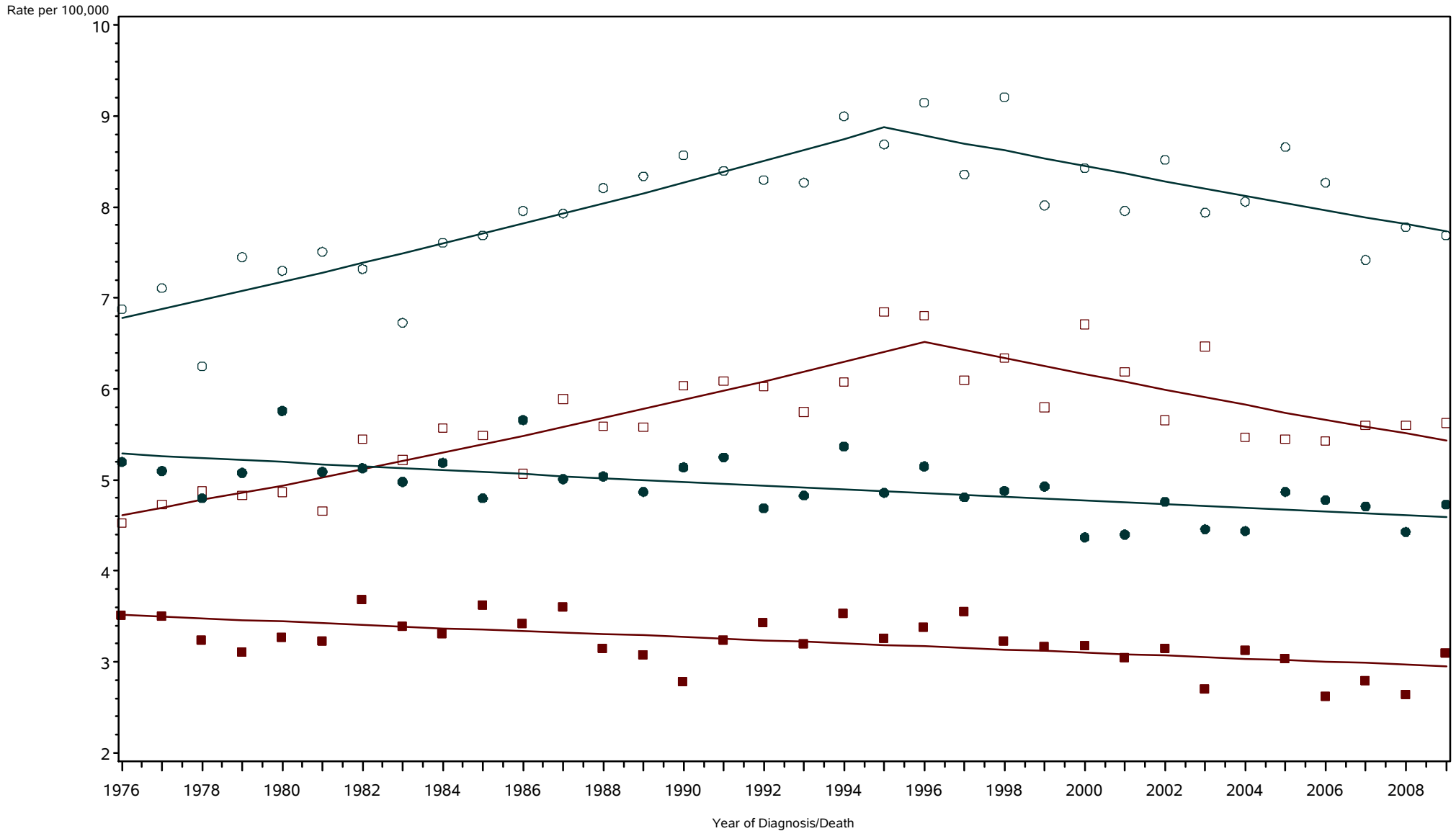


○ ○ ○ Incidence among Males □ □ □ Incidence among Females ● ● ● Mortality among Males ■ ■ ■ Mortality among Females

Rates are age-adjusted to the 2000 US population standard.
Regression lines are calculated using the Joinpoint Regression Program Version 3.4.3, April 2010, National Cancer Institute (<http://srab.cancer.gov/joinpoint/>).
The data shown here are not identical to the data in the corresponding 2005-2009 incidence table. See the rationale in 'Considerations When Comparing Cancer Statistics Over Time.'

New York State Cancer Registry, NYSDOH
 Age-Adjusted Cancer Incidence and Mortality Rates,
 New York State, 1976-2009

Brain and other nervous system

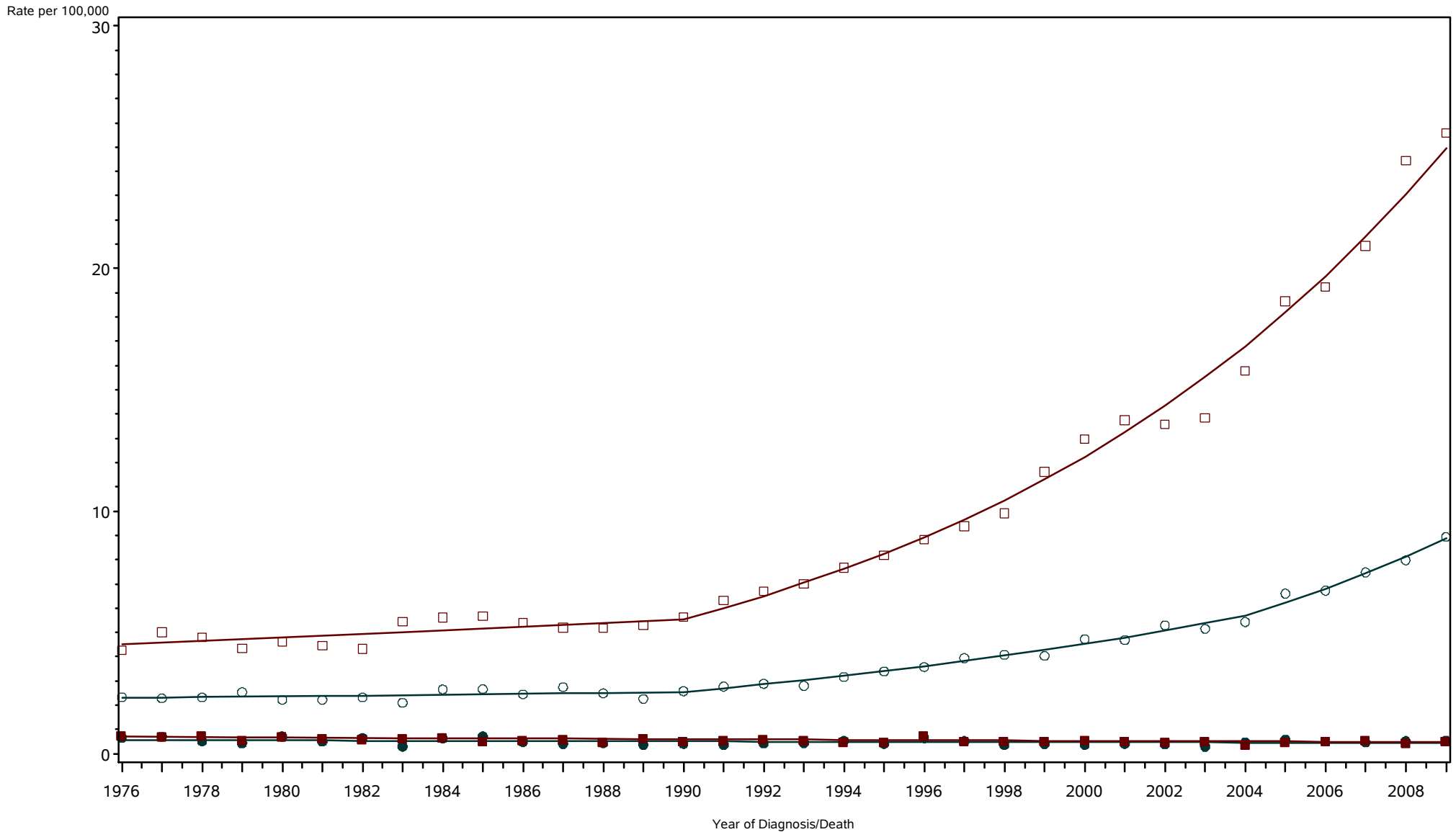


○ ○ ○ Incidence among Males □ □ □ Incidence among Females ● ● ● Mortality among Males ■ ■ ■ Mortality among Females

Rates are age-adjusted to the 2000 US population standard.
 Regression lines are calculated using the Joinpoint Regression Program Version 3.4.3, April 2010, National Cancer Institute (<http://srab.cancer.gov/joinpoint/>).
 The data shown here are not identical to the data in the corresponding 2005-2009 incidence table. See the rationale in 'Considerations When Comparing Cancer Statistics Over Time.'

New York State Cancer Registry, NYSDOH
Age-Adjusted Cancer Incidence and Mortality Rates,
New York State, 1976-2009

Thyroid

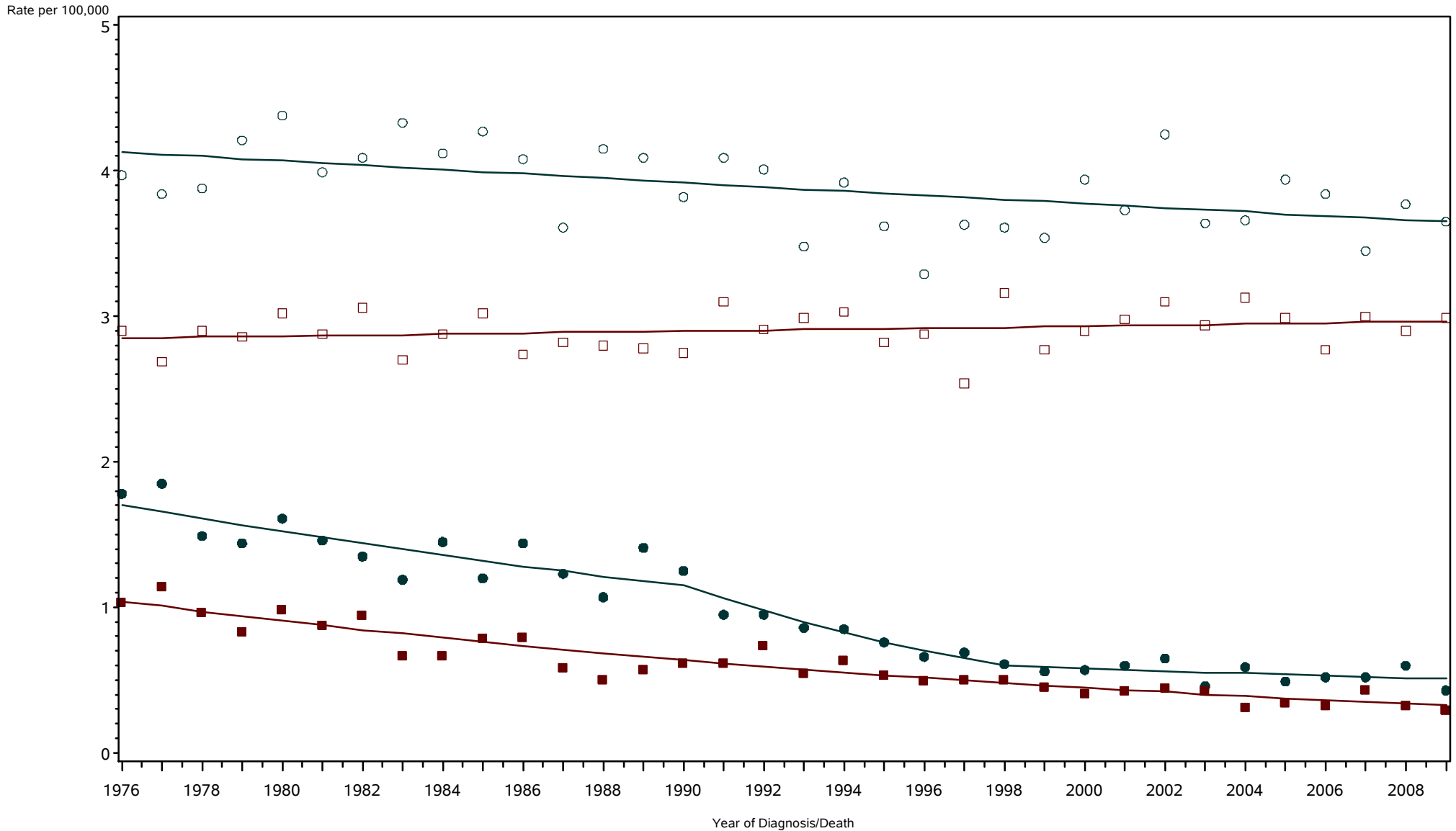


○ ○ ○ Incidence among Males □ □ □ Incidence among Females ● ● ● Mortality among Males ■ ■ ■ Mortality among Females

Rates are age-adjusted to the 2000 US population standard.
Regression lines are calculated using the Joinpoint Regression Program Version 3.4.3, April 2010, National Cancer Institute (<http://srab.cancer.gov/joinpoint/>).
The data shown here are not identical to the data in the corresponding 2005-2009 incidence table. See the rationale in 'Considerations When Comparing Cancer Statistics Over Time.'

New York State Cancer Registry, NYSDOH
Age-Adjusted Cancer Incidence and Mortality Rates,
New York State, 1976-2009

Hodgkin lymphoma

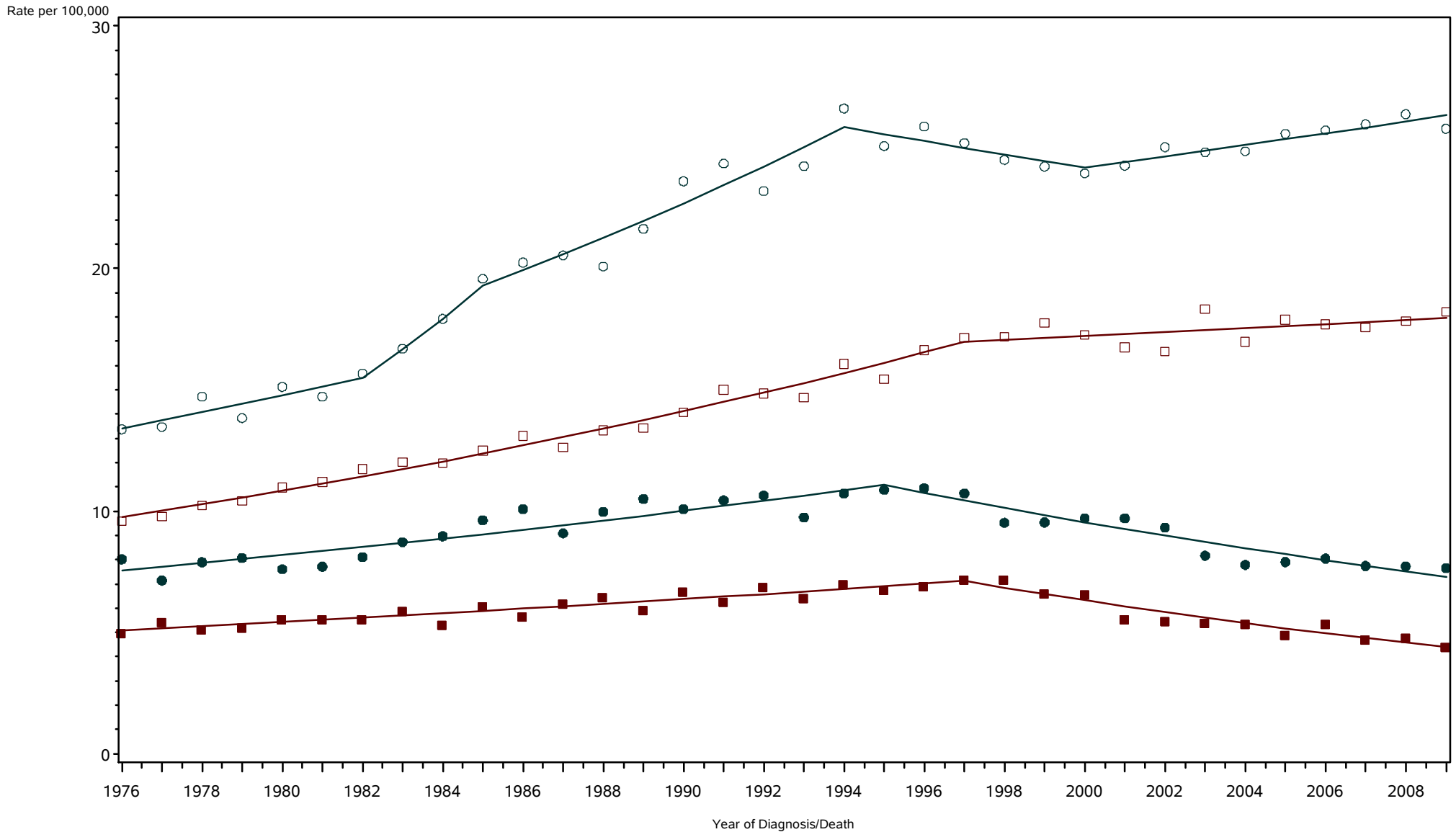


○ ○ ○ Incidence among Males □ □ □ Incidence among Females ● ● ● Mortality among Males ■ ■ ■ Mortality among Females

Rates are age-adjusted to the 2000 US population standard.
Regression lines are calculated using the Joinpoint Regression Program Version 3.4.3, April 2010, National Cancer Institute (<http://srab.cancer.gov/joinpoint/>).
The data shown here are not identical to the data in the corresponding 2005-2009 incidence table. See the rationale in 'Considerations When Comparing Cancer Statistics Over Time.'

New York State Cancer Registry, NYSDOH
 Age-Adjusted Cancer Incidence and Mortality Rates,
 New York State, 1976-2009

Non-Hodgkin lymphomas

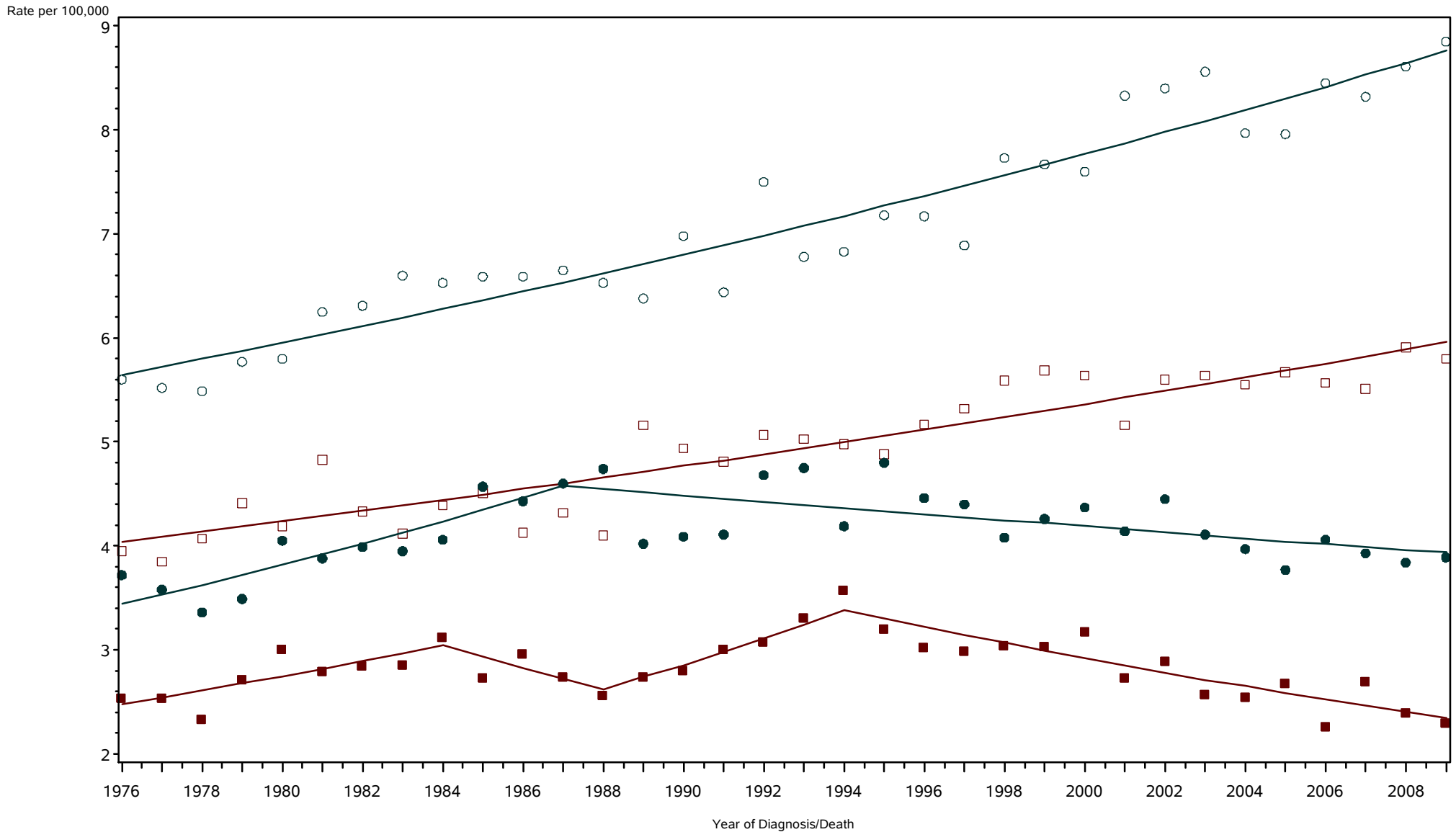


○ ○ ○ Incidence among Males □ □ □ Incidence among Females ● ● ● Mortality among Males ■ ■ ■ Mortality among Females

Rates are age-adjusted to the 2000 US population standard.
 Regression lines are calculated using the Joinpoint Regression Program Version 3.4.3, April 2010, National Cancer Institute (<http://srab.cancer.gov/joinpoint/>).
 The data shown here are not identical to the data in the corresponding 2005-2009 incidence table. See the rationale in 'Considerations When Comparing Cancer Statistics Over Time.'

New York State Cancer Registry, NYSDOH
Age-Adjusted Cancer Incidence and Mortality Rates,
New York State, 1976-2009

Myeloma

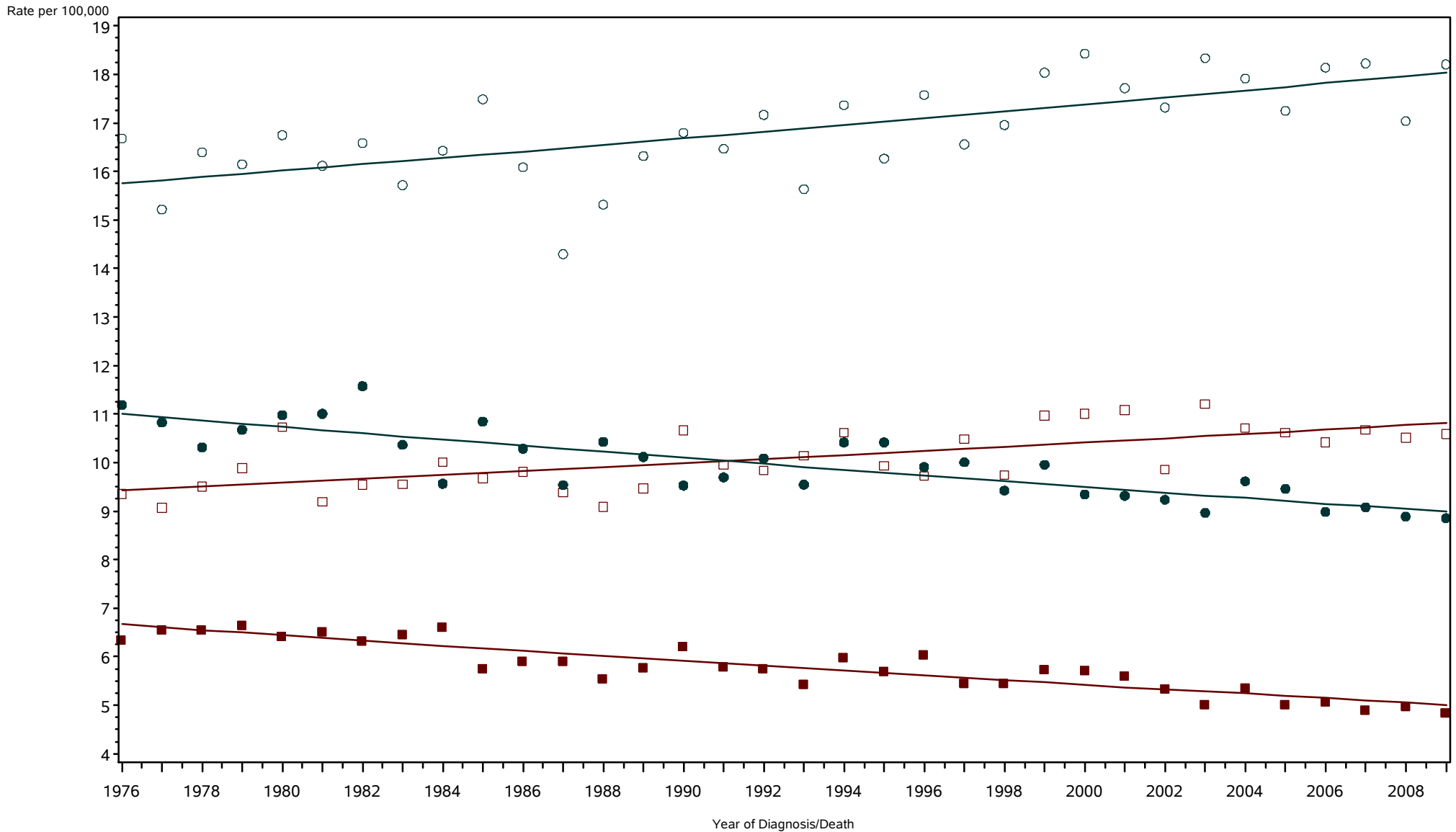


○ ○ ○ Incidence among Males □ □ □ Incidence among Females ● ● ● Mortality among Males ■ ■ ■ Mortality among Females

Rates are age-adjusted to the 2000 US population standard.
Regression lines are calculated using the Joinpoint Regression Program Version 3.4.3, April 2010, National Cancer Institute (<http://srab.cancer.gov/joinpoint/>).
The data shown here are not identical to the data in the corresponding 2005-2009 incidence table. See the rationale in 'Considerations When Comparing Cancer Statistics Over Time.'

New York State Cancer Registry, NYSDOH
 Age-Adjusted Cancer Incidence and Mortality Rates,
 New York State, 1976-2009

Leukemias



○ ○ ○ Incidence among Males □ □ □ Incidence among Females ● ● ● Mortality among Males ■ ■ ■ Mortality among Females

Rates are age-adjusted to the 2000 US population standard.
 Regression lines are calculated using the Joinpoint Regression Program Version 3.4.3, April 2010, National Cancer Institute (<http://srab.cancer.gov/joinpoint/>).
 The data shown here are not identical to the data in the corresponding 2005-2009 incidence table. See the rationale in 'Considerations When Comparing Cancer Statistics Over Time.'