

**BUREAU OF SEXUALLY
TRANSMITTED DISEASE CONTROL**

NEW YORK STATE DEPARTMENT OF HEALTH

STD STATISTICAL ABSTRACT

2006

STD STATISTICAL ABSTRACT 2006

Table of Contents

	<u>Page</u>
Summary of 2006 STD Morbidity	i
Figure 1: Primary and Secondary Syphilis – Reported Rates 1960-2006	1
Figure 2: Early Latent Syphilis – Reported Rates 1960-2006	1
Figure 3: Syphilis – Reported Cases by Stage: NYS exclusive of NYC 1992-2006	2
Figure 4: Primary and Secondary Syphilis – Reported Rates by Region: NYS exclusive of NYC 1992-2006	2
Figure 5: Primary and Secondary Syphilis Rates by County: New York State, 2006	3
Figure 6: Primary and Secondary Syphilis – Reported Rates by Sex: NYS exclusive of NYC 1992-2006	4
Figure 7: Primary and Secondary Syphilis – Reported Rates by Age: NYS exclusive of NYC 1992-2006	4
Figure 8.1: Primary and Secondary Syphilis – Age- and Sex-Specific Rates: NYS: exclusive of NYC 2006	5
Figure 8.2: Primary and Secondary Syphilis – Age- and Sex-Specific Rates: NYC 2006	5
Figure 9: Gonorrhea – Reported Rates 1960-2006	6
Figure 10: Gonorrhea – Reported Rates by Region: NYS exclusive of NYC 1992-2006	6
Figure 11: Gonorrhea Rates by County: New York State, 2006	7
Figure 12: Gonorrhea – Reported Rates by Sex: NYS exclusive of NYC 1992-2006	8
Figure 13: Gonorrhea – Reported Rates by Age: NYS exclusive of NYC 1992-2006	8
Figure 14.1: Gonorrhea – Age- and Sex-Specific Rates: NYS exclusive of NYC 2006	9
Figure 14.2: Gonorrhea – Age- and Sex-Specific Rates: NYC 2006	9
Figure 15: Chlamydia – Reported Rates 1960-2006	10
Figure 16: Chlamydia – Reported Rates by Region: NYS exclusive of NYC 1992-2006	10
Figure 17: Chlamydia Rates by County: New York State, 2006	11
Figure 18: Chlamydia – Reported Rates by Sex: NYS exclusive of NYC 1992-2006	12
Figure 19: Chlamydia – Reported Rates by Age: NYS exclusive of NYC 1992-2006	12

Figure 20.1: Chlamydia – Age- and Sex-Specific Rates: NYS exclusive of NYC 2006	13
Figure 20.2: Chlamydia – Age- and Sex-Specific Rates: NYC 2006	13
Table 1: Early syphilis: Reported cases and rates: United States, New York City and New York State exclusive of NYC, 1960-2006	14
Table 2: Syphilis - Reported cases and rates by stage and county: New York State, 2006	15
Table 3: Early Syphilis - Reported cases and rates by age and sex: New York State, 2006	18
Table 4: Unknown Latent and Late Latent Syphilis - Reported cases and rates by age and sex: New York State, 2006	19
Table 5.1: Early Syphilis - Men-Reported cases and rates by age and county: New York State, 2006	20
Table 5.2: Early Syphilis - Women-Reported cases and rates by age and county: New York State, 2006	22
Table 6: Gonorrhea - Reported cases and rates: United States, New York City and New York State exclusive of NYC, 1960-2006	23
Table 7: Gonorrhea - Reported cases and rates by region and county: New York State, 2006	24
Table 8: Gonorrhea - Reported cases and rates by age and sex: New York State, 2006	26
Table 9.1: Gonorrhea - Men-Reported cases and rates by age and county: New York State,2006	27
Table 9.2: Gonorrhea - Women-Reported cases and rates by age and county: New York State, 2006	29
Table 10: Chlamydia - Reported cases and rates: United States, New York City and New York State exclusive of NYC, 1960-2006	31
Table 11: Chlamydia - Reported cases and rates by region and county: New York State, 2006	32
Table 12: Chlamydia - Reported cases and rates by age and sex: New York State, 2006	34
Table 13.1: Chlamydia - Men-Reported cases and rates by age and county: New York State, 2006	35
Table 13.2: Chlamydia - Women-Reported cases and rates by age and county: New York State, 2006	37
Table 14: Chlamydia Screening by Age Group: 2001-2006	39
Table 15: Chlamydia Screening in Prevalence Monitoring Sites – 2006	40
Table 16: Chlamydia Screening in Sentinel Sites – 2006	41
Technical notes for the 2006 STD statistical abstract	42

STD STATISTICAL ABSTRACT 2006

Sexually transmitted diseases (STDs) continue to have a significant impact on the health, safety and welfare of citizens of New York State. As in prior years, STDs are overwhelmingly the leading category of reported communicable diseases in the State. The 90,777 cases reported in 2006 comprise 72 percent of all communicable diseases reported statewide (including New York City). This document summarizes 2006 statewide data on trends in notifiable STDs: syphilis, gonorrhea and Chlamydia. These data, which are useful for examining overall trends and trends among specific populations at risk, represent only a proportion of the true burden of STDs in the state. Many cases of notifiable STDs go undiagnosed, and some highly prevalent viral STDs, such as human papilloma virus and genital herpes, are not reported at all.

Syphilis

In 2006, a total of 1,731 cases of primary, secondary and early latent syphilis cases were reported, a 3 percent decrease over 2005 (Table 1). Compared to 2005, cases of primary and secondary (P&S) syphilis decreased 6 percent compared to 2005 in New York City (NYC) (2006: 578; 2005:616) but increased 77 percent in the rest of the state (2006: 158; 2005:89). Decreases in reported cases of early latent syphilis occurred in both regions with an 8 percent decrease in NYC (2006: 901; 2005: 980) and a 10 percent decrease in the rest of the state (2006: 94; 2005: 104). In 2006, 24 cases of congenital syphilis were reported statewide, double the number reported in 2005. Of these 24 cases, 14 were reported in NYC and 10 were reported in the rest of the state.

The majority of cases of P&S syphilis continued to occur among males with 707 cases reported in 2006 accounting for 96 percent of total cases (Table 3). Based on available data, men who have sex with men (MSM) was the primary risk factor. The rate of P&S was highest among males in the 25-29 and 35-39 year age groups (20.2 per 100,000 for both) (Table 3). Among women, age-specific rates of P&S were highest among the 25-29 year age group (1.1 per 100,000).

The National Healthy People 2010 target for P&S syphilis rates is 0.2 cases per 100,000 population. Four of the five NYC boroughs and 29 of the 57 Upstate New York counties exceeded this target for 2006 (Figure 5). The counties with the highest rates of P&S syphilis were New York (15.6), Kings (6.4), Bronx (7.6), Queens (3.5), and Clinton (3.8),(Table 2, Figure 5).

Gonorrhea

Gonorrhea is the second most commonly-reported STD in New York State. In 2006, 17,459 cases of gonorrhea were reported statewide, 10,299 in NYC and 7,160 in the rest of the state. Nationally, data indicate a small increase in cases of gonorrhea (5.5 percent) in 2006 compared to 2005 while statewide data show a 2.5 percent decline in gonorrhea cases over the same time period. By region, NYC cases dropped 2.8 percent in 2006 compared to 2005 and 2.1 percent in Upstate NY for the same period (Table 6).

In 2006, case rates of gonorrhea were 128.6 per 100,000 population in NYC and 65.3 per 100,000 population in Upstate NY (Table 6). Overall, rates of gonorrhea by sex were similar with 98.3 cases per 100,000 males and 86.1 cases per 100,000 females (Table 8). The burden of gonococcal infections was highest among adolescent and young adults. Statewide, age-specific rates by sex were highest among 20-24 year old males (393.4 per 100,000) and 15-19 year old females (453.4 per 100,000) (Table 8). The same distribution was seen in New York City while in Upstate NY, age-specific rates were highest in the 20-24 year age group for males and females (278.1 per 100,000 and 393.7 per 100,000, respectively).

While gonorrhea case rates have declined over time, rates continued to exceed the National Healthy People 2010 objective of 19 cases per 100,000 in each region of the State (see Figures 9-10). Rates in the Buffalo region of NYS, an eight-county area, and the Syracuse region, a 14-county area, both experienced an increase in gonorrhea rates in 2006 compared to 2005 (Buffalo region: 138.5 per 100,000 vs 129.7 per 100,000; Syracuse region: 57.8 per 100,000 vs. 46.4 per 100,000, respectively), (Table 7, 2006 data only). Statewide, the counties with the highest gonorrhea case rates were Erie (188.5), Monroe (185.9), Bronx (160.2), Kings (157.0) and New York (156.5), (Table 7). In each of these counties, and in Schenectady (129.0) and Niagara counties (126.0), the rate exceeded the 2006 U.S. case rate of 120.9 per 100,000 population (Figure 11).

Chlamydia

In 2006, 68,725 cases of Chlamydia were reported in New York State, making it the most commonly-reported communicable disease. Chlamydia morbidity has continued to increase since reporting was mandated in August 2000 (Figure 15). 2006 figures represent a statewide increase of 6.5 percent over 2005 with a 5 percent increase in NYC (2006: 41,236; 2005:39,215) and 8.6 percent increase in Upstate NY (2006:27,489; 2005: 25,313), (Table 10). It should be noted that nationally, the number of reported cases exceeded 1 million in 2006 (Table 10).

Women are disproportionately affected by Chlamydia (Figure 18). The Chlamydia case rate per 100,000 population for females in 2006 was more than twice the rate for males (493.5 vs. 220.6), (Table 12). Young women bear the burden of infections. In NYC, females aged 15-19 had the highest Chlamydia rates in 2006 (3,744.3 per 100,000) and in Upstate NY, those 20-24 had the highest rates (2,306.9 per 100,000). As with gonorrhea, males aged 20-24 had the highest rates regardless of region (NYC: 1,508.1 per 100,000; Upstate: 786.6 per 100,000), (Figure 20.1 & 20.2).

The national rate of Chlamydia in 2006 was 347.8 cases per 100,000 population. In NYS, eight counties exceeded this national rate (Table 11 & Figure 17). In NYC, boroughs with the highest rates per 100,000 were: Bronx (787.5), Kings (564.5), New York, (520.2), and Queens (359.7). In Upstate NY, the highest ranking counties were Onondaga (509.9), Monroe (492.8), Erie (441.9), Jefferson (365.1), and Niagara (360.7).

Chlamydia Prevalence

In 1994, the Centers for Disease Control and Prevention established the National Infertility Prevention Project (NIPP) to support screening for *Chlamydia trachomatis* infections among women. Infections with *Chlamydia trachomatis* are easily treated and cured, however, 70 percent of infections among women and 50 percent of infections among men are asymptomatic. Consequently, screening for Chlamydia is essential to detecting untreated infections and preventing serious sequelae which includes pregnancy loss and infertility. The Bureau of STD Control uses IPP funds to support Chlamydia screening in selected clinics including STD, Family Planning, and Adolescent clinics, jail/juvenile detention facilities, and college and community health centers. Federal age-based screening criteria are used to target Chlamydia screening. In family planning clinics, all women ≤ 24 years of age are screened at initial or annual visit, and in STD clinics, all women ≤ 29 years of age are screened. The Bureau of STD Control also uses state funds to conduct sentinel surveillance for Chlamydia in selected clinics in those counties with the highest morbidity. In these sentinel sites, all patients are screened for Chlamydia regardless of age or sex.

In 2006, over 100,000 individuals were screened for Chlamydia in prevalence sites. The majority of screening was among women with 103,939 females screened. Of those women who were tested, 3.7 percent were positive for Chlamydia. A total of 9,657 males were screened with 9.7 percent testing positive. By clinic type, the highest rates of infection were seen in adolescent health centers (12.9 percent positive) with 11.7 percent of female STD patients and 17.7 percent of male STD patients testing positive (Table 15). By age group, adolescents were disproportionately affected. Positivity was highest among males 10-14 years of age (18.2 percent) and among females in the 10-14 and 15-19 age groups (6.0 percent and 5.6 percent, respectively), although these results should be interpreted with caution given the small number of tests in the youngest age group.

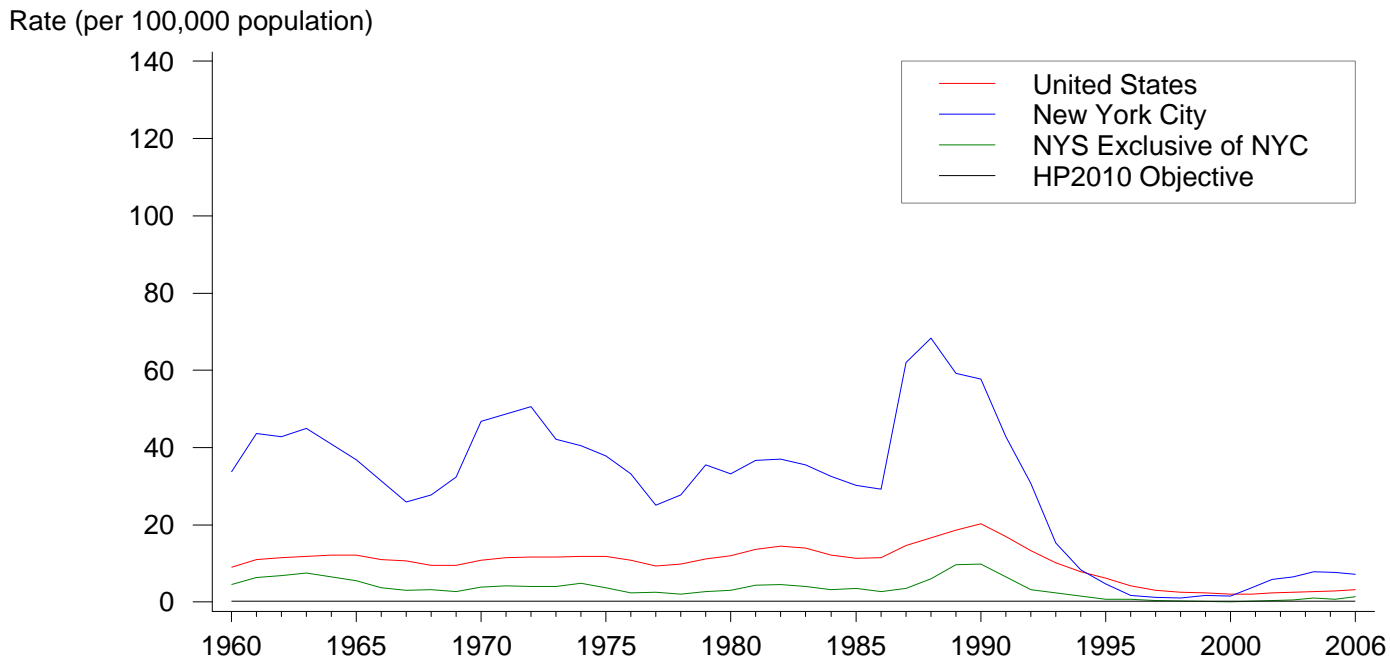
Chlamydia screening in sentinel sites was targeted at clients of STD clinics, and jails and juvenile detention centers in selected counties. Over 30,000 individuals were screened with males accounting for 70 percent of tests (Table 16). In STD clinics, the highest positivity was seen among males in the 15-19 year old age group (22.6 percent) and among females 10-14 and 15-19 years of age (18.9 percent and 18.2 percent, respectively). Please note these results should be interpreted with caution given the small number of tests in the youngest age group. In correctional settings, the highest positivity was seen in males 15-19 years of age (7.0 percent) and females 10-14 years of age (15.4 percent).

Historical data on the results of Chlamydia screening is presented in Table 14 and is similar to 2006; adolescents and young adults bear the highest burden of infections.

Reporting of suspected or confirmed cases of communicable diseases is required under the New York State Public Health Law and Sanitary Code (PHL 2102, NYCRR 2.10, 2.12). These requirements apply to health care providers and laboratories. Assistance with reporting cases of communicable disease is available in New York State by calling the NYSDOH Bureau of STD Control at (518) 474-3598 or in New York City by calling the NYC DOHMH Bureau of STD Control at (212) 788-4443.

National surveillance data for Chlamydia, gonorrhea and syphilis are presented in the CDC's report *Sexually Transmitted Disease Surveillance 2006* available at www.cdc.gov/std/stats. New York City Department of Health and Mental Hygiene, Bureau of STD Control also issues an annual report of 2006 surveillance data available at nyc.gov/std.

Figure 1. Primary and Secondary Syphilis -- Reported Rates: 1960-2006, and the Healthy People 2010 (HP2010) Objective



Note: The HP2010 Objective for primary and secondary syphilis is 0.2 case per 100,000 population.

Figure 2. Early Latent Syphilis -- Reported Rates: 1960-2006

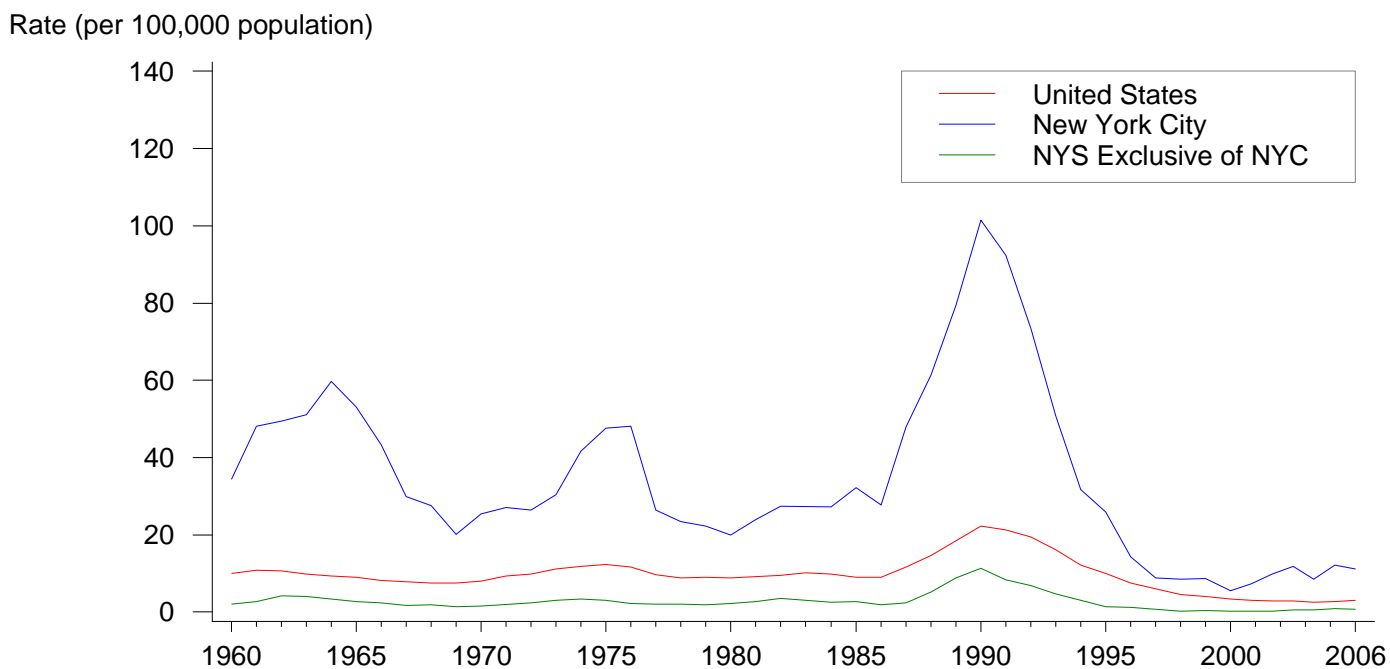


Figure 3. Syphilis -- Reported Cases by Stage: NYS Exclusive of NYC, 1992-2006

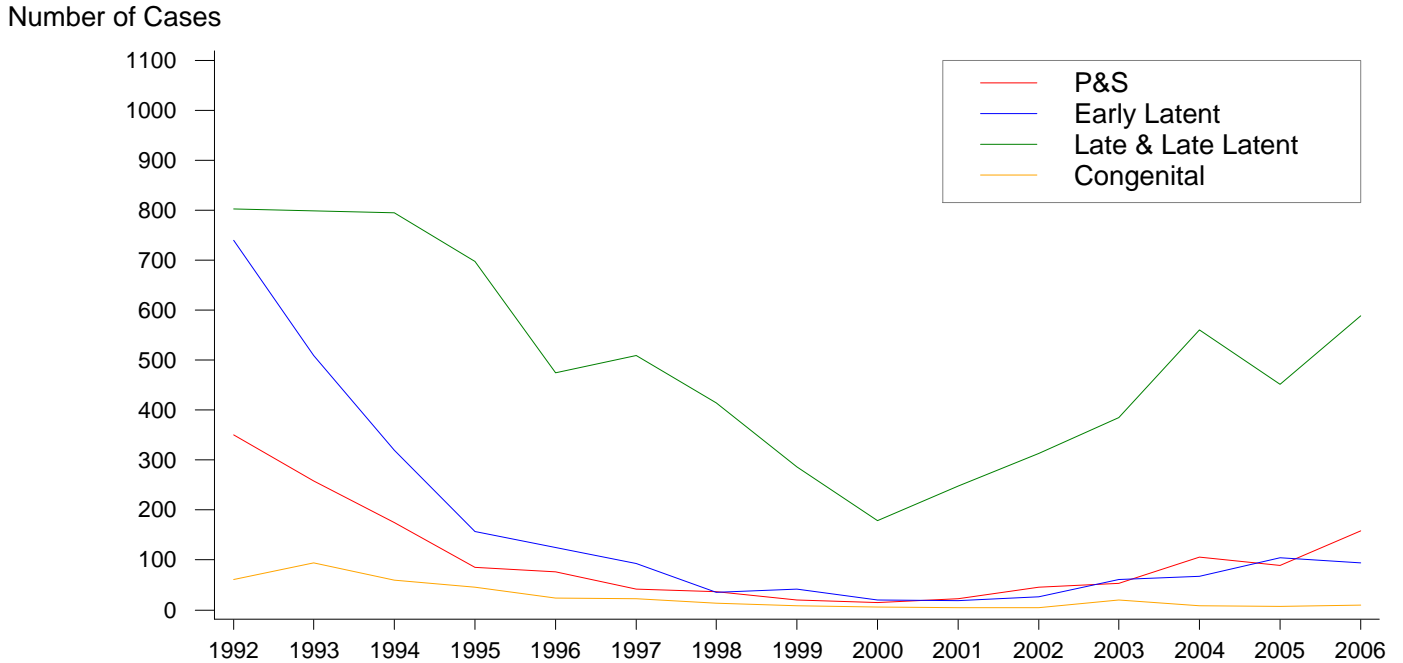
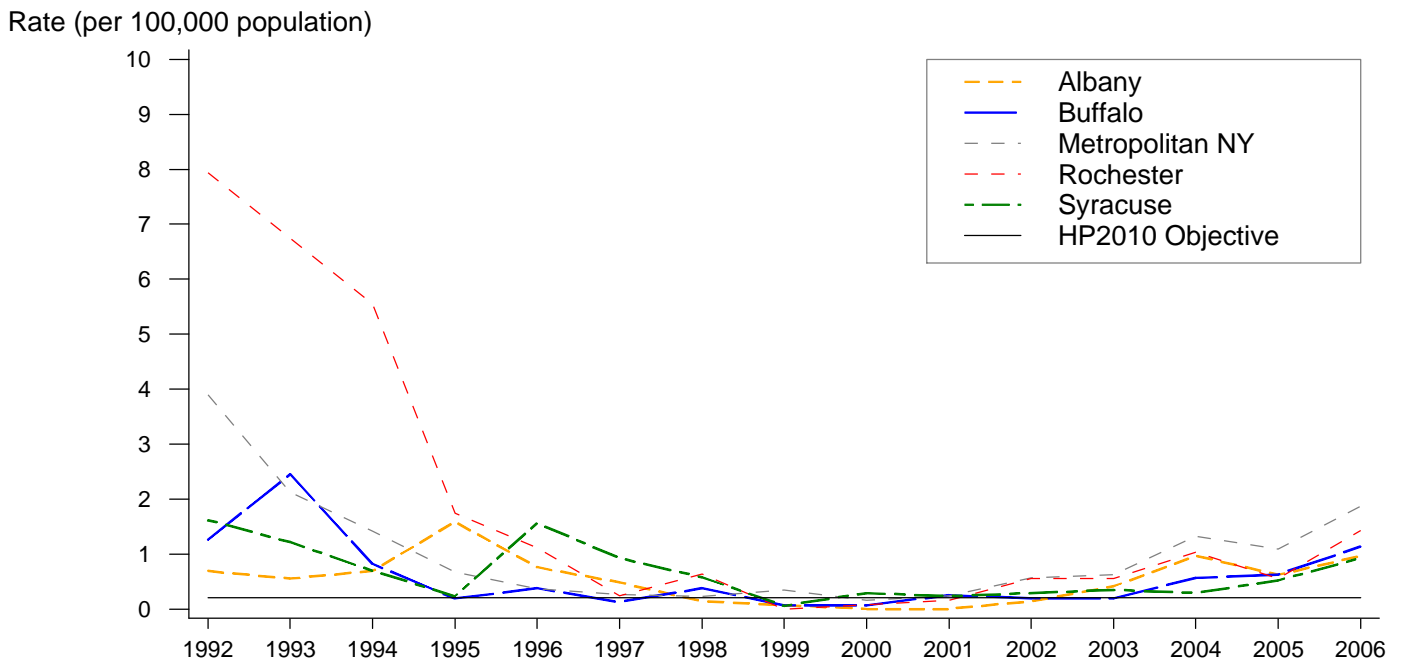


Figure 4. Primary and Secondary Syphilis -- Reported Rates by Region: NYS Exclusive of NYC, 1992-2006 and the Healthy People 2010 (HP2010) Objective



Note: The HP2010 Objective for primary and secondary syphilis is 0.2 case per 100,000 population.

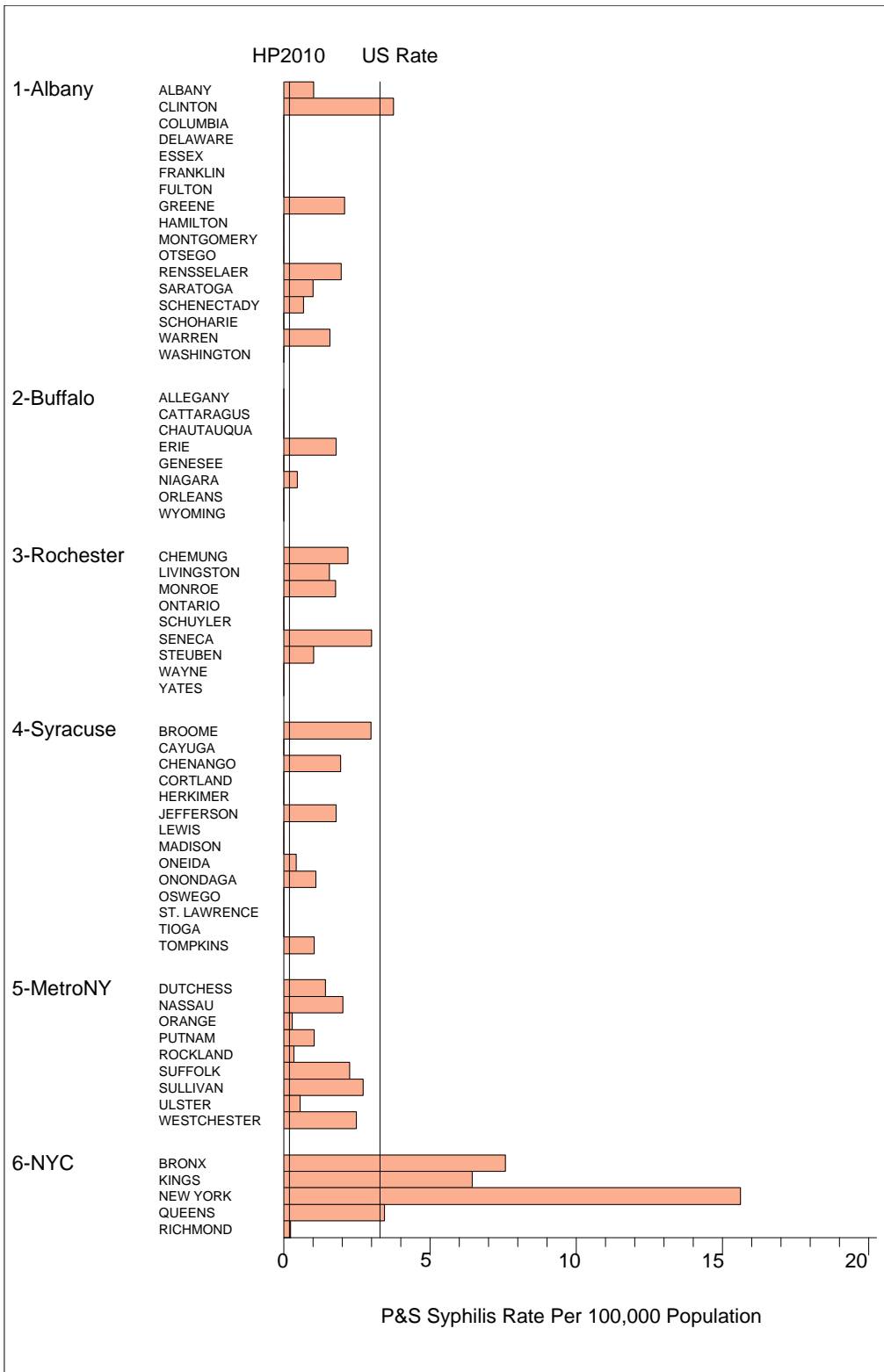
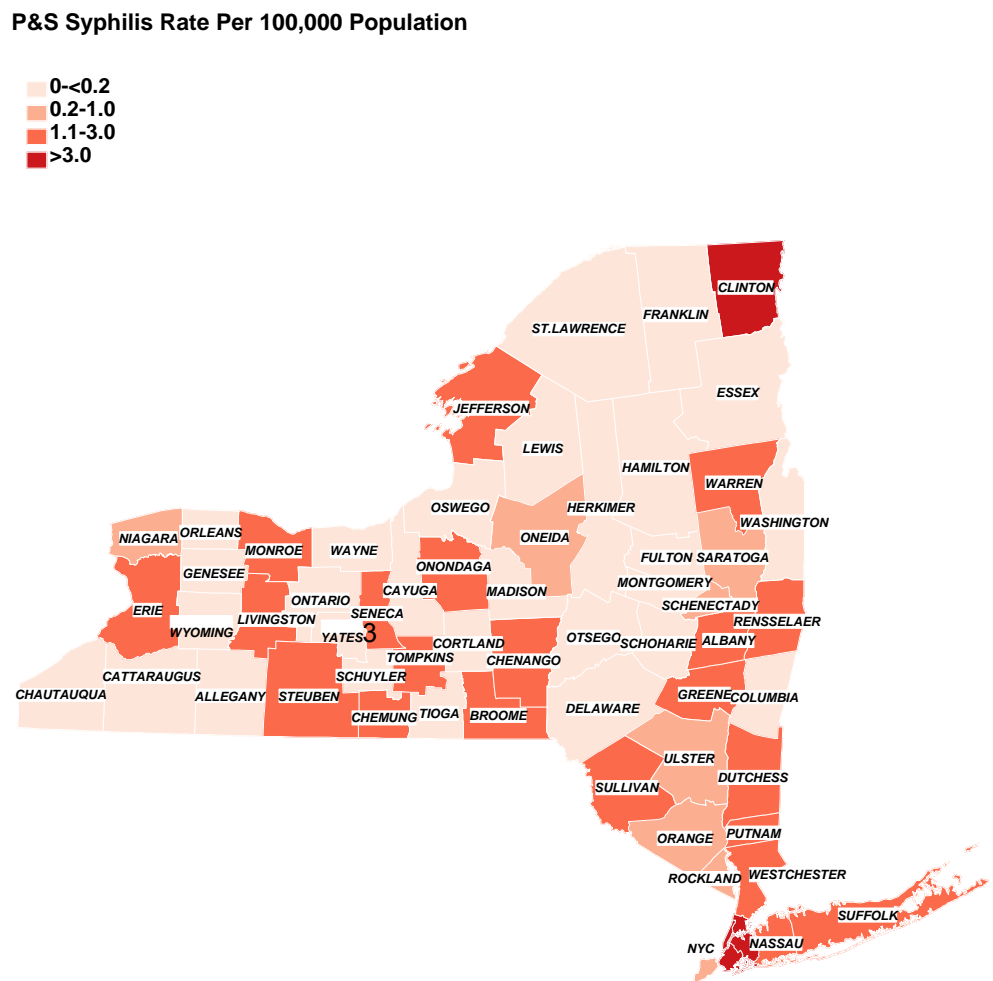


Figure 5. Primary and Secondary Syphilis Rates by County: New York State, 2006



Note: The HP2010 Objective for primary and secondary syphilis is 0.2 case per 100,000 population. The 2006 US national rate for primary and secondary syphilis is 3.3 cases per 100,000 population. 3

Figure 6. Primary and Secondary Syphilis -- Reported Rates by Sex: NYS Exclusive of NYC, 1992-2006 and the Healthy People 2010 (HP2010) Objective

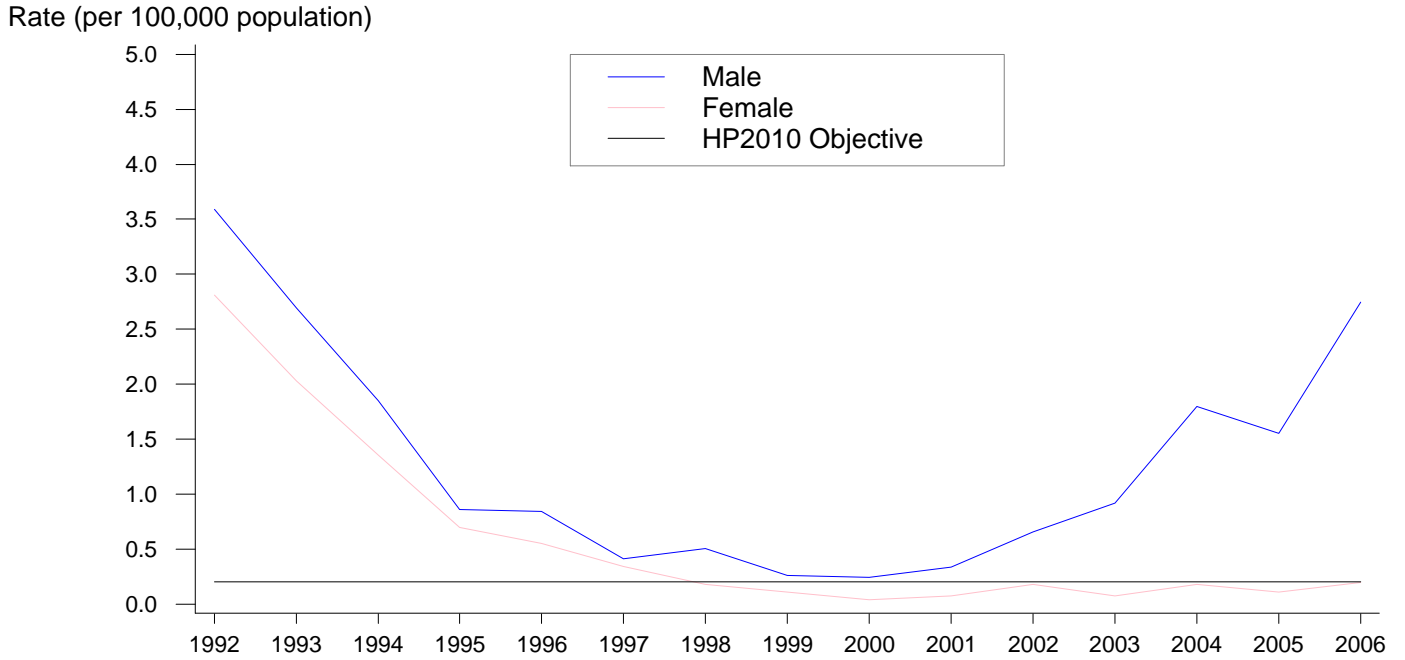
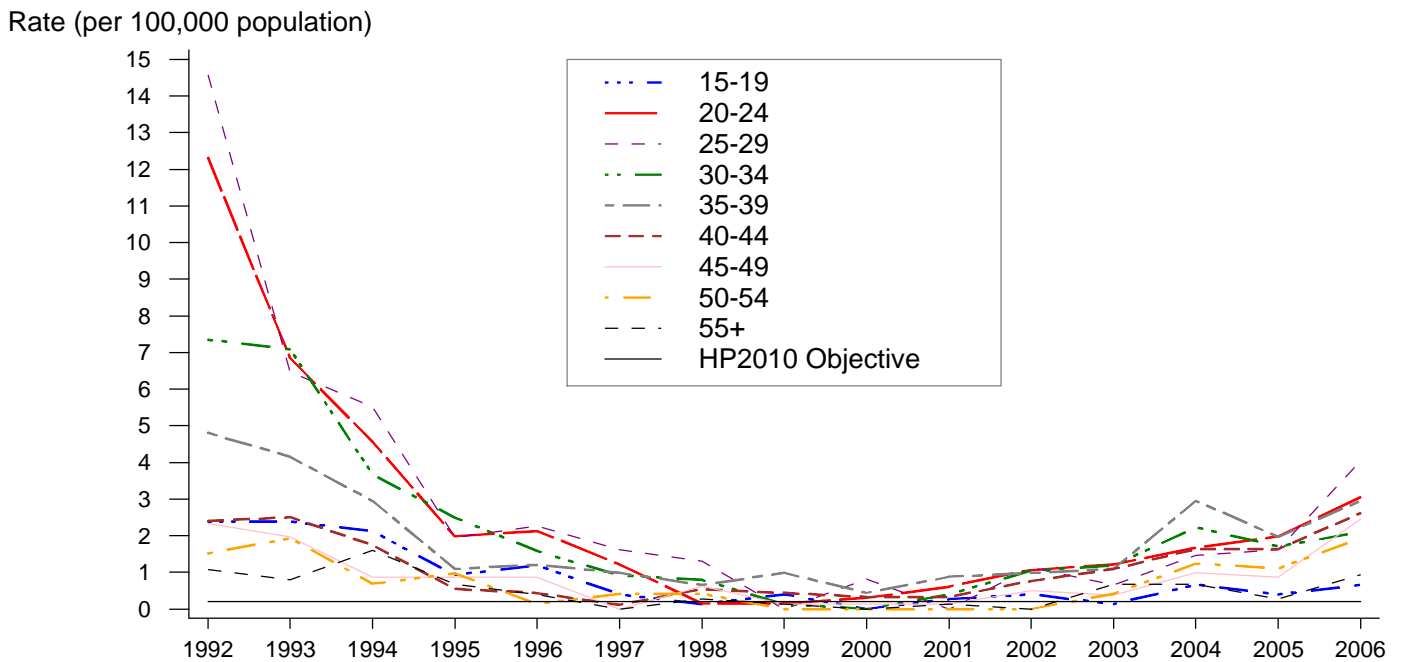


Figure 7. Primary and Secondary Syphilis -- Reported Rates by Age: NYS Exclusive of NYC, 1992-2006 and the Healthy People 2010 (HP2010) Objective



Note: The HP2010 Objective for primary and secondary syphilis is 0.2 case per 100,000 population.

Figure 8.1 Primary and Secondary Syphilis -- Age- and Sex-Specific Rates: NYS Exclusive of NYC, 2006

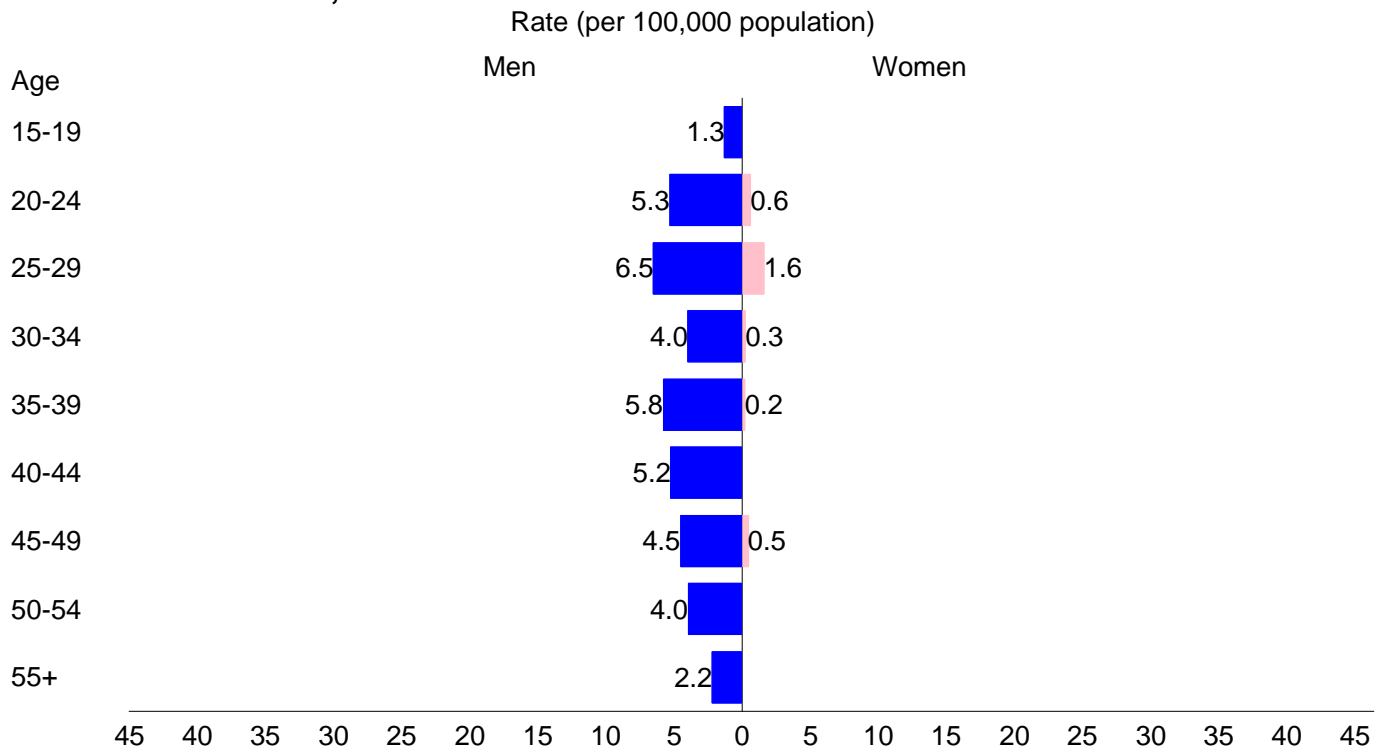
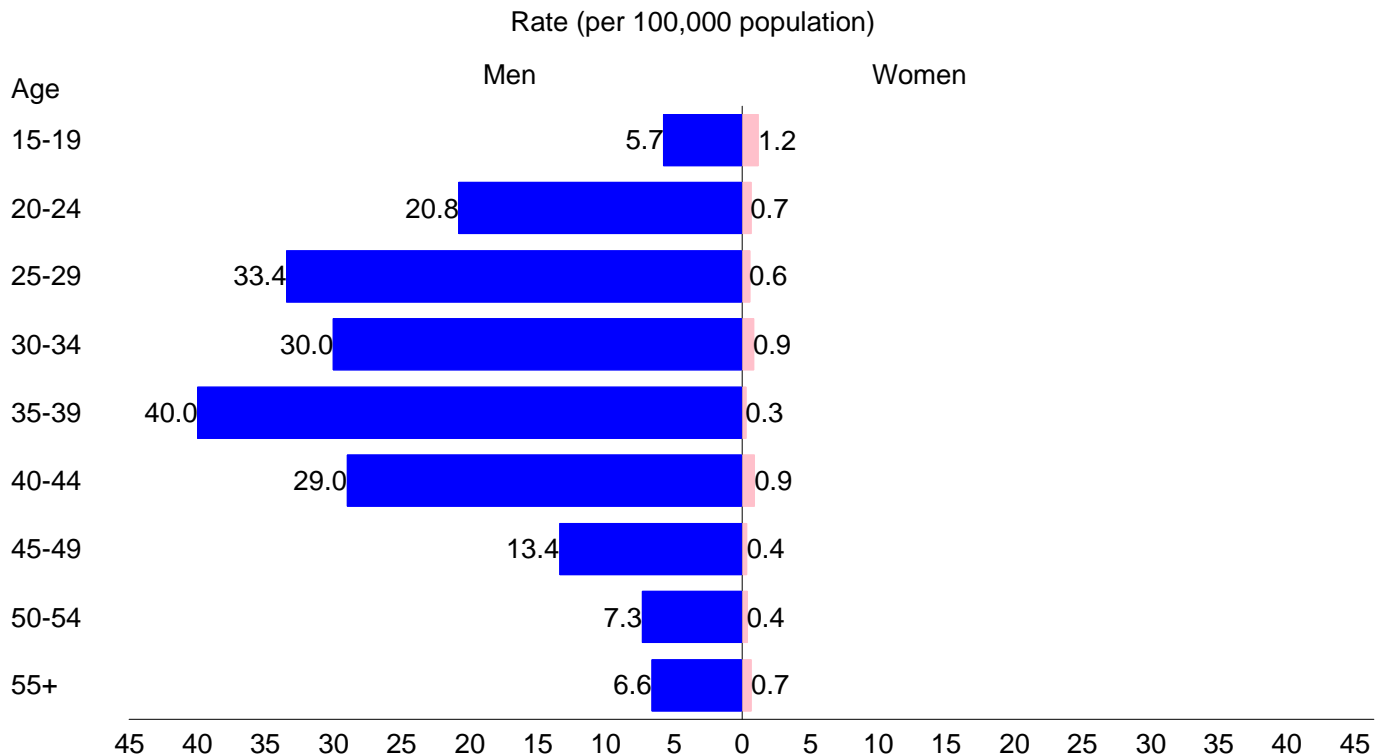


Figure 8.2 Primary and Secondary Syphilis -- Age- and Sex-Specific Rates: NYC, 2006



Note: The HP2010 Objective for primary and secondary syphilis is 0.2 case per 100,000 population.

Figure 9. Gonorrhea -- Reported Rates: 1960-2006, and the Healthy People 2010 (HP2010) Objective

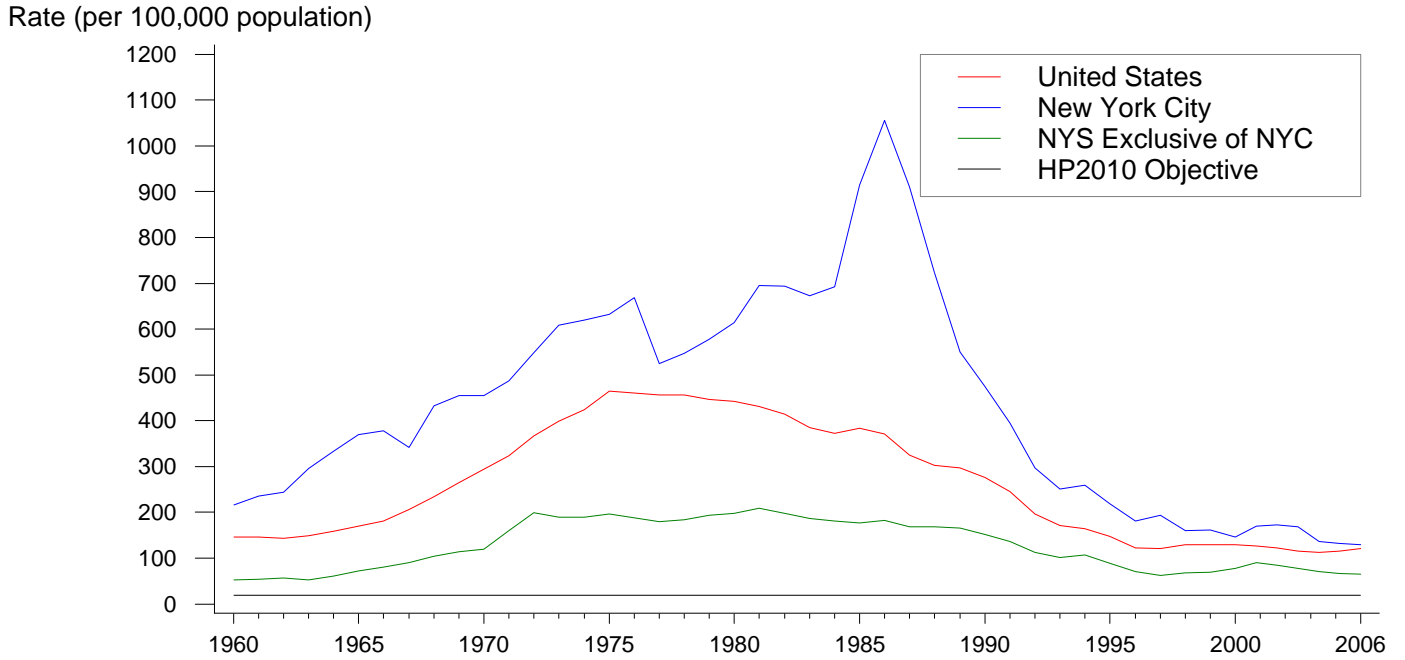
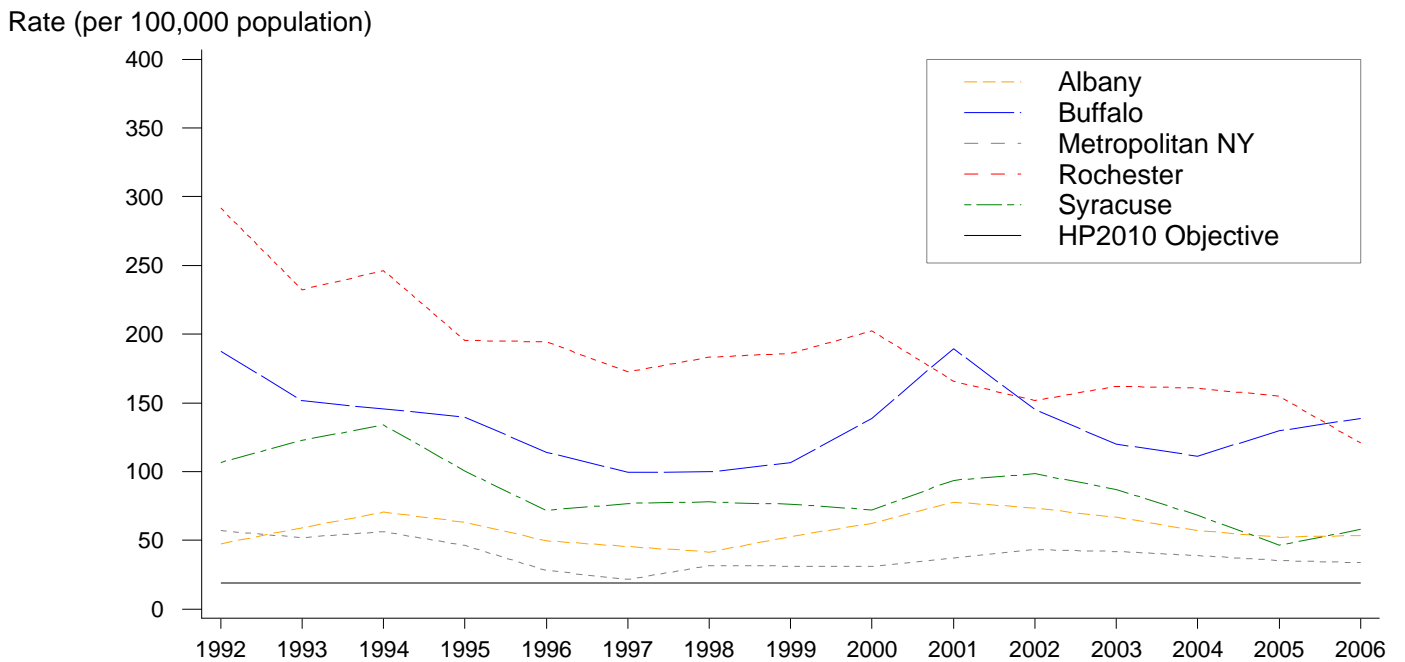


Figure 10. Gonorrhea -- Reported Rates by Region: NYS Exclusive of NYC, 1992-2006 and the Healthy People 2010 (HP2010) Objective



Note: The HP2010 Objective for gonorrhea is 19 case per 100,000 population.

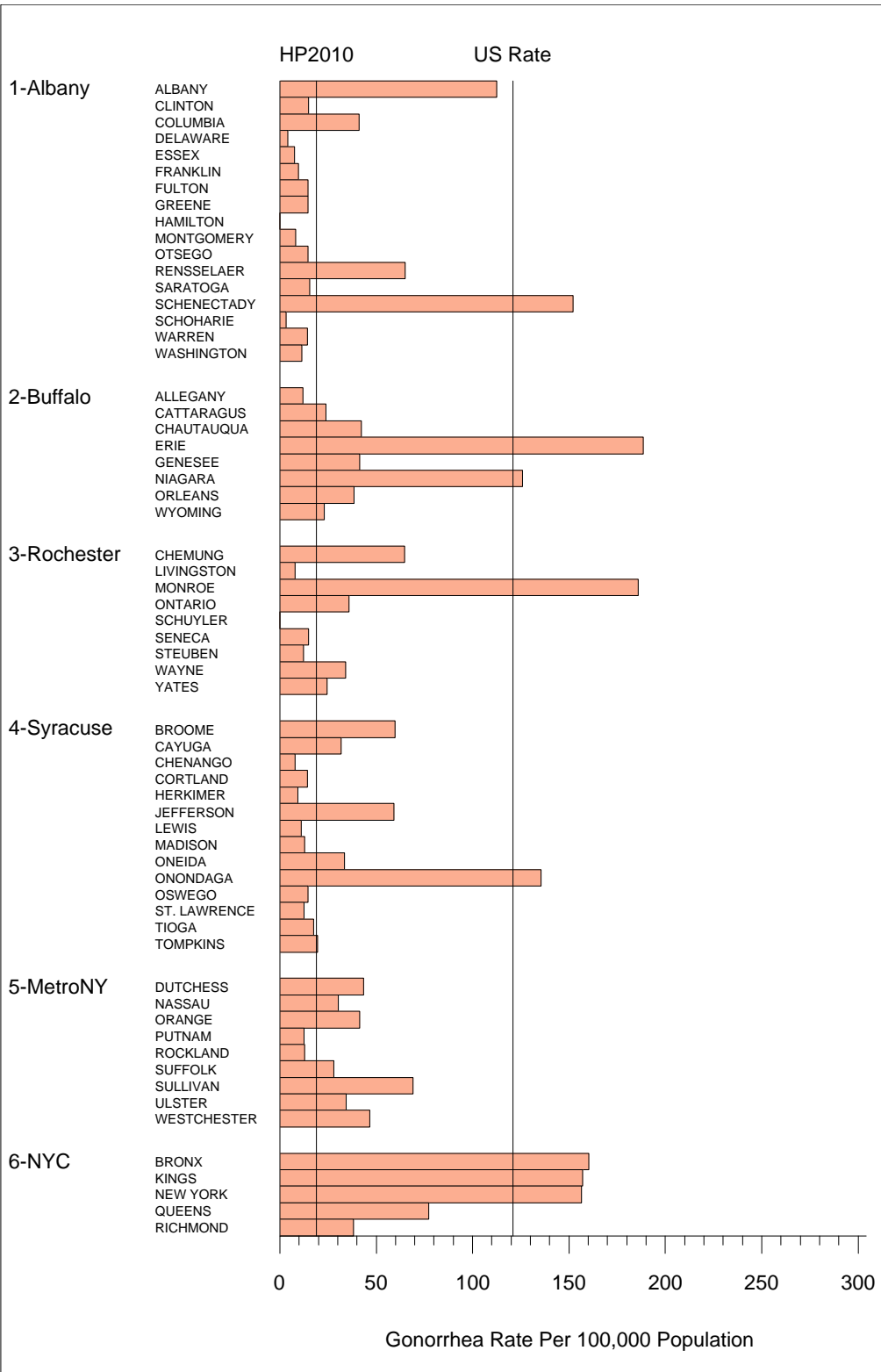
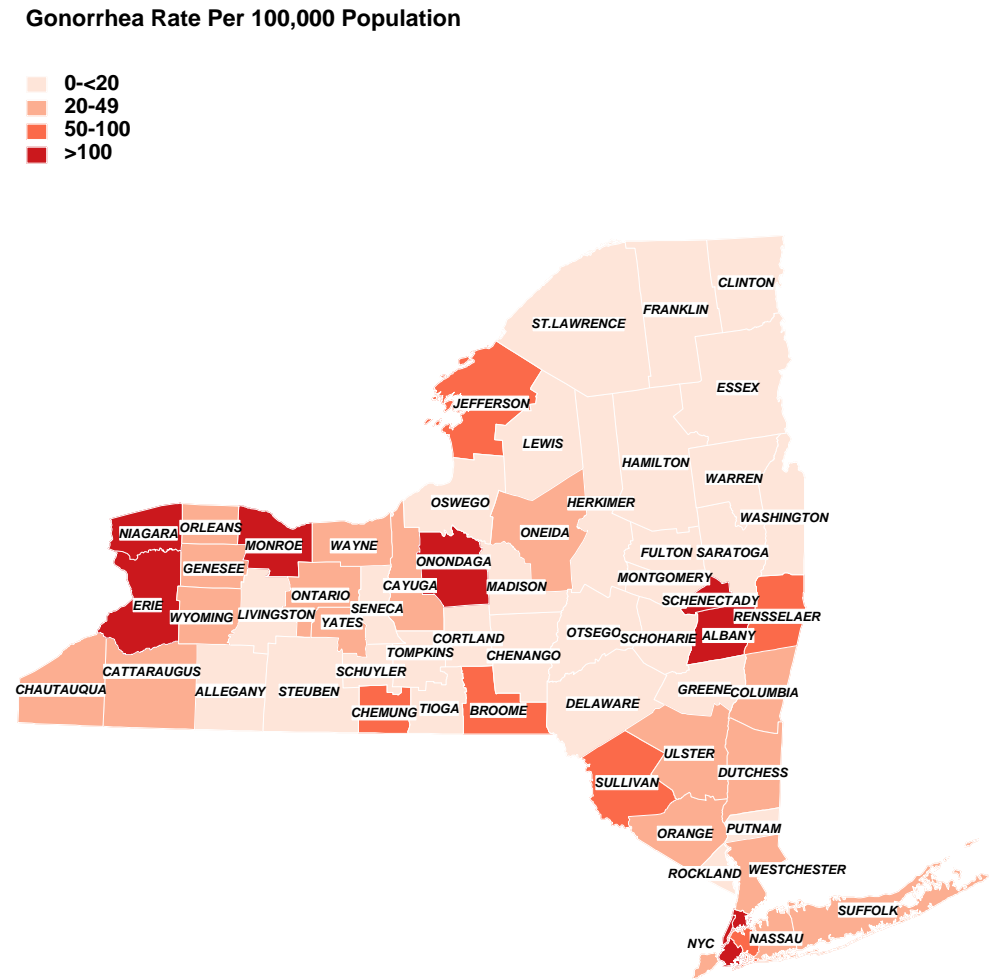


Figure 11. Gonorrhea Rates by County: New York State, 2006



Note: The HP2010 Objective for gonorrhea is 19 case per 100,000 population.
The 2006 US national rate for gonorrhea is 120.9 cases per 100,000 population.

Figure 12. Gonorrhea -- Reported Rates by Sex: NYS Exclusive of NYC, 1992-2006 and the Healthy People 2010 (HP2010) Objective

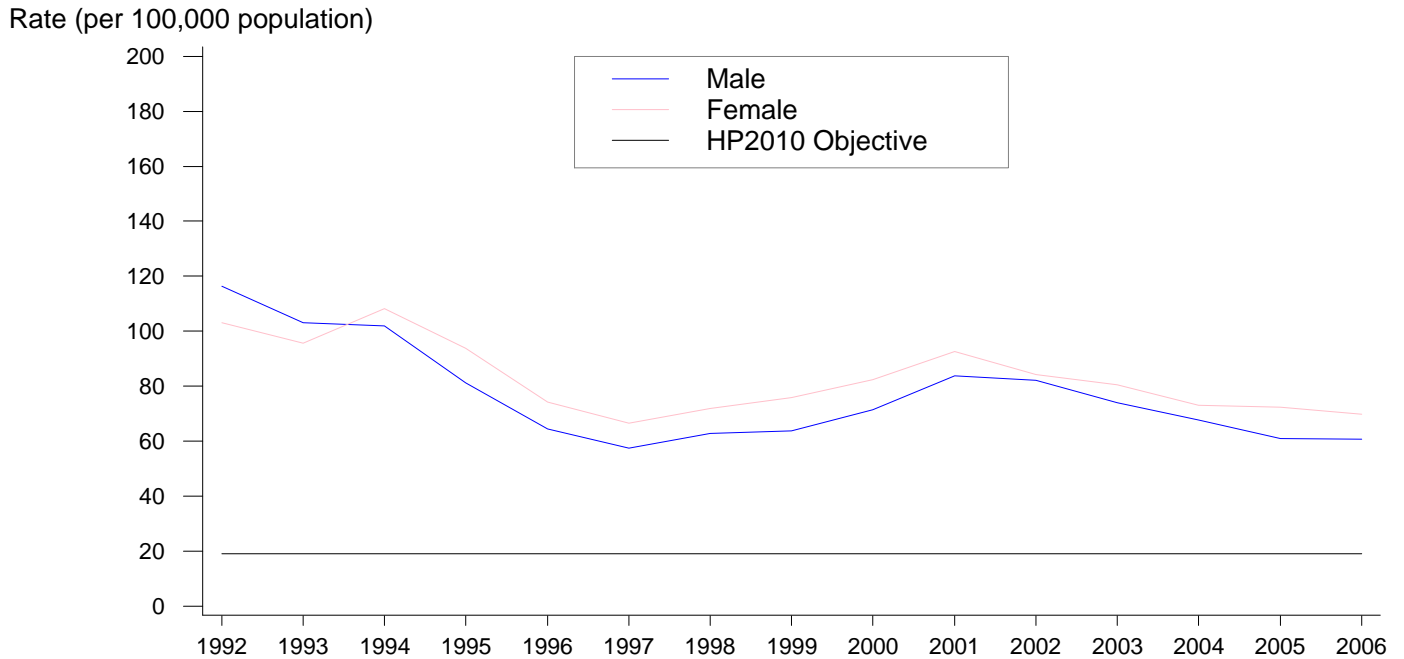
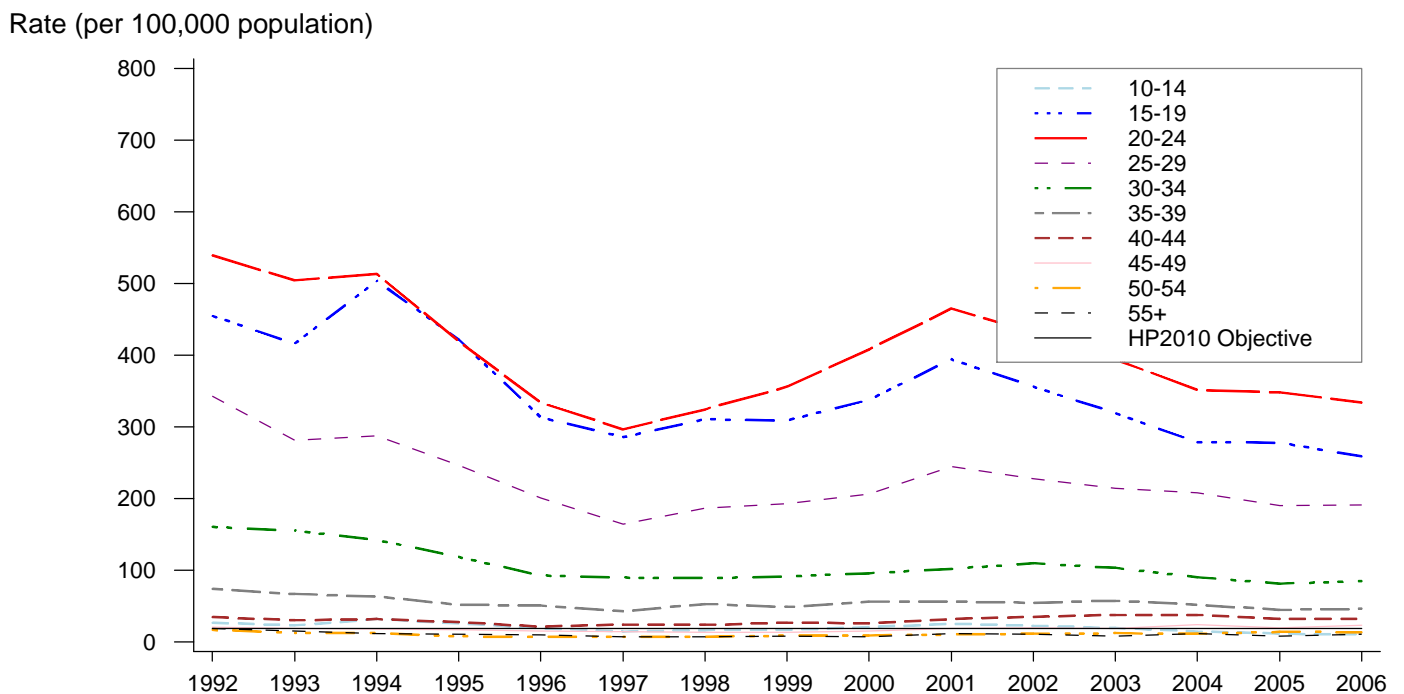


Figure 13. Gonorrhea -- Reported Rates by Age: NYS Exclusive of NYC, 1992-2006 and the Healthy People 2010 (HP2010) Objective



Note: The HP2010 Objective for gonorrhea is 19 case per 100,000 population.

Figure 14.1 Gonorrhea -- Age- and Sex-Specific Rates: NYS Exclusive of NYC, 2006

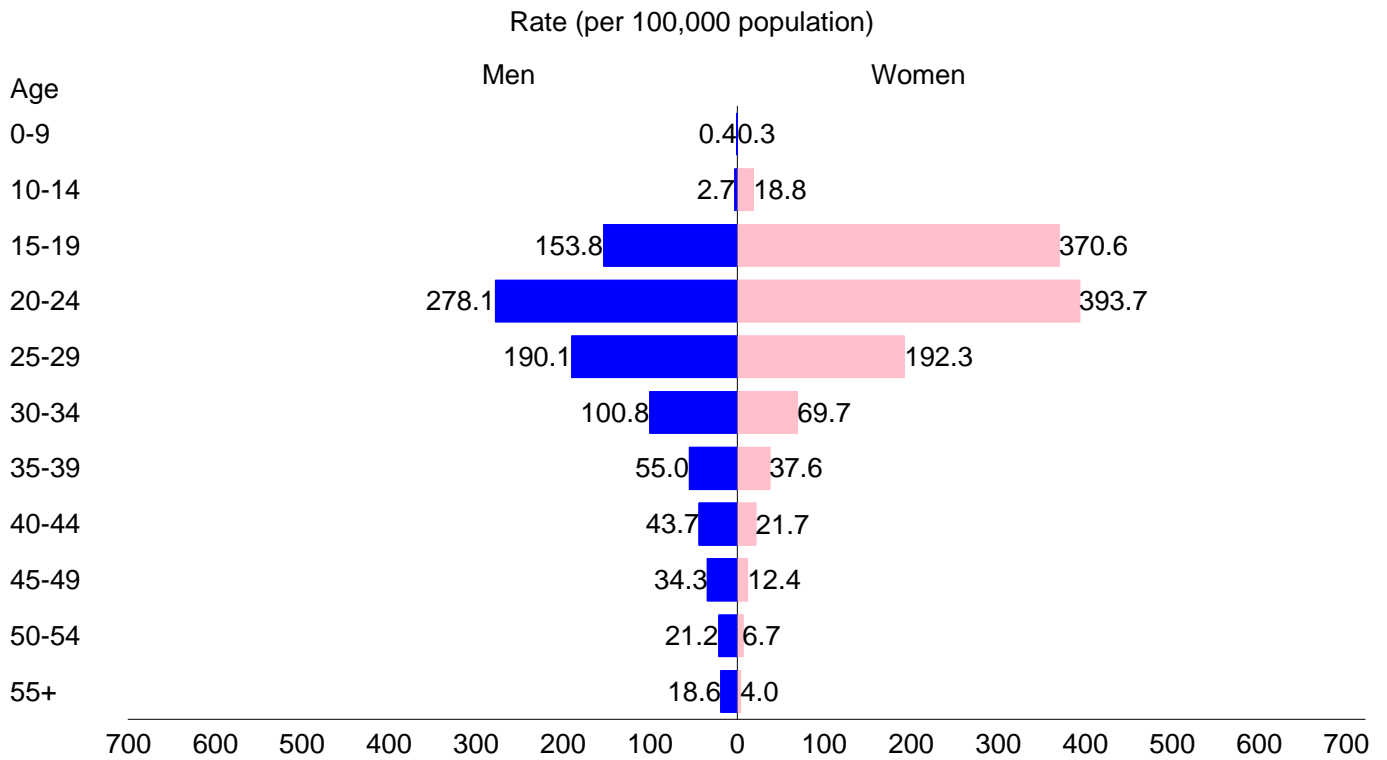
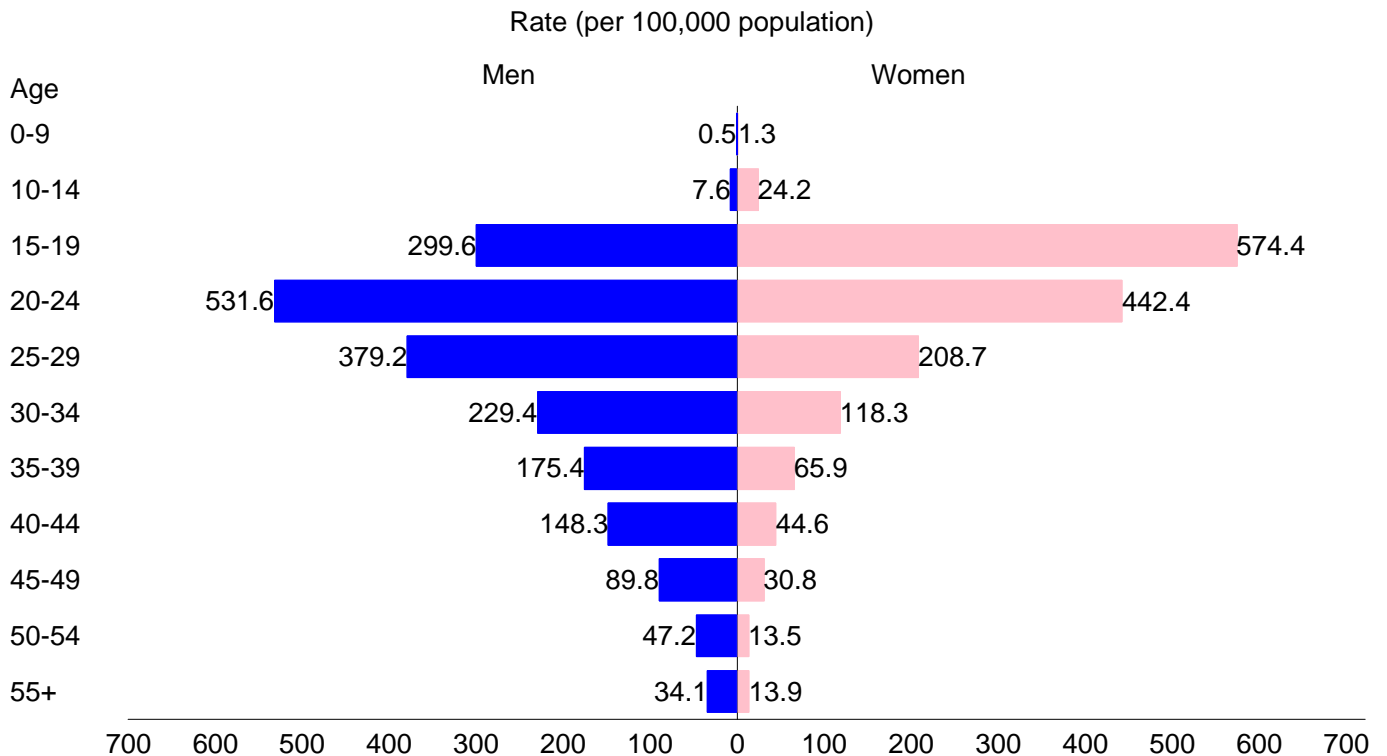


Figure 14.2 Gonorrhea -- Age- and Sex-Specific Rates: NYC, 2006



Note: The HP2010 Objective for gonorrhea is 19 case per 100,000 population.

Figure 15. Chlamydia -- Reported Rates: 2001-2006

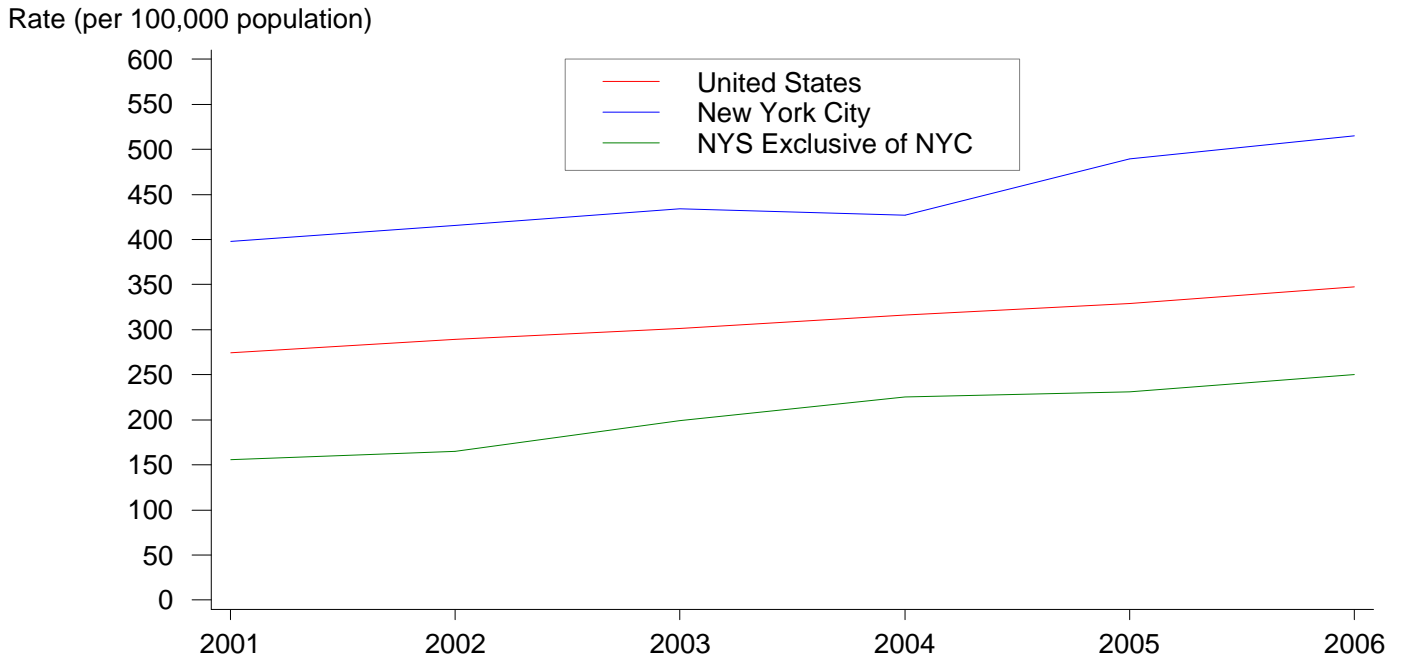
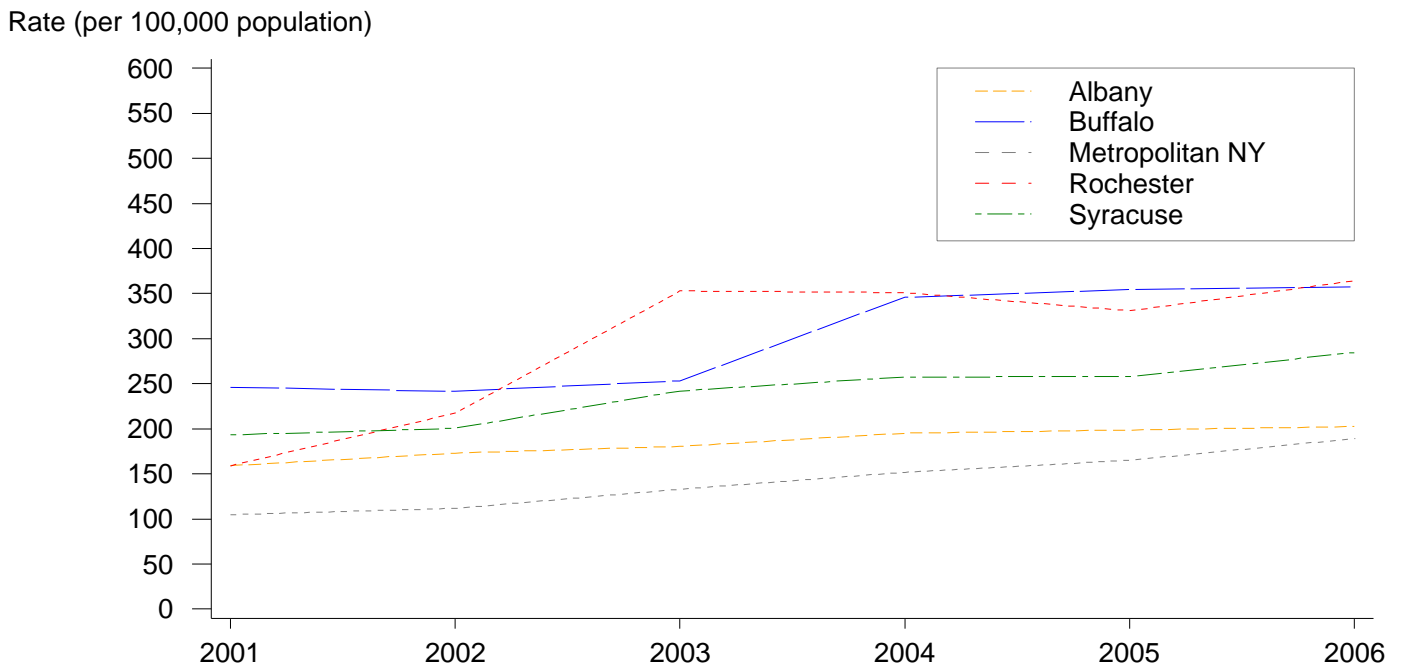


Figure 16. Chlamydia -- Reported Rates by Region: NYS Exclusive of NYC, 2001-2006



Note: Chlamydia became reportable in NYS in August 2000.

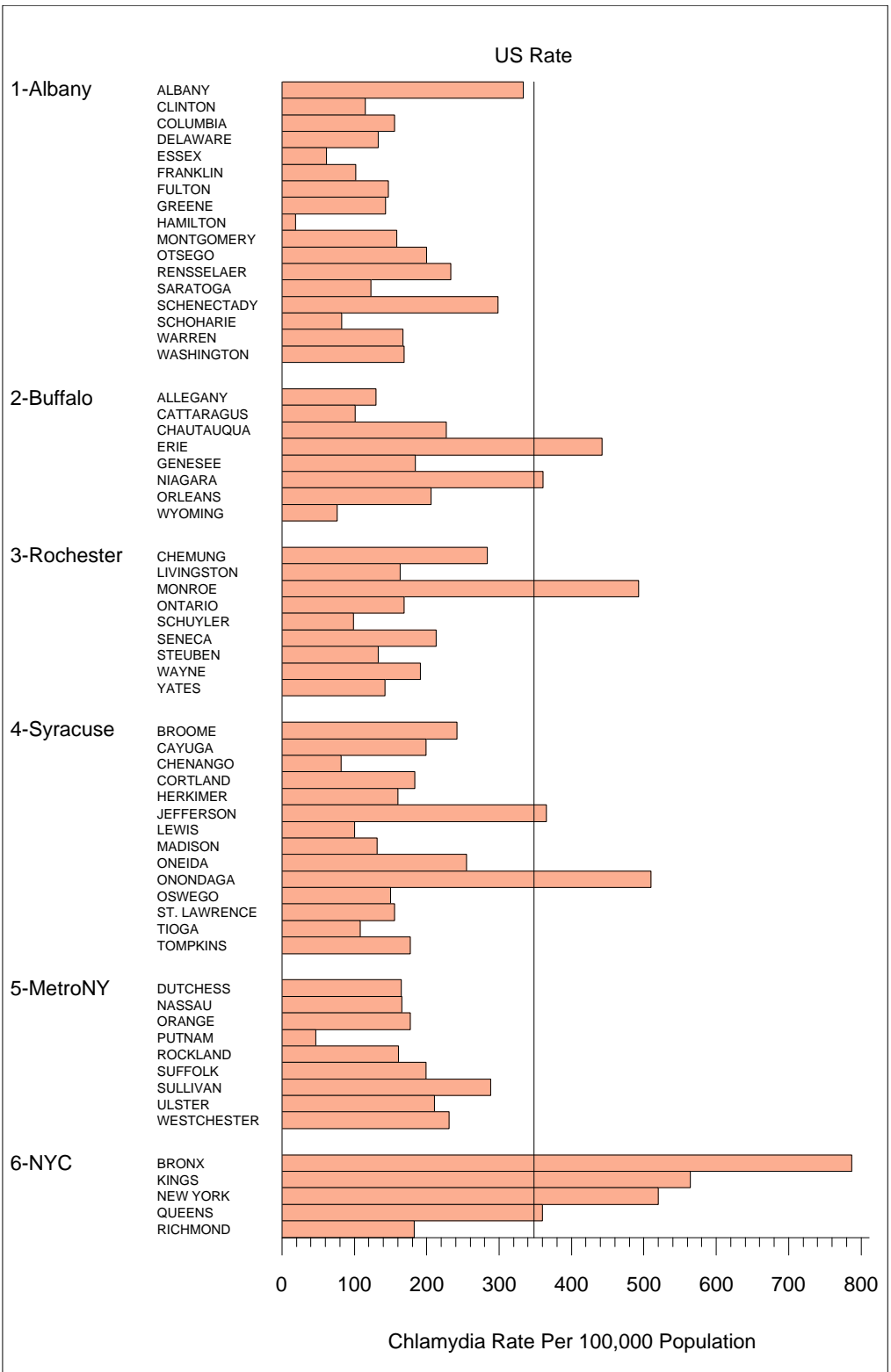
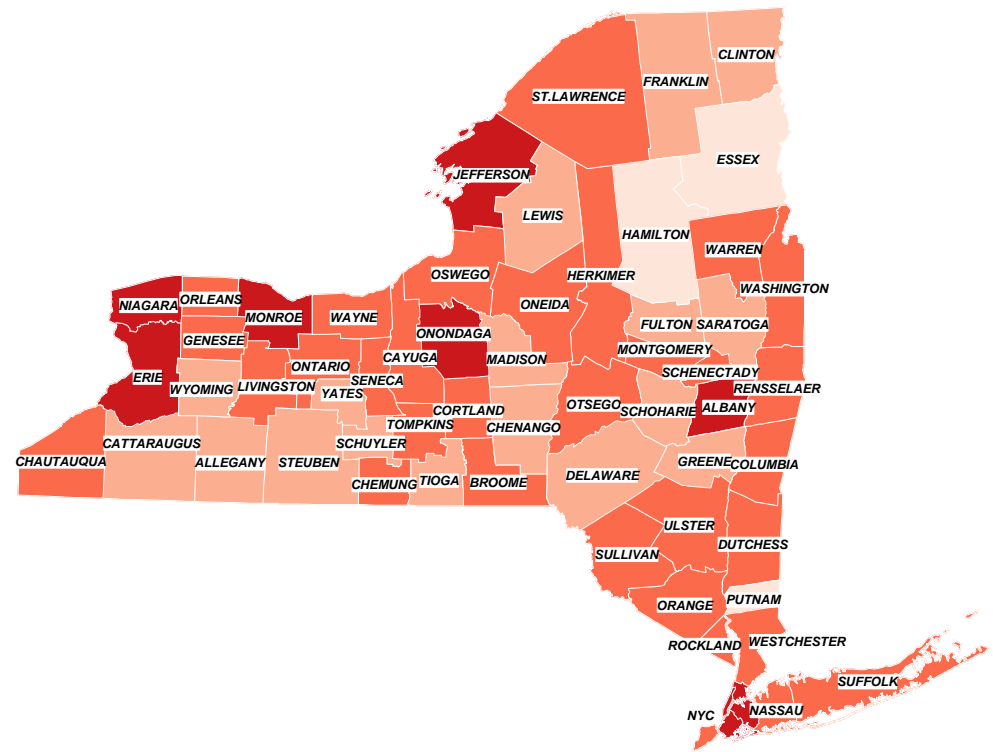


Figure 17. Chlamydia Rates by County: New York State, 2006

Chlamydia Rate Per 100,000 Population

- 0-75
- 75.1-150
- 150.1-300
- >300



Note: The 2006 US national rate for chlamydia is 347.8 cases per 100,000 population.

Figure 18. Chlamydia -- Reported Rates by Sex: NYS Exclusive of NYC, 2001-2006

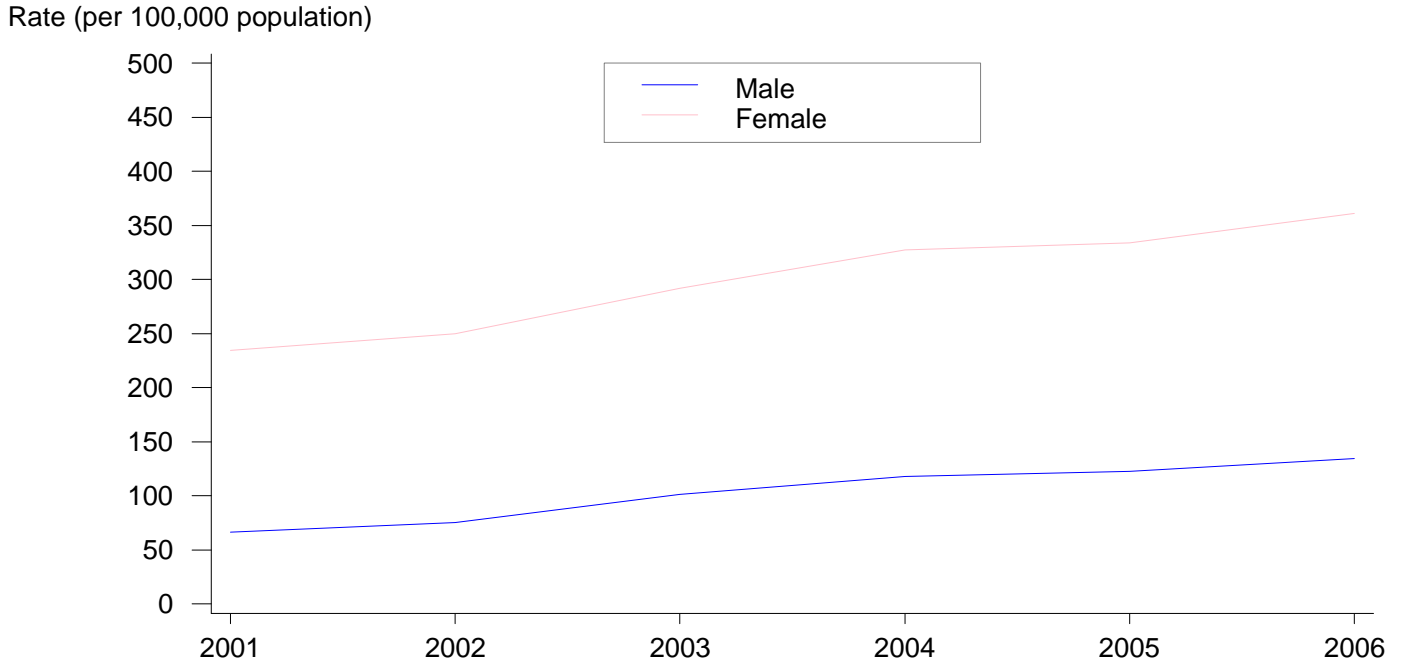
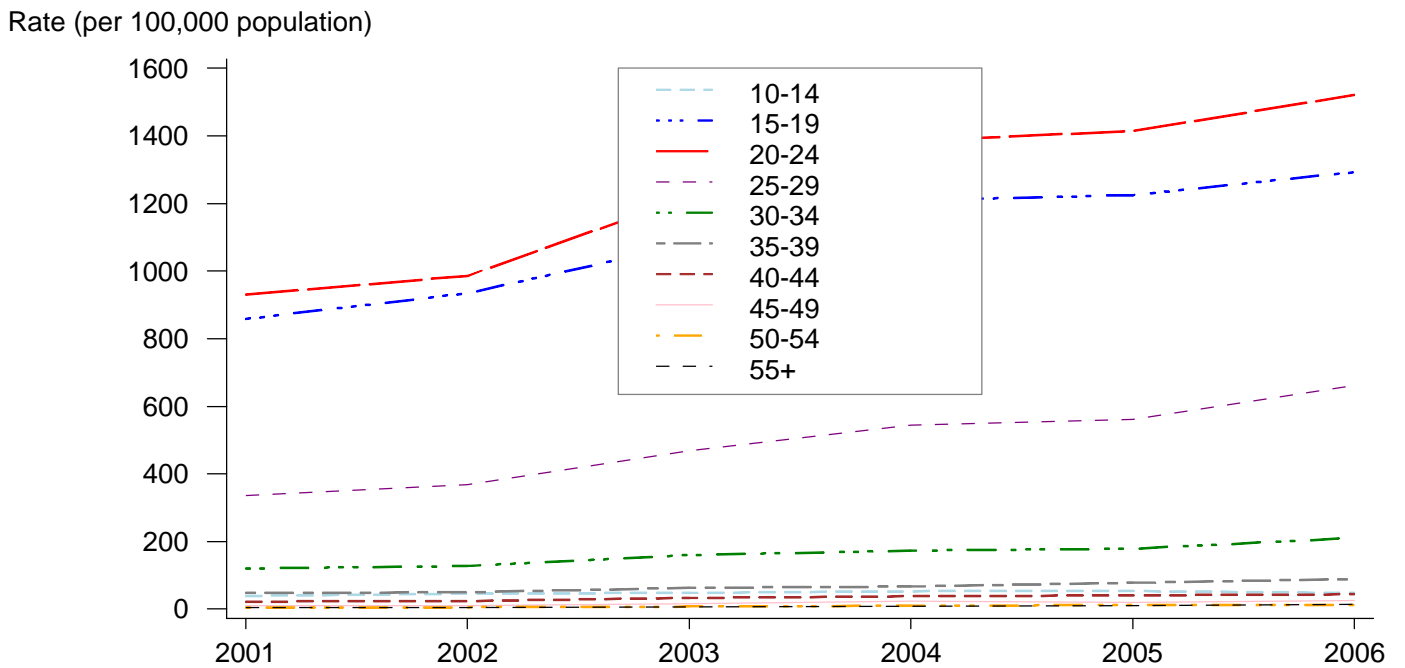


Figure 19. Chlamydia -- Reported Rates by Age: NYS Exclusive of NYC, 2001-2006



Note: Chlamydia became reportable in NYS in August 2000.

Figure 20.1 Chlamydia -- Age- and Sex-Specific Rates: NYS Exclusive of NYC, 2006

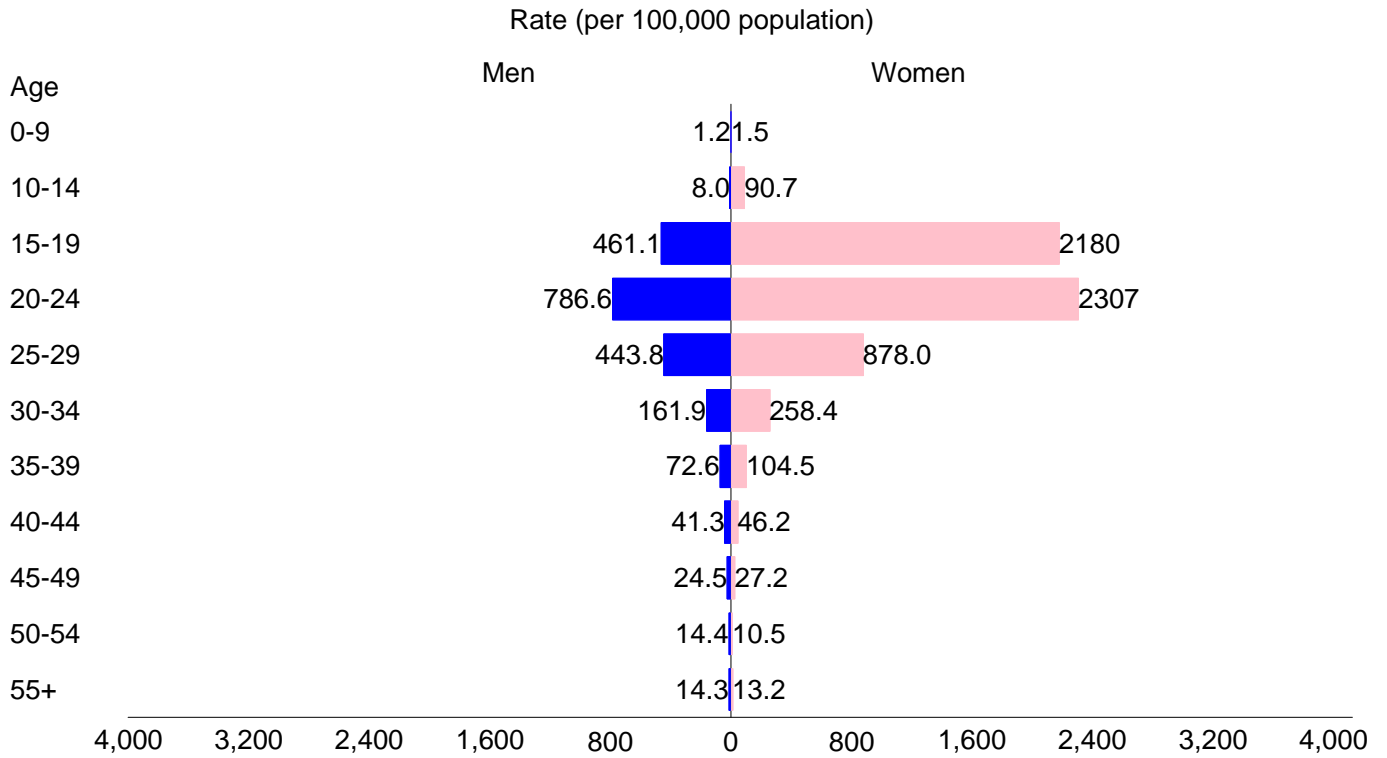


Figure 20.2 Chlamydia -- Age- and Sex-Specific Rates: NYC, 2006

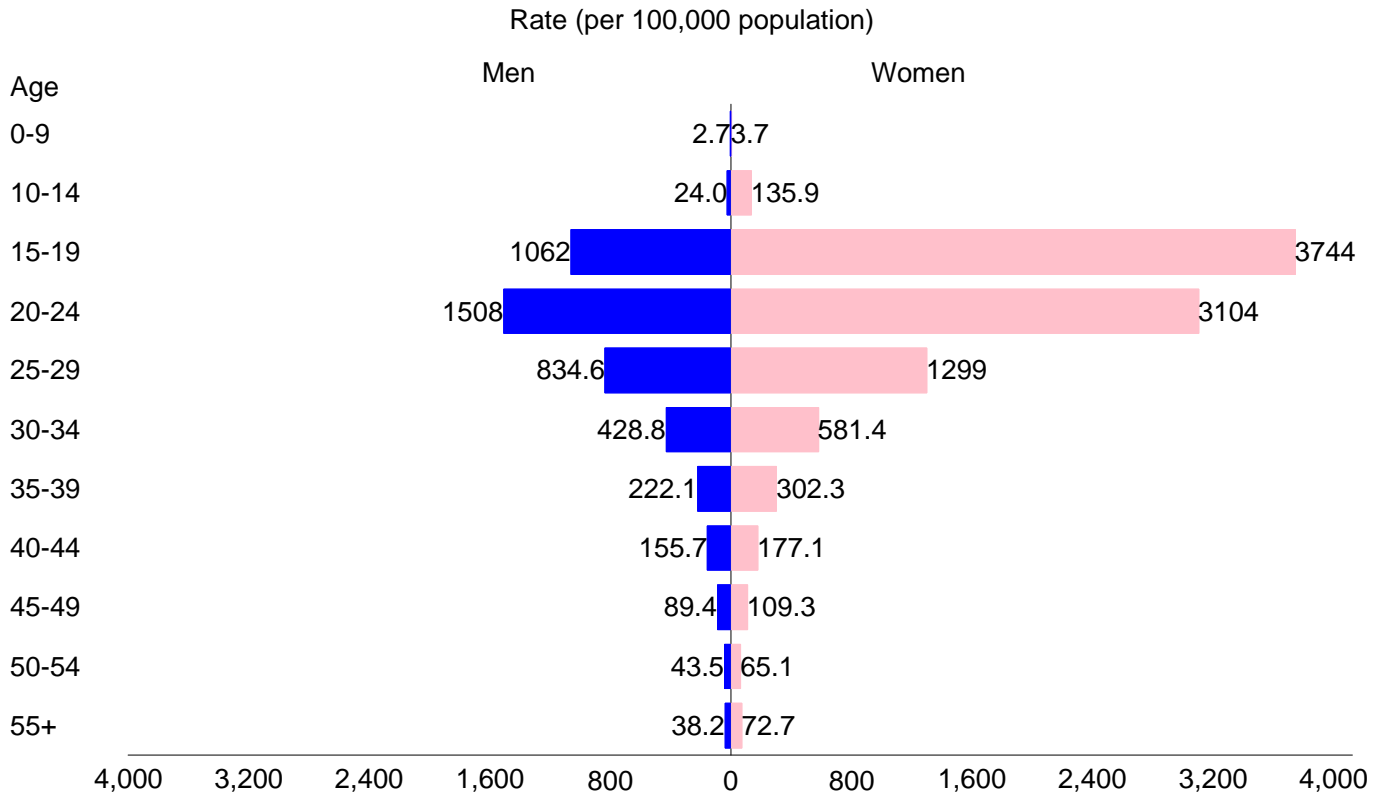


Table 1. Early syphilis -- Reported cases and rates per 100,000: United States, New York City, and New York State exclusive of New York City, 1960-2006

Year	Primary and Secondary Syphilis						Early Latent Syphilis					
	United States		NYC		Upstate NY		United States		NYC		Upstate NY	
	Cases	Rate	Cases	Rate	Cases	Rate	Cases	Rate	Cases	Rate	Cases	Rate
1960	16,145	9.1	2,607	33.7	409	4.5	18,017	10.1	2,655	34.4	192	2.1
1961	19,851	11.0	3,384	43.6	582	6.3	19,486	10.8	3,734	48.1	248	2.7
1962	21,067	11.5	3,333	42.9	642	6.8	19,585	10.7	3,846	49.5	394	4.2
1963	22,251	11.9	3,489	45.0	715	7.5	18,235	9.8	3,961	51.1	382	4.0
1964	22,969	12.1	3,165	40.9	637	6.5	17,781	9.4	4,623	59.7	331	3.4
1965	23,338	12.2	2,889	36.8	556	5.6	17,458	9.1	4,154	53.1	279	2.8
1966	21,414	11.0	2,445	31.4	377	3.8	15,950	8.2	3,389	43.3	235	2.4
1967	21,053	10.7	2,086	25.9	310	3.1	15,554	7.9	2,403	29.9	181	1.8
1968	19,019	9.6	2,231	27.7	333	3.3	15,150	7.6	2,225	27.6	186	1.9
1969	19,130	9.5	2,616	32.4	274	2.7	15,402	7.6	1,631	20.2	140	1.4
1970	21,982	10.8	3,779	46.8	406	3.9	16,311	8.0	2,061	25.5	164	1.6
1971	23,783	11.5	3,844	48.7	456	4.3	19,417	9.4	2,136	27.1	213	2.0
1972	24,429	11.7	4,041	50.6	438	4.1	20,784	9.9	2,106	26.4	255	2.4
1973	24,825	11.7	3,325	42.1	438	4.1	23,584	11.2	2,402	30.4	321	3.0
1974	25,385	11.9	3,145	40.5	531	4.9	25,124	11.8	3,243	41.7	368	3.4
1975	25,561	11.9	2,864	37.8	402	3.7	26,569	12.3	3,605	47.6	323	3.0
1976	23,731	10.9	2,494	33.2	252	2.4	25,363	11.7	3,618	48.2	229	2.2
1977	20,399	9.3	1,881	25.1	272	2.6	21,329	9.7	1,979	26.4	215	2.0
1978	21,656	9.8	2,058	27.8	225	2.1	19,628	8.8	1,735	23.4	214	2.0
1979	24,874	11.1	2,561	35.5	304	2.8	20,459	9.1	1,602	22.2	199	1.9
1980	27,204	12.0	2,393	33.2	336	3.1	20,297	8.9	1,443	20.0	232	2.2
1981	31,266	13.6	2,581	36.7	455	4.4	21,033	9.2	1,685	24.0	288	2.8
1982	33,613	14.5	2,580	37.1	479	4.6	21,894	9.5	1,903	27.4	380	3.6
1983	32,698	14.0	2,459	35.6	420	4.0	23,738	10.2	1,881	27.3	326	3.1
1984	28,607	12.1	2,280	32.5	338	3.2	23,131	9.8	1,906	27.2	270	2.6
1985	27,131	11.4	2,169	30.3	362	3.5	21,689	9.1	2,305	32.2	284	2.7
1986	27,667	11.5	2,112	29.2	285	2.7	21,656	9.0	2,005	27.7	205	1.9
1987	35,585	14.7	4,542	62.1	368	3.5	28,233	11.7	3,501	47.9	248	2.4
1988	40,474	16.6	5,042	68.4	646	6.1	35,968	14.7	4,515	61.3	546	5.2
1989	45,826	18.6	4,362	59.2	1,022	9.7	45,394	18.4	5,847	79.4	939	8.9
1990	50,578	20.3	4,265	57.8	1,048	9.9	55,397	22.2	7,485	101.5	1,199	11.3
1991	42,950	17.0	3,133	42.8	692	6.5	53,855	21.3	6,769	92.4	892	8.4
1992	34,009	13.3	2,246	30.7	350	3.3	49,929	19.5	5,373	73.4	740	6.9
1993	26,527	10.2	1,129	15.3	258	2.4	41,919	16.1	3,747	50.8	509	4.7
1994	20,641	7.8	626	8.4	175	1.6	32,017	12.2	2,360	31.7	320	3.0
1995	16,543	6.2	362	4.8	85	0.8	26,657	10.0	1,944	26.0	157	1.4
1996	11,405	4.2	138	1.8	76	0.7	20,187	7.5	1,077	14.4	125	1.2
1997	8,556	3.1	97	1.3	41	0.4	16,631	6.1	666	8.8	93	0.8
1998	7,007	2.5	81	1.1	37	0.3	12,696	4.6	644	8.5	35	0.3
1999	6,617	2.4	130	1.7	20	0.2	11,534	4.1	659	8.7	41	0.4
2000	5,979	2.1	117	1.5	15	0.1	9,465	3.4	447	5.6	20	0.2
2001	6,103	2.1	282	3.8	22	0.2	8,701	3.0	548	7.4	18	0.2
2002	6,862	2.4	434	5.8	45	0.4	8,429	2.9	727	9.8	26	0.2
2003	7,177	2.5	531	6.6	53	0.5	8,361	2.9	951	11.9	61	0.6
2004	7,980	2.7	621	7.8	106	1.0	7,768	2.6	681	8.5	67	0.6
2005	8,724	2.9	616	7.7	89	0.8	8,176	2.8	980	12.2	104	0.9
2006	9,756	3.3	578	7.2	158	1.4	9,186	3.1	901	11.2	94	0.8

Table 2. Syphilis-- Reported cases and rates per 100,000 by stage and county: New York State, 2006

County	Syphilis										
	Primary & Secondary		Early Latent		Total Early		Total Late & Late Latent*		Congenital	Total Syphilis	
	Cases	Rate	Cases	Rate	Cases	Rate	Cases	Rate		Cases	Rate
ALBANY	3	1.0	2	0.7	5	1.7	5	1.7	0	10	3.4
CLINTON	3	3.8	0	0.0	3	3.8	1	1.3	0	4	5.0
COLUMBIA	0	0.0	1	1.6	1	1.6	1	1.6	0	2	3.2
DELAWARE	0	0.0	0	0.0	0	0.0	0	0.0	0	0	0.0
ESSEX	0	0.0	0	0.0	0	0.0	0	0.0	0	0	0.0
FRANKLIN	0	0.0	1	2.0	1	2.0	1	2.0	0	2	3.9
FULTON	0	0.0	1	1.8	1	1.8	0	0.0	0	1	1.8
GREENE	1	2.1	0	0.0	1	2.1	0	0.0	0	1	2.1
HAMILTON	0	0.0	0	0.0	0	0.0	0	0.0	0	0	0.0
MONTGOMERY	0	0.0	0	0.0	0	0.0	0	0.0	0	0	0.0
OTSEGO	0	0.0	0	0.0	0	0.0	0	0.0	0	0	0.0
RENSSELAER	3	2.0	1	0.7	4	2.6	4	2.6	0	8	5.2
SARATOGA	2	1.0	1	0.5	3	1.5	3	1.5	0	6	3.0
SCHENECTADY	1	0.7	0	0.0	1	0.7	3	2.0	0	4	2.7
SCHOHARIE	0	0.0	0	0.0	0	0.0	0	0.0	0	0	0.0
WARREN	1	1.6	1	1.6	2	3.2	3	4.7	0	5	7.9
WASHINGTON	0	0.0	0	0.0	0	0.0	0	0.0	0	0	0.0
ALBANY AREA TOTAL	14	1.0	8	0.6	22	1.5	21	1.4	0	43	3.0
ALLEGANY	0	0.0	0	0.0	0	0.0	2	4.0	0	2	4.0
CATTARAUGUS	0	0.0	0	0.0	0	0.0	1	1.2	0	1	1.2
CHAUTAUQUA	0	0.0	1	0.7	1	0.7	4	2.9	0	5	3.6
ERIE	17	1.8	11	1.2	28	2.9	6	0.6	0	34	3.6
GENESEE	0	0.0	0	0.0	0	0.0	0	0.0	0	0	0.0
NIAGARA	1	0.5	3	1.4	4	1.8	1	0.5	1	6	2.7
ORLEANS	0	0.0	0	0.0	0	0.0	0	0.0	0	0	0.0
WYOMING	0	0.0	0	0.0	0	0.0	0	0.0	0	0	0.0
BUFFALO AREA TOTAL	18	1.1	15	0.9	33	2.1	14	0.9	1	48	3.0
CHEMUNG	2	2.2	0	0.0	2	2.2	2	2.2	0	4	4.4
LIVINGSTON	1	1.6	0	0.0	1	1.6	0	0.0	0	1	1.6
MONROE	13	1.8	8	1.1	21	2.9	64	8.7	0	85	11.6

*: Total late and late latent cases includes 37 cases of neurosyphilis.

Table 2. Syphilis-- Reported cases and rates per 100,000 by stage and county: New York State, 2006

County	Syphilis										
	Primary & Secondary		Early Latent		Total Early		Total Late & Late Latent*		Congenital	Total Syphilis	
	Cases	Rate	Cases	Rate	Cases	Rate	Cases	Rate		Cases	Cases
ONTARIO	0	0.0	0	0.0	0	0.0	2	2.0	0	2	2.0
SCHUYLER	0	0.0	0	0.0	0	0.0	0	0.0	0	0	0.0
SENECA	1	3.0	0	0.0	1	3.0	0	0.0	0	1	3.0
STEUBEN	1	1.0	0	0.0	1	1.0	1	1.0	0	2	2.0
WAYNE	0	0.0	0	0.0	0	0.0	2	2.1	0	2	2.1
YATES	0	0.0	1	4.1	1	4.1	0	0.0	0	1	4.1
ROCHESTER AREA TOTAL	18	1.4	9	0.7	27	2.1	71	5.6	0	98	7.8
BROOME	6	3.0	2	1.0	8	4.0	6	3.0	0	14	7.0
CAYUGA	0	0.0	0	0.0	0	0.0	2	2.4	0	2	2.4
CHENANGO	1	1.9	0	0.0	1	1.9	1	1.9	0	2	3.9
CORTLAND	0	0.0	0	0.0	0	0.0	0	0.0	0	0	0.0
HERKIMER	0	0.0	0	0.0	0	0.0	1	1.6	0	1	1.6
JEFFERSON	2	1.8	1	0.9	3	2.7	1	0.9	0	4	3.6
LEWIS	0	0.0	0	0.0	0	0.0	0	0.0	0	0	0.0
MADISON	0	0.0	0	0.0	0	0.0	1	1.4	0	1	1.4
ONEIDA	1	0.4	0	0.0	1	0.4	4	1.7	0	5	2.1
ONONDAGA	5	1.1	2	0.4	7	1.5	12	2.6	0	19	4.1
OSWEGO	0	0.0	0	0.0	0	0.0	1	0.8	0	1	0.8
ST. LAWRENCE	0	0.0	0	0.0	0	0.0	0	0.0	1	1	0.9
TIOGA	0	0.0	0	0.0	0	0.0	1	1.9	0	1	1.9
TOMPKINS	1	1.0	0	0.0	1	1.0	0	0.0	0	1	1.0
SYRACUSE AREA TOTAL	16	0.9	5	0.3	21	1.2	30	1.7	1	52	3.0
DUTCHESS	4	1.4	6	2.1	10	3.6	15	5.4	1	26	9.3
NASSAU	27	2.0	13	1.0	40	3.0	98	7.3	2	140	10.5
ORANGE	1	0.3	2	0.6	3	0.9	16	4.7	1	20	5.9
PUTNAM	1	1.0	0	0.0	1	1.0	7	7.3	1	9	9.4
ROCKLAND	1	0.3	0	0.0	1	0.3	17	5.9	0	18	6.3
SUFFOLK	32	2.3	20	1.4	52	3.7	149	10.5	0	201	14.2
SULLIVAN	2	2.7	3	4.1	5	6.8	11	14.9	0	16	21.6
ULSTER	1	0.6	6	3.4	7	3.9	6	3.4	0	13	7.3

*: Total late and late latent cases includes 37 cases of neurosyphilis.

Table 2. Syphilis-- Reported cases and rates per 100,000 by stage and county: New York State, 2006

County	Syphilis										
	Primary & Secondary		Early Latent		Total Early		Total Late & Late Latent*		Congenital	Total Syphilis	
	Cases	Rate	Cases	Rate	Cases	Rate	Cases	Rate		Cases	Rate
WESTCHESTER	23	2.5	7	0.8	30	3.2	143	15.5	3	176	19.1
METRO NY AREA TOTAL	92	1.9	57	1.2	149	3.0	462	9.4	8	619	12.5
UPSTATE NY TOTAL	158	1.4	94	0.9	252	2.3	598	5.5	10	860	7.8
BRONX	101	7.6	172	12.9	273	20.5	414	31.1	4	691	51.9
KINGS	159	6.4	255	10.3	414	16.8	748	30.3	6	1,168	47.4
NEW YORK	240	15.6	273	17.8	513	33.4	562	36.6	2	1,077	70.1
QUEENS	77	3.5	185	8.3	262	11.8	511	22.9	2	775	34.8
RICHMOND	1	0.2	16	3.6	17	3.8	33	7.4	0	50	11.3
NEW YORK CITY TOTAL	578	7.2	901	11.3	1,479	18.5	2,268	28.3	14	3,761	47.0
NEW YORK STATE TOTAL	736	3.9	995	5.2	1,731	9.1	2,866	15.1	24	4,621	24.4

*: Total late and late latent cases includes 37 cases of neurosyphilis.

Table 3. Early syphilis-- Reported cases and rates per 100,000 by age and sex: New York State, 2006

		Early Syphilis											
		Primary and Secondary						Early Latent					
		Male		Female		Total P&S		Male		Female		Total EL	
Area	Age Group	Cases	Rate	Cases	Rate	Cases	Rate	Cases	Rate	Cases	Rate	Cases	Rate
UPSTATE NY	10-14	0	0.0	0	0.0	0	0.0	0	0.0	0	0.0	0	0.0
	15-19	5	1.3	0	0.0	5	0.7	4	1.0	4	1.1	8	1.1
	20-24	18	5.3	2	0.6	20	3.0	7	2.1	2	0.6	9	1.4
	25-29	20	6.5	5	1.6	25	4.1	5	1.6	3	1.0	8	1.3
	30-34	15	4.0	1	0.3	16	2.1	9	2.4	3	0.8	12	1.6
	35-39	26	5.8	1	0.2	27	2.9	17	3.8	4	0.9	21	2.3
	40-44	24	5.2	0	0.0	24	2.6	12	2.6	2	0.4	14	1.5
	45-49	18	4.5	2	0.5	20	2.5	7	1.8	1	0.2	8	1.0
	50-54	14	4.0	0	0.0	14	1.9	6	1.7	1	0.3	7	1.0
	55+	7	2.2	0	0.0	7	0.9	5	1.5	2	0.5	7	0.9
	TOTAL	147	2.7	11	0.2	158	1.4	72	1.3	22	0.4	94	0.9
NEW YORK CITY	10-14	0	0.0	0	0.0	0	0.0	1	0.4	0	0.0	1	0.2
	15-19	15	5.7	3	1.2	18	3.5	15	5.7	7	2.8	22	4.3
	20-24	59	20.8	2	0.7	61	10.4	44	15.5	16	5.3	60	10.2
	25-29	107	33.4	2	0.6	109	16.3	60	18.7	17	4.9	77	11.5
	30-34	99	30.0	3	0.9	102	15.0	93	28.2	16	4.6	109	16.1
	35-39	131	40.0	1	0.3	132	19.6	148	45.2	30	8.7	178	26.5
	40-44	86	29.0	3	0.9	89	14.3	143	48.2	46	14.1	189	30.4
	45-49	34	13.4	1	0.4	35	6.5	95	37.4	17	6.0	112	20.8
	50-54	16	7.3	1	0.4	17	3.6	34	15.6	19	7.3	53	11.1
	55+	13	6.6	2	0.7	15	3.1	69	35.1	31	10.7	100	20.6
	TOTAL	560	14.8	18	0.4	578	7.2	702	18.6	199	4.7	901	11.3
NEW YORK STATE	10-14	0	0.0	0	0.0	0	0.0	1	0.1	0	0.0	1	0.1
	15-19	20	3.1	3	0.5	23	1.8	19	2.9	11	1.8	30	2.4
	20-24	77	12.3	4	0.6	81	6.5	51	8.2	18	2.9	69	5.5
	25-29	127	20.2	7	1.1	134	10.4	65	10.4	20	3.0	85	6.6
	30-34	114	16.1	4	0.5	118	8.2	102	14.4	19	2.6	121	8.4
	35-39	157	20.2	2	0.2	159	10.0	165	21.2	34	4.2	199	12.5
	40-44	110	14.6	3	0.4	113	7.3	155	20.6	48	6.1	203	13.2
	45-49	52	8.0	3	0.4	55	4.1	102	15.6	18	2.6	120	8.9
	50-54	30	5.2	1	0.2	31	2.6	40	7.0	20	3.2	60	5.0
	55+	20	3.9	2	0.3	22	1.8	74	14.3	33	4.6	107	8.7
	TOTAL	707	7.7	29	0.3	736	3.9	774	8.5	221	2.2	995	5.2

Table 4. Unknown latent and late latent syphilis-- Reported cases and rates per 100,000 by age and sex:
New York State, 2006

		Unknown and Late Latent Syphilis					
		Male		Female		Total	
Area	Age Group	Cases	Rate	Cases	Rate	Cases	Rate
UPSTATE NY	10-14	1	0.2	0	0.0	1	0.1
	15-19	7	1.8	3	0.8	10	1.3
	20-24	15	4.4	10	3.1	25	3.8
	25-29	16	5.2	16	5.2	32	5.2
	30-34	25	6.6	29	7.5	54	7.1
	35-39	36	8.0	23	4.9	59	6.4
	40-44	40	8.7	30	6.5	70	7.6
	45-49	47	11.8	22	5.3	69	8.5
	50-54	39	11.0	25	6.7	64	8.8
	55+	93	28.8	111	26.1	204	27.3
	TOTAL	319	6.0	270	4.8	589	5.4
NEW YORK CITY	10-14	1	0.4	2	0.8	3	0.6
	15-19	24	9.2	15	6.0	39	7.6
	20-24	77	27.1	55	18.0	132	22.4
	25-29	143	44.7	69	19.7	212	31.6
	30-34	206	62.4	100	28.7	306	45.1
	35-39	245	74.7	139	40.3	384	57.1
	40-44	242	81.6	158	48.6	400	64.3
	45-49	150	59.1	87	30.5	237	43.9
	50-54	95	43.5	48	18.5	143	29.9
	55+	213	108.4	165	57.2	378	77.9
	TOTAL	1,400	37.0	840	19.9	2,240	28.0
NEW YORK STATE	10-14	2	0.3	2	0.3	4	0.3
	15-19	31	4.8	18	2.9	49	3.9
	20-24	92	14.8	65	10.4	157	12.6
	25-29	159	25.3	85	12.9	244	19.0
	30-34	231	32.6	129	17.6	360	25.0
	35-39	281	36.1	162	20.0	443	27.9
	40-44	282	37.4	188	23.9	470	30.5
	45-49	197	30.1	109	15.6	306	22.6
	50-54	134	23.4	73	11.6	207	17.2
	55+	306	59.0	276	38.6	582	47.2
	TOTAL	1,719	18.8	1,110	11.3	2,829	14.9

Table 5.1. Early syphilis -- Men -- Reported cases and rates per 100,000 by age and county: New York State, 2006

County	Early Syphilis -- Men																													
	Age Group																													
	15-19		20-24		25-29		30-34		35-39		40-44		45-49		50-54		55+		Total											
Cases	Rate	Cases	Rate	Cases	Rate	Cases	Rate	Cases	Rate	Cases	Rate	Cases	Rate	Cases	Rate	Cases	Rate	Cases	Rate											
ALBANY							1	9.8		1	8.8		1	8.9		1	9.4				4	2.8								
CLINTON							1	30.8					1	27.9		1	33.6				3	7.3								
COLUMBIA													1	38.3							1	3.2								
FRANKLIN				1	40.7																1	3.5								
FULTON																1	53.0				1	3.7								
GREENE																1	63.4				1	4.0								
RENSSELAER				1	18.0		1	22.2					1	16.0			1	19.5				4	5.4							
SARATOGA										1	11.2		1	11.5			1	13.9				3	3.0							
SCHENECTADY				1	24.3																1	1.4								
WARREN							1	47.6						1	40.3							2	6.5							
ALBANY AREA TOTAL				3	7.6		1	2.9		3	7.3		2	4.2		5	10.5		3	7.0		4	10.2		21	3.7				
ERIE		2	6.2		4	13.8		3	11.4		3	9.6		3	8.3		3	7.8		2	5.9		4	14.0		24	5.3			
NIAGARA		1	12.7															1	14.3					2	1.9					
BUFFALO AREA TOTAL		3	7.5		4	11.4		3	9.3		3	7.9		3	6.7		3	6.3		2	4.7		5	14.0		26	4.6			
CHEMUNG														1	26.0						1	38.5		2	4.4					
LIVINGSTON																		1	47.5					1	3.1					
MONROE		1	3.7		2	8.2		1	4.6		2	8.0		5	17.6		4	13.6		1	3.8		4	17.3		1	4.6			
SENECA												1	78.5											1	6.0					
STEUBEN														1	25.1											1	2.1			
YATES																					1	113.5		1	8.3					
ROCHESTER AREA TOTAL		1	2.6		2	5.8		1	3.3		2	5.7		6	14.6		6	14.1		1	2.6		5	15.0		3	9.6			
BROOME								1	17.0		2	26.2			2	28.4		1	15.9					6	6.2					
CHENANGO											1	49.0														1	4.0			
JEFFERSON					1	16.4						1	19.5			1	28.1								3	5.2				
ONEIDA											1	10.0														1	0.9			
ONONDAGA		2	12.2		1	6.9						1	5.6		1	5.5		2	12.2								7	3.2		
TOMPKINS						1	27.5																				1	2.1		
SYRACUSE AREA TOTAL		2	4.4		2	4.4		1	2.9		1	2.5		6	13.2		1	2.2		5	12.4		1	2.9		19	3.4			
DUTCHESS						2	25.8					2	15.9		2	15.2		1	9.2								7	5.0		
NASSAU					2	5.6		8	23.5		6	13.6		5	9.4		7	12.5		2	4.0		1	2.3		2	5.1		33	5.1
ORANGE																					1	11.1					1	0.6		

Table 5.1. Early syphilis -- Men -- Reported cases and rates per 100,000 by age and county: New York State, 2006

Early Syphilis -- Men																				
Age Group																				
County	15-19		20-24		25-29		30-34		35-39		40-44		45-49		50-54		55+		Total	
	Cases	Rate	Cases	Rate	Cases	Rate	Cases	Rate	Cases	Rate	Cases	Rate	Cases	Rate	Cases	Rate	Cases	Rate	Cases	Rate
PUTNAM							1	28.4											1	2.1
ROCKLAND									1	8.6									1	0.7
SUFFOLK	2	4.4	4	10.2	3	7.4	5	9.4	12	18.8	6	9.6	9	17.9	1	2.2	3	7.3	45	6.5
SULLIVAN					1	55.6			3	95.6	1	30.4							5	13.2
ULSTER			1	18.3			1	15.5	1	12.4	3	37.4			1	15.8			7	7.9
WESTCHESTER	1	3.7	7	31.1	5	19.1	2	6.0	2	5.2	2	5.1	2	6.2	2	6.8	3	11.0	26	5.9
METRO NY AREA TOTAL	3	1.9	14	10.4	19	14.1	15	8.6	26	12.3	21	9.9	14	7.8	5	3.1	9	6.2	126	5.2
BRONX	7	13.6	24	50.6	35	77.9	27	55.6	44	88.0	31	69.8	26	70.9	11	35.1	17	60.0	222	35.9
KINGS	8	9.0	37	41.5	53	57.9	58	65.0	68	75.2	51	59.1	25	33.2	8	12.2	24	42.8	333	28.9
NEW YORK	7	19.4	27	49.7	42	52.8	71	85.9	121	166.3	99	168.4	55	105.9	23	52.0	27	64.2	472	64.8
QUEENS	8	11.5	14	17.7	36	40.0	32	34.4	45	46.7	45	50.5	23	31.0	7	11.2	12	21.1	222	20.7
RICHMOND			1	7.4	1	7.0	4	24.1	1	5.5	3	16.6			1	6.9	2	15.2	13	6.1
NYC AREA TOTAL	30	11.5	103	36.3	167	52.2	192	58.2	279	85.1	229	77.2	129	50.8	50	22.9	82	41.7	1,262	33.4

Table 5.2. Early syphilis -- Women -- Reported cases and rates per 100,000 by age and county: New York State, 2006

County	Early Syphilis -- Women																							
	Age Group																							
	10-14		15-19		20-24		25-29		30-34		35-39		40-44		45-49		50-54		55+		Total			
Cases	Rate	Cases	Rate	Cases	Rate	Cases	Rate	Cases	Rate	Cases	Rate	Cases	Rate	Cases	Rate	Cases	Rate	Cases	Rate	Cases	Rate			
ALBANY													1	8.3							1	0.7		
ALBANY AREA TOTAL													1	8.3							1	0.7		
CHAUTAUQUA																	1	19.8				1	1.4	
ERIE			2	6.4			1	3.6			1	2.7											4	0.8
NIAGARA			1	13.0							1	11.1											2	1.8
BUFFALO AREA TOTAL			3	6.7			1	2.6			2	3.9			1	2.0					7	1.0		
BROOME							2	37.6															2	1.9
SYRACUSE AREA TOTAL							2	37.6															2	1.9
DUTCHESS							1	14.2			2	16.1											3	2.1
NASSAU			1	2.5	1	3.1	1	2.8	2	4.3	1	1.7					1	2.1					7	1.0
ORANGE					1	11.3			1	8.1													2	1.2
SUFFOLK					2	5.5	2	4.8	1	1.8					1	1.9					1	1.9	7	1.0
WESTCHESTER							1	3.6					1	2.4	1	2.8					1	2.6	4	0.8
METRO NY AREA TOTAL			1	0.8	4	3.6	5	4.1	4	2.5	3	1.5	1	0.5	2	1.2	1	0.7	2	1.2	23	1.0		
BRONX			2	4.1	4	7.6	3	5.6			11	18.8	17	31.9	5	11.5	3	7.8	6	13.4	51	7.1		
KINGS			1	1.2	8	8.4	6	5.9	12	11.9	10	9.8	15	15.1	6	6.8	9	11.3	14	16.7	81	6.2		
NEW YORK			4	10.7	3	4.6	6	6.8	4	4.9	2	2.9	8	13.3	5	8.9	4	7.6	5	8.2	41	5.1		
QUEENS			3	4.6	3	3.8	4	4.4	3	3.2	7	7.2	8	8.6	2	2.5	3	4.2	7	8.5	40	3.5		
RICHMOND											1	5.4	1	5.2			1	6.1	1	6.0	4	1.7		
NYC AREA TOTAL			10	4.0	18	5.9	19	5.4	19	5.5	31	9.0	49	15.1	18	6.3	20	7.7	33	11.4	217	5.1		

Table 6. Gonorrhea-- Reported cases and rates per 100,000: United States, New York City, and New York State exclusive of New York City, 1960-2006

Year	Gonorrhea					
	United States		NYC		Upstate NY	
	Cases	Rate	Cases	Rate	Cases	Rate
1960	258,933	145.4	16,680	215.7	4,689	52.1
1961	264,158	145.8	18,280	235.4	4,994	53.9
1962	263,714	143.6	18,900	243.5	5,325	56.5
1963	278,289	149.0	22,920	295.6	5,027	52.4
1964	300,666	158.9	25,830	333.6	5,852	60.1
1965	324,925	169.5	28,990	370.2	7,133	72.2
1966	351,738	181.2	29,660	378.7	7,952	80.4
1967	404,836	205.9	27,380	341.1	9,002	90.0
1968	464,543	233.4	34,830	432.5	10,423	103.5
1969	534,872	265.4	36,690	454.5	11,604	114.3
1970	600,072	294.2	36,730	454.6	12,352	119.7
1971	670,268	324.1	38,400	486.4	16,845	159.9
1972	767,215	366.6	43,760	548.4	21,181	199.0
1973	842,621	398.7	48,060	609.1	20,408	190.0
1974	906,121	424.7	48,220	620.2	20,516	189.8
1975	999,937	464.1	47,840	631.7	21,293	196.4
1976	100,199	460.6	50,260	669.3	19,803	187.6
1977	100,221	456.0	39,300	524.3	18,981	179.8
1978	101,343	456.3	40,570	547.6	19,622	183.8
1979	100,405	447.1	44,660	578.1	20,587	192.9
1980	100,402	442.1	44,280	614.8	21,283	198.1
1981	990,864	431.8	48,890	695.5	21,795	208.4
1982	960,633	414.7	48,210	694.2	20,707	198.4
1983	900,435	385.1	46,410	672.8	19,423	186.0
1984	878,556	372.5	48,540	692.2	18,882	181.2
1985	911,419	383.0	65,510	914.8	18,345	176.1
1986	892,229	371.5	76,400	1055	19,247	182.9
1987	787,532	325.0	66,545	909.9	17,707	168.1
1988	738,160	301.9	54,099	722.8	17,797	168.7
1989	733,294	297.1	40,550	550.5	17,433	165.3
1990	690,042	276.4	34,989	474.4	16,099	152.3
1991	621,918	245.8	28,945	395.3	14,586	136.7
1992	502,858	196.0	21,710	296.5	12,008	112.6
1993	444,649	171.1	18,477	250.5	10,882	100.9
1994	419,602	163.9	19,246	258.6	11,538	106.4
1995	392,651	147.5	16,361	218.8	9,614	88.3
1996	328,169	121.8	12,998	181.4	7,609	69.9
1997	327,665	120.2	14,556	193.0	6,801	62.4
1998	356,492	129.2	12,100	159.7	7,397	67.3
1999	360,813	129.3	12,207	161.1	7,663	69.5
2000	363,136	128.7	11,669	145.6	8,445	77.0
2001	361,705	126.8	12,614	169.4	9,687	89.9
2002	351,852	122.0	12,811	172.0	9,117	84.6
2003	335,104	115.2	13,468	168.2	8,484	77.4
2004	330,132	112.4	10,860	135.6	7,719	70.4
2005	339,593	114.6	10,596	132.3	7,316	66.7
2006	358,366	120.9	10,299	128.6	7,160	65.3

Note: The numbers of gonorrhea cases were recorded in thousands for New York City before 1986.

Table 7. Gonorrhea-- Reported cases and rates per 100,000 by region and county: New York State, 2006

Region	County	Gonorrhea	
		Cases	Rate
ALBANY	ALBANY	331	112.4
	CLINTON	12	15.0
	COLUMBIA	26	41.2
	DELAWARE	2	4.2
	ESSEX	3	7.7
	FRANKLIN	5	9.8
	FULTON	8	14.5
	GREENE	7	14.5
	HAMILTON	0	0.0
	MONTGOMERY	4	8.0
	OTSEGO	9	14.6
	RENSSELAER	99	64.9
	SARATOGA	31	15.5
	SCHENECTADY	223	152.2
	SCHOHARIE	1	3.2
	WARREN	9	14.2
	WASHINGTON	7	11.5
	ALBANY AREA TOTAL	777	53.5
BUFFALO	ALLEGANY	6	12.0
	CATTARAGUS	20	23.8
	CHAUTAUQUA	59	42.2
	ERIE	1,791	188.5
	GENESEE	25	41.4
	NIAGARA	277	126.0
	ORLEANS	17	38.5
	WYOMING	10	23.0
		BUFFALO AREA TOTAL	2,205
ROCHESTER	CHEMUNG	59	64.8
	LIVINGSTON	5	7.8
	MONROE	1,367	185.9
	ONTARIO	36	35.9
	SCHUYLER	0	0.0
	SENECA	5	15.0
	STEUBEN	12	12.2
	WAYNE	32	34.1
	YATES	6	24.4
	ROCHESTER AREA TOTAL	1,522	120.7
SYRACUSE	BROOME	120	59.8
	CAYUGA	26	31.7
	CHENANGO	4	7.8
	CORTLAND	7	14.4
	HERKIMER	6	9.3
	JEFFERSON	66	59.1
	LEWIS	3	11.1
	MADISON	9	13.0
	ONEIDA	79	33.6
	ONONDAGA	621	135.5
	OSWEGO	18	14.7

Table 7. Gonorrhea-- Reported cases and rates per 100,000 by region and county: New York State, 2006

Region	Gonorrhea		
	County	Cases	Rate
	ST. LAWRENCE	14	12.5
	TIOGA	9	17.4
	TOMPKINS	19	19.7
	SYRACUSE AREA TOTAL	1,001	57.8
METROPOLITAN	DUTCHESS	122	43.5
	NASSAU	405	30.3
	ORANGE	141	41.3
	PUTNAM	12	12.5
	ROCKLAND	37	12.9
	SUFFOLK	396	27.9
	SULLIVAN	51	69.0
	ULSTER	61	34.3
	WESTCHESTER	430	46.6
	METRO NY AREA TOTAL	1,655	33.5
UPSTATE NY	TOTAL	7,160	65.3
NEW YORK CITY	BRONX	2,135	160.2
	KINGS	3,871	157.0
	NEW YORK	2,405	156.5
	QUEENS	1,719	77.1
	RICHMOND	169	38.1
NEW YORK CITY	TOTAL	10,299	128.6
NEW YORK STATE	TOTAL	17,459	92.0

Table 8. Gonorrhea-- Reported cases and rates per 100,000 by age and sex: New York State, 2006

Area	Age Group	Gonorrhea					
		Male		Female		Total	
		Cases	Rate	Cases	Rate	Cases	Rate
UPSTATE NY	0-9	3	0.4	2	0.3	5	0.3
	10-14	11	2.7	73	18.8	84	10.5
	15-19	600	153.8	1,355	370.6	1,955	258.7
	20-24	945	278.1	1,251	393.7	2,197	334.1
	25-29	585	190.1	595	192.3	1,180	191.2
	30-34	381	100.8	268	69.7	649	85.1
	35-39	248	55.0	175	37.6	423	46.2
	40-44	200	43.7	100	21.7	300	32.7
	45-49	137	34.3	51	12.4	188	23.1
	50-54	75	21.2	25	6.7	100	13.8
	55+	60	18.6	17	4.0	78	10.4
	TOTAL	3,245	60.7	3,913	69.7	7,160	65.3
NEW YORK CITY	0-9	3	0.5	7	1.3	10	0.9
	10-14	21	7.6	63	24.2	84	15.7
	15-19	782	299.6	1,439	574.4	2,221	434.2
	20-24	1,508	531.6	1,348	442.4	2,856	485.4
	25-29	1,214	379.2	730	208.7	1,945	290.3
	30-34	757	229.4	412	118.3	1,169	172.4
	35-39	575	175.4	227	65.9	802	119.3
	40-44	440	148.3	145	44.6	585	94.1
	45-49	228	89.8	88	30.8	316	58.6
	50-54	103	47.2	35	13.5	138	28.9
	55+	67	34.1	40	13.9	107	22.1
	TOTAL	5,731	151.4	4,566	108.1	10,299	128.6
NEW YORK STATE	0-9	6	0.5	9	0.7	15	0.6
	10-14	32	4.7	136	21.0	168	12.6
	15-19	1,382	212.2	2,794	453.4	4,176	329.5
	20-24	2,453	393.4	2,599	417.5	5,053	405.5
	25-29	1,799	286.5	1,325	201.0	3,125	242.8
	30-34	1,138	160.8	680	92.8	1,818	126.2
	35-39	823	105.7	402	49.6	1,225	77.1
	40-44	640	84.9	245	31.2	885	57.5
	45-49	365	55.8	139	19.9	504	37.3
	50-54	178	31.1	60	9.5	238	19.8
	55+	127	24.5	57	8.0	185	15.0
	TOTAL	8,976	98.3	8,479	86.1	17,459	92.0

Table 9.1. Gonorrhea -- Men -- Reported cases and rates per 100,000 by age and county: New York State, 2006

County	Gonorrhea -- Men																											
	Age Group																											
	0-9		10-14		15-19		20-24		25-29		30-34		35-39		40-44		45-49		50-54		55+		Total					
Cases	Rate	Cases	Rate	Cases	Rate	Cases	Rate	Cases	Rate	Cases	Rate	Cases	Rate	Cases	Rate	Cases	Rate	Cases	Rate	Cases	Rate	Cases	Rate	Cases	Rate			
ALBANY					25	230.5	42	373.0	43	470.2	29	284.8	12	105.7	12	107.3	8	75.2	2	20.5	4	50.3	177	125.6				
CLINTON					1	31.1	2	53.6															3	7.3				
COLUMBIA					1	40.4	2	146.4	1	65.1	1	51.7											5	15.9				
DELAWARE									1	96.4					1	56.1							2	8.5				
ESSEX							2	190.5															2	9.9				
FULTON					1	44.7	1	70.0			1	53.5									1	59.1	4	14.7				
GREENE	1	34.5	1	56.6					1	78.6													3	12.0				
MONTGOMERY									1	77.3	1	66.5											2	8.4				
OTSEGO					3	101.2	1	36.6					1	54.3									5	16.8				
RENSSELAER					7	116.5	13	234.2	7	155.7	4	80.0	5	83.3	1	16.0					1	19.5			38	50.9		
SARATOGA					2	29.9	1	17.9					5	55.8	1	11.5	1	13.2	1	13.9					11	11.1		
SCHENECTADY					10	215.8	44	1070.6	19	484.0	14	295.3	20	335.7	12	210.4	8	150.4	7	146.8	1	21.8			135	191.3		
WARREN					1	46.8	1	60.9	2	126.2													4	13.0				
WASHINGTON									1	51.0					1	37.8							2	6.4				
ALBANY AREA TOTAL	1	1.1	1	2.0	51	100.7	109	240.7	76	192.6	50	107.1	43	78.7	28	50.6	17	33.5	11	23.9	6	14.3	393	58.8				
ALLEGANY					1	36.9	2	77.0					2	116.2									5	20.0				
CATTARAGUS					4	114.3	5	197.1	1	47.2													10	24.4				
CHAUTAUQUA					8	140.4	7	146.0	2	54.6	2	48.4			1	18.3			1	23.0					21	30.9		
ERIE			7	19.9	177	548.9	226	780.3	145	549.0	91	290.4	48	133.3	49	127.3	40	117.5	10	34.9	15	54.9			808	178.0		
GENESEE					1	41.7	7	449.3							3	121.2			2	104.9			13	43.6				
NIAGARA					23	291.6	27	449.4	19	328.3	15	227.5	5	56.4	3	31.9	6	72.8	3	43.0	4	62.5			105	99.0		
ORLEANS					2	117.1	2	165.8			1	62.3			1	55.7					2	165.0	8	36.5				
WYOMING					1	60.9	1	68.0	1	52.5													3	12.7				
BUFFALO AREA TOTAL			7	11.7	217	375.5	277	563.8	168	380.1	109	211.1	55	89.0	57	87.8	46	79.3	16	32.6	21	45.0	973	126.5				
CHEMUNG					6	183.5	11	365.4	8	304.5	2	61.5	2	53.7							1	38.5	30	66.5				
LIVINGSTON															1	33.3					1	55.8	2	6.2				
MONROE					145	536.6	175	715.7	117	537.1	78	311.8	52	182.6	46	156.9	29	110.5	16	69.3	10	46.4			668	188.4		
ONTARIO					2	58.7	5	174.5	3	117.2			2	49.2	1	23.4	1	25.3	3	83.1					17	34.7		
SENECA							1	95.3							1	74.1					1	96.1	3	18.1				
STEUBEN							2	81.7	1	39.1	1	32.8			1	25.1							5	10.3				
WAYNE					3	85.4	5	233.6	1	41.3	4	118.4							1	31.2			14	30.2				
YATES							1	134.6															1	8.3				

Table 9.1. Gonorrhea -- Men -- Reported cases and rates per 100,000 by age and county: New York State, 2006

County	Gonorrhea -- Men																							
	Age Group																							
	0-9		10-14		15-19		20-24		25-29		30-34		35-39		40-44		45-49		50-54		55+		Total	
	Cases	Rate	Cases	Rate	Cases	Rate	Cases	Rate	Cases	Rate	Cases	Rate	Cases	Rate	Cases	Rate	Cases	Rate	Cases	Rate	Cases	Rate	Cases	Rate
ROCHESTER AREA TOTAL					156	340.0	200	504.7	130	368.8	85	202.9	56	114.1	49	96.2	31	68.0	20	49.9	13	35.2	740	122.5
BROOME					3	38.8	23	313.8	15	293.1	6	101.9	5	65.5	2	24.8	4	56.8	3	47.8	3	50.5	64	66.2
CAYUGA					2	63.8	3	121.1	1	38.6	3	93.3	1	27.1	1	28.1			1	37.2			12	29.0
CHENANGO									2	151.5	1	62.5											3	11.9
CORTLAND					1	46.9							1	56.9	1	55.7							3	12.7
HERKIMER							1	52.2	1	59.9	2	107.2											4	12.9
JEFFERSON					4	93.2	16	262.6	3	62.8	4	83.7	1	19.5			1	28.1					29	50.3
LEWIS							1	140.1															1	7.5
MADISON					1	29.8	2	79.5															3	8.8
ONEIDA					8	92.7	12	160.2	5	71.1	3	35.5	5	49.9							1	13.8	34	29.1
ONONDAGA			1	5.6	58	355.1	68	467.4	55	434.1	30	191.9	20	112.8	12	65.7	13	79.5	7	51.3	6	49.4	270	123.3
OSWEGO					2	38.8	2	43.9															4	6.6
ST. LAWRENCE					2	36.4	2	34.7			1	25.5									1	32.2	6	10.5
TIOGA									1	81.1	1	63.9	1	45.3	1	43.0							4	15.6
TOMPKINS					1	16.0	5	59.4	3	82.6	2	66.4			1	31.3							12	25.2
SYRACUSE AREA TOTAL			1	1.5	82	117.1	135	202.6	86	170.4	53	90.5	34	49.4	18	26.0	18	29.2	11	20.7	11	22.5	449	52.8
DUTCHESS					4	37.6	21	230.0	14	180.8	7	69.9	4	31.8	4	30.5	2	18.4	3	31.5			59	42.0
NASSAU	1	1.1			15	35.6	64	180.0	36	105.8	14	31.7	18	33.7	12	21.5	10	20.1			1	2.6	171	26.6
ORANGE					7	52.2	19	171.1	8	87.2	11	91.4	4	25.7	3	20.2	1	7.9	4	36.3	1	11.1	58	34.0
PUTNAM			1	27.7	2	62.9	2	88.9	1	40.4					1	21.0							7	14.7
ROCKLAND					4	39.1	1	12.4	3	40.4	4	42.1					1	10.1			1	11.4	14	10.0
SUFFOLK	1	0.9			19	41.8	31	79.2	28	68.7	24	45.1	15	23.5	11	17.6	6	11.9	5	11.0	2	4.8	142	20.4
SULLIVAN					2	71.3	12	667.4	2	111.2	2	74.6	1	31.9	1	30.4	1	34.6					21	55.4
ULSTER					4	65.0	8	146.4	4	77.2	3	46.4	1	12.4	3	37.4	2	28.4			1	18.0	26	29.3
WESTCHESTER			1	3.0	37	135.6	66	293.3	29	110.5	19	57.4	17	44.1	13	33.4	2	6.2	5	17.0	3	11.0	192	43.6
METRO NY AREA TOTAL	2	0.5	2	1.1	94	58.3	224	165.9	125	92.7	84	48.1	60	28.4	48	22.6	25	13.9	17	10.5	9	6.2	690	28.7
BRONX	1	0.9	5	8.8	195	379.9	331	697.8	248	552.1	140	288.5	99	198.1	70	157.6	45	122.7	19	60.6	13	45.9	1,170	189.3
KINGS	1	0.5	11	11.6	311	349.0	549	615.4	379	413.8	247	276.9	162	179.2	126	146.1	65	86.4	28	42.7	17	30.3	1,906	165.3
NEW YORK	1	1.3	2	5.6	129	357.9	335	617.2	358	450.5	246	297.6	231	317.5	192	326.6	90	173.3	42	95.0	28	66.6	1,664	228.6
QUEENS			3	4.2	135	193.5	280	353.3	208	231.4	114	122.6	75	77.9	51	57.2	25	33.7	13	20.7	9	15.8	922	86.2
RICHMOND					12	81.3	13	96.4	21	147.0	10	60.2	8	43.6	1	5.5	3	18.9	1	6.9			69	32.1
NYC AREA TOTAL	3	0.5	21	7.6	782	299.6	1,508	531.6	1,214	379.2	757	229.4	575	175.4	440	148.3	228	89.8	103	47.2	67	34.1	5,731	151.4

Table 9.2. Gonorrhea -- Women -- Reported cases and rates per 100,000 by age and county: New York State, 2006

County	Gonorrhea -- Women																							
	Age Group																							
	0-9		10-14		15-19		20-24		25-29		30-34		35-39		40-44		45-49		50-54		55+		Total	
Cases	Rate	Cases	Rate	Cases	Rate	Cases	Rate	Cases	Rate	Cases	Rate	Cases	Rate	Cases	Rate	Cases	Rate	Cases	Rate	Cases	Rate	Cases	Rate	
ALBANY	1	5.7	2	22.2	47	433.4	57	501.5	27	283.2	8	76.7	8	67.0	4	33.3							154	100.3
CLINTON					5	152.7	1	32.2	1	45.6					1	32.4	1	37.3					9	23.1
COLUMBIA					3	163.5	11	885.7	6	382.9							1	40.8					21	66.2
ESSEX															1	67.1							1	5.4
FRANKLIN					1	62.3	1	81.7	1	83.7	1	66.4			1	52.2							5	21.8
FULTON							1	74.3	3	197.0													4	14.4
GREENE							3	314.1					1	57.8									4	17.2
MONTGOMERY					1	63.4	1	74.0															2	7.7
OTSEGO					3	96.1	1	34.4															4	12.5
RENSSELAER					20	381.0	23	483.5	14	291.1	3	57.3	1	15.3									61	78.3
SARATOGA					6	92.4	8	155.9	1	16.2			5	54.3									20	19.6
SCHENECTADY					19	439.3	26	653.1	25	596.4	9	180.4	3	48.2	6	100.0							88	115.8
SCHOHARIE							1	129.4															1	6.3
WARREN					1	47.5	3	193.8			1	46.2											5	15.3
WASHINGTON							2	144.7	1	64.4			2	87.3									5	16.8
ALBANY AREA TOTAL	1	1.2	2	4.2	106	221.1	139	331.8	79	196.5	22	46.2	20	35.1	13	22.9	2	3.8					384	54.2
ALLEGANY							1	44.5															1	4.0
CATTARAGUS					2	58.3	6	229.2							2	59.2							10	23.3
CHAUTAUQUA			1	20.4	20	347.2	11	238.6	2	53.9	2	48.5	1	20.7					1	22.7			38	53.0
ERIE			29	89.0	379	1213.7	326	1137.4	123	436.8	55	168.8	31	82.8	16	39.8	12	33.4	6	19.3	3	7.9	981	197.7
GENESEE			1	41.1	3	144.7	5	343.4	2	123.7			1	40.9									12	39.3
NIAGARA			6	74.4	80	1037.2	39	618.0	20	326.4	13	178.4	4	44.5	1	10.5	3	36.3	4	55.2	2	23.1	172	151.1
ORLEANS					4	251.3	4	333.3			1	57.7											9	40.4
WYOMING					3	207.8	2	212.8	2	181.3													7	35.2
BUFFALO AREA TOTAL			37	65.5	491	881.3	394	820.1	149	328.4	71	133.7	37	59.4	19	28.5	15	25.3	11	21.4	5	7.9	1,230	149.6
CHEMUNG					10	321.0	12	443.5	3	129.0	2	72.3			1	26.6	1	29.7					29	63.1
LIVINGSTON							2	65.3									1	43.3					3	9.4
MONROE	1	2.0	22	81.7	263	1050.7	201	851.7	101	435.0	48	180.5	28	90.9	21	68.1	10	35.4	1	4.0	3	10.3	699	183.5
ONTARIO					10	288.4	2	72.1	5	192.2	1	30.2			1	23.3							19	37.0
SENECA					1	93.5							1	77.8									2	11.9
STEUBEN					4	114.4			3	110.5													7	13.9
WAYNE					6	198.7	7	324.5	2	78.7			2	48.1	1	24.4							18	38.0
YATES					2	173.8			1	170.4			2	223.0									5	39.7

Table 9.2. Gonorrhea -- Women -- Reported cases and rates per 100,000 by age and county: New York State, 2006

County	Gonorrhea -- Women																							
	Age Group																							
	0-9		10-14		15-19		20-24		25-29		30-34		35-39		40-44		45-49		50-54		55+		Total	
Cases	Rate	Cases	Rate	Cases	Rate	Cases	Rate	Cases	Rate	Cases	Rate	Cases	Rate	Cases	Rate	Cases	Rate	Cases	Rate	Cases	Rate	Cases	Rate	
ROCHESTER AREA TOTAL	1	1.2	22	48.0	296	679.1	224	587.8	115	315.3	51	118.6	33	64.2	24	46.4	12	25.3	1	2.4	3	6.2	782	122.7
BROOME					15	199.5	17	236.9	8	150.4	10	160.3	2	26.0	2	25.0	1	14.1			1	11.8	56	53.9
CAYUGA					2	66.1	4	192.8	4	197.7	1	38.4	1	30.9					2	79.4			14	34.5
CHENANGO							1	84.2															1	3.8
CORTLAND					2	83.6			1	78.2	1	63.6											4	16.0
HERKIMER							1	58.0					1	39.9									2	6.0
JEFFERSON					14	374.2	13	336.1	5	136.8	4	101.7	1	22.3									37	68.4
LEWIS									1	137.2	1	121.1											2	14.7
MADISON					4	122.7	2	81.9															6	17.0
ONEIDA					13	162.6	17	264.9	9	145.0	4	54.3	1	11.5	1	10.9							45	38.0
ONONDAGA			7	41.5	138	834.5	105	678.3	48	339.4	25	154.3	16	81.0	8	43.1	3	17.2	1	6.8			351	146.7
OSWEGO					5	102.9	5	106.2	3	88.4	1	23.8											14	22.6
ST. LAWRENCE					2	41.0	5	114.4	1	34.1													8	14.5
TIOGA					2	116.4	2	179.2			1	60.6											5	19.2
TOMPKINS					2	33.8	4	50.0											1	36.4			7	14.3
SYRACUSE AREA TOTAL			7	11.3	199	297.1	176	284.1	80	163.2	48	84.3	22	32.1	11	16.1	4	6.4	4	7.3	1	1.5	552	62.6
DUTCHESS					14	143.5	25	292.9	14	198.4	3	30.8			5	41.7			1	10.9	1	10.1	63	45.1
NASSAU					43	108.9	86	262.6	43	121.2	18	38.4	23	39.6	7	11.7	5	9.5	4	8.3	5	9.5	234	33.8
ORANGE					16	135.5	38	427.8	14	155.8	5	40.7	4	25.6	4	28.2	1	7.9			1	8.8	83	48.6
PUTNAM					2	75.5			2	85.2	1	27.5											5	10.4
ROCKLAND					7	76.0	10	135.3	2	26.5	3	28.8	1	8.2									23	15.7
SUFFOLK			1	2.0	61	144.5	70	192.0	54	129.8	29	53.4	20	29.6	10	16.3	7	13.5	2	4.0			254	35.0
SULLIVAN					11	480.8	8	448.7	7	420.4	1	41.9			2	67.6	1	38.1					30	83.1
ULSTER					9	158.5	15	283.3	5	110.5			2	26.1	1	13.4	3	43.0					35	39.3
WESTCHESTER			4	12.9	100	387.4	66	284.2	31	112.8	16	44.4	13	31.1	4	9.7	1	2.8	2	6.3	1	2.6	238	49.2
METRO NY AREA TOTAL			5	2.9	263	176.6	318	252.0	172	125.8	76	41.8	63	28.2	33	15.4	18	9.5	9	5.2	8	4.2	965	38.1
BRONX	4	3.5	14	26.4	337	690.2	293	556.0	151	284.0	78	139.6	31	52.9	29	54.4	15	34.5	3	7.8	4	8.9	965	135.0
KINGS	1	0.6	30	33.5	594	697.2	588	616.9	320	313.7	185	183.9	105	103.2	65	65.3	37	42.2	18	22.6	16	19.0	1,965	149.8
NEW YORK	1	1.4	3	9.0	228	611.2	205	311.5	138	155.5	61	75.0	43	62.5	27	44.8	9	15.9	6	11.3	9	14.7	741	91.6
QUEENS	1	0.7	15	21.7	239	367.5	232	297.2	109	119.9	83	89.2	45	46.5	20	21.6	26	32.3	7	9.7	9	11.0	795	68.6
RICHMOND			1	6.5	41	289.9	30	233.9	12	80.3	5	28.9	3	16.1	4	20.7	1	5.8	1	6.1	2	12.1	100	43.7
NYC AREA TOTAL	7	1.3	63	24.2	1,439	574.4	1,348	442.4	730	208.7	412	118.3	227	65.9	145	44.6	88	30.8	35	13.5	40	13.9	4,566	108.1

Table 10. Chlamydia-- Reported cases and rates per 100,000: United States, New York City, and New York State exclusive of New York City, 2001-2006

Year	Chlamydia					
	United States		NYC		Upstate NY	
	Cases	Rate	Cases	Rate	Cases	Rate
2001	783,242	274.5	29,649	398.2	16,753	155.5
2002	834,555	289.4	33,276	415.5	18,085	164.9
2003	877,478	301.7	34,779	434.3	21,854	199.2
2004	929,462	316.5	34,189	426.9	24,719	225.4
2005	976,445	329.4	39,215	489.7	25,313	230.8
2006	1,030,911	347.8	41,236	514.9	27,489	250.6

Table 11. Chlamydia-- Reported cases and rates per 100,000 by region and county: New York State, 2006

Region	County	Chlamydia	
		Cases	Rate
ALBANY	ALBANY	982	333.4
	CLINTON	92	115.2
	COLUMBIA	98	155.3
	DELAWARE	64	133.2
	ESSEX	24	61.8
	FRANKLIN	52	101.7
	FULTON	81	147.1
	GREENE	69	143.2
	HAMILTON	1	18.6
	MONTGOMERY	79	158.9
	OTSEGO	123	199.4
	RENSSELAER	356	233.4
	SARATOGA	247	123.1
	SCHENECTADY	437	298.2
	SCHOHARIE	26	82.3
	WARREN	106	167.4
WASHINGTON	103	168.7	
	ALBANY AREA TOTAL	2,940	202.6
BUFFALO	ALLEGANY	65	130.2
	CATTARAGUS	85	101.2
	CHAUTAUQUA	317	226.8
	ERIE	4,199	441.9
	GENESEE	111	183.9
	NIAGARA	793	360.7
	ORLEANS	91	206.0
	WYOMING	33	76.0
		BUFFALO AREA TOTAL	5,694
ROCHESTER	CHEMUNG	258	283.3
	LIVINGSTON	105	163.2
	MONROE	3,624	492.8
	ONTARIO	169	168.6
	SCHUYLER	19	98.8
	SENECA	71	212.9
	STEUBEN	131	132.7
	WAYNE	179	190.9
	YATES	35	142.2
	ROCHESTER AREA TOTAL	4,591	364.2
SYRACUSE	BROOME	484	241.4
	CAYUGA	163	198.9
	CHENANGO	42	81.7
	CORTLAND	89	183.1
	HERKIMER	103	159.9
	JEFFERSON	408	365.1
	LEWIS	27	100.2
	MADISON	91	131.0
	ONEIDA	600	254.8
	ONONDAGA	2,337	509.9
OSWEGO	184	150.4	

Table 11. Chlamydia-- Reported cases and rates per 100,000 by region and county: New York State, 2006

Region	Chlamydia		
	County	Cases	Rate
	ST. LAWRENCE	174	155.5
	TIOGA	56	108.1
	TOMPKINS	171	177.2
	SYRACUSE AREA TOTAL	4,929	284.7
METROPOLITAN	DUTCHESS	462	164.9
	NASSAU	2,214	165.9
	ORANGE	605	177.2
	PUTNAM	45	47.0
	ROCKLAND	461	160.8
	SUFFOLK	2,827	199.2
	SULLIVAN	213	288.0
	ULSTER	375	211.0
	WESTCHESTER	2,133	231.0
	METRO NY AREA TOTAL	9,335	189.2
UPSTATE NY	TOTAL	27,489	250.6
NEW YORK CITY	BRONX	10,494	787.5
	KINGS	13,916	564.5
	NEW YORK	7,997	520.2
	QUEENS	8,018	359.7
	RICHMOND	811	182.8
NEW YORK CITY	TOTAL	41,236	514.9
NEW YORK STATE	TOTAL	68,725	362.2

Table 12. Chlamydia-- Reported cases and rates per 100,000 by age and sex: New York State, 2006

Area	Age Group	Chlamydia					
		Male		Female		Total	
		Cases	Rate	Cases	Rate	Cases	Rate
UPSTATE NY	0-9	9	1.2	11	1.5	20	1.3
	10-14	33	8.0	352	90.7	385	48.1
	15-19	1,799	461.1	7,971	2179.9	9,771	1292.8
	20-24	2,673	786.6	7,331	2306.9	10,004	1521.3
	25-29	1,366	443.8	2,717	878.0	4,083	661.5
	30-34	612	161.9	993	258.4	1,605	210.6
	35-39	327	72.6	486	104.5	813	88.8
	40-44	189	41.3	213	46.2	402	43.8
	45-49	98	24.5	112	27.2	210	25.9
	50-54	51	14.4	39	10.5	90	12.4
	55+	46	14.3	56	13.2	102	13.6
	TOTAL	7,205	134.7	20,283	361.0	27,489	250.6
NEW YORK CITY	0-9	15	2.7	20	3.7	35	3.2
	10-14	66	24.0	354	135.9	420	78.4
	15-19	2,773	1062.4	9,380	3744.3	12,155	2376.2
	20-24	4,278	1508.1	9,459	3104.2	13,737	2334.7
	25-29	2,672	834.6	4,543	1298.8	7,215	1077.0
	30-34	1,415	428.8	2,024	581.4	3,439	507.1
	35-39	728	222.1	1,042	302.3	1,770	263.2
	40-44	462	155.7	576	177.1	1,038	166.9
	45-49	227	89.4	312	109.3	539	99.9
	50-54	95	43.5	169	65.1	264	55.2
	55+	75	38.2	210	72.7	285	58.7
	TOTAL	12,945	342.1	28,288	669.7	41,236	514.9
NEW YORK STATE	0-9	24	1.8	31	2.5	55	2.1
	10-14	99	14.4	706	108.8	805	60.3
	15-19	4,572	702.1	17,351	2815.9	21,926	1730.1
	20-24	6,951	1114.8	16,790	2697.2	23,741	1905.4
	25-29	4,038	643.0	7,260	1101.3	11,298	877.7
	30-34	2,027	286.4	3,017	411.9	5,044	350.2
	35-39	1,055	135.5	1,528	188.7	2,583	162.6
	40-44	651	86.3	789	100.4	1,440	93.5
	45-49	325	49.7	424	60.8	749	55.4
	50-54	146	25.5	208	33.0	354	29.4
	55+	121	23.3	266	37.2	387	31.4
	TOTAL	20,150	220.6	48,571	493.5	68,725	362.2

Table 13.1. Chlamydia -- Men -- Reported cases and rates per 100,000 by age and county: New York State, 2006

County	Chlamydia -- Men																							
	Age Group																							
	0-9		10-14		15-19		20-24		25-29		30-34		35-39		40-44		45-49		50-54		55+		Total	
Cases	Rate	Cases	Rate	Cases	Rate	Cases	Rate	Cases	Rate	Cases	Rate	Cases	Rate	Cases	Rate	Cases	Rate	Cases	Rate	Cases	Rate	Cases	Rate	
ALBANY					68	626.8	101	896.9	50	546.7	26	255.4	10	88.1	5	44.7	7	65.8			4	50.3	271	192.3
CLINTON					7	217.4	10	268.2	2	72.0	2	61.7			1	27.9			1	38.6			23	56.1
COLUMBIA					9	363.2	12	878.5	1	65.1	2	103.4	1	40.7	2	76.5			1	43.7			28	89.2
DELAWARE					6	292.7	8	656.3	2	192.9													16	67.7
ESSEX									1	71.7													1	5.0
FRANKLIN					3	152.1	1	40.7	4	179.5	2	74.6											10	35.4
FULTON					4	178.8	4	279.9	3	190.8	3	160.5											14	51.3
GREENE					8	383.0	8	362.6	2	157.2	2	138.4	1	49.5			1	55.2			1	62.6	23	92.1
MONTGOMERY							8	637.5	2	154.6	3	199.6	2	121.4									15	63.1
OTSEGO					12	404.7	14	512.4	1	70.0			1	54.3	1	42.5			1	50.2			30	100.7
RENSSELAER					25	416.1	31	558.6	23	511.7	5	99.9	2	33.3									87	116.6
SARATOGA					10	149.5	31	556.4	12	198.6	4	51.3	1	11.2	1	11.5							59	59.8
SCHENECTADY			1	18.3	21	453.2	28	681.3	23	585.8	11	232.0	3	50.4	3	52.6	3	56.4	2	42.0			95	134.6
SCHOHARIE					1	66.8	1	96.2															2	12.8
WARREN					5	234.0	7	426.0	2	126.2	1	47.6	2	80.0	1	39.4							18	58.7
WASHINGTON					6	262.7	3	139.1	5	255.0					1	37.8							15	47.9
ALBANY AREA TOTAL			1	1.9	185	341.8	267	547.4	133	313.1	61	121.2	23	39.3	15	25.3	11	20.4	5	10.2	5	11.3	707	99.2
ALLEGANY					3	110.6	16	616.3	1	82.7			1	58.1			1	58.2					22	88.2
CATTARAGUS					10	285.8	9	354.7	3	141.6					2	58.2			1	36.1			25	61.0
CHAUTAUQUA					23	403.6	18	375.4	7	191.3	4	96.8	1	19.6	1	18.3			1	23.0			55	80.9
ERIE	3	4.8	13	36.9	319	989.3	375	1294.8	182	689.1	91	290.4	31	86.1	19	49.4	21	61.7	4	14.0	8	29.3	1,067	235.0
GENESEE					5	208.6	12	770.2	5	296.2	3	141.2	1	37.9	2	80.8							28	93.9
NIAGARA	1	6.8			42	532.5	67	1115.2	31	535.7	10	151.7	5	56.4	5	53.1					1	15.6	162	152.8
ORLEANS					10	585.5	4	331.7	4	281.3					1	55.7			1	70.3			20	91.3
WYOMING	1	37			2	121.8	5	340.1	1	52.5													9	38.2
BUFFALO AREA TOTAL	5	4.7	13	21.8	414	716.4	506	1029.9	234	529.4	108	209.2	39	63.1	30	46.2	22	37.9	7	14.3	9	19.3	1,388	180.4
CHEMUNG					23	703.4	29	963.5	14	532.9	2	61.5	4	107.3	2	52.1	2	59.7					76	168.4
LIVINGSTON					3	104.2	18	616.6	4	225.1	1	44.6	1	35.1	2	66.5							29	89.7
MONROE			8	27.6	310	1147.3	372	1521.3	220	1010.0	102	407.7	70	245.9	37	126.2	14	53.3	11	47.7	8	37.2	1,152	325.0
ONTARIO					7	205.6	8	279.1	7	273.4	6	190.8	3	73.8			2	50.6					33	67.5
SCHUYLER							2	383.1	2	418.4													4	41.4
SENECA					6	558.7	14	1334.6	5	485.9			3	235.5	1	68.5	1	74.1	1	94.5			31	187.4
STEUBEN					4	107.6	15	612.5	6	234.5	3	98.4	1	26.7									29	60.0
WAYNE					14	398.5	14	654.2	7	288.9	4	118.4	2	49.1	2	48.0	1	27.8					44	94.8

Table 13.1. Chlamydia -- Men -- Reported cases and rates per 100,000 by age and county: New York State, 2006

		Chlamydia -- Men																								
		Age Group																								
		0-9		10-14		15-19		20-24		25-29		30-34		35-39		40-44		45-49		50-54		55+		Total		
County		Cases	Rate	Cases	Rate	Cases	Rate	Cases	Rate	Cases	Rate	Cases	Rate	Cases	Rate	Cases	Rate	Cases	Rate	Cases	Rate	Cases	Rate	Cases	Rate	
YATES						3	301.2			2	409.8			1	112.1									6	49.9	
ROCHESTER AREA TOTAL				8	16.1	370	791.4	472	1175.6	267	747.4	118	277.6	85	170.7	44	85.1	20	43.2	12	29.4	8	21.2	1,404	228.7	
BROOME		1	8.0			19	245.7	74	1009.7	26	508.1	22	373.6	3	39.3	4	49.6			1	15.9			150	155.1	
CAYUGA						14	446.4	19	766.7	8	308.6	4	124.4			2	56.2							47	113.5	
CHENANGO						2	102.8	4	329.8			1	62.5	2	98.0									9	35.6	
CORTLAND						7	328.3	8	338.6	1	74.0	4	254.6	1	56.9			1	61.0					22	93.4	
HERKIMER						1	43.0	8	417.8	3	179.7	1	53.6											13	41.8	
JEFFERSON				1	24.5	17	395.9	66	1083.0	22	460.4	4	83.7	4	77.9	2	48.0								116	201.2
LEWIS								3	420.2	4	572.2	1	118.3											8	60.0	
MADISON						11	327.3	9	357.7	3	178.8	1	46.1	3	110.2									27	79.1	
ONEIDA				2	21.5	36	417.3	59	787.6	31	440.9	15	177.6	5	49.9	1	10.5	3	35.6			1	13.8	153	130.8	
ONONDAGA				3	16.7	187	1145.0	231	1587.6	127	1002.4	52	332.7	23	129.7	16	87.5	6	36.7	4	29.3	4	32.9	653	298.2	
OSWEGO						3	58.2	14	307.4	8	243.3			2	39.8								1	30.8	28	46.4
ST. LAWRENCE						10	182.0	21	364.6	6	175.8	1	25.5			1	23.1							39	68.5	
TIOGA						2	93.9	8	647.2	4	324.4	1	63.9											15	58.4	
TOMPKINS						12	191.8	28	332.7	7	192.8	4	132.8	3	108.7	3	94.0								57	119.7
SYRACUSE AREA TOTAL		1	0.9	6	9.1	321	458.4	552	828.5	250	495.4	111	189.5	46	66.9	29	41.9	10	16.2	5	9.4	6	12.3	1,337	157.3	
DUTCHESS						23	216.1	56	613.4	28	361.7	9	89.8	2	15.9			2	18.4	2	21.0			122	86.9	
NASSAU				1	2.1	125	296.6	220	618.7	132	387.8	74	167.4	35	65.6	18	32.2	5	10.1	7	15.8	4	10.3	621	96.7	
ORANGE		1	3.5			24	179.0	54	486.4	27	294.2	11	91.4	12	77.1	2	13.4	3	23.8	3	27.2			137	80.2	
PUTNAM						3	94.3	2	88.9	1	40.4					1	21.0							7	14.7	
ROCKLAND						29	283.5	47	580.8	35	471.7	15	157.9	5	42.9	1	9.1	1	10.1	1	10.5	2	22.9	136	97.2	
SUFFOLK		1	0.9	1	1.9	120	264.2	243	620.7	147	360.8	57	107.1	40	62.6	23	36.9	13	25.8	8	17.5	6	14.5	659	94.9	
SULLIVAN						36	1282.5	13	723.0	6	333.5	3	111.9	2	63.8	5	152.0					1	41.3	66	174.3	
ULSTER						20	324.9	35	640.3	15	289.7	10	154.7	6	74.6	9	112.2	6	85.3	1	15.8	2	35.9	104	117.3	
WESTCHESTER		1	1.5	3	9.1	129	472.9	206	915.5	91	346.7	35	105.8	32	82.9	12	30.8	5	15.5			3	11.0	517	117.5	
METRO NY AREA TOTAL		3	0.8	5	2.7	509	315.6	876	648.6	482	357.5	214	122.5	134	63.4	71	33.5	35	19.4	22	13.6	18	12.4	2,369	98.6	
BRONX		7	6.1	21	37.1	792	1543.0	1,281	2700.5	656	1460.5	332	684.3	146	292.1	77	173.3	50	136.3	18	57.4	15	52.9	3,440	556.7	
KINGS		6	3.2	23	24.3	710	796.7	1,210	1356.4	811	885.4	427	478.7	201	222.3	133	154.2	52	69.2	25	38.1	18	32.1	3,645	316.0	
NEW YORK				11	31.0	474	1315.2	813	1497.8	619	778.9	355	429.4	228	313.4	155	263.7	81	155.9	39	88.2	31	73.7	2,848	391.2	
QUEENS		2	1.4	9	12.6	749	1073.8	899	1134.2	550	611.9	283	304.4	145	150.6	89	99.8	39	52.5	11	17.6	10	17.6	2,806	262.2	
RICHMOND				2	11.6	48	325.2	75	556.3	36	252.0	18	108.4	8	43.6	8	44.3	5	31.5	2	13.8	1	7.6	206	95.9	
NYC AREA TOTAL		15	2.7	66	24.0	2,773	1062.4	4,278	1508.1	2,672	834.6	1,415	428.8	728	222.1	462	155.7	227	89.4	95	43.5	75	38.2	12,945	342.1	

Table 13.2. Chlamydia -- Women -- Reported cases and rates per 100,000 by age and county: New York State, 2006

Chlamydia -- Women																										
Age Group																										
		0-9		10-14		15-19		20-24		25-29		30-34		35-39		40-44		45-49		50-54		55+		Total		
County	Cases	Rate	Cases	Rate	Cases	Rate	Cases	Rate	Cases	Rate	Cases	Rate	Cases	Rate	Cases	Rate	Cases	Rate	Cases	Rate	Cases	Rate	Cases	Rate		
ALBANY			14	155.7	273	2517.5	257	2261.3	110	1153.6	36	345.0	13	108.8	7	58.2	1	8.9							711	462.9
CLINTON					22	672.0	27	869.8	14	637.8	3	118.0	1	30.0	1	32.4	1	37.3							69	177.4
COLUMBIA			5	227.0	29	1580.4	19	1529.8	8	510.5	7	352.6	1	44.4	1	37.3									70	220.7
DELAWARE					19	1088.8	20	1798.6	5	481.7	3	225.7					1	56.9							48	196.6
ESSEX			2	136.9	11	960.7	9	1101.6	1	106.4															23	123.1
FRANKLIN					26	1620.9	10	817.0	5	418.4	1	66.4													42	183.3
FULTON			1	49.3	23	1360.1	31	2303.1	11	722.3											1	54.1			67	241.2
GREENE	1	37.1			18	1434.3	19	1989.5	3	259.7	4	265.4	1	57.8											46	198.2
HAMILTON							1	1219.5																1	37.4	
MONTGOMERY					19	1204.1	31	2292.9	6	447.4	5	320.5	2	107.8	1	52.7									64	246.6
OTSEGO					48	1537.0	33	1134.8	10	661.4	1	58.7	1	46.0											93	291.6
RENSSELAER			4	72.9	117	2229.0	90	1891.9	42	873.2	14	267.5	1	15.3	1	16.1									269	345.2
SARATOGA					84	1293.3	71	1383.2	22	356.6	8	100.3	1	10.9	1	11.5	1	12.4							188	184.4
SCHENECTADY			2	40.9	124	2867.1	128	3215.3	51	1216.6	19	380.8	9	144.6	5	83.4	2	36.0	1	20.9	1	16.8			342	450.1
SCHOHARIE					11	741.7	12	1552.4							1	86.1									24	151.0
WARREN					25	1186.5	40	2584.0	16	909.1			6	217.2	1	39.5									88	269.7
WASHINGTON					43	2233.8	33	2387.8	7	450.5	1	49.2	2	87.3			2	90.5							88	296.3
ALBANY AREA TOTAL	1	1.1	28	56.3	892	1789.6	831	1928.9	311	751.7	102	208.1	38	64.8	19	32.3	8	14.8	2	4.0	1	1.7	2,233	303.5		
ALLEGANY					18	727.9	19	845.6	4	351.2	2	141.5													43	172.1
CATTARAGUS			1	30.5	25	729.1	25	954.9	7	312.2	1	39.5							1	36.7					60	139.5
CHAUTAUQUA			5	102.0	128	2221.8	97	2103.7	16	431.5	11	266.6	3	62.1	1	17.4						1	16.9		262	365.3
ERIE	2	3.3	84	257.7	1,361	4358.5	1,093	3813.4	341	1211.0	127	389.9	56	149.6	22	54.8	18	50.1	7	22.6	19	49.8	3,131	631.0		
GENESEE			2	82.1	27	1302.5	38	2609.9	13	804.0	2	93.7			1	38.4									83	271.7
NIAGARA			22	272.9	282	3656.2	215	3406.8	77	1256.5	18	247.0	8	89.0	7	73.4	1	12.1	1	13.8					631	554.4
ORLEANS			1	57.9	33	2072.9	22	1833.3	11	862.1	3	173.1	1	48.2											71	319.0
WYOMING					5	346.3	17	1808.5	1	90.7			1	57.3											24	120.7
BUFFALO AREA TOTAL	2	2.0	115	203.7	1,879	3372.8	1,526	3176.2	470	1035.9	164	308.7	69	110.7	31	46.4	19	32.1	9	17.5	20	31.6	4,305	523.5		
CHEMUNG			4	121.0	69	2215.1	73	2697.7	23	989.2	10	361.3	2	57.9	1	26.6									182	396.2
LIVINGSTON					27	834.4	35	1142.3	7	473.9	5	254.5	1	38.7	1	39.0									76	237.5
MONROE			72	267.5	1,072	4282.7	813	3444.9	315	1356.6	94	353.4	63	204.6	23	74.6	15	53.1	3	11.9	2	6.9	2,472	649.1		
ONTARIO					51	1470.6	49	1765.8	13	499.8	15	452.6	5	115.6	2	46.6			1	27.4					136	265.1
SCHUYLER					3	465.8	9	2132.7	3	622.4															15	157.0
SENECA			1	76.4	16	1495.3	17	2213.5	3	298.5			2	155.6	1	75.4									40	238.1
STEUBEN			2	54.5	32	915.3	42	1777.4	11	405.0	10	318.9	4	102.8	1	25.6									102	202.6

Table 13.2. Chlamydia -- Women -- Reported cases and rates per 100,000 by age and county: New York State, 2006

Chlamydia -- Women																								
Age Group																								
County	0-9		10-14		15-19		20-24		25-29		30-34		35-39		40-44		45-49		50-54		55+		Total	
	Cases	Rate	Cases	Rate	Cases	Rate	Cases	Rate	Cases	Rate	Cases	Rate	Cases	Rate	Cases	Rate	Cases	Rate	Cases	Rate	Cases	Rate	Cases	Rate
WAYNE			3	80.6	54	1788.7	56	2596.2	9	354.1	7	203.2	5	120.3					1	31.4			135	285.1
YATES			1	110.1	10	868.8	14	2074.1	1	170.4	1	145.6	1	111.5							1	99.2	29	230.4
ROCHESTER AREA TOTAL			83	178.5	1,334	3016.1	1,108	2875.7	385	1041.8	142	325.7	83	159.3	29	55.2	15	31.1	5	11.6	3	6.1	3,187	492.8
BROOME					109	1449.9	140	1950.7	53	996.2	27	432.8	3	39.0	1	12.5	1	14.1					334	321.6
CAYUGA					40	1321.0	48	2313.3	16	790.9	10	383.9	1	30.9			1	33.5					116	286.1
CHENANGO					14	807.8	11	925.9	4	299.9	2	122.3	2	98.4									33	126.4
CORTLAND					36	1505.0	23	853.4	6	469.1	2	127.1											67	267.6
HERKIMER			1	40.7	34	1467.4	40	2318.8	5	287.7	6	304.3	2	79.7	2	79.2							90	270.2
JEFFERSON			4	98.9	98	2619.6	125	3231.6	42	1149.4	14	356.1	6	133.8	2	49.3					1	28.0	292	540.0
LEWIS					6	556.6	11	1573.7					1	92.6	1	88.5							19	139.5
MADISON					31	950.9	30	1228.5	1	58.7			1	36.2					1	44.6			64	181.3
ONEIDA			9	109.8	174	2176.4	167	2602.5	72	1159.8	12	162.8	6	69.0	5	54.5	1	12.2			1	10.0	447	377.1
ONONDAGA	3	9.6	35	207.4	726	4390.4	562	3630.5	227	1605.3	62	382.7	39	197.5	12	64.7	8	45.8	4	27.1	6	35.9	1,684	703.6
OSWEGO			1	20.9	69	1420.3	56	1190.0	20	589.4	6	142.8	1	19.5	2	40.0	1	22.5					156	251.6
ST. LAWRENCE			1	26.3	48	983.6	67	1533.5	15	511.8	4	117.1											135	245.4
TIOGA					13	756.7	19	1702.5	7	560.0	2	121.2											41	157.1
TOMPKINS					41	692.5	52	650.6	12	362.2	4	131.7	4	128.5	1	30.2							114	233.2
SYRACUSE AREA TOTAL	3	2.7	51	82.5	1,439	2148.6	1,351	2180.8	480	979.2	151	265.3	66	96.3	26	38.0	12	19.3	5	9.2	8	12.3	3,592	407.4
DUTCHESS			5	50.5	124	1270.9	128	1499.9	50	708.4	12	123.1	11	88.5	4	33.4	2	18.9	3	32.7	1	10.1	340	243.1
NASSAU			15	33.4	511	1294.5	570	1740.5	268	755.2	114	243.1	49	84.4	38	63.7	16	30.4	8	16.6	4	7.6	1,593	230.0
ORANGE			3	21.7	168	1422.3	158	1778.9	78	868.0	31	252.3	18	115.3	6	42.3	5	39.7			1	8.8	468	274.3
PUTNAM					16	603.8	16	856.5	2	85.2	3	82.5	1	19.1									38	79.2
ROCKLAND			1	9.1	100	1086.2	121	1636.7	56	740.9	21	201.9	17	139.4	5	44.7	1	9.3	2	18.6	1	8.7	325	221.3
SUFFOLK	1	1.0	12	23.6	731	1731.1	836	2293.4	326	783.4	142	261.7	64	94.8	24	39.1	19	36.5	3	6.1	10	18.5	2,168	299.1
SULLIVAN			1	36.7	59	2578.7	54	3028.6	26	1561.6	4	167.6	1	34.3	1	33.8	1	38.1					147	407.3
ULSTER			4	67.0	109	1920.0	101	1907.8	38	839.6	6	100.9	5	65.2	4	53.7	3	43.0					271	304.1
WESTCHESTER	4	6.2	34	109.6	609	2359.3	531	2286.4	227	825.9	101	280.2	64	153.2	26	63.2	11	30.3	2	6.3	7	18.5	1,616	334.3
METRO NY AREA TOTAL	5	1.5	75	43.2	2,427	1629.9	2,515	1993.2	1,071	783.3	434	239.0	230	102.9	108	50.4	58	30.8	18	10.4	24	12.6	6,966	275.2
BRONX	7	6.2	110	207.2	2,640	5407.1	2,305	4374.2	1,124	2113.7	401	717.6	214	365.4	112	209.9	48	110.3	23	59.4	24	53.6	7,052	986.7
KINGS	4	2.2	136	152.1	3,189	3743.0	3,512	3684.4	1,627	1594.9	824	819.2	406	399.0	209	210.0	142	162.0	75	94.3	90	107.1	10,271	782.9
NEW YORK	4	5.5	45	134.8	1,761	4720.4	1,714	2604.6	856	964.7	322	395.9	184	267.3	98	162.4	57	100.9	28	52.9	39	63.6	5,148	636.2
QUEENS	5	3.6	57	82.5	1,561	2400.0	1,720	2203.2	843	927.3	441	474.0	225	232.3	152	164.0	61	75.8	41	56.9	53	64.6	5,212	449.6
RICHMOND			6	38.9	229	1619.3	208	1622.0	93	622.4	36	207.9	13	69.6	5	25.9	4	23.2	2	12.2	4	24.1	605	264.3
NYC AREA TOTAL	20	3.7	354	135.9	9,380	3744.3	9,459	3104.2	4,543	1298.8	2,024	581.4	1,042	302.3	576	177.1	312	109.3	169	65.1	210	72.7	28,288	669.7

Table 14: Chlamydia Screening by Age Group, 2001-2006

AGE GROUP	Males		Females		Total	
	Total N	Positive N(%)	Total N	Positive N(%)	Total N	Positive N(%)
2001						
10-14	49	5(10.6)	236	40(17.5)	285	45(16.3)
15-19	1,410	225(16.9)	5,884	438(7.9)	7,294	663(9.6)
20-24	3,090	368(12.7)	8,131	373(4.8)	11,221	741(7.0)
25-29	2,006	145(7.7)	3,372	106(3.3)	5,378	251(5.0)
30+	4,487	167(3.9)	5,499	58(1.1)	9,986	225(2.4)
MISSING	29	2(7.7)	208	4(2.1)	237	6(2.8)
2002						
10-14	71	5(7.5)	238	40(17.6)	309	45(15.3)
15-19	2,434	344(14.5)	4,413	480(11.5)	6,847	824(12.6)
20-24	5,434	576(11.0)	6,063	351(6.1)	11,497	927(8.4)
25-29	3,434	256(7.8)	2,698	100(3.9)	6,132	356(6.1)
30+	8,528	250(3.0)	4,908	69(1.5)	13,436	319(2.5)
MISSING	1,320	67(5.1)	127	10(8.3)	1,447	77(5.4)
2003						
10-14	295	3(1.0)	306	58(19.6)	601	61(10.4)
15-19	3,073	513(16.8)	3,612	518(14.4)	6,685	1,031(15.5)
20-24	5,636	843(15.0)	4,782	395(8.3)	10,418	1,238(11.9)
25-29	3,502	405(11.6)	2,149	111(5.2)	5,651	516(9.2)
30+	8,845	391(4.4)	3,713	81(2.2)	12,558	472(3.8)
MISSING	347	5(1.4)	70	10(14.3)	417	15(3.6)
2004						
10-14	280	14(5.5)	248	46(19.7)	528	60(12.3)
15-19	3,419	563(16.7)	3,660	557(15.4)	7,079	1,120(16.0)
20-24	6,549	1,080(16.6)	4,922	410(8.4)	11,471	1,490(13.0)
25-29	4,112	483(11.8)	2,159	148(6.9)	6,271	631(10.1)
30+	9,539	458(4.8)	3,740	93(2.5)	13,279	551(4.2)
MISSING	786	23(2.9)	30	5(16.7)	816	28(3.5)
2005						
10-14	575	29(5.1)	268	34(12.7)	843	63(7.5)
15-19	3,886	542(14.0)	3,687	499(13.6)	7,573	1,041(13.8)
20-24	6,712	997(14.9)	4,909	389(7.9)	11,621	1,386(12.0)
25-29	4,105	446(10.9)	2,159	141(6.5)	6,264	587(9.4)
30+	9,910	410(4.2)	3,830	79(2.1)	13,740	489(3.6)
MISSING	110	3(2.7)	22	2(9.1)	132	5(3.8)
2006						
10-14	762	15(2.0)	313	47(15.2)	1,075	62(5.8)
15-19	4,251	583(13.8)	3,496	523(15.0)	7,747	1,106(14.3)
20-24	6,705	989(14.8)	4,606	444(9.7)	11,311	1,433(12.7)
25-29	4,401	519(11.8)	1,997	140(7.0)	6,398	659(10.3)
30+	10663	448(4.2)	3,633	106(2.9)	14,296	554(3.9)
MISSING	211	17(8.1)	63	5(7.9)	274	22(8.1)

Table 15: Screening for Chlamydial Infection in Prevalence Monitoring Sites - 2006

	Males		Females		Total	
	Total N	Positive N(%)	Total N	Positive N(%)	Total N	Positive N(%)
CLINIC TYPE						
STD	4,095	511(12.5)	2,322	223(9.6)	6,417	734(11.4)
ADOLESCENT HEALTH CENTER	147	26(17.7)	631	74(11.7)	778	100(12.9)
COLLEGE HEALTH CENTER	239	29(12.1)	1,299	46(3.5)	1,538	75(4.9)
COMMUNITY HEALTH CENTER	189	2(1.1)	408	12(2.9)	597	14(2.3)
FAMILY PLANNING	4,987	367(7.4)	98,733	3,432(3.5)	103,720	3,799(3.7)
AGE GROUP						
10-14	22	4(18.2)	882	53(6.0)	904	57(6.3)
15-19	1,799	222(12.3)	28,969	1,621(5.6)	30,768	1,843(6.0)
20-24	3,646	386(10.6)	38,303	1,496(3.9)	41,949	1,882(4.5)
25-29	1,851	191(10.3)	17,924	406(2.3)	19,775	597(3.0)
30+	2,313	128(5.5)	17,300	210(1.2)	19,613	338(1.7)
MISSING	26	4(15.4)	15	1(6.7)	41	5(12.2)
TOTAL	9,657	935(9.7)	103,393	3,787(3.7)	113,050	4,722(4.2)

Table 16: Screening for Chlamydial Infection in Sentinel Sites - 2006

	Males		Females		Total	
	Total N	Positive N(%)	Total N	Positive N(%)	Total N	Positive N(%)
STD CLINICS						
AGE GROUP						
10-14	25	3(12.0)	53	10(18.9)	78	13(16.7)
15-19	1,367	308(22.6)	1,734	315(18.2)	3,101	623(20.2)
20-24	3,323	639(19.4)	2,461	279(11.4)	5,784	918(16.0)
25-29	2,116	315(15.0)	1,319	101(7.7)	3,435	416(12.2)
30+	4,478	280(6.3)	2,436	74(3.0)	6,914	354(5.1)
MISSING	8	2(25.0)	3	1(33.3)	11	3(27.3)
CORRECTIONAL FACILITIES						
AGE GROUP						
10-14	725	9(1.2)	231	35(15.4)	956	44(4.6)
15-19	2,237	157(7.0)	396	58(14.8)	2,633	215(8.2)
20-24	1,819	122(6.8)	46	6(13.0)	1,865	128(6.9)
25-29	1,415	79(5.6)	60	2(3.3)	1,475	81(5.5)
30+	4,570	72(1.6)	176	6(3.4)	4,746	78(1.7)
MISSING	177	11(6.3)	42	3(7.1)	219	14(6.4)
TOTAL	22,258	1,997(9.0)	8,957	890(9.9)	31,215	2,887(9.3)

Technical notes for the 2006 STD statistical abstract:

Data Sources:

1. The 2006 STD morbidity data for New York State exclusive of New York City (also referred as “Upstate New York”) were obtained from the cases reported to New York State Department of Health (NYS DOH) through the Communicable Disease Electronic Surveillance System (CDESS).
2. The 2006 New York City (NYC) STD morbidity data were obtained from the data CD provided by the STD Control Program in New York City Department of Health and Mental Hygiene (NYC DOHMH) in June 2008.

For more information about NYC STD statistics, please contact STD Control Program, NYC DOHMH or visit their website: <http://www.nyc.gov/html/doh/html/std/std.shtml>.

3. The New York State population data were obtained from the CensusCD 2000 provided by GeoLytics, Inc., East Brunswick, New Jersey.

STD Statistics:

1. Reportable STDs in New York State include: syphilis, gonorrhea, *Chlamydia*, chancroid, granuloma inguinale, and lymphogranuloma venereum (LGV).
2. Individual STD cases were aggregated at the state and county level, by disease, age and sex.
3. The STD rates were calculated by the number of disease divided by the source population.
4. In 2005, CDC revised the definition for neurosyphilis and neurological involvement can occur at any stage for syphilis cases, thus, neurosyphilis is not classified as a separate stage for syphilis and is considered as a subset of syphilis cases.

NYC DOHMH began using the new case definition for neurosyphilis cases in 2005 and in Upstate New York, the new definition for neurosyphilis was adopted in 2006.

5. The numbers of gonorrhea cases were recorded in thousands for NYC before 1986.
6. *Chlamydia* became reportable in Upstate New York in August 2000, thus, the disease trend was presented for data between 2001 and 2006.

7. Statistics for chancroid, granuloma inguinale and LGV were not included in this report due to the small numbers of reported cases.

Disease	NYC	Upstate NY	NYS
Chancroid	4	0	4
Granuloma inguinale	0	0	0
LGV	14	2	16

8. Some cases did not have valid information on age and sex. They were included in the calculation for the total number of cases, but not included in the calculation for the age- and/or sex-specific tables.

1) Missing information for Upstate New York STD data:

Disease	Sex missing	Age missing
Syphilis	0	0
Gonorrhea	2	0
Chlamydia	1	1 (female case)

2) Missing information for NYC STD data:

Disease	Sex missing	Age missing
Syphilis	0	6 (4 male cases and 2 female cases)
Gonorrhea	2	66 (33 male cases, 32 female cases, and both age and sex were missing for 1 case)
Chlamydia	2	339 (139 male cases, 199 female cases, and both sex and age were missing for 1 case)

9. All data were analyzed using SAS® Version 9.1.3 software (SAS Institute, Inc., Cary, North Carolina).