

# NEW YORK STATE ASTHMA EMERGENCY DEPARTMENT VISITS

RATES PER 10,000 POPULATION, AGE 18-64

DELAWARE COUNTY RESIDENTS PER ZIP CODE, 2007-2009

## ASTHMA ED VISIT RATE

DELAWARE COUNTY - 32.3

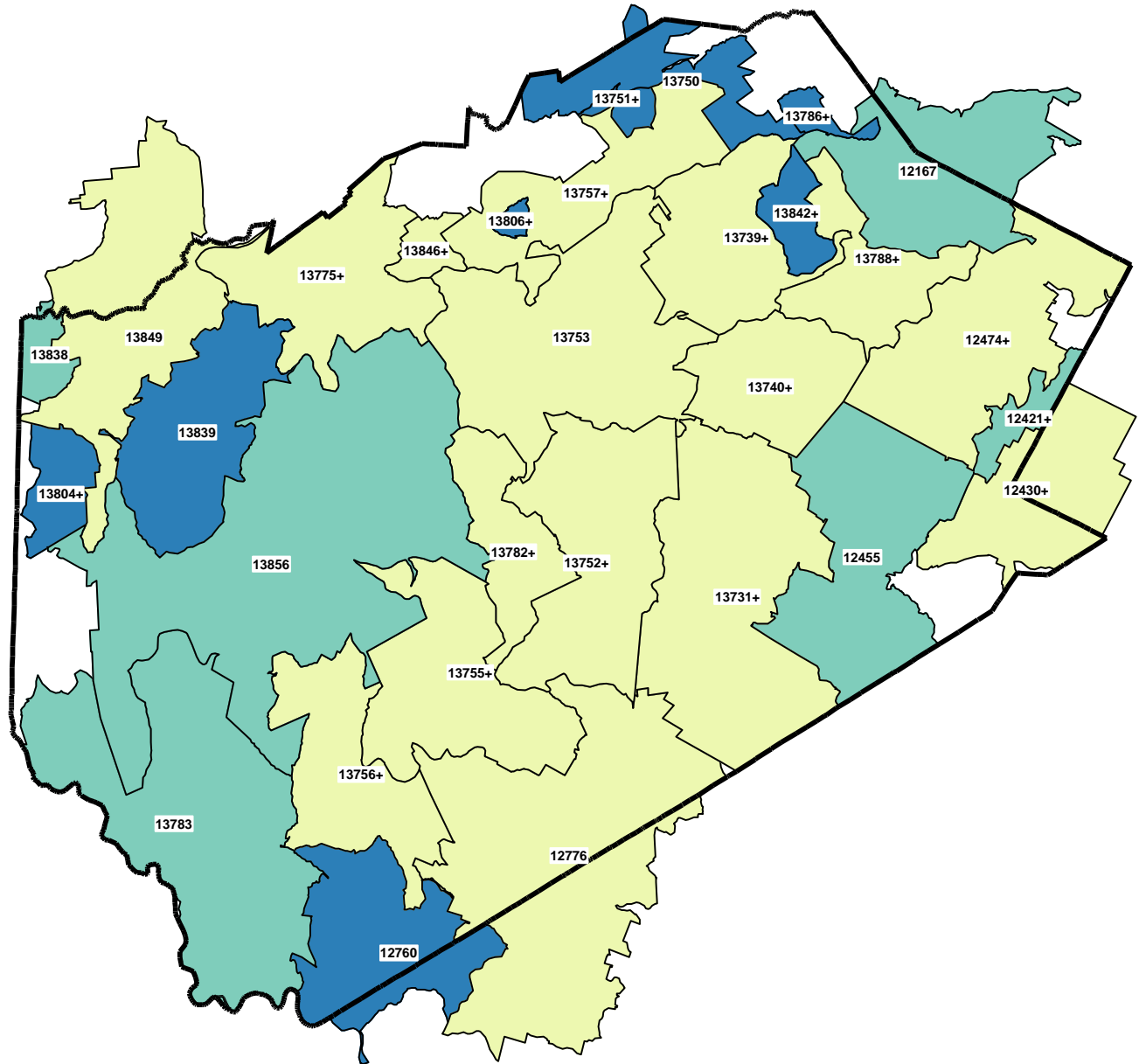
NEW YORK STATE - 73.5

NEW YORK STATE (Excl NYC) - 48.9

### **Quartile (Q) Distribution (Excl NYC)**

(Rates per 10,000 population)

- 0 - <34.1: Q1 & Q2
- 34.1 - <55.6: Q3
- 55.6 + : Q4



+ LESS THAN OR EQUAL TO 10 VISITS, THEREFORE RATE MAY NOT BE STABLE (RSE>30%)

SOURCE: NYS EMERGENCY DEPARTMENT DATA (SPARCS)  
Note: Blank areas are in adjacent counties