

NEW YORK STATE ASTHMA EMERGENCY DEPARTMENT VISITS

RATES PER 10,000 POPULATION, AGE 65+

DELAWARE COUNTY RESIDENTS PER ZIP CODE, 2007-2009

ASTHMA ED VISIT RATE

DELAWARE COUNTY - 11.2

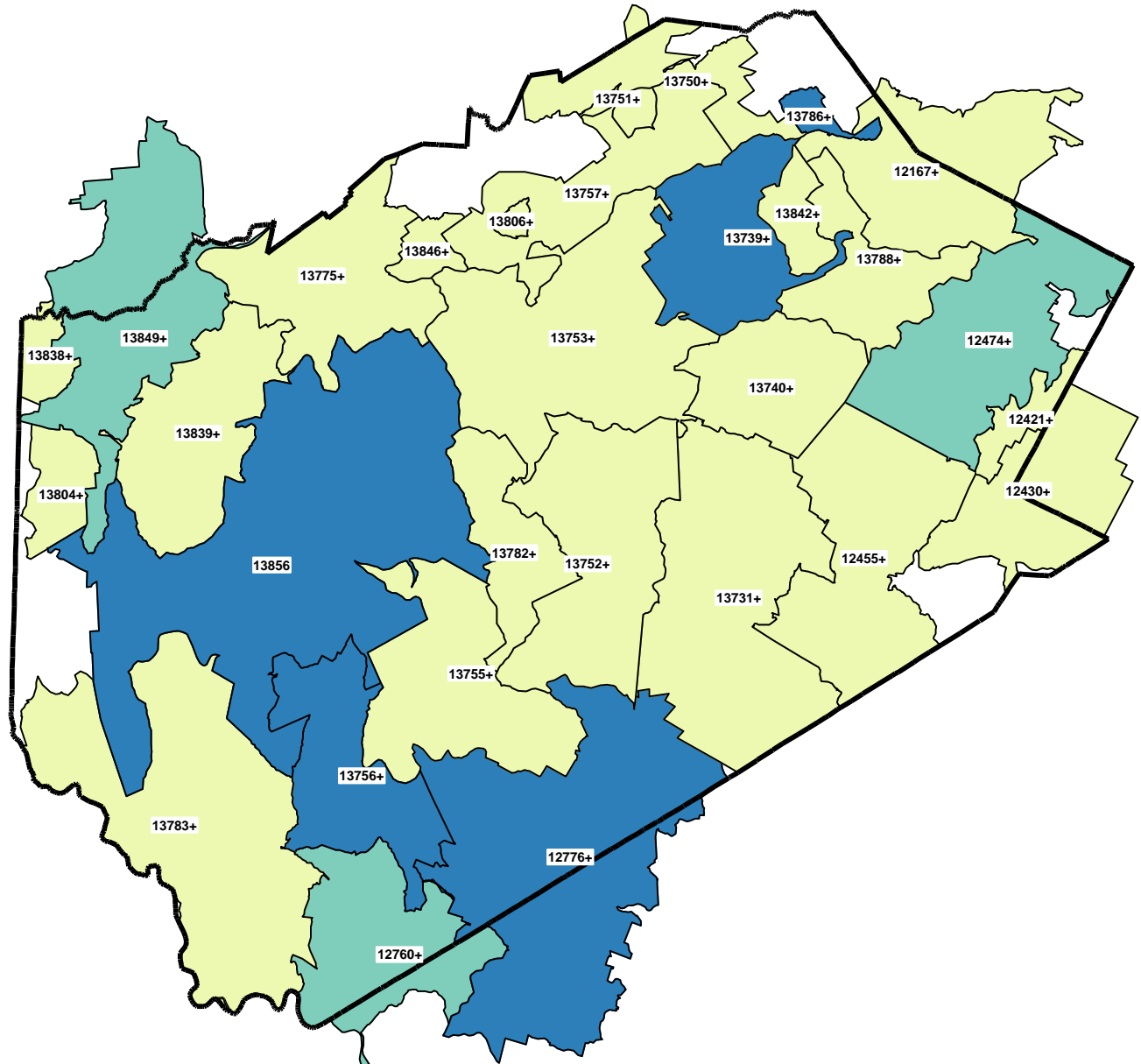
NEW YORK STATE - 31.4

NEW YORK STATE (Excl NYC) - 18.6

Quartile (Q) Distribution (Excl NYC)

(Rates per 10,000 population)

- 0 - <16.5: Q1 & Q2
- 16.5 - <30.8: Q3
- 30.8 + : Q4



+ LESS THAN OR EQUAL TO 10 VISITS, THEREFORE RATE MAY NOT BE STABLE (RSE>30%)

SOURCE: NYS EMERGENCY DEPARTMENT DATA (SPARCS)
Note: Blank areas are in adjacent counties