

NEW YORK STATE ASTHMA EMERGENCY DEPARTMENT VISITS

RATES PER 10,000 POPULATION, TOTAL

DELAWARE COUNTY RESIDENTS PER ZIP CODE, 2007-2009

ASTHMA ED VISIT RATE

DELAWARE COUNTY - 33.2

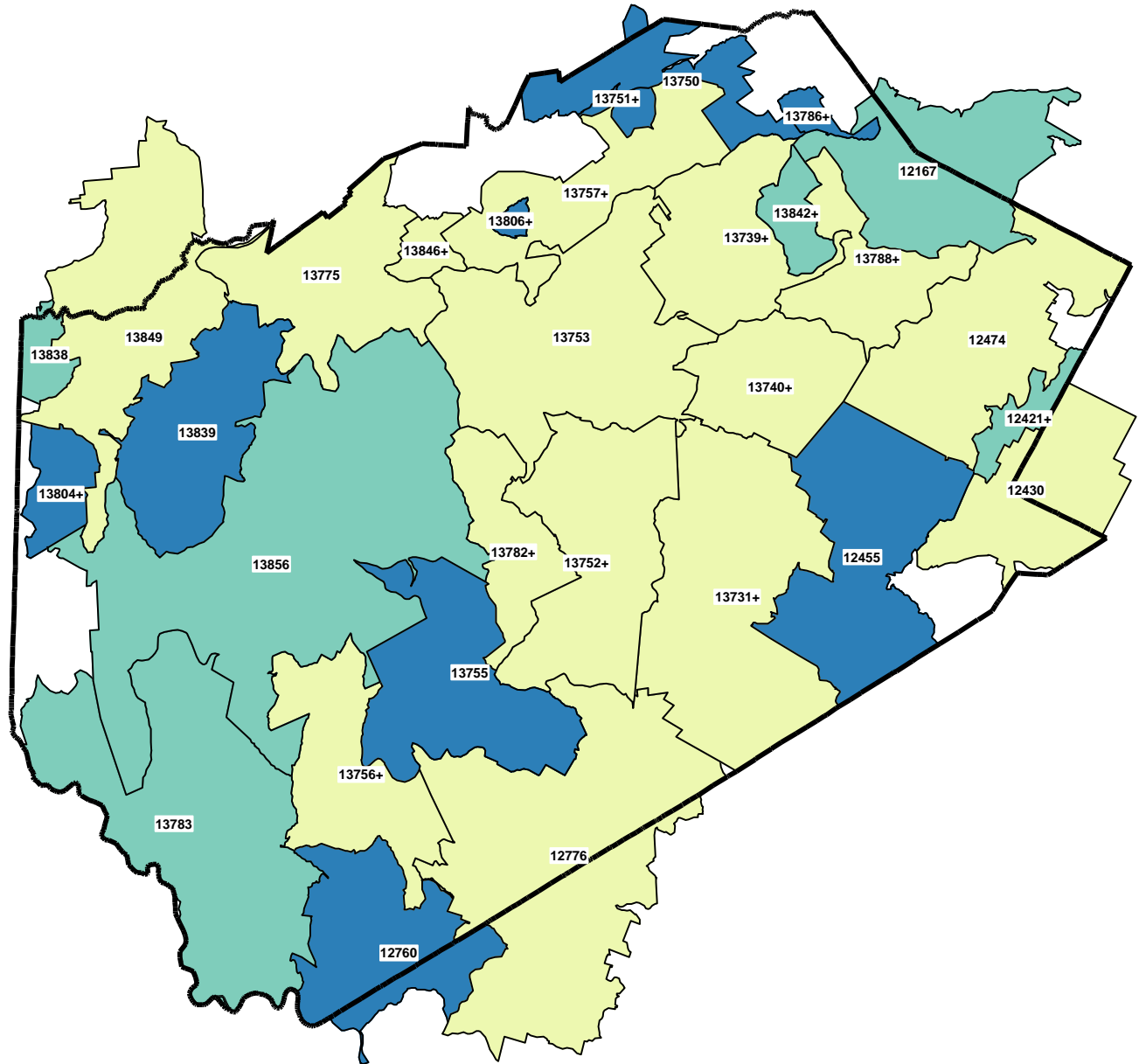
NEW YORK STATE - 83.4

NEW YORK STATE (Excl NYC) - 51.1

Quartile (Q) Distribution (Excl NYC)

(Rates per 10,000 population)

- 0 - <36.5: Q1 & Q2
- 36.5 - <57.0: Q3
- 57.0 + : Q4



+ LESS THAN OR EQUAL TO 10 VISITS, THEREFORE RATE MAY NOT BE STABLE (RSE>30%)

SOURCE: NYS EMERGENCY DEPARTMENT DATA (SPARCS)
Note: Blank areas are in adjacent counties