

NEW YORK STATE ASTHMA HOSPITAL DISCHARGES

RATES PER 10,000 POPULATION, AGE 0-4

DELAWARE COUNTY RESIDENTS PER ZIP CODE, THREE YEAR AVERAGE 2007-2009

ASTHMA HOSPITAL DISCHARGE RATE

DELAWARE COUNTY - 22.6

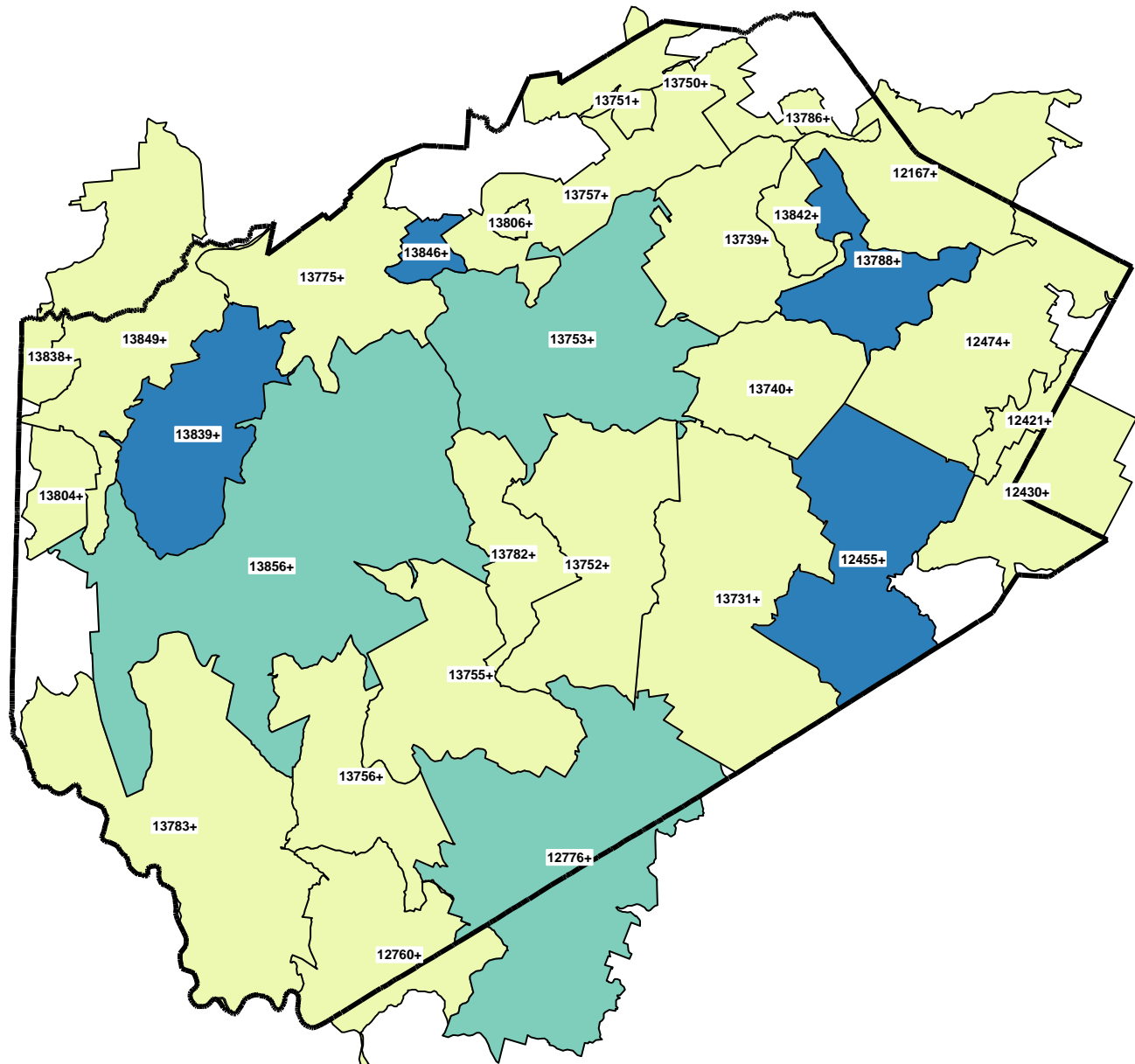
NEW YORK STATE - 58.8

NEW YORK STATE (Excl NYC) - 35.8

Quartile (Q) Distribution

(Rates per 10,000 population)

- 0 - <15.6: Q1 & Q2
- 15.6 - <37.1: Q3
- 37.1 + : Q4



+ LESS THAN OR EQUAL TO 10 HOSPITAL DISCHARGES, THEREFORE RATE MAY NOT BE STABLE (RSE>30%)

SOURCE: NYS HOSPITAL DISCHARGE DATA (SPARCS)
Note: Blank areas are in adjacent counties