

# NEW YORK STATE ASTHMA HOSPITAL DISCHARGES

RATES PER 10,000 POPULATION, AGE 65+

DELAWARE COUNTY RESIDENTS PER ZIP CODE, THREE YEAR AVERAGE 2007-2009

## ASTHMA HOSPITAL DISCHARGE RATE

DELAWARE COUNTY - 18.4

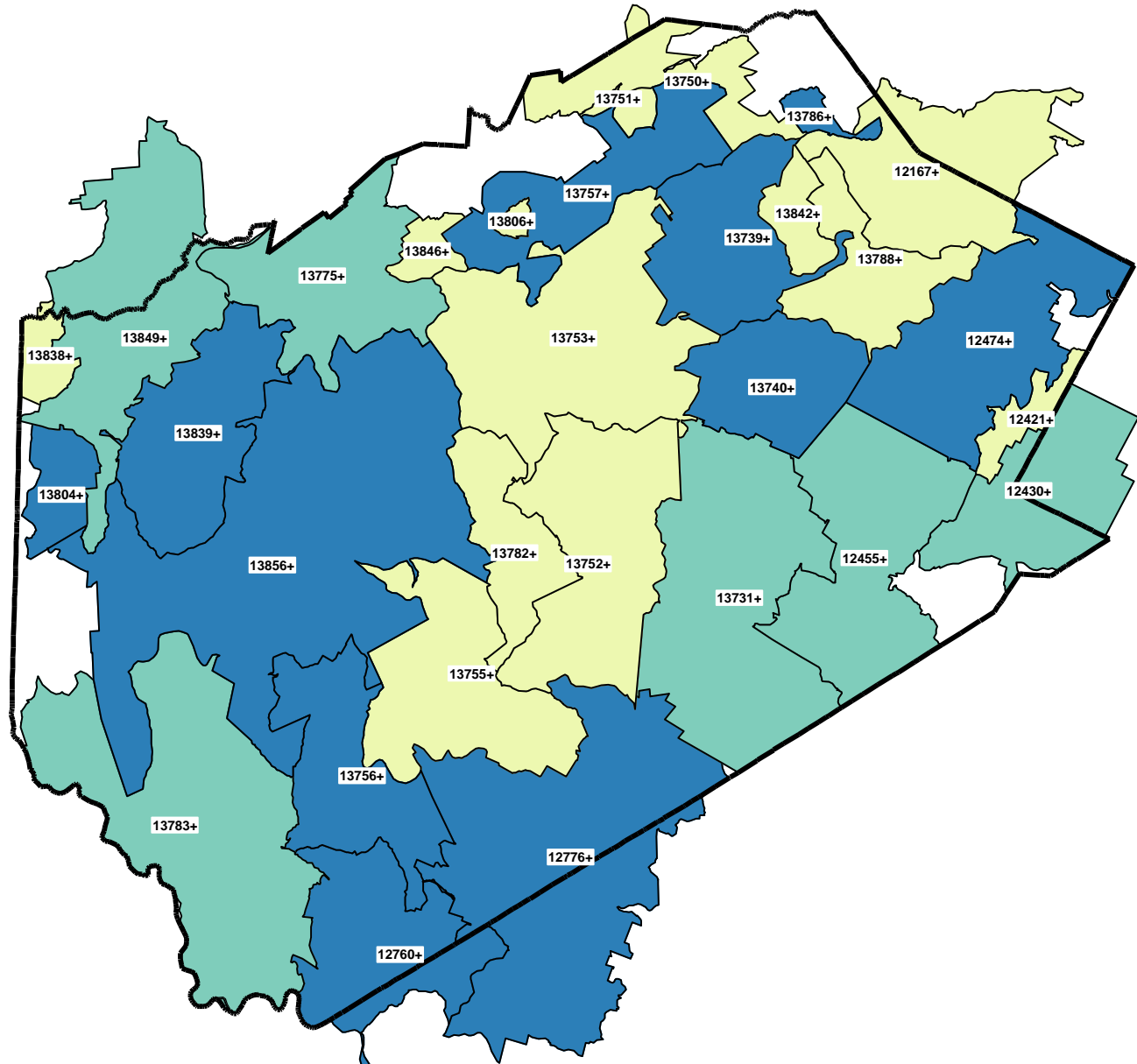
NEW YORK STATE - 31.2

NEW YORK STATE (Excl NYC) - 19.0

### Quartile (Q) Distribution

(Rates per 10,000 population)

- 0 - <10.9: Q1 & Q2
- 10.9 - <20.8: Q3
- 20.8 + : Q4



+ LESS THAN OR EQUAL TO 10 HOSPITAL DISCHARGES, THEREFORE RATE MAY NOT BE STABLE (RSE>30%)

SOURCE: NYS HOSPITAL DISCHARGE DATA (SPARCS)  
Note: Blank areas are in adjacent counties