




# THE INTERSECTION OF HEALTHCARE AND GUN VIOLENCE

A trauma surgeon's  
perspective

The logo of the University at Buffalo, featuring a bison standing on a shield with the letters 'U' and 'B' on either side, and the year '1846' at the bottom. The shield is flanked by laurel branches.

 **University at Buffalo** The State University of New York

1

 **University at Buffalo** The State University of New York

## Overview and Objectives

- Provide a brief overview of the issue – The “What”
- Explain why health care providers must lead on this issue – The “Why”
- Introduce sites of intersection of gun violence and health care – The “Where”
- Introduce a comprehensive approach to stimulate discussion – The “How”

- **Move from description to action**

2

2

## Kyiv Ukraine



3

3

## Russo-Ukrainian War

- Ukraine 2022  
38,000 deaths
- United Nations Statement  
“Deplorable”  
“Violation of humanitarian rights”  
“Violation of humanitarian law”  
“1.5 million children at risk of depression anxiety and PTSD”  
“Increasing childhood poverty”



4

4

**UB** University at Buffalo The State University of New York


## Background – The “What”

Ukraine 2022  
38,000 deaths

United States 2022  
48,000 deaths

United Nations Statement

- “Deplorable”
- “Violation of humanitarian rights”
- “Violation of humanitarian law”
- “1.5 million children at risk of depression anxiety and PTSD”
- “Increasing childhood poverty”



5

5

**UB** University at Buffalo The State University of New York

## Background – The “What”

- **Leading cause of death in children (ages 1-24)** - NEJM April 2022
- **\$173-332 billion dollars annually**
- **2 businesses lost for each homicide** – Thomas Abt

- **“If you just look at the numbers you are missing the point.”** - Rosenberg

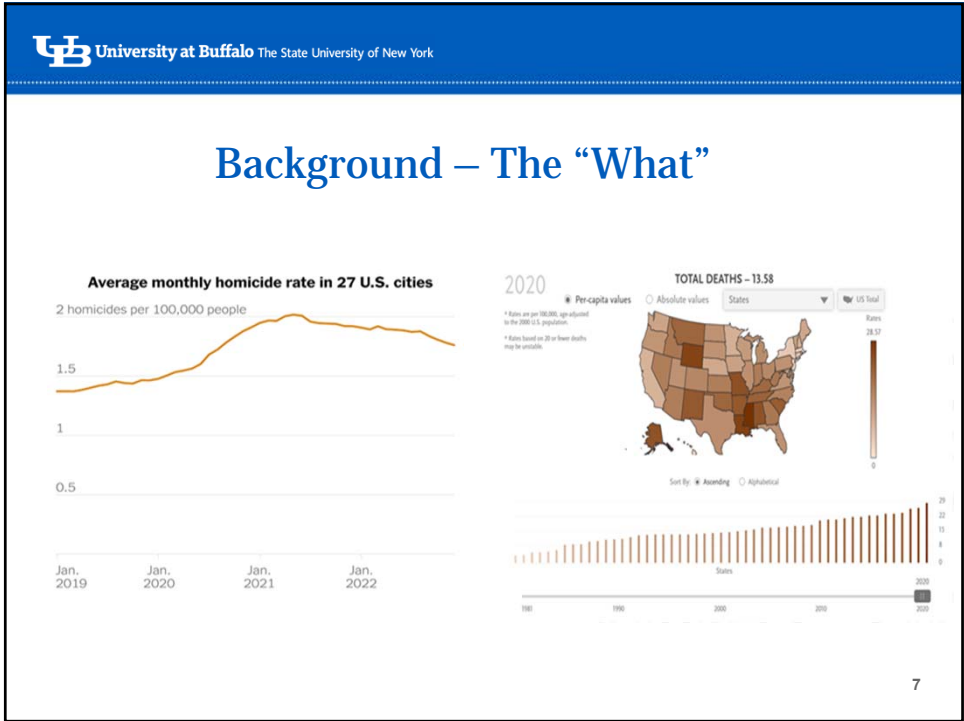
**GUN VIOLENCE ARCHIVE 2022**  
Evidence Based Research - since 2013

PUBLISHED DATE: March 02, 2023

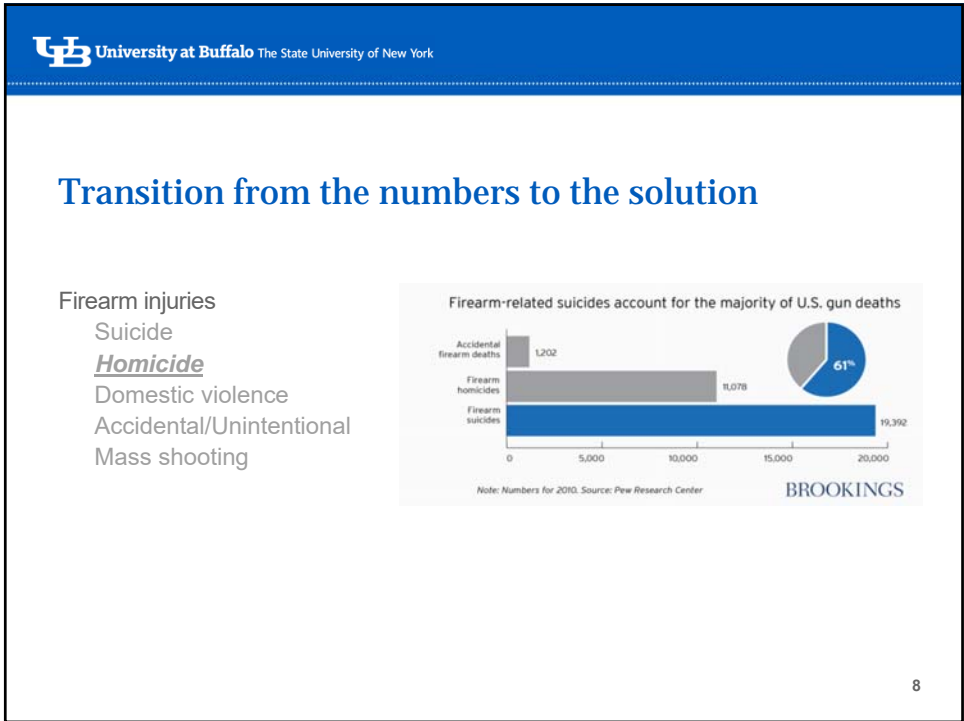
<b>Total Number of GV Deaths - ALL Causes<sup>4</sup></b>	<b>44,313</b>
Homicide/Murder/Unintentional/DGU <sup>1</sup>	20,223
Suicide <sup>3</sup>	24,090
<b>Total Number of Injuries<sup>1</sup></b>	<b>38,579</b>
Mass Shootings <sup>2</sup>	647
Mass Murders <sup>2</sup>	36
Number of Children (age 0-11) <sup>1</sup>	Killed 314
	Injured 682
Number of Teens (age 12-17) <sup>1</sup>	Killed 1,363
	Injured 3,804

6

6



7



8

## The why

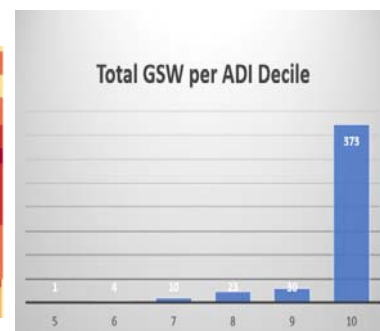
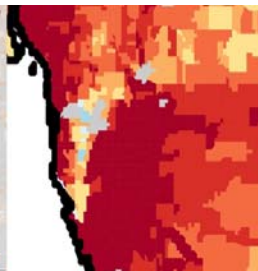
- Institutional  
 “This is the job of public health, to help the most vulnerable and to stand up for them” – Rosenberg
- Provider based  
 We understand the socioeconomic determinants of health.  
 We are positioned and resourced to respond.  
 We are a diverse group.



9

9

## Overlap of ADI/SDI with firearm injury recidivism



10

10

University at Buffalo The State University of New York

## Intersection of Healthcare and gun violence – The “Where”

11

11

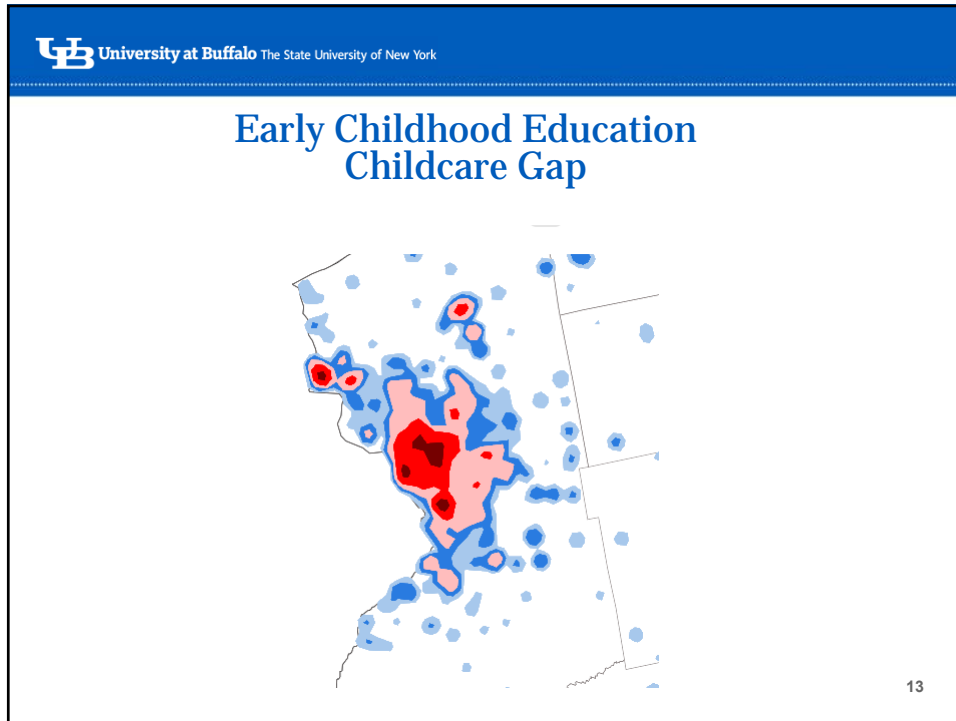
University at Buffalo The State University of New York

## Overview of a treatment plan

- *Early Childhood Education*
- *Mentoring youth*
- *U-CAN United Against Crime Community Action Program*
- *Hospital Based Interventions – SNUG/BRAVE*
- Buffalo Weightlifting
- Medical outreach
- Place Based approaches
- Education and career counseling
- Policing
- Gun Safety Education
- Legislative advocacy
- Activism
- Mental Health Initiatives

12

12



13


**University at Buffalo** The State University of New York

## Early Childhood Education – The Challenge

- Underdeveloped Communities
  - Parents face barriers to success
  - Lack of employment opportunities
  - Lack of educational opportunities
  - Early childhood education is lacking
  - Interactions between groups is lacking reinforcing bias
- University and Healthcare
  - Early Childhood education is lacking
  - Staffing for early childhood education is unavailable
  - Implicit bias is widespread
  - Lack of understanding of the community in which we practice
  - Interactions between groups is lacking reinforcing bias

14

14

## Early Childhood Education – The Solution

- Shared early childhood education centers
- Employment opportunities
- Advanced educational opportunities with tuition support
- Subsidized childhood education for those below FPL
- “Pods” of 32 children each; age 6 month to 5 y/o



15

15

## Early Childhood Education – The Cost

- \$1.4-2.2 mil for startup and first year of operation for 3 pods (96 children)
- Costs offset by tuition, grants and subsidies
- Need 50% to fund the first 6 months of startup. \$700,000-1.1 mil.
- **2023-2024 Governor’s Executive Budget**
- **Proposes \$5.4M in new funding for the creation of childcare centers on every SUNY campus.**

16

16



## Mentoring Youth – The Challenge

- Children may lack positive role models (ages 5-18)
- Children lack opportunity
- Healthcare providers may not understand their practice community
- Trainees may not understand their educational community
- Implicit bias is widespread and difficult to mitigate



17

17

## Mentoring Youth – The Solution

- 1:1 mentoring; ages 5-18
- 30-60 minutes per week for 1 year
- Benefits to both mentor and mentee
- Structure provided by NYS Mentoring



18

18

## U-CAN (United Community Action Network)

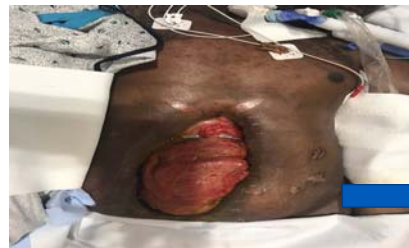
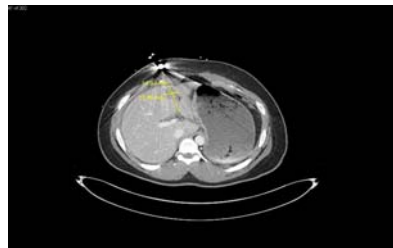
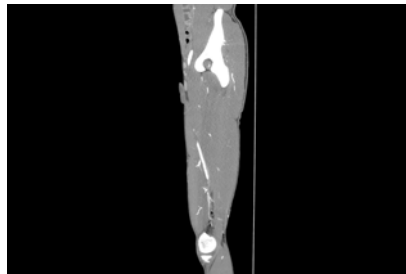
- Program that originated in Oneida and Albany
- Youthful offenders identified by the court
- Weekly 1:1 mentoring over a period of 1 year
- Successful completion allows a reduction of charges
- Coupled with legal and social supports



19

19

## Community Outreach – SNUG



20

20

## Community Outreach - SNUG

- A project of the NYS Division of Criminal Justice Services
- Attempts to reduce and prevent violence
- SNUG staff work in hotspots with at risk youth
- Provide mentorship to break the cycle of violence
- Defuse conflict and violence
- Provide conflict resolution skills
- Link those at risk to services
- Work with victims of gun violence in the hospital setting
- “Credible Messengers”

21

21

## Buffalo Rising against violence at ECMC - BRAVE

- Hospital Based Violence Intervention Program
- Work with victims of violence
- Provide in house support to victims of violence
- Collaborate with community partners to provide ongoing support
- Collaborate with University partners
- Provide prompt access to resources
- Follow through

22

22

 **University at Buffalo** The State University of New York

## Benefits to Healthcare Providers & Trainees

**Forbes**

### The Unspoken Causes Of Physician Burnout


 **Robert Pearl, M.D.** Contributor   
Healthcare



According to a recent Harvard report, physician burnout is "a public health crisis that urgently demands action."


23

23

 **University at Buffalo** The State University of New York

## Unobtainable?

- UB faculty and students
  - 36,000
- Buffalo Public School Students
  - 34,000
- Tunneling of  $\frac{3}{4}$  of a mile of expressway.
- NYS DOT's most complex project
- Initial budget \$1 billion



**\$1.5 Billion E1, Kensington Expressway Project**  
Project Concept: A Kensington Reconstruction with a 1/2 mile Tunnel for  
Regional Community Transportation, Including a Transitway Priority Corridor  
[www.ub.edu/ubuff](http://www.ub.edu/ubuff)

24

24

## The When

- Question is not whether we can do these things, but rather whether we want to do them.
- “The best time to plant a tree was 20 years ago; the second-best time is now.”

- [jlukan@buffalo.edu](mailto:jlukan@buffalo.edu)
- 716-432-0617



25