

Office of Health Equity & Human Rights

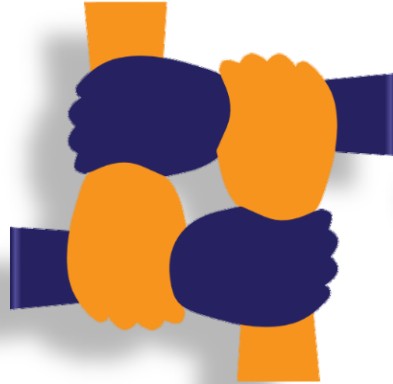


Public Health Committee
February 8, 2023

Offices of Health Equity and Human Rights



AIDS Institute



Minority Health and
Health Disparities
Prevention



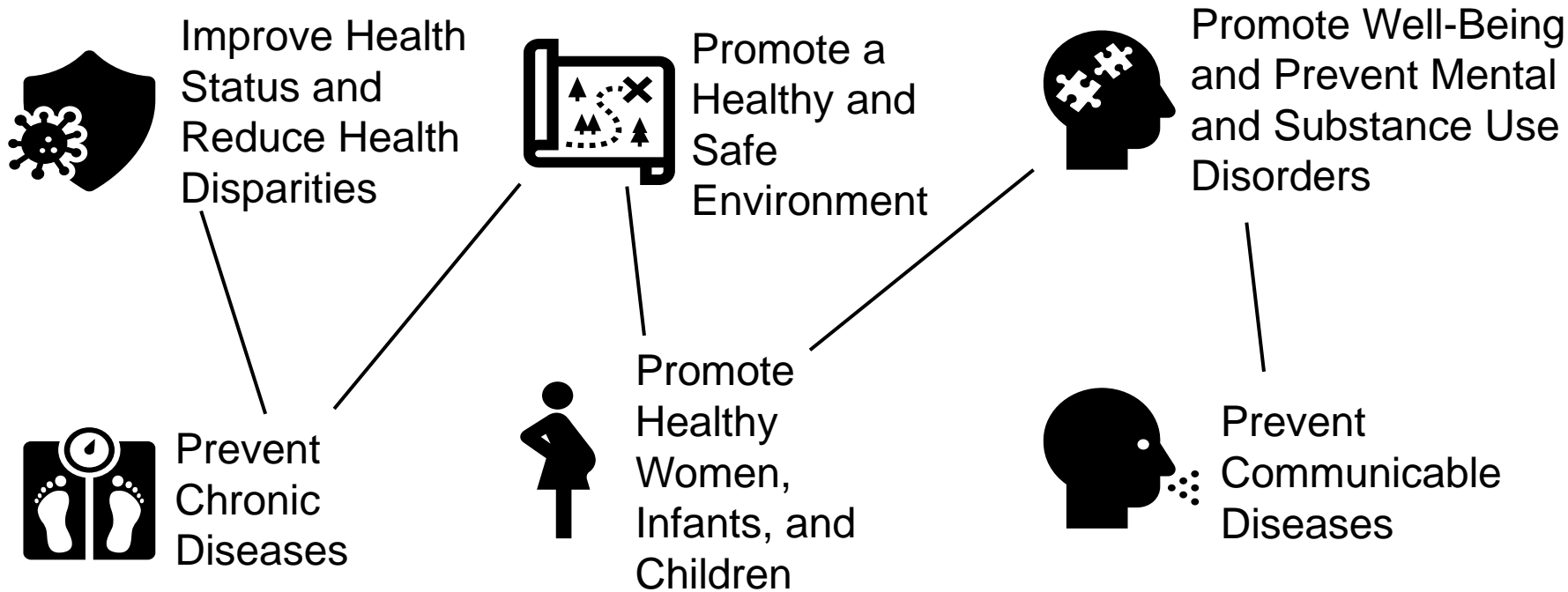
Gun Violence
Prevention



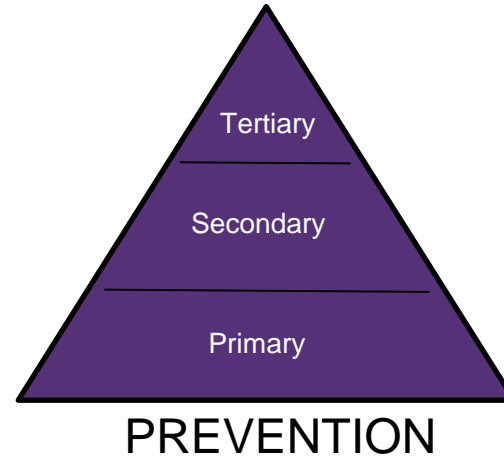
Office of DEI

**The vision of the Prevention
Agenda for 2019-2024 is that
New York is the Healthiest
State in the Nation for
People of All Ages**

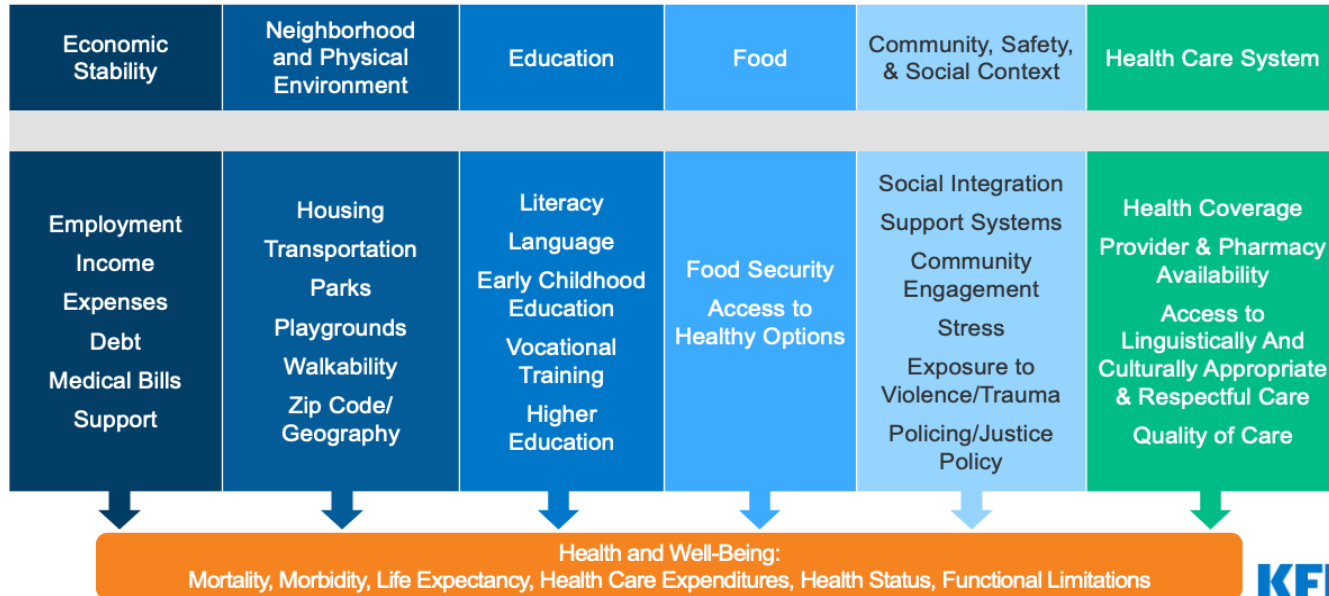
Integrating Equity into the Prevention Agenda



Cross-Cutting Principles

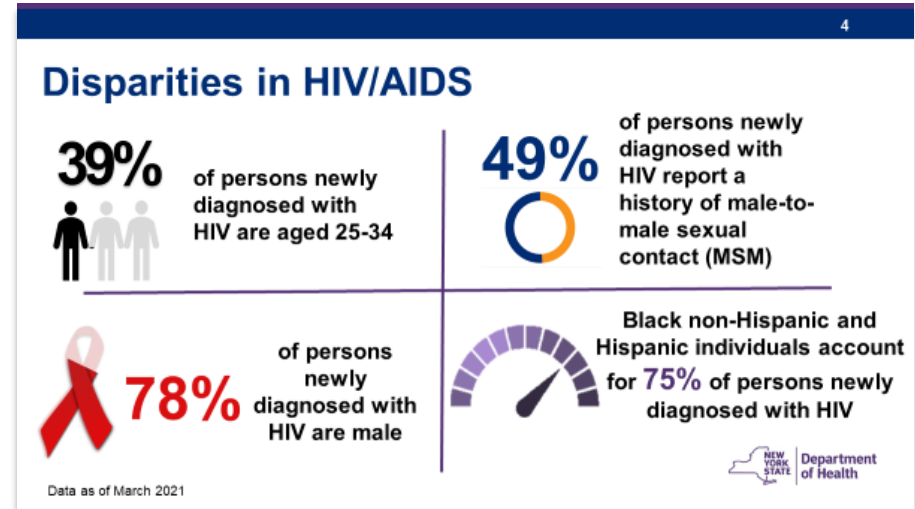


"**Social determinants of health**" shall mean **life-enhancing resources**, such as availability of healthful foods, quality housing, economic opportunity, social relationships, transportation, education, and health care, whose distribution across populations effectively determines the length and quality of life.



NYS PHL Article 2-F

"**Health disparities**" shall mean **measurable differences** in health status, access to care, and quality of care as determined by race, ethnicity, sexual orientation, gender identity, a preferred language other than English, gender expression, disability status, aging population, immigration status, and socioeconomic status.



"Health equity" shall mean achieving the highest level of health for all people and shall entail focused efforts to address avoidable inequalities by equalizing those conditions for health for those that have experienced injustices, socioeconomic disadvantages, and systemic disadvantages.

WHAT IS HEALTH EQUITY?

Equity is the absence of avoidable, unfair, or remediable differences among groups of people, whether those groups are defined socially, economically, demographically or geographically or by other means of stratification.

-World Health Organization

Health equity means that everyone has a fair and just opportunity to be healthier.

This requires removing obstacles to health such as poverty, discrimination, and their consequences, including powerlessness and lack of access to good jobs with fair pay, quality education and housing, safe environments, and health care.

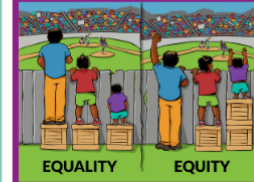
-Robert Wood Johnson Foundation

The route to achieving equity will not be accomplished through treating everyone equally. It will be achieved by treating everyone justly according to their circumstances.

-Paula Dressel,
Race Matters Institute

Research shows that problems like poverty, unemployment, low educational attainment, inadequate housing, lack of public transportation, exposure to violence, and neighborhood deterioration (social or physical) shape health and contribute to health inequities.

-National Academy of Sciences



Interaction Institute for
Social Change
Artist: Angus Maguire

JOHNS HOPKINS ALLIANCE FOR A HEALTHIER WORLD

<https://www.ahealthierworld.jhu.edu/understand-health-equity>



Department
of Health

Guiding Principles to address disparities



Re-invest in neighborhoods that have been disproportionately impacted by systemic racism and policies



Amplify community voice and power to elevate marginalized communities using an assets-based approach



Address social determinants of health and promote health equity and racial justice



Employ individuals in workplaces that value lived experiences, provide livable wages, and offer purposeful work



Community driven investment planning so the local communities are providing input on the best use of funding and resources



Invest in youth organizations and community coalition development to build credibility and trust in communities



Department of Health

New York State 2021 Health Equity Report

The New York State 2021 Health Equity Report series presents data on health outcomes, demographics, and other community characteristics for cities and towns with a 40% or greater non-White population throughout New York State.

Each town or city specific report contains data associated with the priority areas of the [Prevention Agenda 2019-2024](#) (New York State's Health Improvement Plan), as well as social determinant indicators such as housing, educational attainment and insurance coverage.

This information can:

- Understand and identify priorities
- Mobilize communities
- Target health related interventions
- Promote health equity

Table of Contents	
Introduction	3
Minority population distribution map by census block group, 2014-2018	6
Population Demographics	7
Table 1. Demographic characteristics of the Town/City, County and State, 2014-2018	7
Improve Health Status and Reduce Health Disparities	9
Figure 1. Percentage of premature deaths (before age 65 years), 2016-2018	9
Table 2. Percentage of premature deaths (before age 65 years), 2016-2018	9
Figure 2. Age-adjusted potentially preventable hospitalization rate per 10,000 population, aged 18+ years, 2016-2018	10
Table 3. Age-adjusted potentially preventable hospitalization rate per 10,000 population, aged 18+ years, 2016-2018	10
Promote a Healthy and Safe Environment	11
Figure 3. Age-adjusted homicide related death rate per 100,000 population, 2016-2018	11
Figure 4. Rate of emergency department visits due to falls per 10,000 population, aged 1-4 years, 2016-2018	12
Figure 5. Rate of hospitalizations due to falls per 10,000 population, aged 65+ 2016-2018	13
Figure 6. Age-adjusted assault related hospitalization rate per 10,000 population, 2016-2018	14
Table 4. Indicator data related to Prevention Agenda Priority Area: Promote a Healthy and Safe Environment, 2016-2018	14
Prevent Chronic Diseases	15
Figure 7. Rate of emergency department visits for asthma per 10,000 population, all ages, 2016-2018	15
Figure 8. Rate of emergency department visits for asthma per 10,000 population, aged 0-4 years, 2016-2018	16
Figure 9. Rate of hospitalizations for short-term diabetes complications per 10,000 population, aged 18+, 2016-2018	17
Figure 10. Age-adjusted heart attack hospitalization rate per 10,000 population, 2016-2018	18
Table 5. Indicator data related to Prevention Agenda Priority Area: Prevent Chronic Disease, excluding cancer, 2016-2018	18
Figure 11. Observed to expected case ratio and late diagnoses for common cancer types, 2015-2017	19
Table 6. Observed to expected case ratio and late diagnoses for common cancer types, 2015-2017	19
Prevent Communicable Diseases	20
Figure 12. Age-adjusted gonorrhea case rate per 100,000 females, 2016-2018	20
Figure 13. Age-adjusted gonorrhea case rate per 100,000 males, 2016-2018	21
Figure 14. Age-adjusted chlamydia case rate per 100,000 females, 2016-2018	22
Figure 15. Age-adjusted chlamydia case rate per 100,000 males, 2016-2018	23
Figure 16. Age-adjusted early syphilis case rate per 100,000 males, 2016-2018	24
Figure 17. Rate of newly diagnosed HIV cases per 100,000 population, aged 13+ 2016-2018	25
Table 7. Indicator data related to Prevention Agenda Priority Area: Prevent Communicable Diseases, 2016-2018	25
Promote Healthy Women, Infants, and Children	26
Figure 18. Infant mortality rate per 1,000 live births, 2016-2018	26
Figure 19. Percentage of infants born to mothers who were exclusively breastfed in hospital, 2016-2018	27
Figure 20. Percentage of low birthweight singletons, 2016-2018	28
Table 8. Indicator data related to Prevention Agenda Priority Area: Promote Healthy Women, Infants and Children, 2016-2018	28
Prevent Mental and Substance Use Disorders	29
Figure 21. Age-adjusted suicide rate per 100,000 population, 2016-2018	29
Figure 22. Age-adjusted alcohol related death rate per 100,000 population, 2016-2018	30
Table 9. Indicator data related to Prevention Agenda Priority Area: Promote Well-Being and Prevent Mental and Substance Use Disorders, 2016-2018	30
	31
	39

City of Albany Health Equity Report



Centering the voices of communities and stakeholders



- Advancing Equity
- Access to support and care
- Anti-stigma efforts
- Promotion of human rights

THANK YOU

Johanne E. Morne, MS
Deputy Commissioner, Health Equity and Human Rights

Johanne.Morne@health.ny.gov