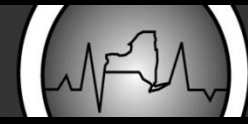




*Redesigning*  
THE MEDICAID PROGRAM



# Patient Centered Medical Home

NYSDOH Quarterly Report

July 1, 2012-September 30, 2012 (Q3 2012)



# The National Committee for Quality Assurance's (NCQA) Patient Centered Medical Home

- NCQA's Patient-Centered Medical Home (PCMH) is a recognition awarded to providers that meet a set of standards for improving primary care, including increased care coordination and access.
- Providers can be recognized as level 1, 2, or 3 (3 is the highest recognition) under either the 2008 standards, or the more stringent 2011 standards.
- New York State Medicaid reimburses PCMH-recognized providers at a higher rate than non-PCMH recognized providers.



# About this Report

- Due to growing interest and inquiries regarding Patient Centered Medical Homes (PCMH) in New York State, the NYSDOH has begun creating quarterly reports that provide a snapshot of PCMH growth in New York.
- The report's three sections review:
  1. Changes in the number of PCMH-recognized providers,
  2. Changes in the number of Medicaid enrollees that see PCMH-recognized providers, and
  3. The amount spent by New York State Medicaid (through increased capitation or fee-for-service PCMH 'add-ons' for qualifying visits) on PCMH in this quarter, and year to date.
- This report does not analyze or present programmatic results related to quality or satisfaction.



# Summary

- In December 2012, there were 4,626 providers\* in New York State recognized as Patient Centered Medical Home (PCMH) providers by the National Committee for Quality Assurance (NCQA). 3,813 of these providers have achieved the highest (level 3) recognition (83%).
- The majority of providers (4,332 or 94%) are recognized under 2008 standards; 294 providers (6%) are recognized under 2011's more stringent standards.
- The number of PCMH providers has grown modestly in 2012, but remains fairly static.
- Over 44,000 fee-for-service (FFS) Medicaid recipients had a qualifying visit (a visit that resulted in an 'add-on' payment) with a PCMH provider in Q3 2012.
- As of Q3 2012, 40% of Medicaid Managed Care (MMC) members were assigned to a PCMH recognized Primary Care Provider (PCP). This represents a 2% increase over the previous quarter.
- As of Q3 2012, 39% of Child Health Plus (CHP) members were assigned to a PCMH recognized PCP.
- About \$56 million were disbursed to PCMH providers by MMC in Q1 through Q3 2012.
- About \$1.3 million were disbursed to PCMH providers by Medicaid FFS in Q3 2012. The year to date (YTD) amount disbursed by FFS is \$3.5 million

\*Providers include the following credentials: MD, NP, PA, DO, FNP, RPAC, CNM, LCSW, NPP, NPC, ACNP, CRNP, DPM, ANP, PNP



**Redesigning**  
THE MEDICAID PROGRAM



# Section 1: Provider Information

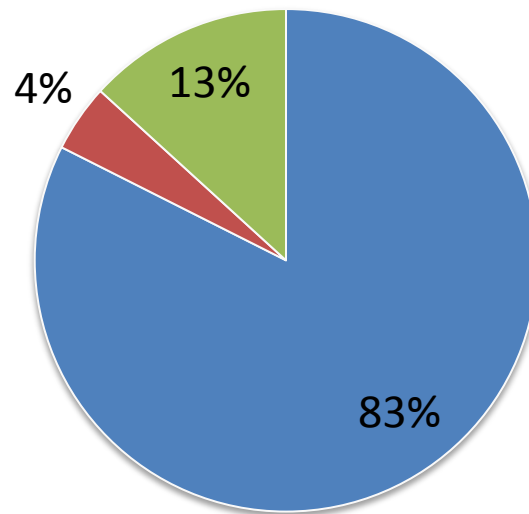
Some of the information in this section reflects the most recently available data (as of December 2012) and is therefore more recent than the Quarter this report focuses on (Q3 2012).



Table 1a shows the number of PCMH providers in New York State by NCQA recognition level (total=4,626). Over 4,000 (88%) of these providers participate with Medicaid Managed Care plans.

**Table 1a: Chart PCMH Provider Count  
(December 2012)**

■ Level 3 ■ Level 2 ■ Level 1



Level 3	3,813
Level 2	201
Level 1	612



Table 1b shows changes to the number of PCMH providers in New York State by NCQA recognition level by month.

**Table 1b: PCMH Providers by Level  
(December 2012 Total= 4,626)**

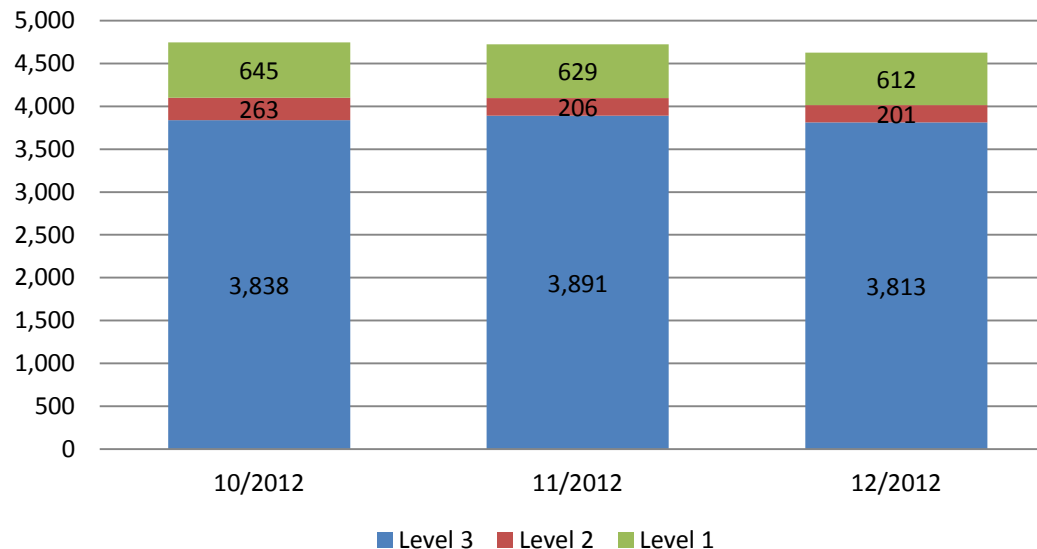




Table 2 shows the number of PCMH providers that were NCQA recognized as medical homes under 2008 standards vs. those recognized under 2011 standards.\*

**Table 2: PCMH Providers: '08 Standards vs '11 Standards (SW Only)**

	<b>10/1/2012</b>	<b>11/1/12</b>	<b>12/1/12</b>
'08 Standard	4,567(96%)	4,479 (95%)	4,332 (94%)
'11 Standard	179 (4%)	247 (5%)	294 (6%)

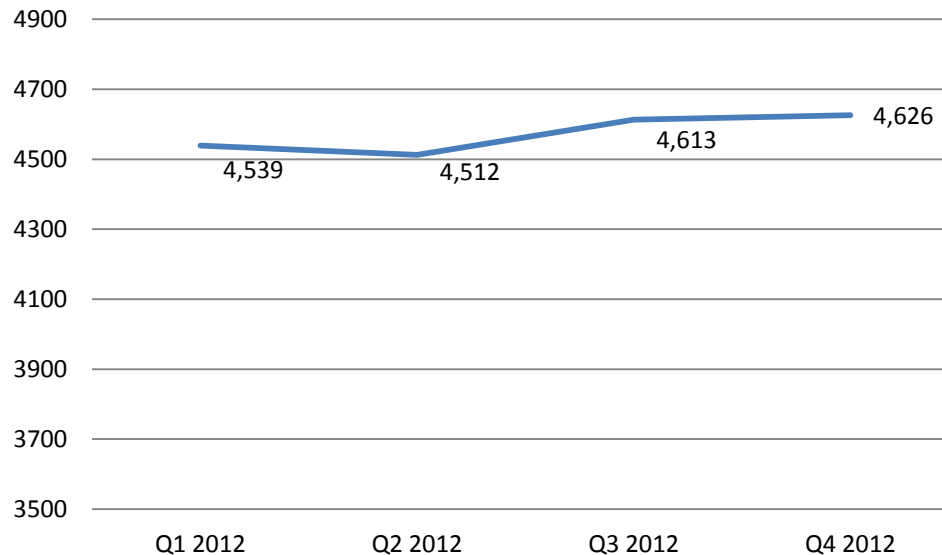
\*The 2011 standards build on 2008 standards, and are better aligned with new health information technology criteria. A [comparison of the two programs](http://www.ncqa.org/Portals/0/Programs/Recognition/PPC-PCMH%202008%20vs%20PCMH%202011Crosswalk%20FINAL.pdf) is available on NCQA's website:  
<http://www.ncqa.org/Portals/0/Programs/Recognition/PPC-PCMH%202008%20vs%20PCMH%202011Crosswalk%20FINAL.pdf>





The number of PCMH providers in the statewide program has grown by a modest amount in 2012, as seen in the following graph.

**Growth in PCMH Providers by Quarter**





Of the primary care providers that participate with Medicaid Managed Care (MMC), 24% are medical home providers (Table 3). Table 4 shows the breakdown of specialty among MMC providers (not necessarily Primary Care Providers /PCPs) within four primary care specialty areas.

**Table 3: Proportion of all PCPs in MMC that are PCMH recognized**

<b>PCPs on PCP Roster File: Q3 2012</b>	16,041
<b>PCPs on Roster File that are PCMHs: Q3 2012</b>	3,837 (24%)

**Table 4: MMC Providers by Specialty (Source: Q3 2012 PNDS)**

<b>Primary Care Specialty</b>	<b>Number of Providers</b>	<b>Percent of Total</b>
<b>Pediatrics</b>	5,359	24
<b>Family Medicine</b>	5,466	24
<b>Internal Medicine</b>	11,285	50
<b>Med-Peds (Combined Internal Medicine and Pediatrics)</b>	247	2
<b>Total number of MMC Primary Care Doctors</b>	20,724	100%



**Redesigning**  
THE MEDICAID PROGRAM



# Section 2: Enrollee Information



**Medicaid Fee for Service (FFS):** There were 44,747 unique Medicaid FFS recipients that had a qualifying visit (visits triggering an add-on payment) with a PCMH provider in New York State in Q3 2012.

**Medicaid Managed Care:** Table 5 shows the age demographics\* of MMC enrollees assigned to PCPs in Patient Centered Medical Homes.

**Table 5: Age Demographics of MMC Enrollees Assigned to PCMH PCPs**

Less than 21	48%
21-54	43%
55-64	8%
65-74	1%
75-84	<1%
85+	<1%

\*Demographic data presented in Table 5 is based on beneficiaries in MMC assigned to a PCP in Q2 2012 and age as of November 2012. Table 5 will be updated annually.



Table 6 shows the number of MMC enrollees assigned to PCMH recognized PCPs by level in Q3 2012\*. Forty (40) percent of the Medicaid Managed Care beneficiaries in the state are assigned to PCMH providers as of Q3 2012.

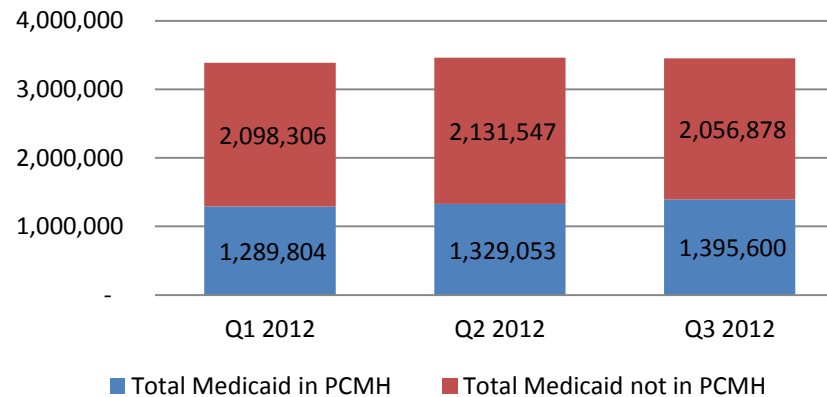
<b>September 2012 NQCA file and Q3 Panel</b>		<b>% of Sub-Total</b>
<b>MMC enrollees in NYS assigned to level 3 PCMH PCPs:</b>	1,120,491	80%
<b>MMC enrollees in NYS assigned to level 2 PCMH PCPs:</b>	50,402	4%
<b>MMC enrollees in NYS assigned to level 1 PCMH PCPs:</b>	224,707	16%
<b>Subtotal</b>	1,395,600	100%
<b>Total MMC enrollees in NYS:</b> 3,452,478		
<b>Penetration Rate (Subtotal / Total):</b>	40%	

\*This was derived using plan-reported panel data from Q3 with the NCQA recognized provider lists from July-September 2012.



The number of MMC enrollees assigned to Medical Home PCPs has continued to climb each quarter, as shown in Table 7.

### Growth in MMC Enrollees Assigned to PCMH PCPs



	Q1 2012	Q2 2012	Q3 2012
Total Medicaid Managed Care (MMC) in PCMH	1,289,804	1,329,053	1,395,600
Medicaid Managed Care (MMC) Total	3,388,110	3,460,600	3,452,478
Penetration Rate (Total MMC in PCMH / MMC Total)	38%	38%	40%



Table 8 shows the number of Child Health Plus (CHP) Enrollees assigned to PCMH recognized PCPs\*.

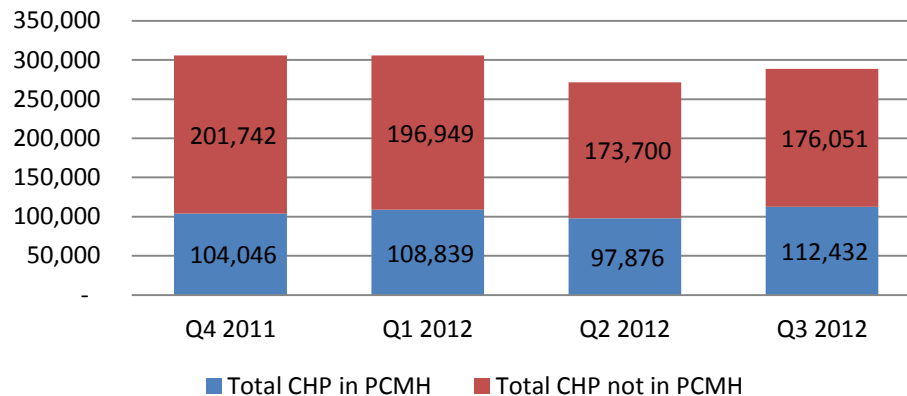
<b>October 2012 NQCA file and Q3 Panel</b>	
<b>CHP enrollees in NYS assigned to level 3 PCMH PCPs:</b>	72,516
<b>CHP enrollees in NYS assigned to level 2 PCMH PCPs:</b>	8,063
<b>CHP enrollees in NYS assigned to level 1 PCMH PCPs:</b>	31,853
<b>Subtotal:</b>	112,432
<b>Total CHP enrollees in NYS:</b>	
	288,483
<b>Penetration Rate (Subtotal / Total):</b>	39%

\*This was derived using Provider Network data from Q3 2012 and the NCQA recognized provider list from October 2012. The data used in table 8 was collected from health plans and may be incomplete; health plans that did not submit Provider Network Data in a timely fashion may not be included in the table.



The PCMH penetration rate in CHP has grown over the last four quarters, as seen in Table 9.

### Growth in CHP Enrollees Assigned to PCMH PCPs



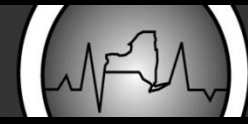
	Q4 2011	Q1 2012	Q2 2012	Q3 2012
Total CHP in PCMH	104,046	108,839	97,876	112,432
Total CHP not in PCMH	201,742	196,949	173,700	176,051
Total CHP Enrollment	305,788	305,788	271,576	288,483
Penetration Rate (Total CHP in PCMH/ Total CHP Enrollment)	34%	36%	36%	39%

The data used in Table 9 was collected from health plans and may be incomplete; health plans that did not submit Provider Network Data in a timely fashion may not be included in the table.





**Redesigning**  
THE MEDICAID PROGRAM



## Section 3: Fiscal Information

The tables in this section include the amounts paid as medical-home ‘add ons’ by Medicaid Managed Care and FFS Medicaid. These figures exclude amounts paid through the [Adirondack Region Medical Home Pilot](#) (ADK).



Table 10 shows the amount spent by MMC and FHP in Q1 through 3 of 2012 (combined) by level of PCMH recognition.

**Table 10: MMC /FHP Medical Home Spending Q1 through 3 2012**

<b>Level 1</b>	\$ 4,628,253
<b>Level 2</b>	\$ 1,874,006
<b>Level 3</b>	\$ 50,342,406
<b>Total</b>	\$ 56,844,665

The amounts in Table 10 reflect the capitation that managed care plans paid to providers for PCMH.



Table 11 shows the amount spent on PCMH ‘add-ons’ in Q3 2012 by FFS Medicaid. Table 12 shows the amount spent on PCMH ‘add-ons’ by FFS Medicaid, year to date.

**Table 11: PCMH add-ons by level for SW FFS Q3 2012**

<b>Level 1</b>	\$61,467
<b>Level 2</b>	\$107,382
<b>Level 3</b>	\$876,519
<b>Total</b>	\$1,333,262

**Table 12: PCMH add-ons by level for SW FFS, 2012 YTD (Q1, Q2, Q3)**

<b>Level 1</b>	\$226,500
<b>Level 2</b>	\$381,225
<b>Level 3</b>	\$2,842,779
<b>Total</b>	\$3,450,504



# Links

- About NCQA's Patient Centered Medical Home Recognition:  
<http://www.ncqa.org/Programs/Recognition/PatientCenteredMedicalHomePCMH.aspx>
- Joint Principles of the Patient Centered Medical Home:  
<http://www.medicalhomeinfo.org/downloads/pdfs/jointstatement.pdf>



**Redesigning**  
THE MEDICAID PROGRAM



Questions?

Contact:

Office of Quality and Patient Safety

NYS DOH

[pcmh@health.state.ny.us](mailto:pcmh@health.state.ny.us)