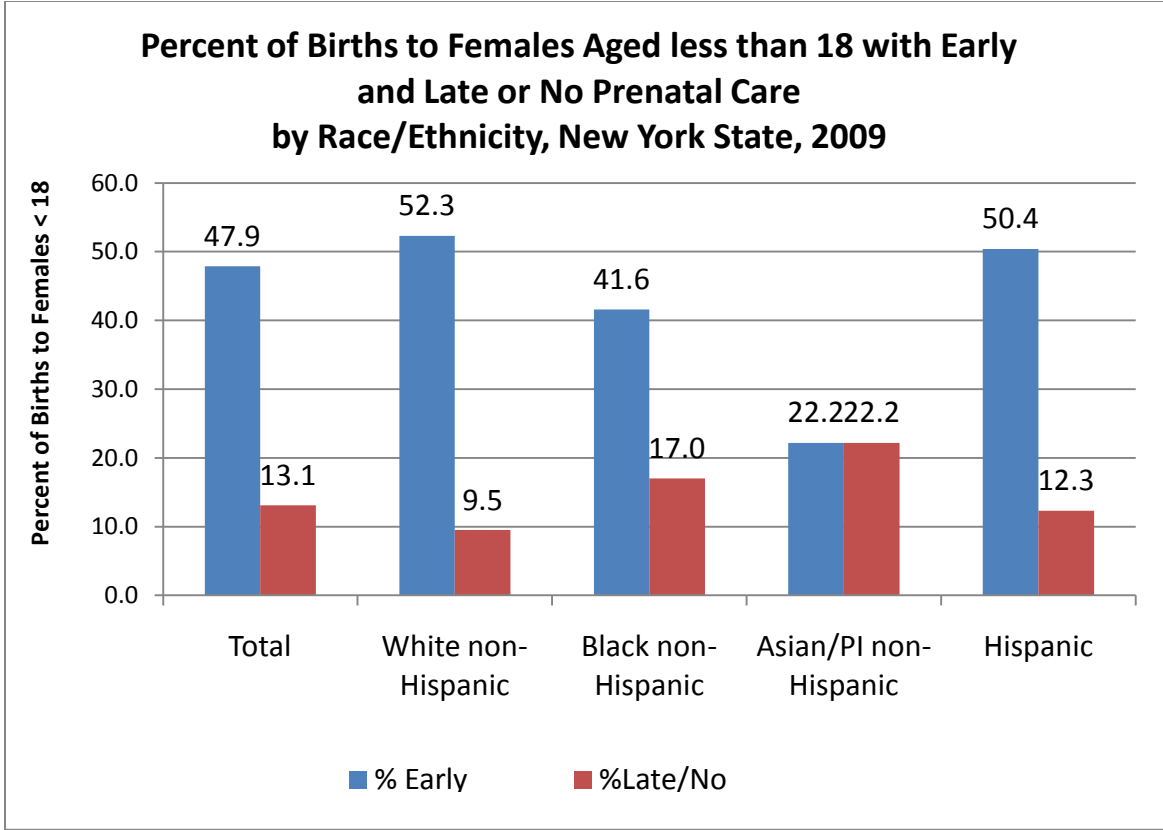


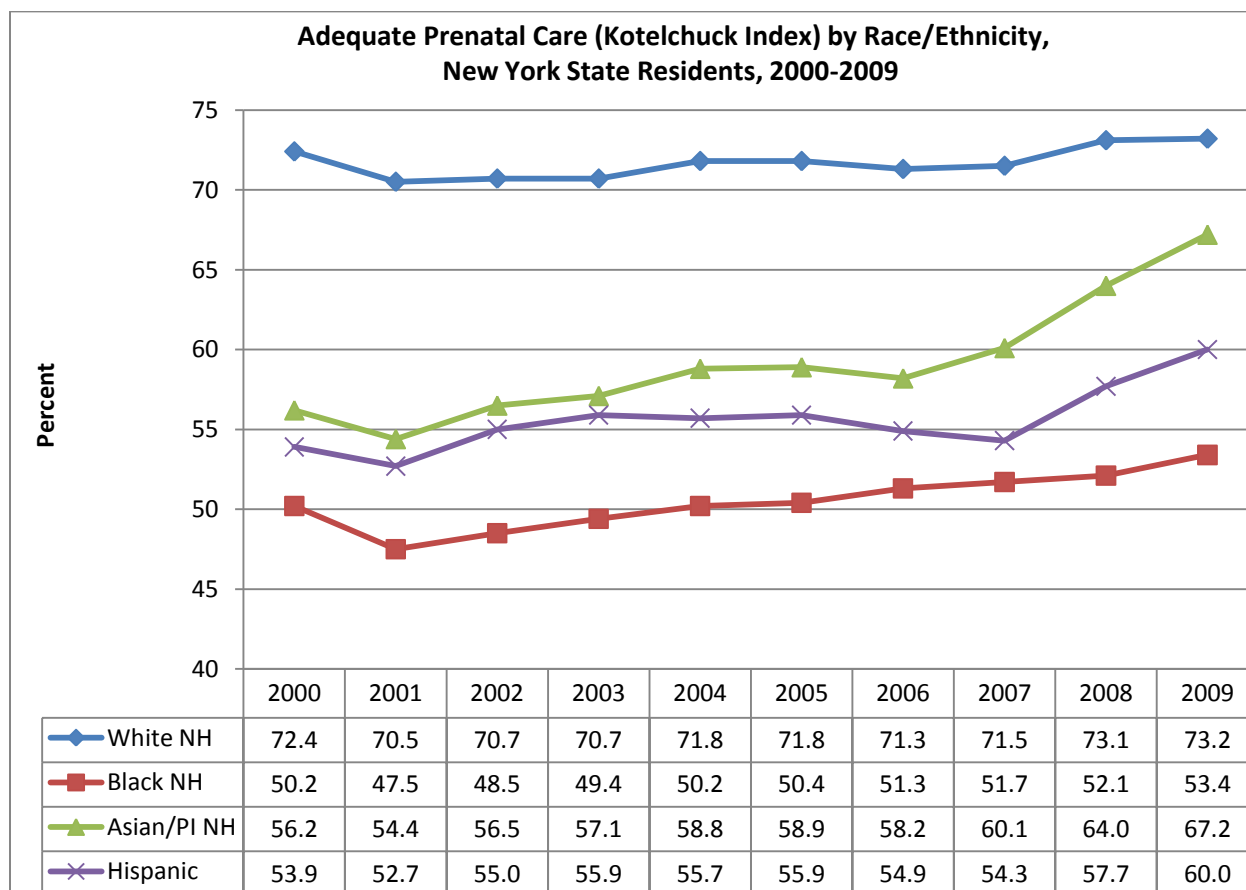
Source: Vital Records, NYSDOH Bureau of Biometrics and Health Statistics



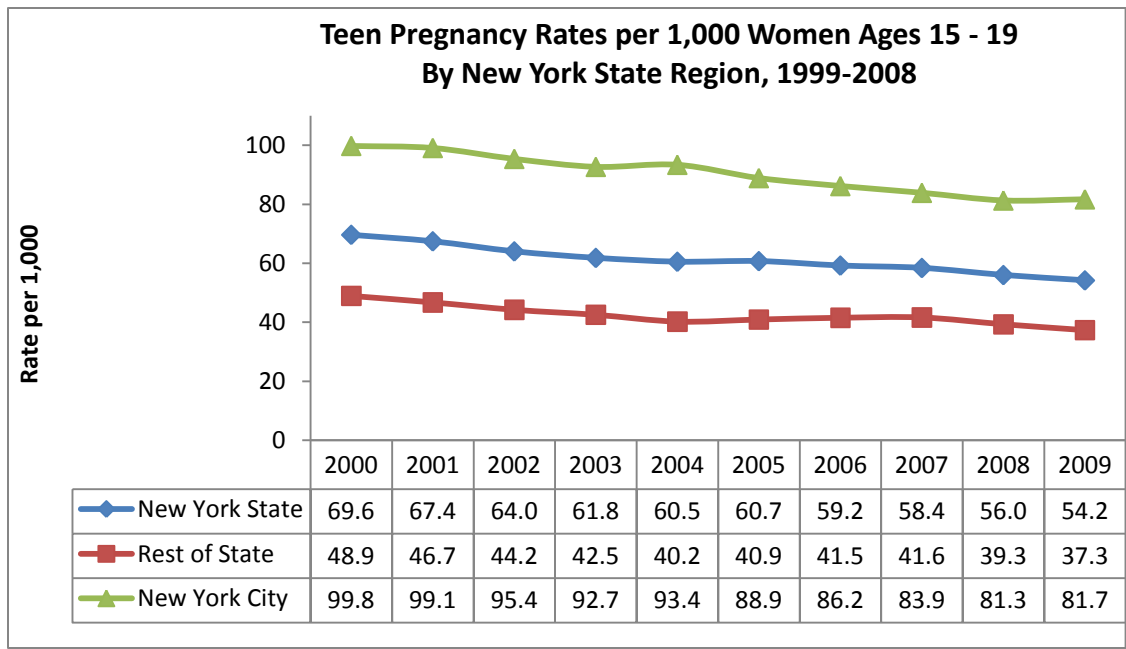
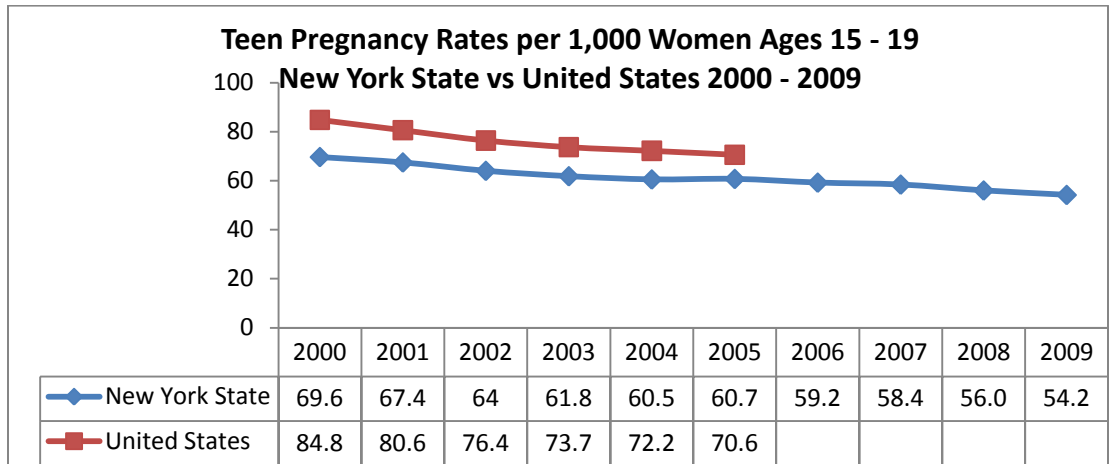
Source: Vital Records, NYSDOH Bureau of Biometrics and Health Statistics

Note: Kotelchuck Index is a calculation based on the number of prenatal care visits received by pregnant women who had a live birth during the reporting year, expressed as a percentage of observed-to-expected number of prenatal visits. Adequate prenatal care is defined as completion of greater than 80% of expected visits.

| Adequacy of Prenatal Care as demonstrated by Kotelchuck Index | | | | | | | | | | | |
|--|----------------------|------|------|------|------|------|------|------|------|------|------|
| New York State Births By Region | | | | | | | | | | | |
| 2000 through 2009 | | | | | | | | | | | |
| Year → | | '00 | '01 | '02 | '03 | '04 | '05 | '06 | '07 | '08 | '09 |
| | New York City | 57.6 | 56.6 | 56.5 | 57.8 | 59.9 | 59.5 | 59.8 | 58.0 | 61.7 | 64.4 |
| | Rest of State | 72.3 | 69.7 | 69.9 | 67.6 | 72.7 | 73.2 | 71.8 | 68.9 | 69.0 | 67.6 |
| | Total NYS | 65.6 | 63.5 | 63.6 | 63.1 | 66.4 | 66.5 | 65.9 | 63.5 | 65.5 | 66.0 |

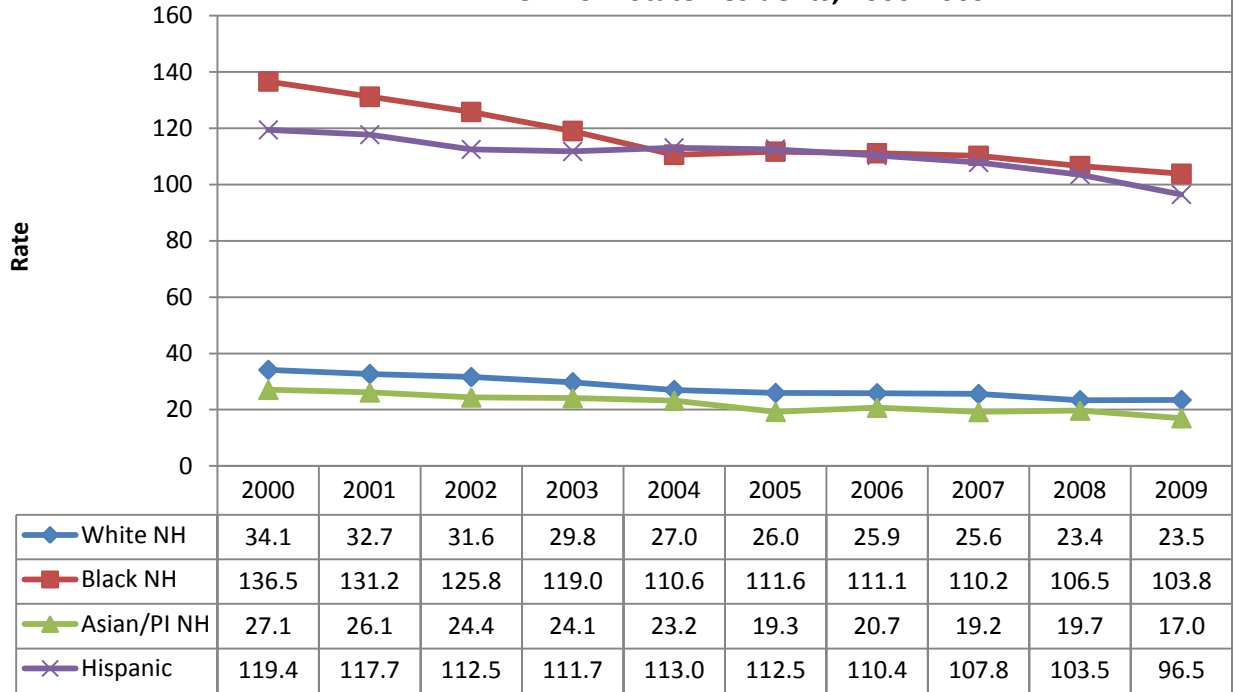


Source: Vital Records, NYSDOH Bureau of Biometrics and Health Statistics

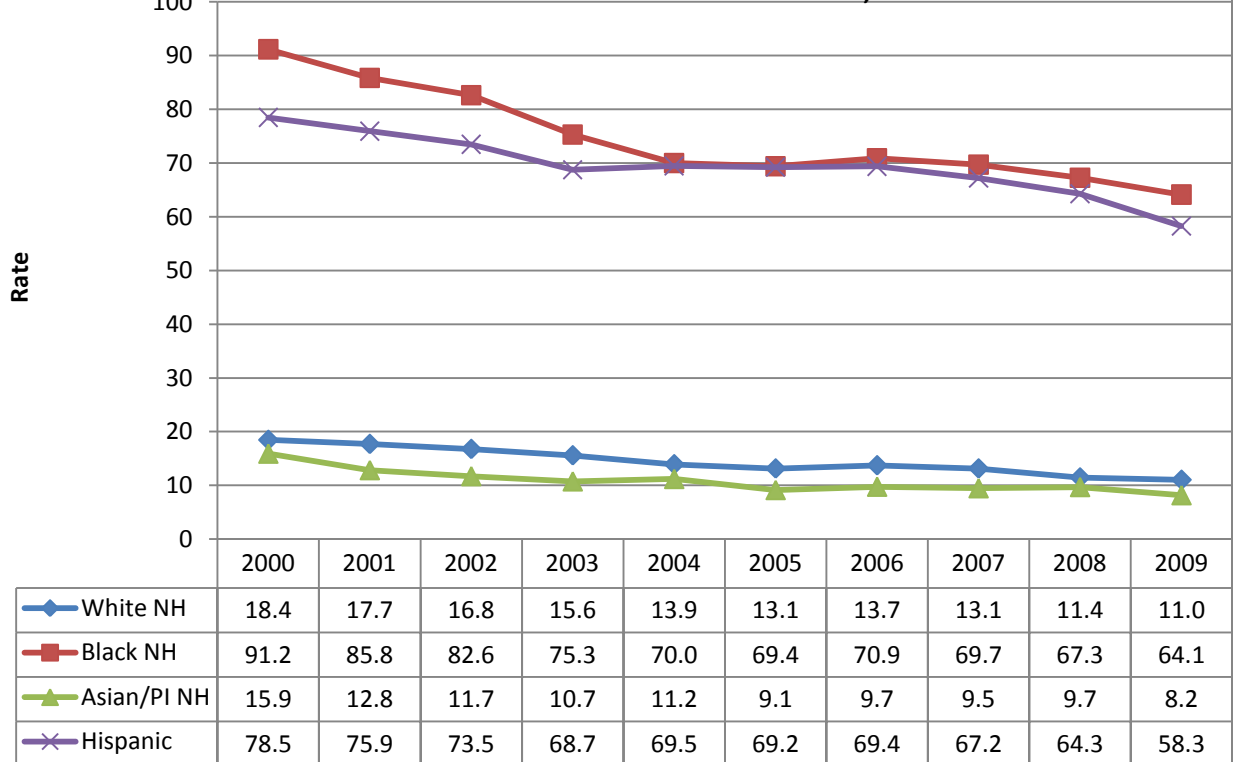


Source: Vital Records, NYSDOH Bureau of Biometrics and Health Statistics

Teen (Age 15-19) Pregnancies per 1,000 Females 15-19 by Race/Ethnicity, New York State Residents, 2000-2009

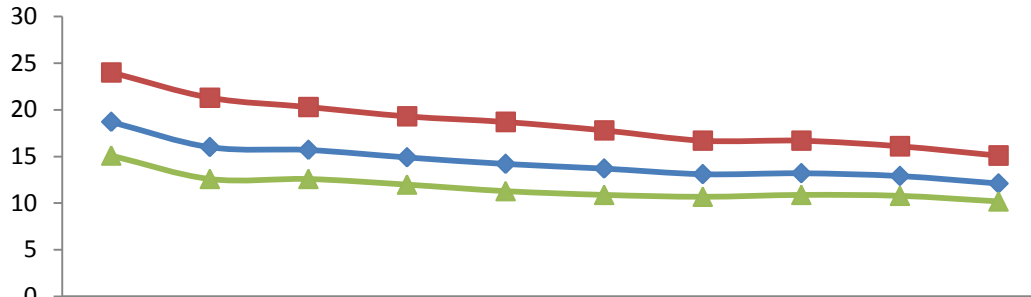


Teen (Age 15-17) Pregnancies per 1,000 Females 15-17 by Race/Ethnicity, New York State Residents, 2000-2009



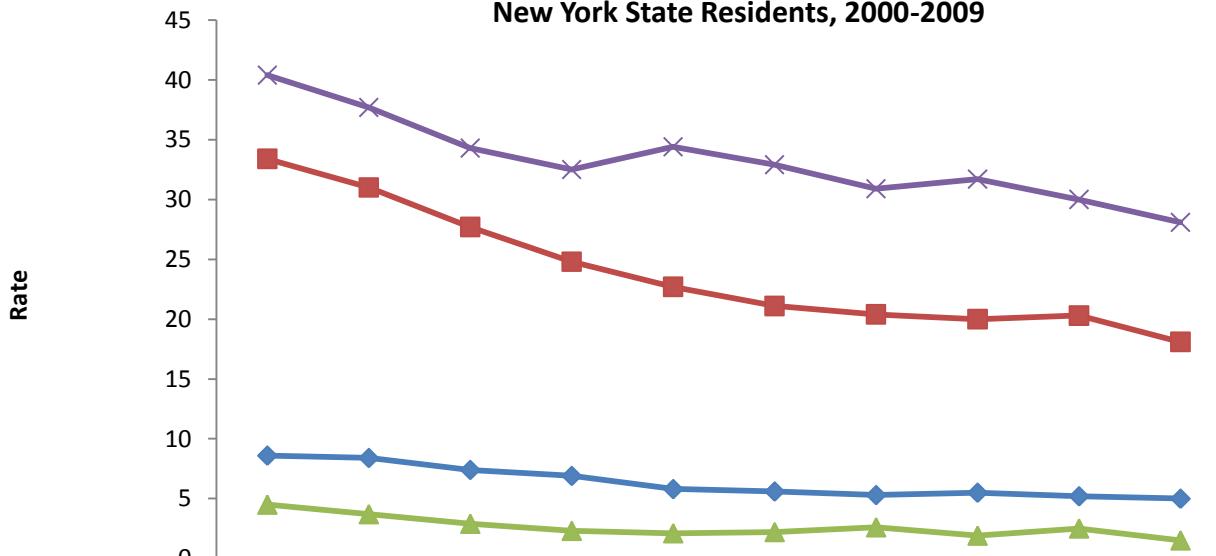
Source: Vital Records, NYSDOH Bureau of Biometrics and Health Statistics

**Births per 1,000 Females Ages 15 - 17
New York State by Region 2000 - 2009**



| | 2000 | 2001 | 2002 | 2003 | 2004 | 2005 | 2006 | 2007 | 2008 | 2009 |
|------------------|------|------|------|------|------|------|------|------|------|------|
| ◆ New York State | 18.7 | 16 | 15.7 | 14.9 | 14.2 | 13.7 | 13.1 | 13.2 | 12.9 | 12.1 |
| ■ New York City | 24 | 21.3 | 20.3 | 19.3 | 18.7 | 17.8 | 16.7 | 16.7 | 16.1 | 15.1 |
| ▲ Rest of State | 15.1 | 12.6 | 12.6 | 12 | 11.3 | 10.9 | 10.7 | 10.9 | 10.8 | 10.2 |

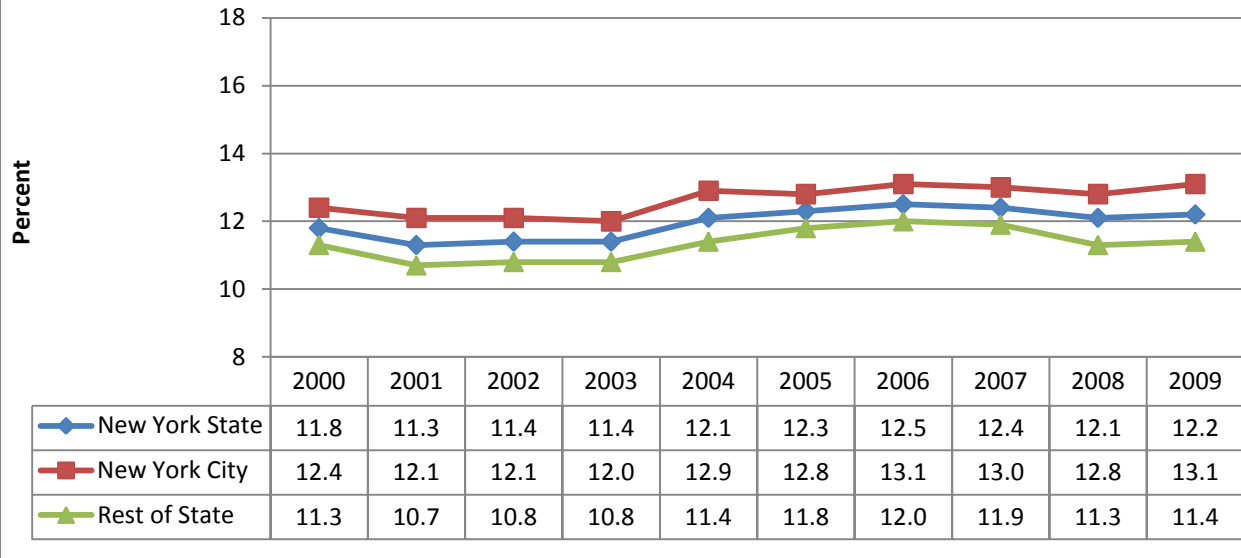
**Teen (Age 15-17) Birth Rate per 1,000 Females 15-17 by Race/Ethnicity,
New York State Residents, 2000-2009**



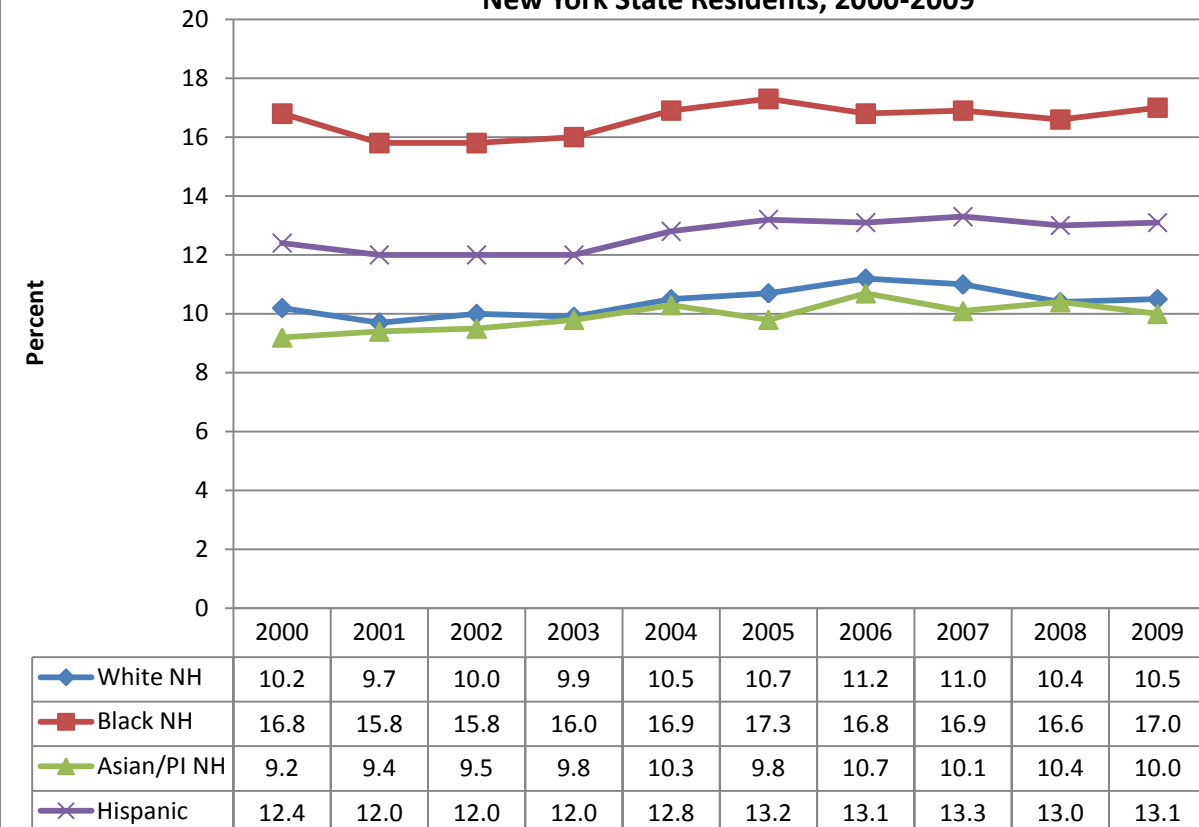
| | 2000 | 2001 | 2002 | 2003 | 2004 | 2005 | 2006 | 2007 | 2008 | 2009 |
|---------------|------|------|------|------|------|------|------|------|------|------|
| ◆ White NH | 8.6 | 8.4 | 7.4 | 6.9 | 5.8 | 5.6 | 5.3 | 5.5 | 5.2 | 5.0 |
| ■ Black NH | 33.4 | 31.0 | 27.7 | 24.8 | 22.7 | 21.1 | 20.4 | 20.0 | 20.3 | 18.1 |
| ▲ Asian/PI NH | 4.5 | 3.7 | 2.9 | 2.3 | 2.1 | 2.2 | 2.6 | 1.9 | 2.5 | 1.5 |
| × Hispanic | 40.4 | 37.7 | 34.3 | 32.5 | 34.4 | 32.9 | 30.9 | 31.7 | 30.0 | 28.1 |

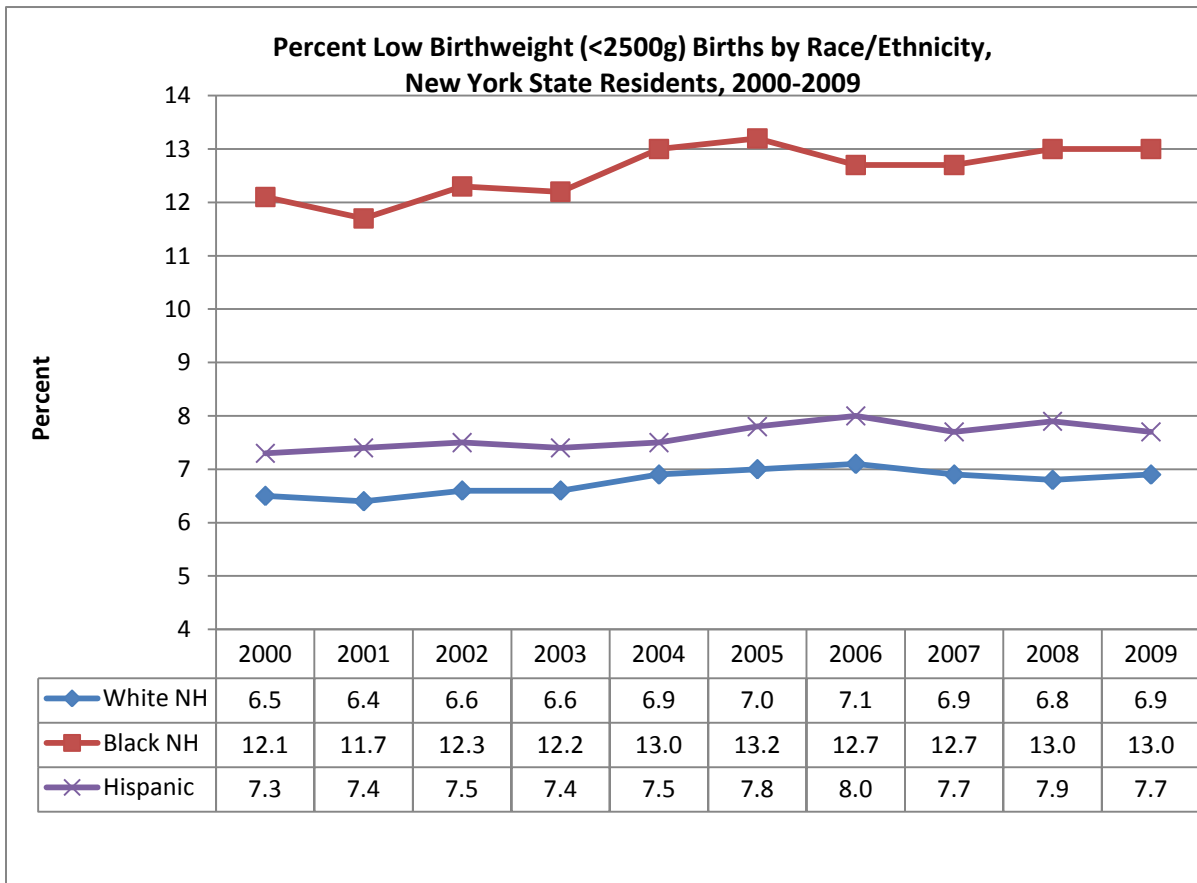
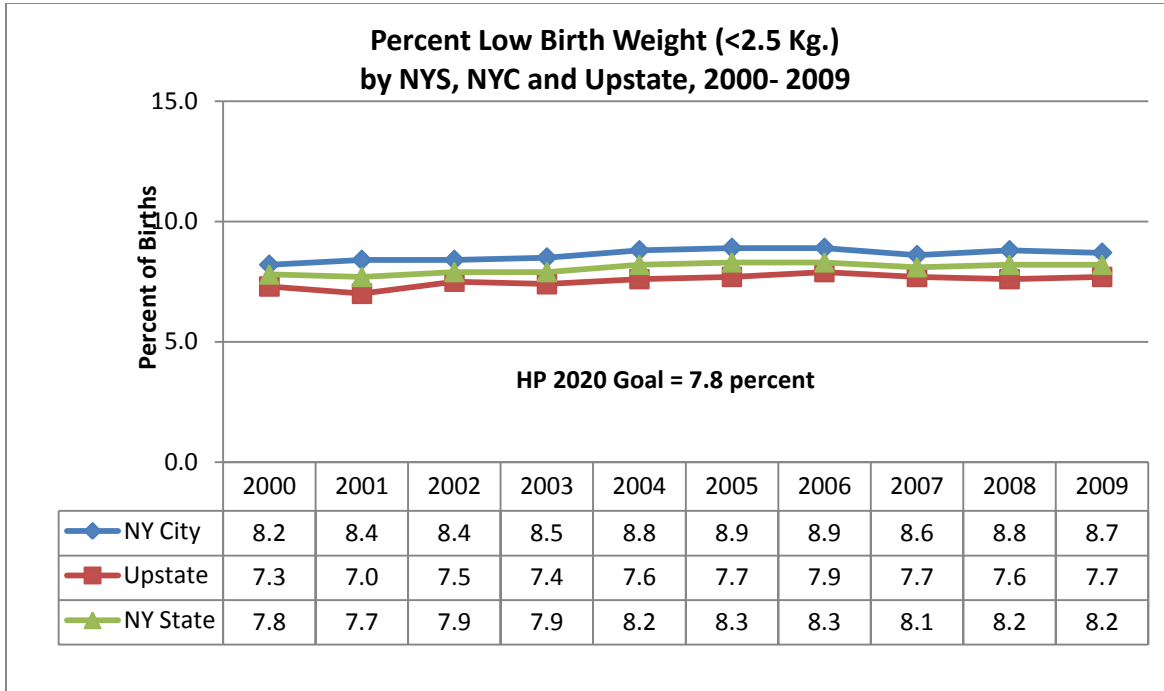
Source: Vital Records, NYSDOH Bureau of Biometrics and Health Statistics

**Percent of Preterm Births (<37 Weeks Gestation)
by Region, New York State, 2000 - 2009**



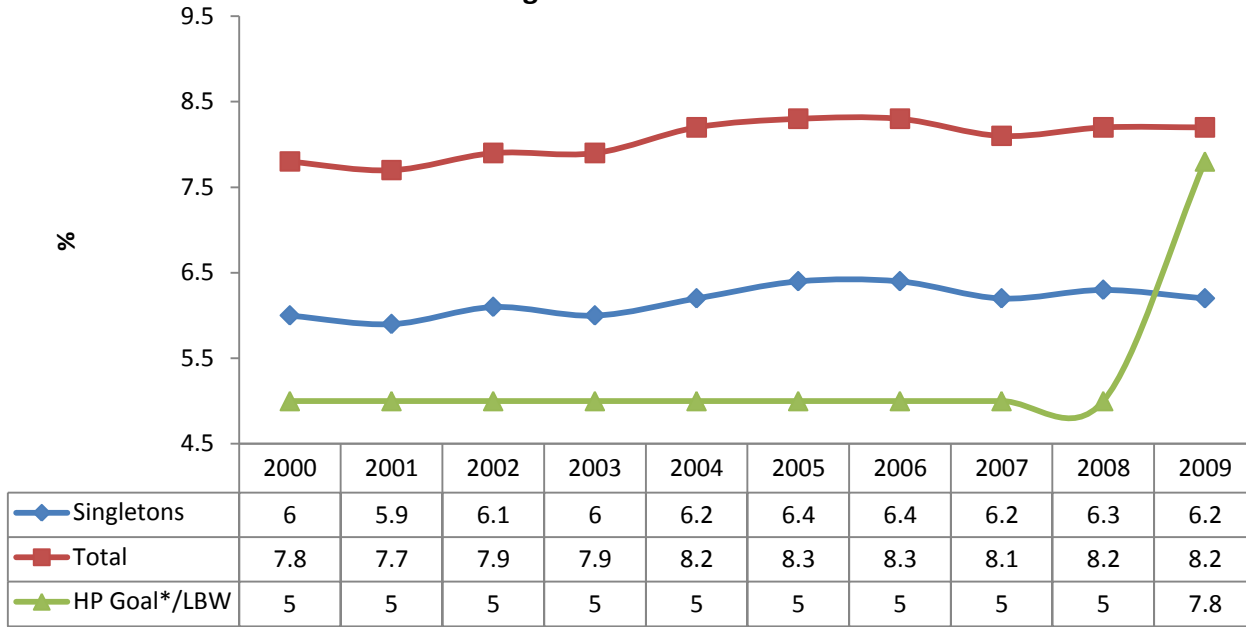
**Percent Premature Births (<37 Weeks Gestation) by Race/Ethnicity,
New York State Residents, 2000-2009**





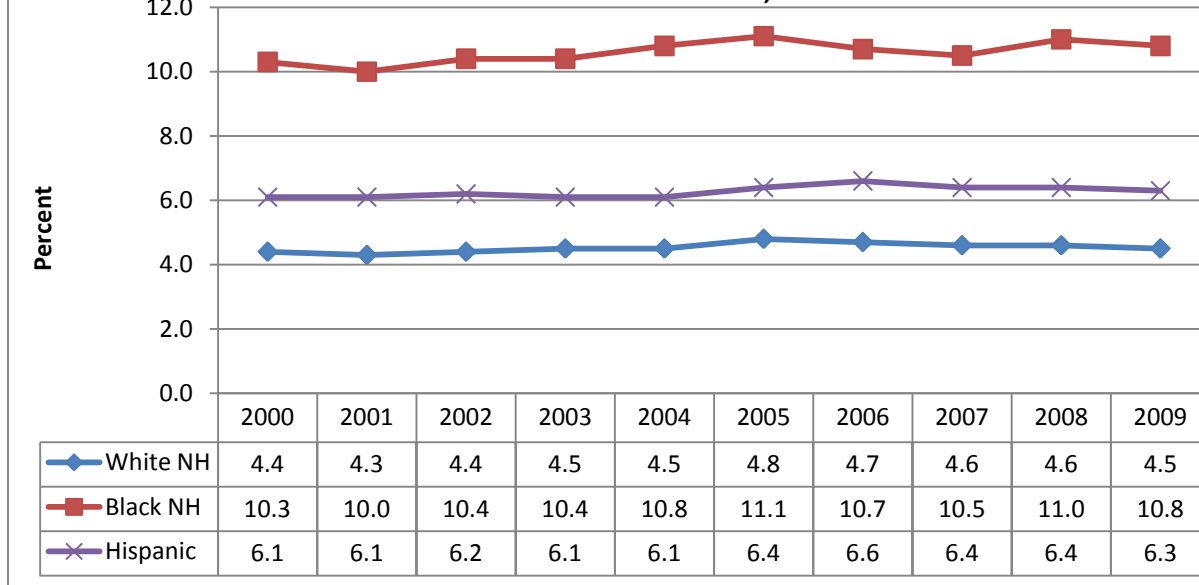
Source: Vital Records, NYSDOH Bureau of Biometrics and Health Statistics

**Percent Low Birth Weight (<2500 gms)
New York Singleton and Total Birth 2000 - 2009**

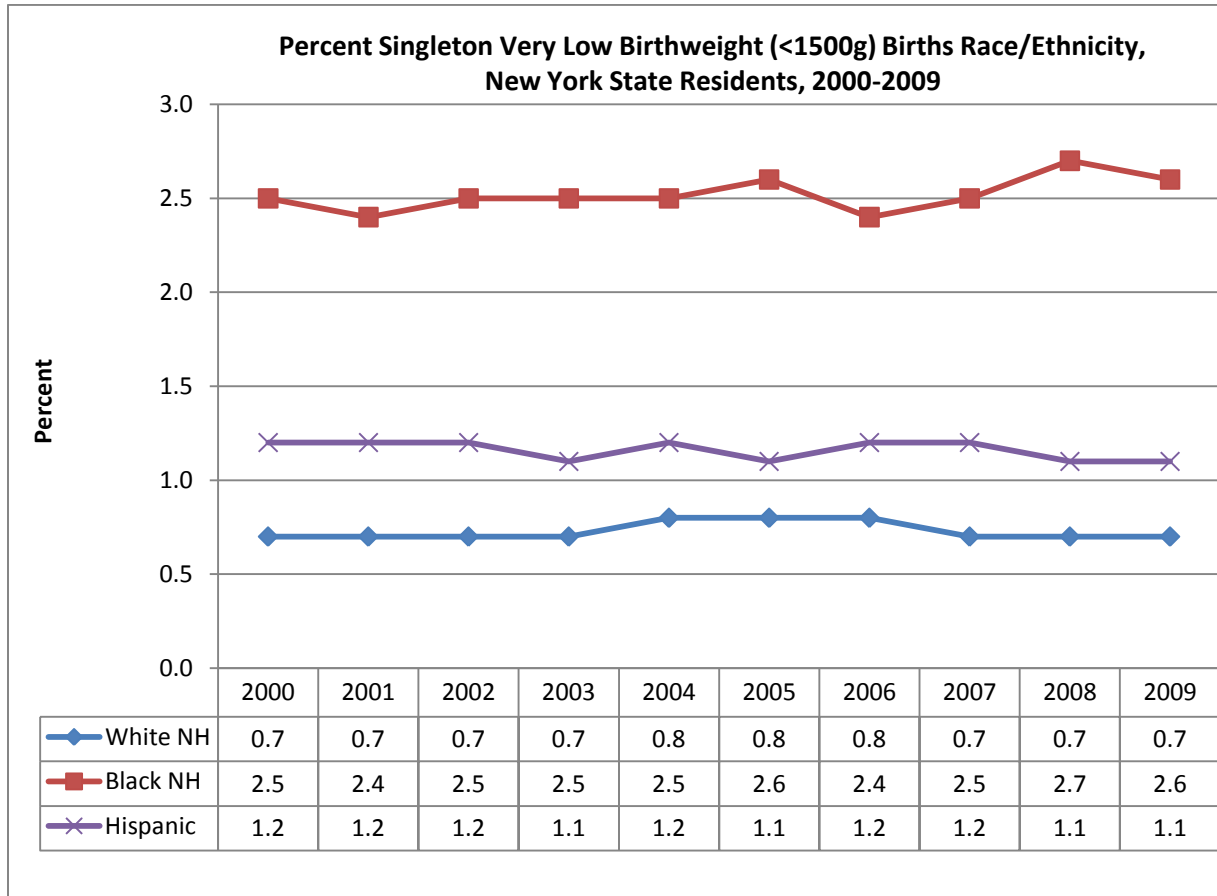
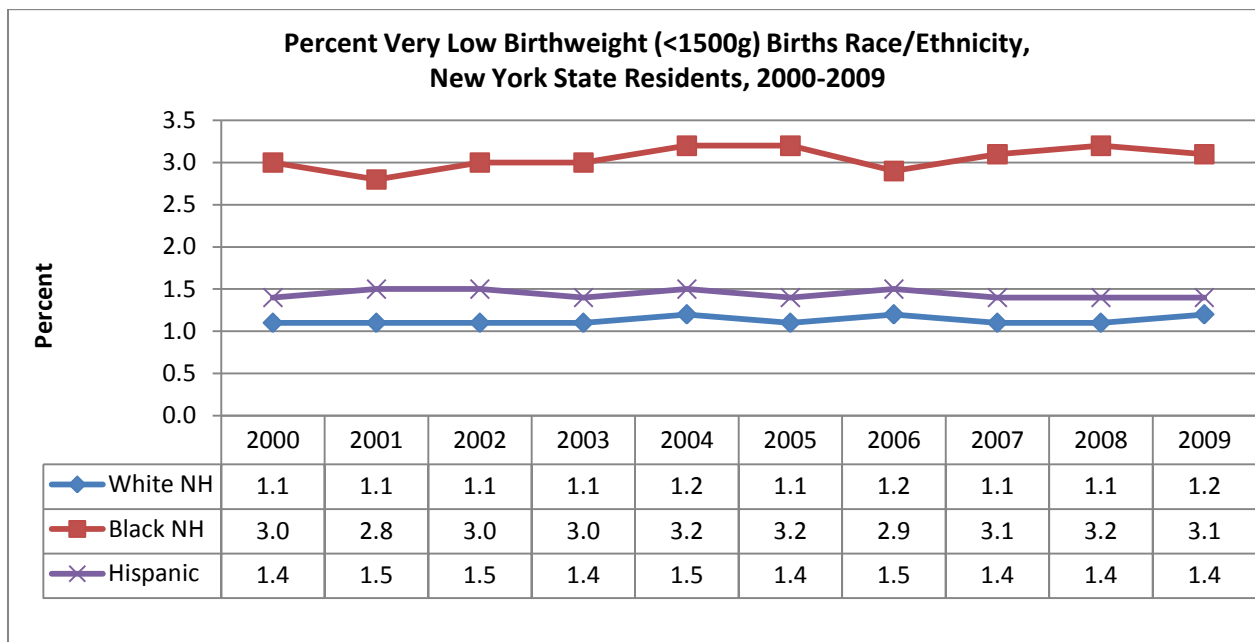


*Healthy People 2010 Goal (2000-2008) / Healthy People 2020 Goal (2009)

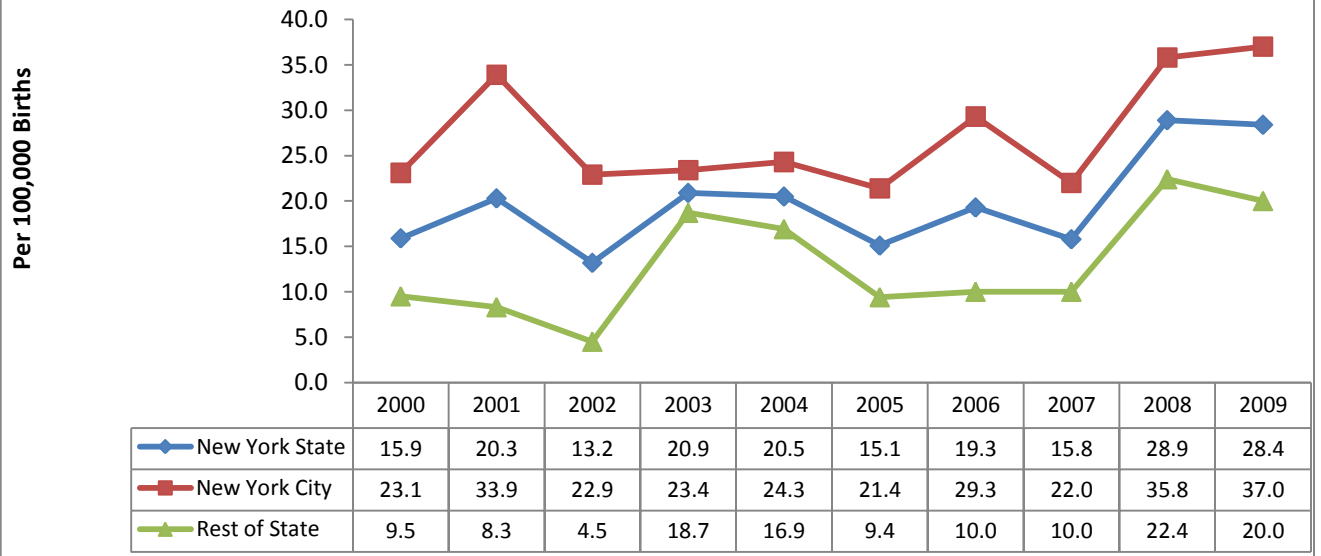
**Percent Singleton Low Birthweight (<2500g) Births Race/Ethnicity,
New York State Residents, 2000-2009**



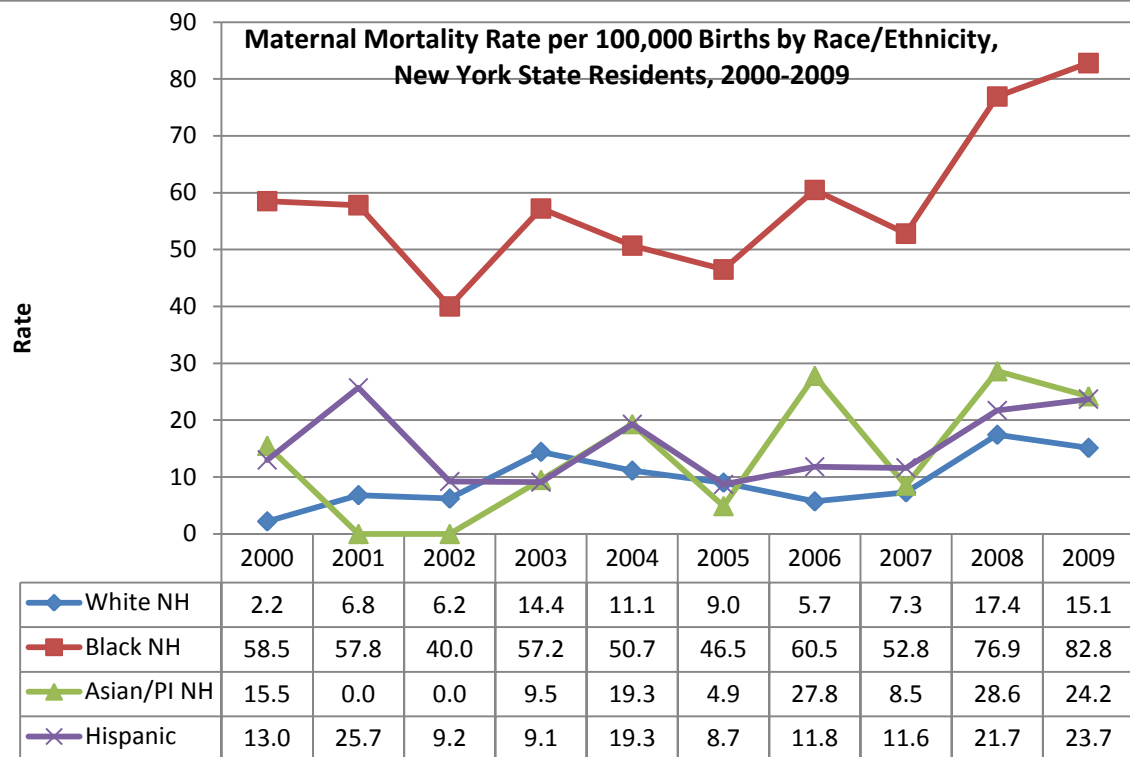
Source: Vital Records, NYSDOH Bureau of Biometrics and Health Statistics



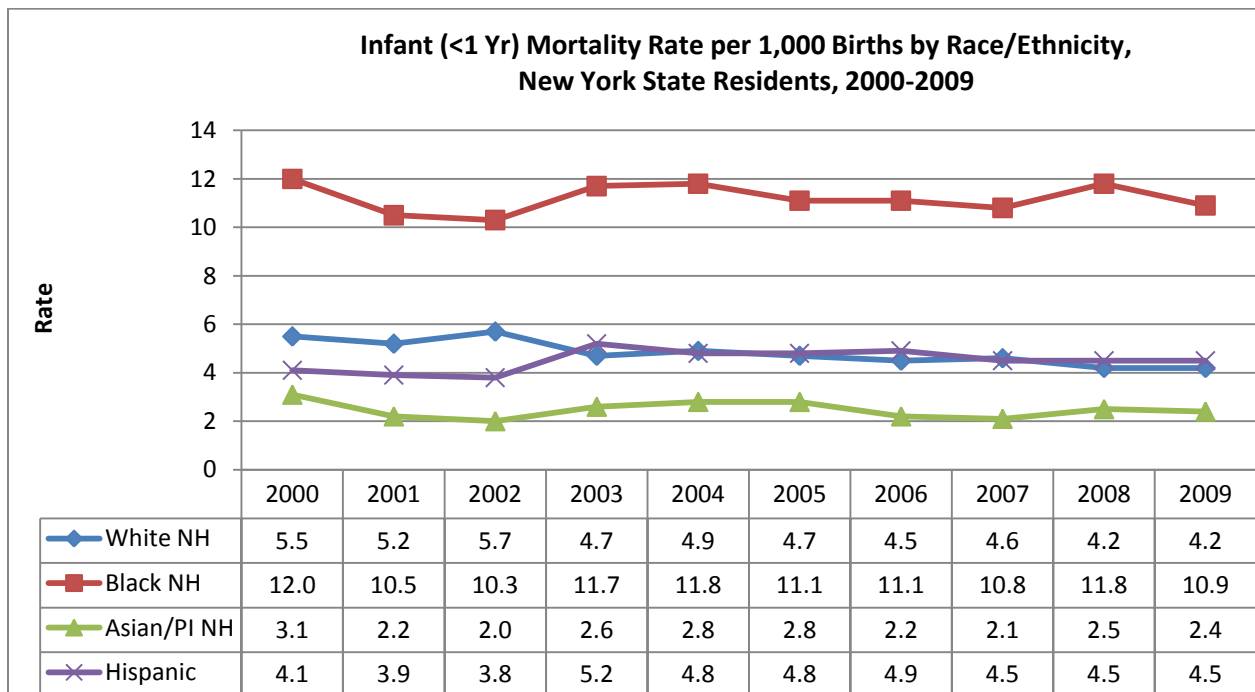
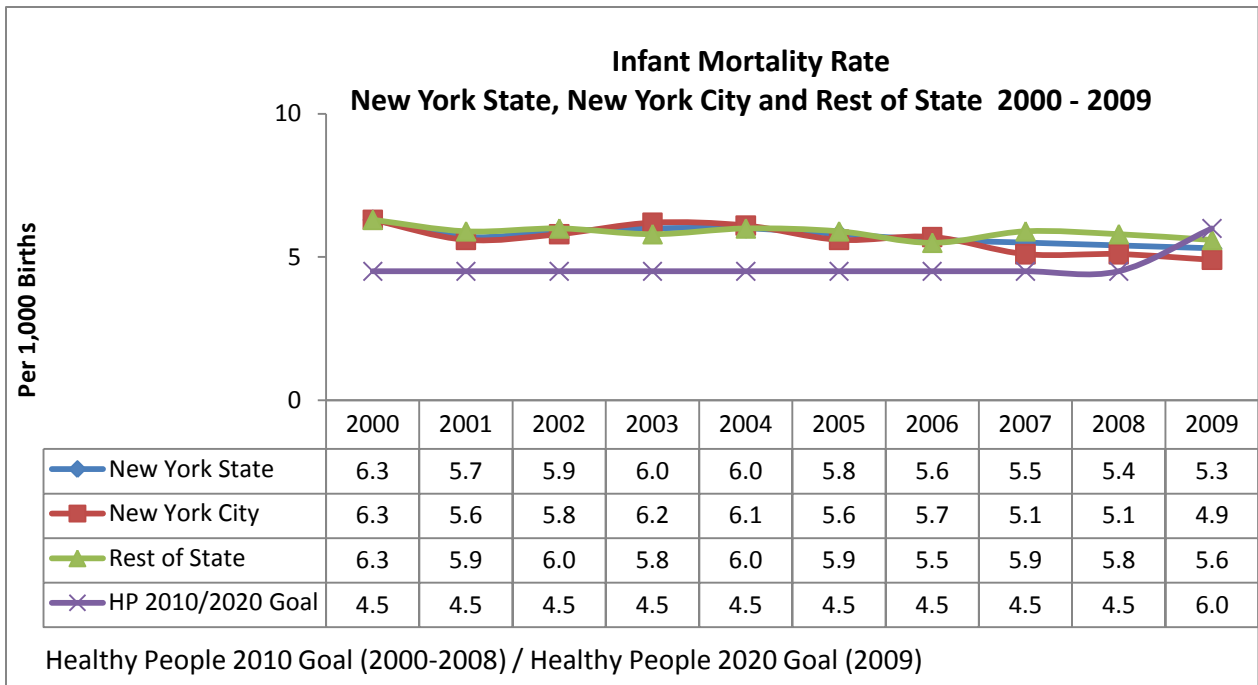
**Maternal Mortality Rate
ICD10 Codes 000 to 099
New York State, New York City and Rest of State 2000 - 2009**



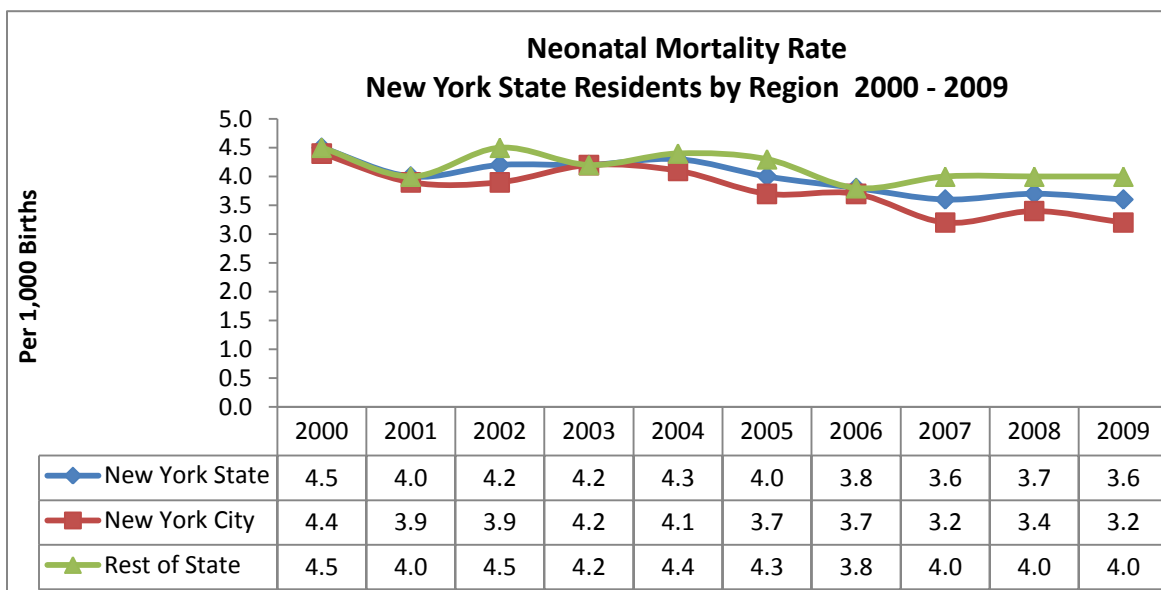
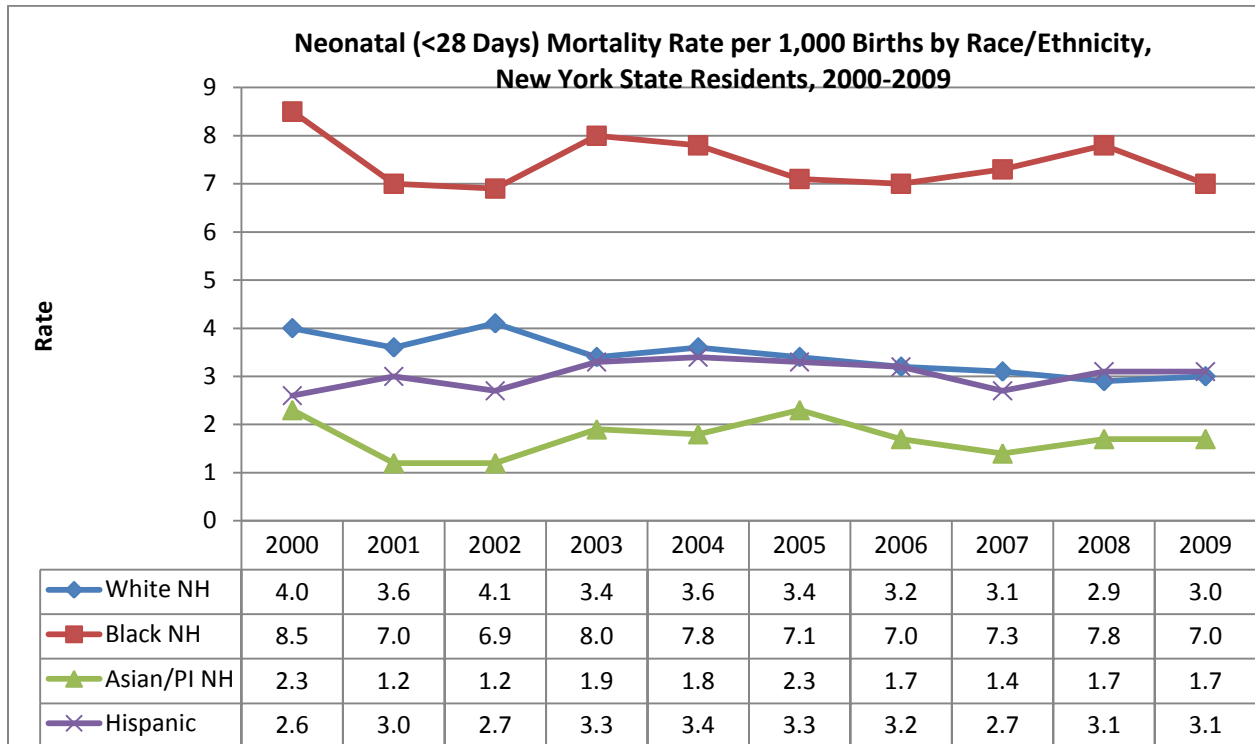
**Maternal Mortality Rate per 100,000 Births by Race/Ethnicity,
New York State Residents, 2000-2009**



Source: Vital Records, NYSDOH Bureau of Biometrics and Health Statistics

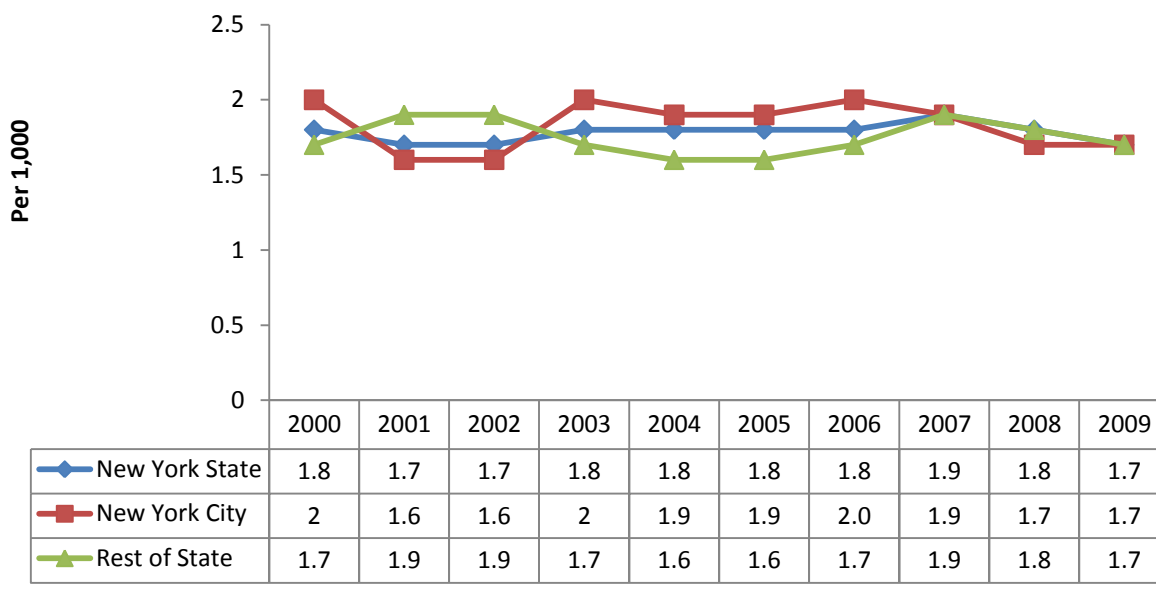


Source: Vital Records, NYSDOH Bureau of Biometrics and Health Statistics

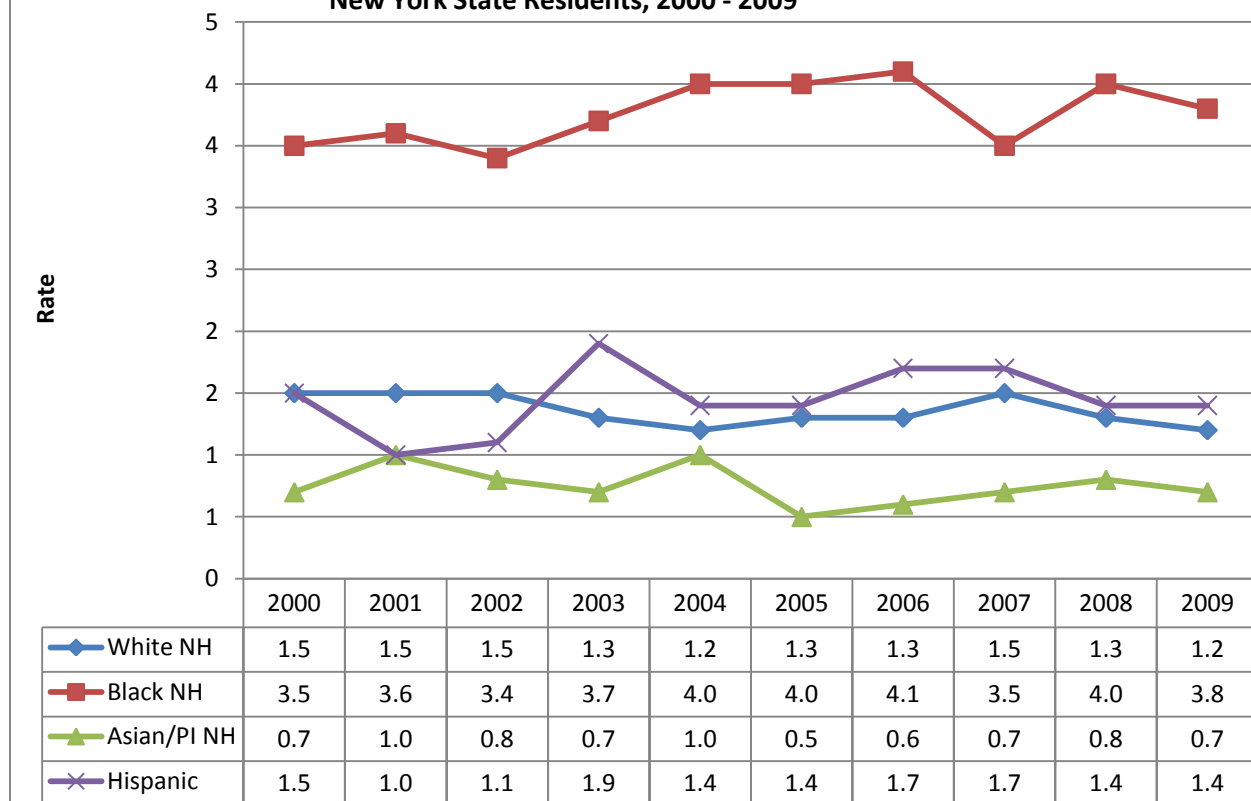


Source: Vital Records, NYSDOH Bureau of Biometrics and Health Statistics

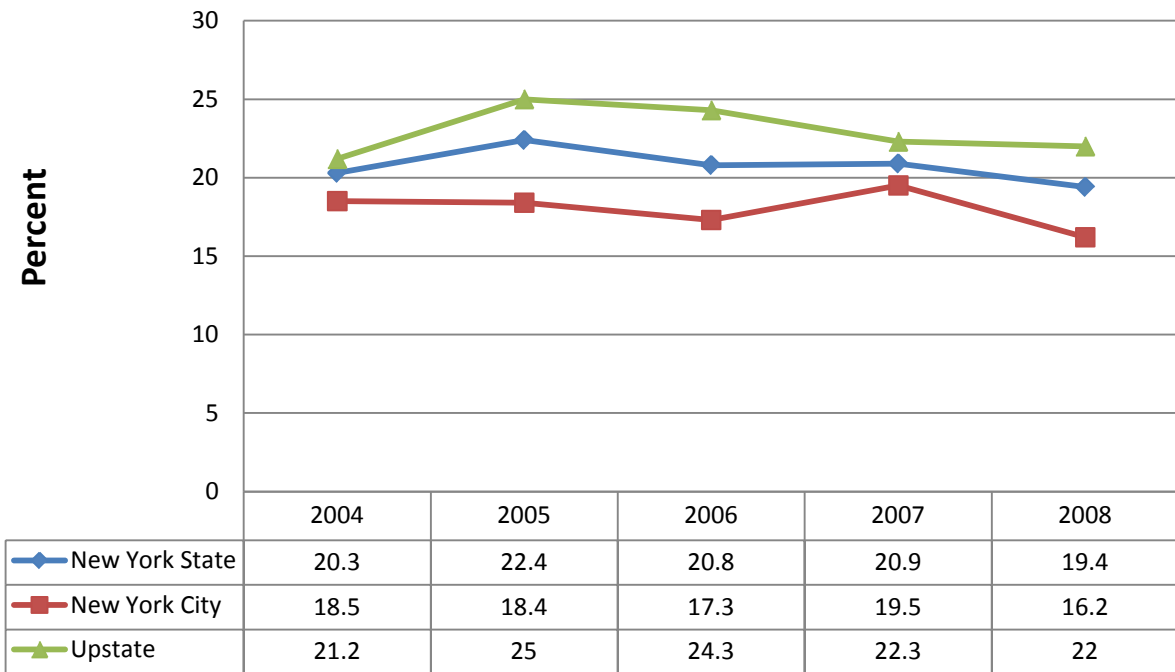
**Postneonatal Mortality
New York State Residents by Region 2000 - 2009**



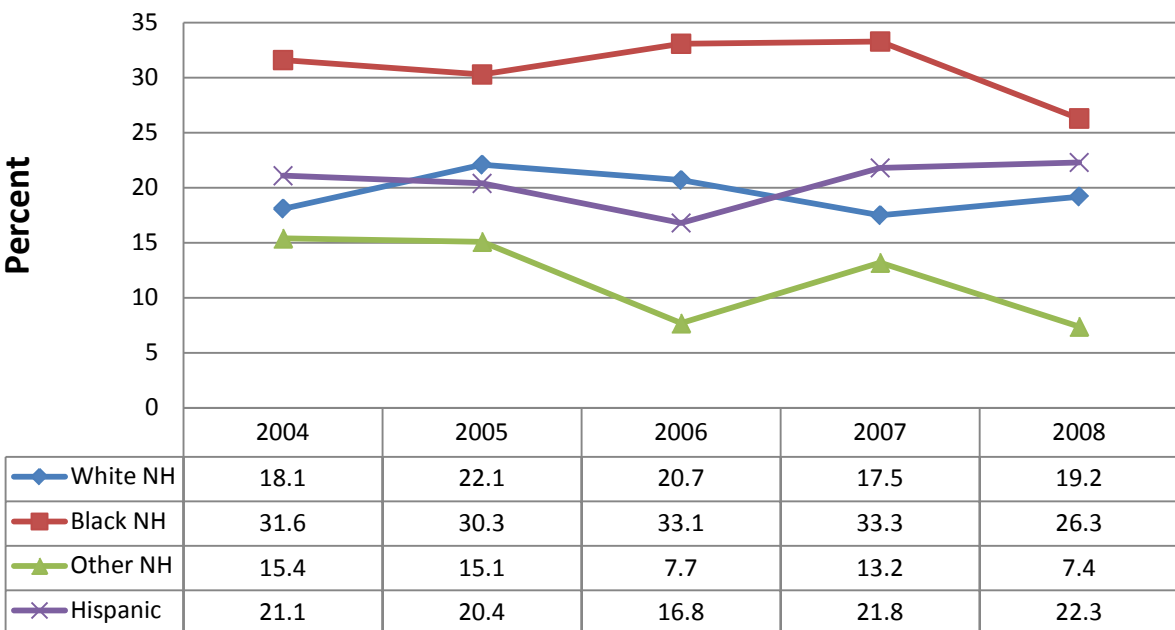
**Postneonatal Mortality by Race/Ethnicity,
New York State Residents, 2000 - 2009**



Percent of Moms Who Were Obese Before Pregnancy by Region, New York State Residents, 2004-2008

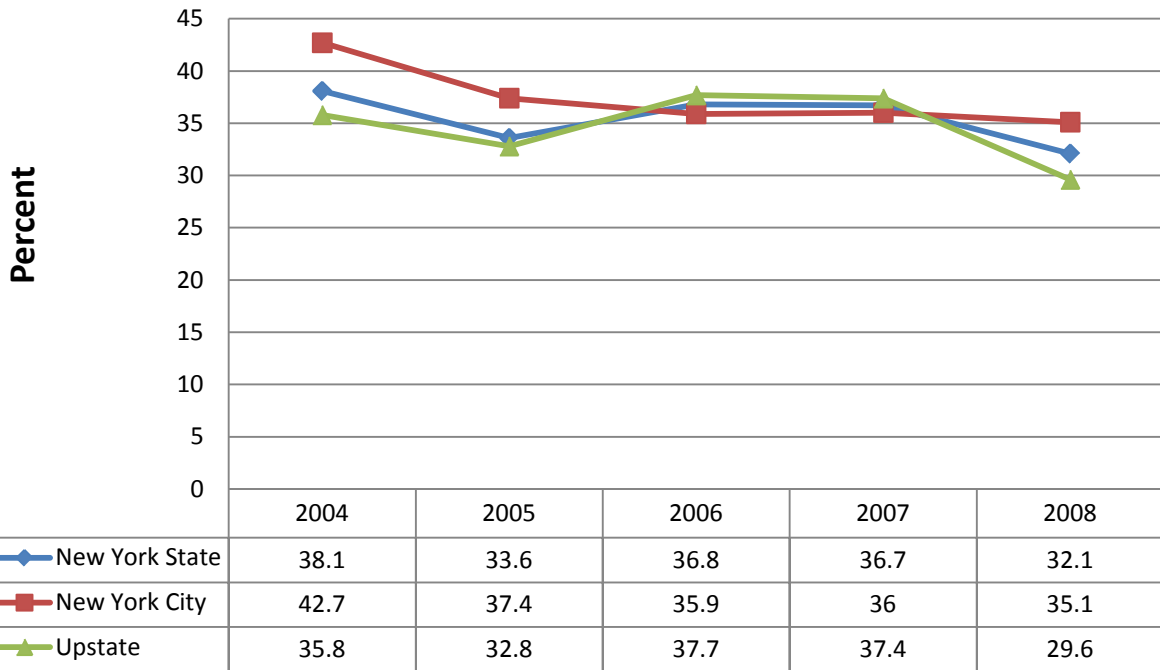


Percent of Moms Who Were Obese Before Pregnancy by Race/Ethnicity, New York State Residents, 2004-2008

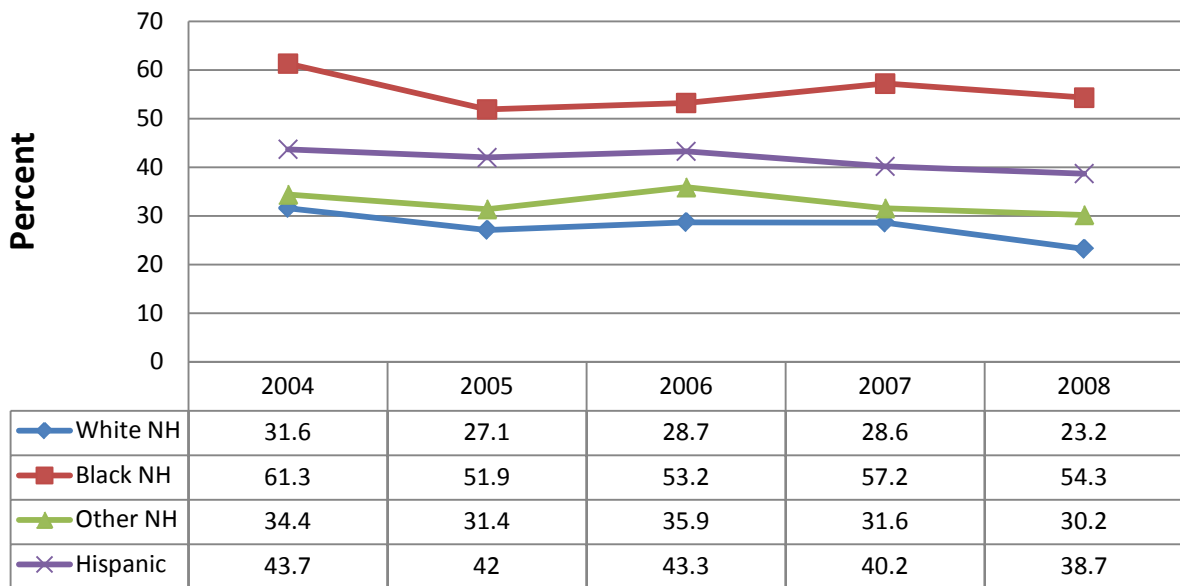


Source: New York State Pregnancy Risk Assessment Monitoring System (PRAMS)

Births Resulting from Unintentional Pregnancy by Region New York State Residents, 2004-2008

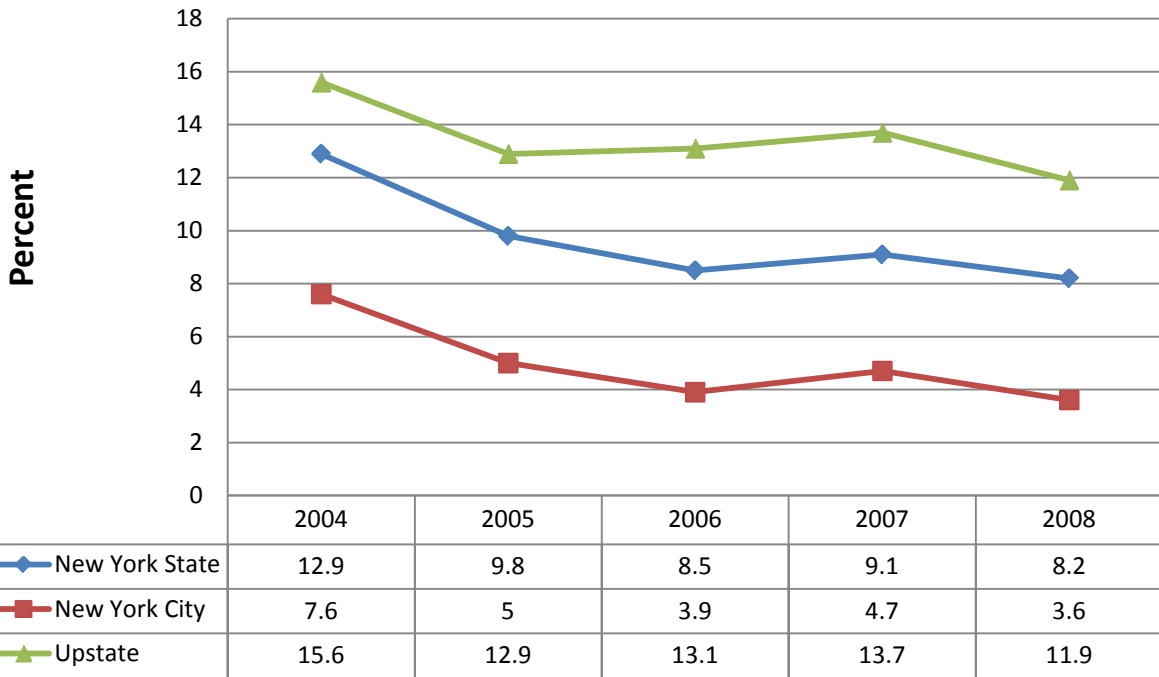


Births Resulting From Unintentional Pregnancy by Race/Ethnicity New York State Residents, 2004-2008

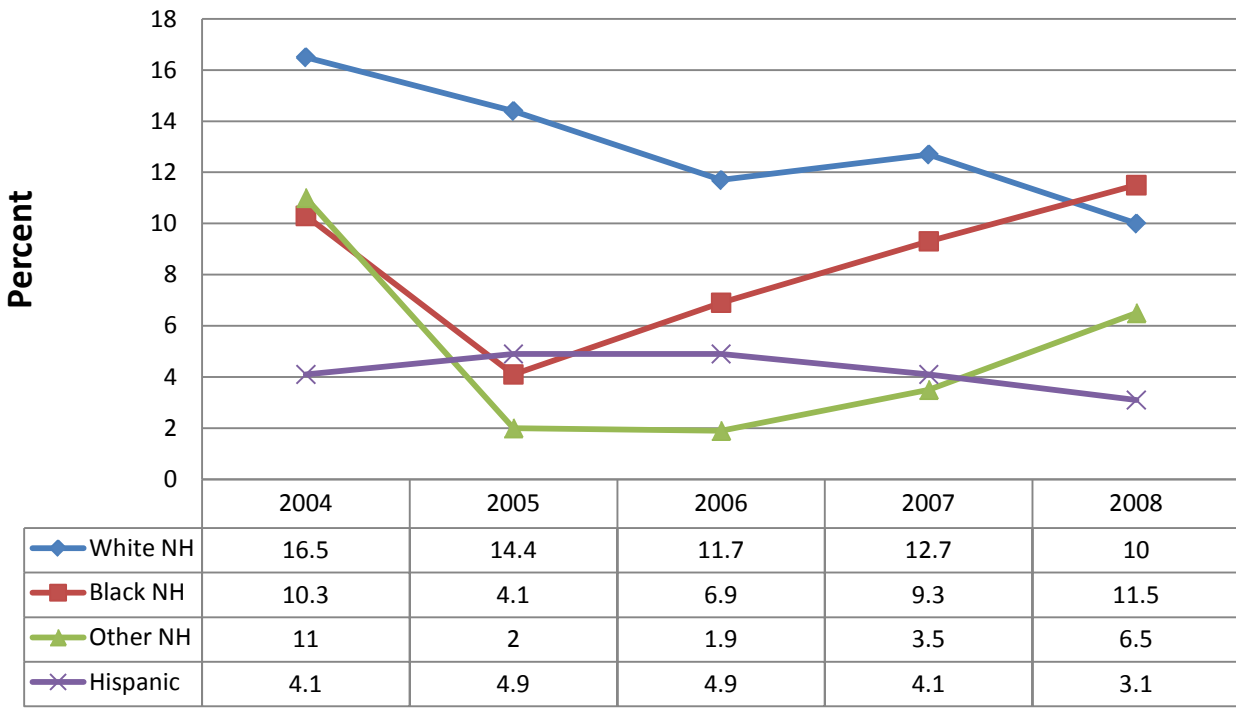


Source: New York State Pregnancy Risk Assessment Monitoring System (PRAMS)

Percent of Moms Who Smoked During Last 3 Months of Pregnancy by Region, New York State Residents, 2004-2008

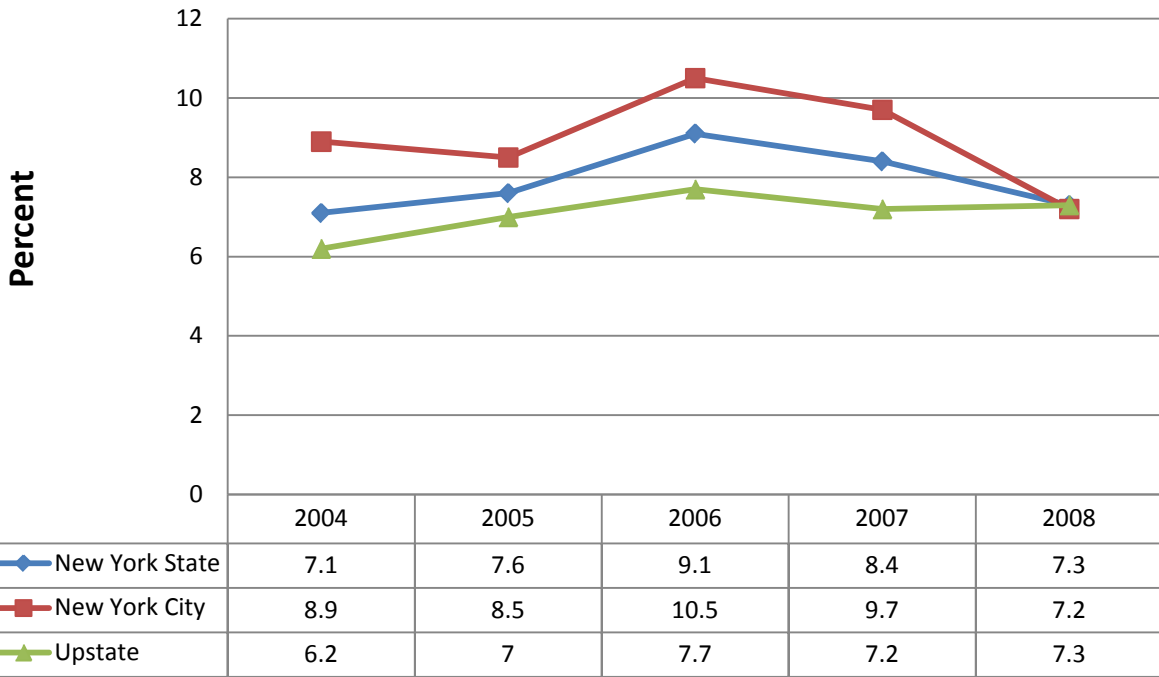


Percent of Moms Who Smoked during Last 3 Months of Pregnancy by Race/Ethnicity, New York State Residents, 2004-2008

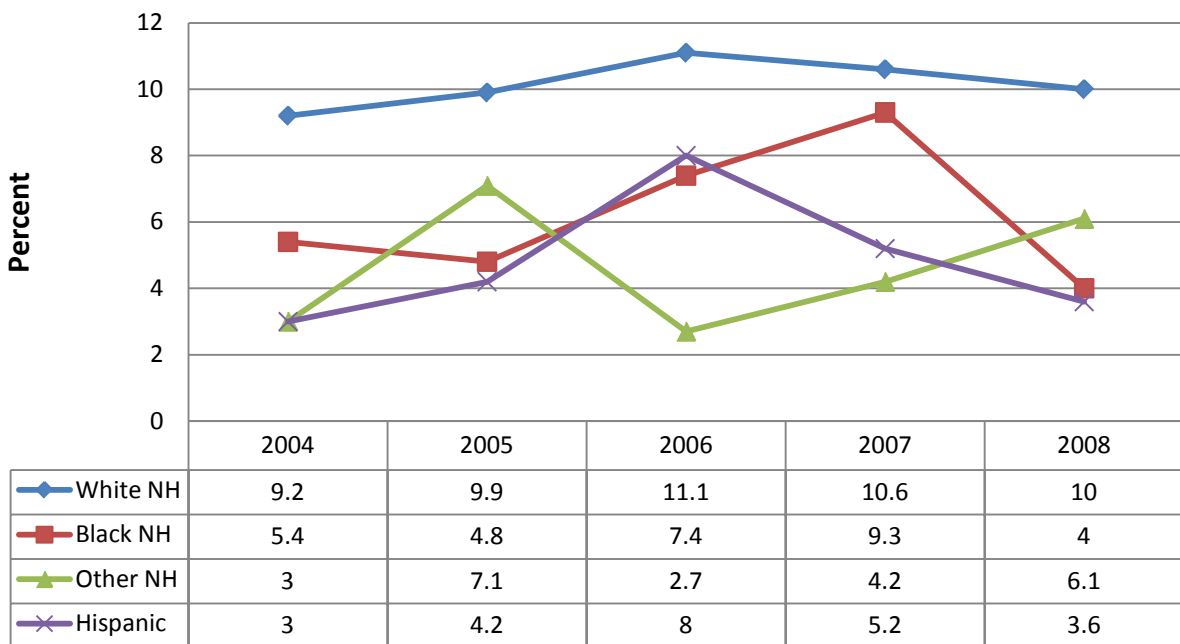


Source: New York State Pregnancy Risk Assessment Monitoring System (PRAMS)

Percent of Moms Who drank During Last 3 Months of Pregnancy by Region, New York State Residents, 2004-2008

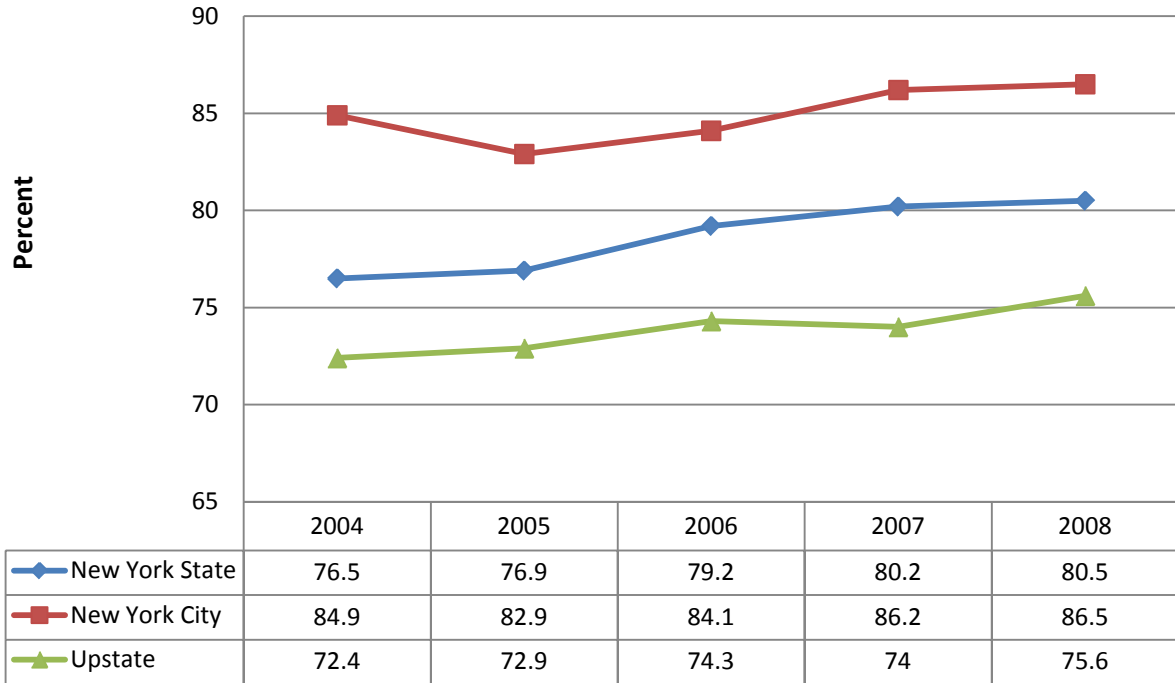


Percent of Moms Who Drank During Last 3 Months of Pregnancy by Race/Ethnicity, New York State Residents, 2004-2008

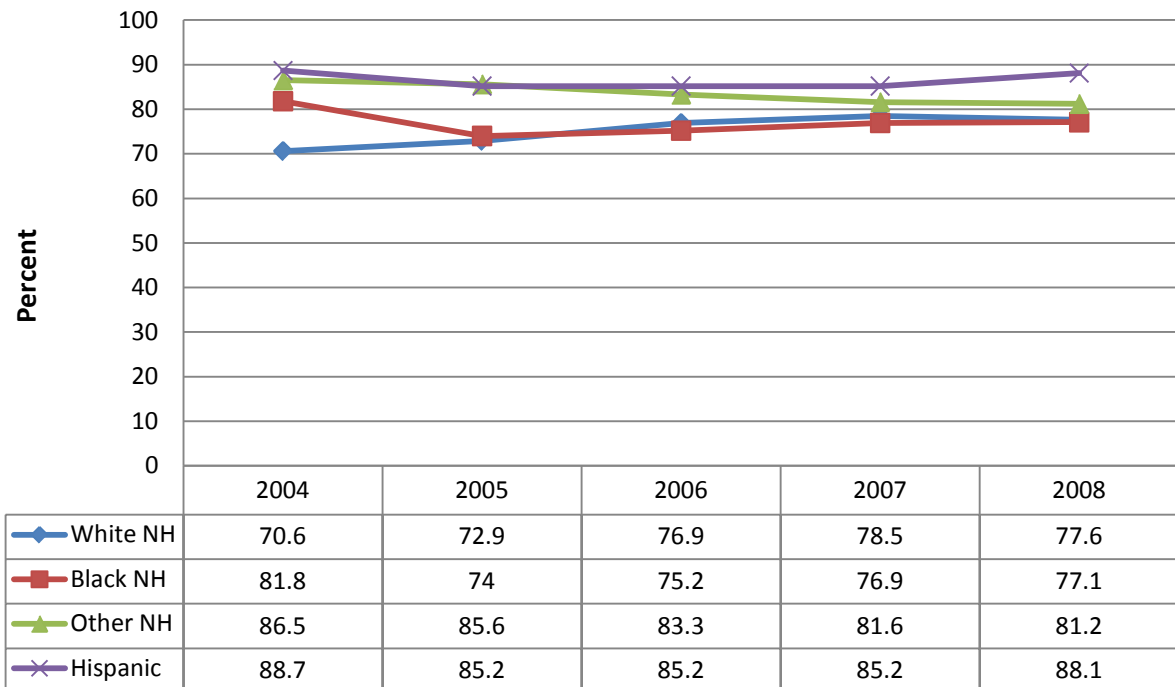


Source: New York State Pregnancy Risk Assessment Monitoring System (PRAMS)

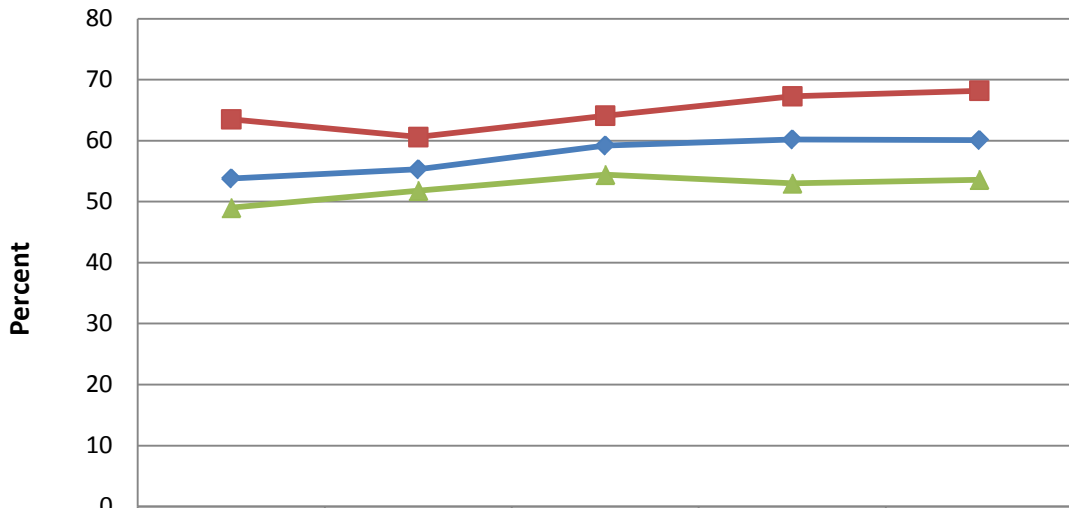
**Percent of Moms Who Initiated Breastfeeding by Region
New York State Residents, 2004-2008**



**Percent of Moms Who Initiated Breastfeeding by Race/Ethnicity,
New York State Residents, 2004-2008**

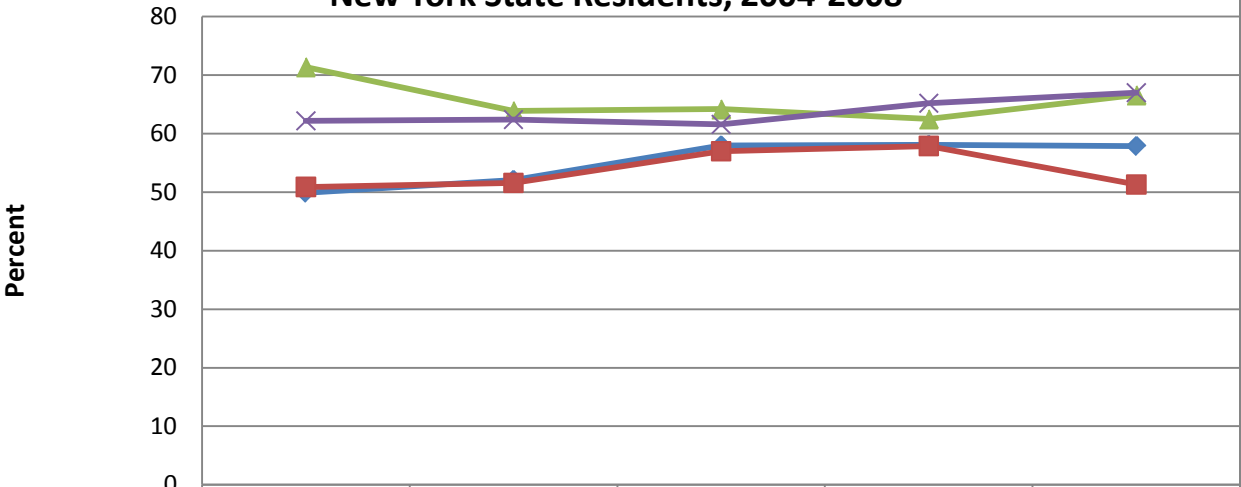


**Percent of Moms Breastfeeding at 8 weeks by Region
New York State Residents, 2004-2008**



| | 2004 | 2005 | 2006 | 2007 | 2008 |
|------------------|------|------|------|------|------|
| ◆ New York State | 53.8 | 55.3 | 59.2 | 60.2 | 60.1 |
| ■ New York City | 63.5 | 60.6 | 64.1 | 67.3 | 68.2 |
| ▲ Upstate | 49 | 51.8 | 54.4 | 53 | 53.6 |

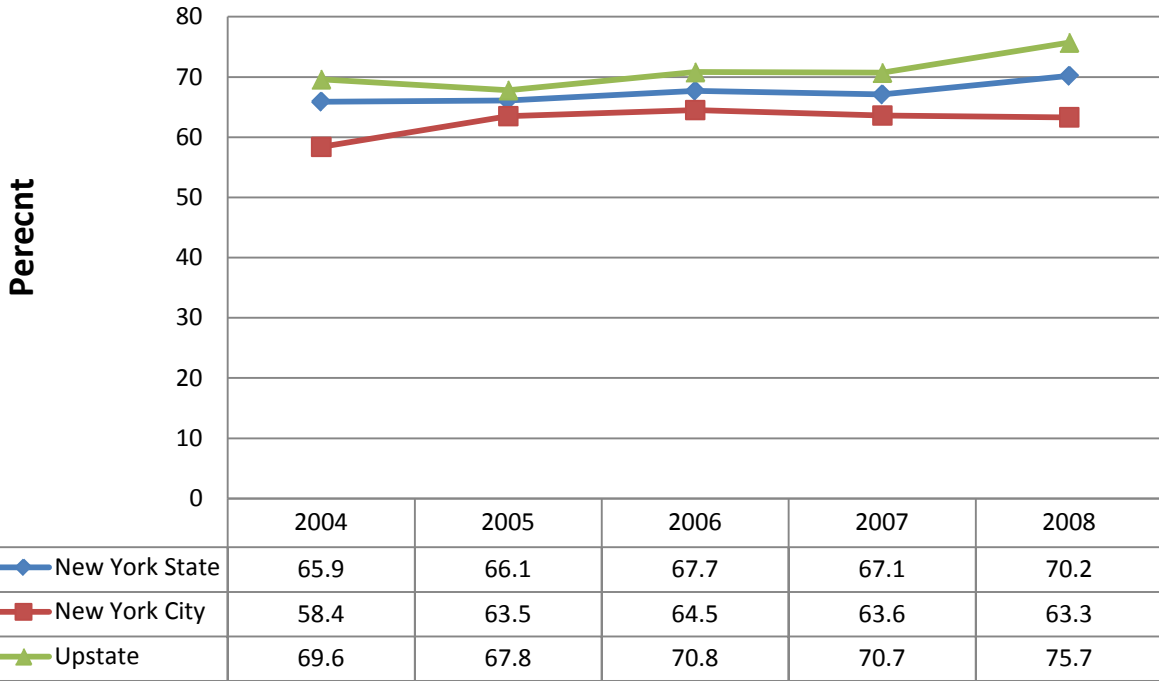
**Percent of Moms Breastfeeding at 8 weeks by Race/Ethnicity
New York State Residents, 2004-2008**



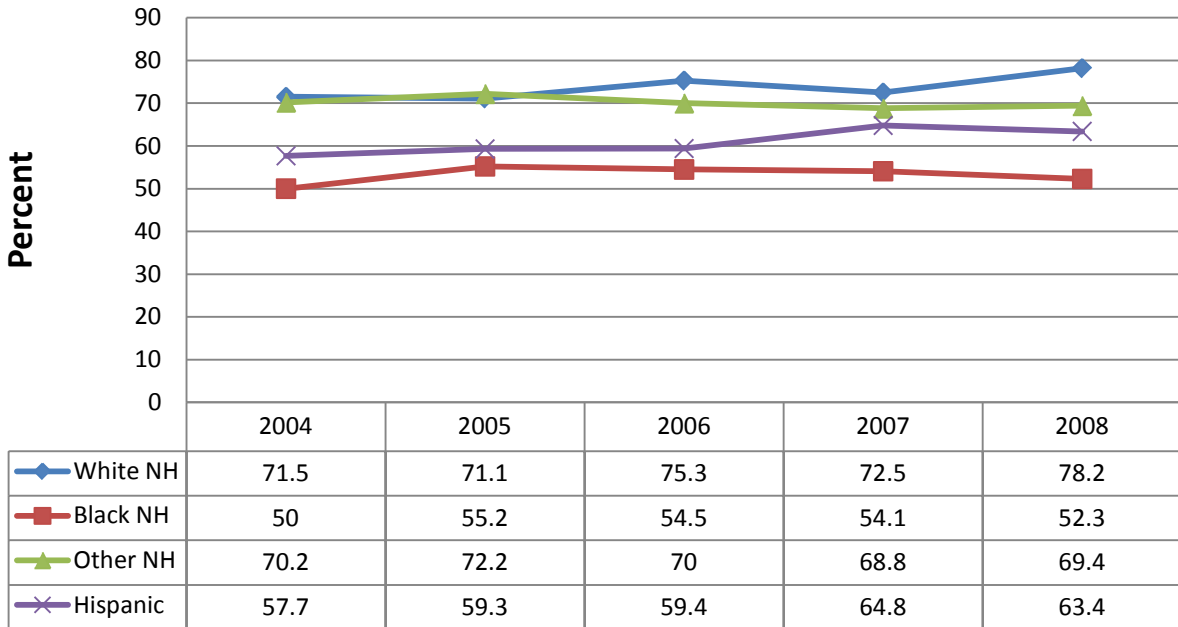
| | 2004 | 2005 | 2006 | 2007 | 2008 |
|------------|------|------|------|------|------|
| ◆ White NH | 49.9 | 52.1 | 58 | 58.1 | 57.9 |
| ■ Black NH | 50.9 | 51.6 | 57 | 57.9 | 51.3 |
| ▲ Other NH | 71.4 | 63.9 | 64.2 | 62.5 | 66.6 |
| × Hispanic | 62.2 | 62.4 | 61.6 | 65.2 | 67 |

Source: New York State Pregnancy Risk Assessment Monitoring System (PRAMS)

Percent of Moms Who Put Babies to Sleep on Their Backs by Region, New York State Residents, 2004-2008



Percent of Moms Who Put Babies to Sleep on Their Backs by Race/Ethnicity, New York State Residents, 2004-2008



Source: New York State Pregnancy Risk Assessment Monitoring System (PRAMS)